



# COLLABORATIVE COMMUNICATIONS

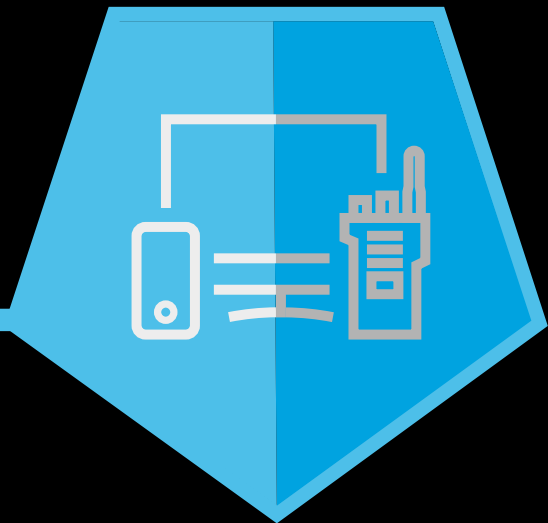
UNIFIED DATA  
PLATFORM

Connect Teams and Increase Focus



# COORDINATE A MORE INFORMED RESPONSE

Clear communication is critical - whether it's a major incident, or simply coordinating between teams and departments. It can also be surprisingly complicated when your team is spread across multiple networks, coverage areas and device types. This can result in teams responding to situations without all the information they need. This is not just inefficient - it's also an unnecessary risk.

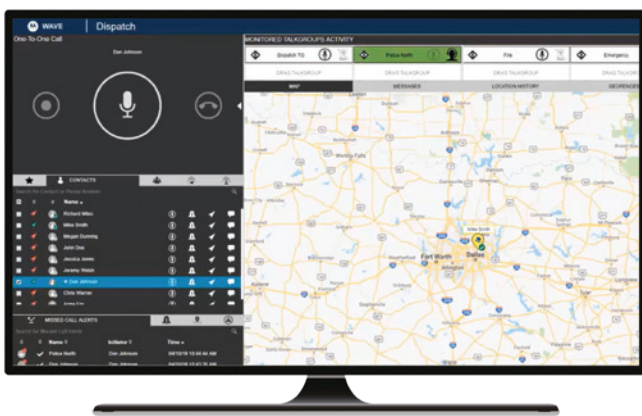


**Dynamically route communications over the best network to apps on the most suitable device.**

## COLLABORATIVE COMMUNICATIONS

There is a better way. Dynamically route communications over the best network to apps on the most suitable device. Video, data, messages, voice and PTT are mapped to existing workgroups and workflows, which preserves the integrity of teams and operations. This enables personnel to collaborate in new ways and fully focus on the task at hand — confident that they have the information to be safe and effective with **collaborative communications**.

# INCREASE SAFETY BY CONNECTING TEAMS



You need constant and easy communication regardless of device or network, without disrupting your existing workflows. Accelerate response with unified communication, unbounded by coverage area, network or device type and aligned to your existing workgroups. You can be sure your communications are secure, complete, and connected, keeping everyone informed and as safe as possible.



**UNIFIED**

## CONNECTED TEAMS

When communication slows, it puts your operation at risk. Map communications over your existing workgroups so you can connect your teams, no matter their role, location, device or network.



**ACTIONABLE**

## INFORMED DECISION-MAKING

You shouldn't have to juggle devices and apps to be part of the conversation. Quickly make decisions, mobilize teams and improve safety by sharing the right information with the right people at the right time.



**SECURE**

## TRUSTED COMMUNICATIONS

Don't expose your team's communications to prying eyes and ears. From asset management tools to private channels and encryption, trust that your communications are protected.

# UNIFIED DATA PLATFORM

AUTOMATED  
EVENT FLOW

INTEGRATED  
WORKFLOW

COMMON USER  
EXPERIENCE

COLLABORATIVE  
COMMUNICATIONS

## DELIVER THE INFORMATION THAT MAKES A DIFFERENCE



You've worked hard to make sure all of your people have the equipment they need to do their job most effectively. Your teams shouldn't have to carry more equipment than necessary to be part of the conversation. Unify your team with secure, trusted communications to get the right information to the right people at the moment they need it most.

Collaborative communications is just one of the benefits brought to you by the Motorola Solutions Unified Data Platform. We build technology on a common Platform to unify your data and workflows on a secure foundation so you can collaborate more easily and make more informed decisions.

For more information about The Unified Data Platform, please visit:  
[www.motorolasolutions.com/platform](http://www.motorolasolutions.com/platform)



Motorola Solutions, Inc. 500 West Monroe Street, Chicago, IL 60661 U.S.A. 800-367-2346 [motorolasolutions.com](http://motorolasolutions.com)

MOTOROLA, MOTO, MOTOROLA SOLUTIONS and the Stylized M Logo are trademarks or registered trademarks of Motorola Trademark Holdings, LLC and are used under license. All other trademarks are the property of their respective owners. © 2021 Motorola Solutions, Inc. All rights reserved. 08-2021