



APX NEXT XE ACCESSORIES



APX NEXT XE

FOCUSED IN THE **EXTREME**



APX NEXT XE ALL-BAND P25 SMART RADIO

A MISSION-CRITICAL VOICE & DATA. ROOTED IN SAFETY.

Your radio is your lifeline. APX NEXT® XE is our next step in advancing it. Designed for ruggedness in extreme environments and with our best audio ever. Exaggerated controls now paired with a tough touchscreen that works with or without gloves, in the hottest, wettest, grittiest conditions. SmartConnect keeps you connected even beyond your radio system. The result is a radio that works when you need it, without pause, distraction or doubt.

EFFORTLESS IS ALWAYS IN REACH

APX NEXT XE is designed for effortless usability when everything is on the line. Oversized, intuitive knobs and buttons are easily distinguished by touch. A mission-critical touchscreen makes it fast and easy to operate your radio. ViQi understands a huge range of natural language voice commands, so you can operate the radio with eyes-up awareness. Every interaction is simple, fast and logical. You stay focused on what matters—your call, your crew and your safety.

BRING NEW INTELLIGENCE TO THE POINT OF ENGAGEMENT

APX NEXT XE application services bring new intelligence to the field - right into your hands. Additions such as. ViQi, SmartMessaging, SmartMapping, and SmartLocate rapidly give firefighters vital information, from pin point location details to important multimedia to improve situational awareness. And as part of our unique, end-to-end public safety ecosystem, APX NEXT XE data and operations are secure, and new capabilities can be seamlessly added as your needs evolve.

PROVISION & UPDATE YOUR FLEET IN MINUTES, NOT MONTHS

APX NEXT XE gives you back time: a cloud-based provisioning system allows you to prepare radios before they arrive. Remote updating keeps radios in the field, with zero touch and zero downtime. MyView Portal provides direct access to subscriptions, warranties and licenses, and a range of services helps you manage your operation. With APX NEXT XE, your ownership experience is streamlined, so your firefighters stay focused and ready.

ANTENNAS

DESIGNED FOR
WEARABILITY



TABLE OF CONTENTS

EXPAND AND CUSTOMIZE YOUR RADIO'S
FUNCTIONALITY WITH BEST-IN-CLASS ACCESSORIES.



ANTENNAS

Stubby	5
--------	-------------------

All-band	5
----------	-------------------

AUDIO

Remote Speaker Microphones	7
----------------------------	-------------------

Surveillance Kits	10
-------------------	--------------------

CARRY

Classic Holster	13
-----------------	--------------------

Boston Leather Carry Case	13
---------------------------	--------------------

Carry Attachments	13
-------------------	--------------------

ENERGY

IMPRES 2 Batteries	15
--------------------	--------------------

IMPRES 2 Chargers	16
-------------------	--------------------

ANTENNAS

DESIGNED FOR WEARABILITY

DETAILS

Motorola Solutions' redesigned antennas provide convenience without compromising performance. Shorter and more flexible, these antennas conform to the users' mission critical environments.

- The 7/800MHz and UHF Stubby Antennas deliver great coverage but in a compact form factor that won't snag on clothing or equipment.
- The Whip, Single and All-band Antennas are fabricated using a new polymer that delivers 40% better flexibility.

SPECIFICATIONS

	Stubby			Single Band		All-band
Part Number	AN000296A01	AN000369B01	AN000369B02	AN000392A01	AN000393A01	AN000297A01
Frequency Range	760-870 MHz	380-470 MHz	450-527 MHz	762-870 MHz	350-520 MHz	136-174MHz, 380-520MHz, 760-870MHz
Length	2.6 in (65 mm)	3.5 in (90 mm)	3.5 in (90 mm)	6.3 in (160 mm)	5.5 in (140 mm)	7.9 in (200 mm)
Integrated GPS	No	No	No	No	No	No

ANTENNA ID BANDS

Colored antenna ID bands are available for easy customization and come in packs of 10.

-  32012144001 Gray
-  32012144002 Yellow
-  32012144003 Green
-  32012144004 Blue
-  32012144005 Purple

Will the new antennas in APX NEXT (stubby single-band and flexible all-band) work with other APX family radios such as the APX 8000 and APX 6000?

No. The current APX antennas have an embedded GPS antenna. The APX NEXT antennas do not have an internal GPS element because the hardware is located inside the radio itself. This means that APX NEXT antennas cannot be used with other models of APX radios.



Stubby

Single band

All-band

AUDIO

HEAR AND BE HEARD
LIKE NEVER BEFORE



XVE500 RSM

HEAR AND BE HEARD LIKE NEVER BEFORE

DETAILS

Newest to the Xtreme Voice Remote Speaker Microphone lineup, the XVE500 is the next generation mission-critical RSM designed for optimal use with APX NEXT™ XE. Equipped with four high dynamic range mics, automatic audio leveling and noise reduction, and built in ViQi button, the XVE500 RSM delivers the clearest and loudest audio communications with easy access to radio controls and critical information. Whether you are in the heat of a fire or exposed to extreme weather conditions, the XVE500 will keep you connected to your team. This RSM was designed to withstand heat exposure of 500°F (260°C) for up to 5 minutes.

KEY FEATURES

- Heat resistant housing and cable
- Loudest, clearest speaker
- Four High Dynamic Range (HDR) microphones
- Dedicated ViQi button
- Enhanced windporting
- New adaptive noise suppression



EASY ACCESS TO RADIO CONTROLS

State of Emergency

Activate or deactivate emergency mode from your XVE500 RSM.

Full Scale Volume Control

Push the Up/Down lever in the (+) increment or (-) increment position and your APX NEXT XE radio volume will increase/decrease with each push.

Radio Function Buttons

Configure the one-dot and three-dot buttons to access key radio functionality from your XVE500 RSM.

EASY ACCESS TO ViQi

ViQi IS YOUR VIRTUAL ASSISTANT, DESIGNED FOR PUBLIC SAFETY. THE THREE-DOT DEDICATED ViQi BUTTON ON YOUR XVE500 RSM ALLOWS YOU TO OPERATE ViQi FROM YOUR SHOULDER.

It's ViQi's job to quickly provide the information you need to stay safe and effective. Use voice commands to run database queries for quick access to information and keep eyes up intelligence.

She understands natural language voice commands, from changing zone, channel and volume, to getting status checks. All while keeping your hands free and your focus on your surroundings.

Click [here](#) to learn more about ViQi.



SPECIFICATIONS

GENERAL

Part Number	PMMN4132, High Impact Green PMMN4132_BLK, Black PMMN4137: High impact green, no knob PMMN4137_BLK: Black, no knob
Compatible Radios*	APX NEXT, APX NEXT XE, APX8000, APX8000XE
Dimensions (RSM Head only)	3.86 x 2.96 x 1.3 in (98 x 75 x 34 mm)
Weight (Full Kit)	12.34 oz. (350 g) knob 11.92 oz. (338 g) no knob
Color	Available in High Impact Green and Black
Power Source	Radio
Clip	360° Rotating Clip with D-Ring
Replacement Clip	PMLN7633
Replacement Knob	PMLN7653

MICROPHONE

Type	Quad Beam
Sensitivity	-42dBV Typical
Distortion (THD)	< 5%, Wideband
IMPRES™	Yes
Noise Cancellation	4 Microphone Adaptive Noise Suppression Algorithm
Windporting	Yes

SPEAKER

Diameter	1.5 in (47 mm)
Typical Output Level at Max Radio Volume	105 Phon
Speech Clarity	Enhanced Clarity
Distortion (THD)	< 15%

* For minimum firmware requirements, see XVE500 RSM [data sheet](#)

CONTROLS

Top	Emergency (Orange), Channel Knob (16 positions)
Side	PTT, 1 Programmable (1-dot)
Front	1 Programmable (3-dot ViQi)
Volume	Up/Down (10 steps)
Strobe	1 Strobe Light Control (front facing)

COILED CABLE

Length	7 in (178 mm) Coiled Length
Flex Life	100k Cycles Minimum
Pull Strength	40 lbs (18.14 kg) Minimum
Cable Jacket	Robust Polycarbonate, Black
Replacement Cable	30009402007

ENVIRONMENTAL

Operating Temperature	-40°C to +85°C (-40°F to +185°F)
Storage Temperature	-55°C to +85°C (-67°F to +185°F)
Mil Specs	MIL810H Method 506.5 (Rain), MIL810H Method 509.5 Procedure 1 (Salt Fog), MIL810H Method 510.5 Procedure 1 (Dust), MIL810H Method 514.6 Procedure 1 Category 24 (Vibration), MIL810H Method 516.6 Procedure 1 (Shock)
ESD	IEC / EN 61000-4-2
IP Rating	IP68 (2 meters, 4 hours)
Impact Grill	1.25 in (31.75 mm) Diameter Steel Ball Drop
Work-When-Wet	Yes

HAZARDOUS CERTIFICATION

Div 2, Class II (Group E, F and G). The XVE500 RSM is UL certified Motorola radios, please see your radio's UL manual for more information.



Can you use Voice Control or Virtual Partner from an accessory with the APX NEXT XE radio?

The XVE500 RSM is the only rugged accessory with which Voice Control and Virtual Partner are accessible in an extreme environment.

What are the differences between the new XVE500 RSM and the previous APX XE500 RSMs?

The XVE500 RSM includes the following:

- A larger, more clear speaker
- Four high dynamic range microphones
- Enhanced windporting design
- Better ergonomics
- New adaptive noise suppression
- Dedicated ViQi button

AUDIO

HEAR AND BE HEARD LIKE NEVER BEFORE

SURVEILLANCE KITS



IMPRES™
Two-Wire Surveillance Kit, Beige

PMLN6130



IMPRES Over-the-Ear
Two-Wire Surveillance Kit, Black

PMLN6127



Two-Wire Surveillance Kit
With Translucent Tube, Black

RLN5312 (Requires BDN6783)



APX™ 3.5mm Threaded Audio
Accessory Adapter

BDN6783

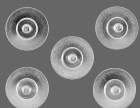


IMPRES
Two-Wire Surveillance Kit, Black

PMLN6129

Fire Market Solution

The XVE500 RSM clip paired with a clip button allows easy and secure access to your RSM when used with a Boston Radio Strap with Button Back Holder.



Clip Button

NNTN8749



Boston Leather Strap

AY000229A01



Boston Leather Strap XL

AY000223A01

Will APX accessories work with APX NEXT XE?

APX NEXT XE has the same audio accessory port as other APX radios. Some APX accessories, including surveillance kits, are certified and others are not. Batteries and single-unit chargers will be different. APX NEXT XE utilizes Bluetooth® 5.0 and the NFC Bluetooth standard. Therefore, MPP Bluetooth accessories will not be compatible. Please check with your technical sales representative for more details.



CARRY

SECURE, EASY ACCESS



CLASSIC HOLSTER

SECURE, EASY ACCESS

DETAILS

We've designed APX NEXT XE carrying accessories to ensure your radio remains easily retrievable for quick use, but secure and in place for whatever your call entails. Notably, both the classic holster and Boston Leather carry case are equipped with a D-ring and which allows the user to attach the radio to a radio strap or belt right out of the box. The holster design also allows for drop-in charging, battery swap of any size, and insertion of the radio while attached to the RSM. Attach the rugged belt clip, equipped with spring-action so you can securely hold your radio while being worn on your waist.

KEY FEATURES

- Designed with a durable plastic for use in extreme environments
- Improved device retention compared to APX carry holsters
- Built-in audio ports enable you to leave your radio in the case for audio applications without degrading device transmit and receive performance
- Integrated, secured D-ring allows you to attach your radio to a radio carry strap and anti sway strap
- Accommodates connection of the XVE500 RSM
- Designed to enable device charging in the IMPRES 2 Multi-Unit Charger while secured using the 2.5" or 3.0" belt clip attachment
- Ships in box with APX NEXT XE with the option to replace with the Boston Leather Carry Case

PART NUMBER SPECIFICATIONS

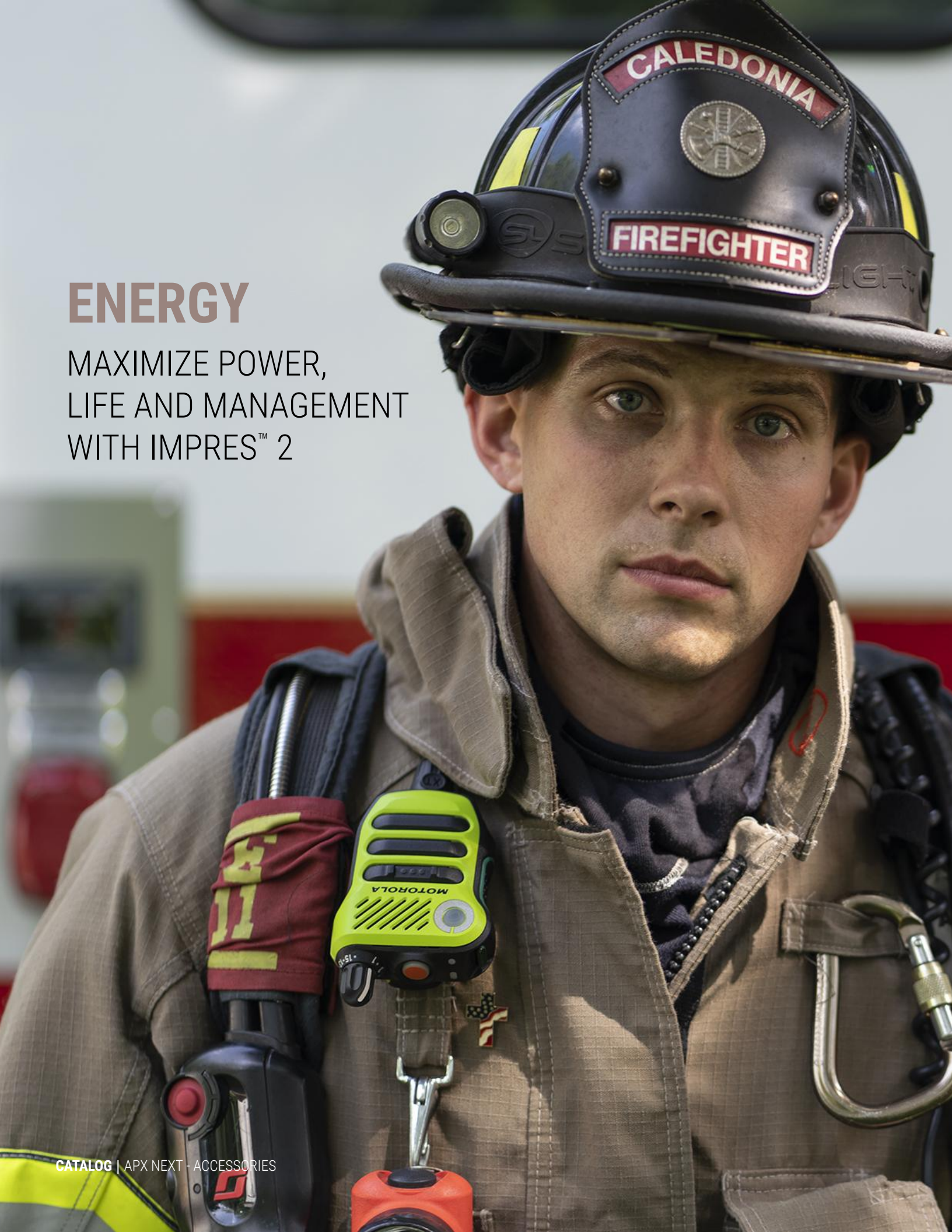
	Part Number	Use with Batteries	Attachments (sold separately)
Classic Holster	PMLN8208	NNTN9217 NNTN9090	Belt Clip 2.5" - NTN8266 3" - PMLN7965
Boston Leather Carry Case	PMLN8209	NNTN9217	
Boston Leather Fireman's Radio Strap	RLN6486		
Boston Leather Fireman's Radio Strap XL	RLN6487		
Boston Leather Fireman's Radio Strap with Button Back Holder	AY000223A01		
Boston Leather Fireman's Radio Strap with Button Back Holder	AY000229A01		
Boston Leather Anti Sway Radio Strap	RLN6488		



APX NEXT XE CLASSIC HOLSTER
(Radio sold separately)



APX NEXT XE CLASSIC HOLSTER - BACK VIEW
(3" belt clip attached)



ENERGY

MAXIMIZE POWER,
LIFE AND MANAGEMENT
WITH IMPRES™ 2

IMPRES 2 BATTERIES

LONG LASTING LIFELINE

SPECIFICATIONS

	Standard HazLoc ³	High Capacity HazLoc ³
Part Number	NNTN9217	NNTN9090
Capacity	4400 mAh UL Div 2	5650 mAh UL Div 2
Operating Temperature	-20°C to +60°C (-4°F to +140°F)	-30C to +60°C (-22 °F to +140 °F)
IP Rating	IP68 ⁴ APX NEXT System Rating	IP68 ⁴ APX NEXT System Rating
APX NEXT Operating Time	14 hrs ⁵	18 hrs ⁵
Availability	In-Box Order Option or Aftermarket	In-Box Order Option or Aftermarket

KEY FEATURES

- Built with highest energy density cells yet
- Backed by a 24-Month Capacity Warranty²
- 48 month workmanship warranty

For IMPRES 2 battery care tips, please visit
<http://motorolasolutions.com/batterycare>



STANDARD CAPACITY

HIGH CAPACITY

1. APX NEXT battery maintenance require IMPRES 2 charger solutions.
2. 24 month capacity warranty applicable only when battery is maintained with IMPRES 2 chargers
3. HazLoc: listed by UL to non-incendive standards: UL 121201 and CAN/CSA C22.2 No. 213-17 as safe for use in Class I, Division 2, Groups A,B,C,D; Class II, Division 2, Groups FG; Class III Hazardous (Classified) Locations.
4. IP68: APX NEXT radio with battery attached submerged in 2 meters of water for 4 hours
5. APX NEXT operation life based on land mobile radio 5/5/90 use profile, touchscreen: on 1hr, SmartConnect: 30 mins, LTE: DRX Idle, GPS: Off, Bluetooth: Off, WiFi 80/20, NFC: Off, RSM connected

IMPRES 2 CHARGERS

MAXIMIZE POWER, LIFE AND MANAGEMENT

APX NEXT XE requires IMPRES 2 charger technology available in single unit (SUC) and multi unit (MUC) charger configurations. Owners of an APX IMPRES 2 multi unit charger (NNTN8844) may convert one or more APX pockets with the field installable APX NEXT pocket.

IMPRES 2 MULTI-UNIT CHARGER

Charge up to six APX NEXT XE batteries simultaneously for more efficiency.

- IMPRES 2 charging algorithms increase charge cycles up to 60% over non-IMPRES
- Six pocket displays to view enhanced diagnostics¹
- Disable calibration mode² or enable long term storage mode³
- Optional wall mount kit NLN7967 available
- California Energy Commission (CEC) energy efficiency compliant

IMPRES 2 SINGLE-UNIT CHARGER

Charge your battery by itself or while it's attached to the radio.

- Advanced IMPRES 2 charging algorithms
- Ability to disable calibration mode via mode selection switch
- California Energy Commission (CEC) energy efficiency compliant

APX NEXT POCKET for APX MULTI-UNIT CHARGER

- End user field upgradeable
- Create APX NEXT/APX mixed device multi-unit charger

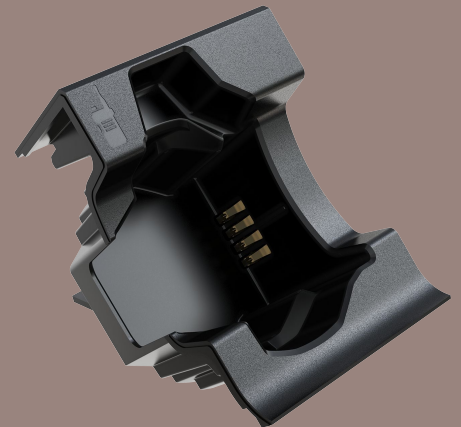
SPECIFICATIONS

Product	Part Number	Dimensions	USB Charging Ports
IMPRES 2 Multi-Unit Charger	NNTN9115	7.8 x 17.5 x 10.3 in (197 x 445 x 262 mm)	6
IMPRES 2 Single-Unit Charger	NNTN9199	2.8 x 3.9 x 4.8 in (70 x 100 x 123 mm)	2
APX NEXT Pocket for (Only for use with NNTN8844)	NNTN9212	N/A	N/A

1. IMPRES 2 MUC display diagnostics: battery day 1 available capacity, current available capacity, rated capacity, part number, serial number, use cycles
2. Motorola recommends a calibration procedure be performed on an IMPRES 2 battery every 28 days to maintain best APX NEXT device fuel gauge accuracy
3. Long term storage mode keeps a battery in a selectable 50% or 70% state of charge.



IMPRES 2 MULTI-UNIT CHARGER



APX NEXT POCKET FOR
IMPRES 2 MULTI-UNIT CHARGER



IMPRES 2 SINGLE-UNIT CHARGER



For more information, please visit
motorolasolutions.com/apxnextxe




APX
NEXT XE
FOCUSED IN THE **EXTREME**