

# USE CASE ELEVATED TEMPERATURE DETECTION

## Safe Stadiums

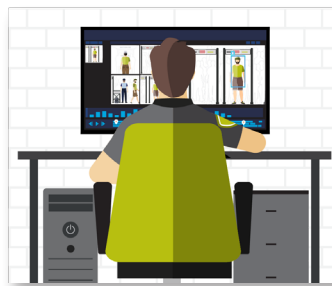
### Operational View



#### DETECT

##### ELEVATED TEMPERATURE DETECTED

A thermal camera at a security checkpoint detects a fan with an indication of elevated body temperature and automatically alerts the security operations center.



#### ANALYZE

##### TEMPERATURE ALERT VERIFIED

The security operations center acknowledges the alert and identifies the visitor with an indication of elevated body temperature.



#### COMMUNICATE

##### RESOURCES DISPATCHED

Agents at the entrance point are notified of the individual and a medical professional is dispatched to the checkpoint.



#### RESPOND

##### SITUATION RESOLVED

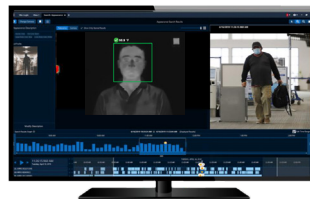
The fan is discreetly isolated and a medical screening is conducted and an incident report is logged with pre-populated fields and relevant data.

### Technology View



#### DETECT

- Avigilon Video Security Cameras
- Avigilon Control Center
- Elevated Temperature Detection
- Radio Alert



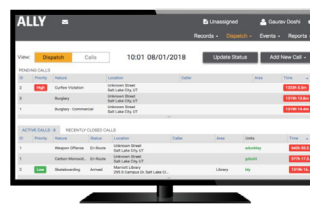
#### ANALYZE

- Avigilon Video Security Cameras
- Avigilon Control Center



#### COMMUNICATE

- Radio Communications: Voice & Multimedia
- WAVE PTX: Multimedia Sharing & Broadband Push-to-Talk
- Dispatch Software



#### RESPOND

- Ally Incident Management



\*Camera footage is for illustrative purposes only

Motorola Solutions, Inc. 500 West Monroe Street, Chicago, IL 60661 U.S.A. [motorolasolutions.com](https://www.motorolasolutions.com)

MOTOROLA, MOTO, MOTOROLA SOLUTIONS and the Stylized M Logo are trademarks or registered trademarks of Motorola Trademark Holdings, LLC and are used under license. All other trademarks are the property of their respective owners. © 2021 Motorola Solutions, Inc. All rights reserved. 01-2021