

USE CASE UNWANTED INDIVIDUAL ON PROPERTY

Safe Hospitals

Operational View



DETECT

LICENSE PLATE RECOGNIZED

An employee's ex-spouse with a history of violence detected entering hospital grounds using license plate recognition.



ANALYZE

APPEARANCE DETECTED

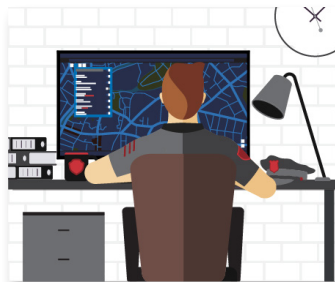
Using a watch list, the intruder is automatically located approaching the hospital and identified as the ex-spouse. Security receives a notification every time the intruder comes into view of a camera to monitor their movements.



COMMUNICATE

NOTIFICATION COMMUNICATED

Nearest security resources dispatched with location and images of the unwelcome individual.



RESPOND

FIRST RESPONSE DISPATCHED AND INCIDENT DOCUMENTED

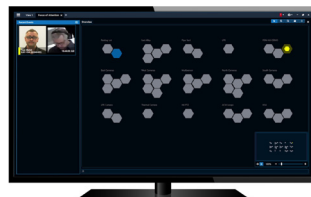
Security teams approach the intruder wearing body-worn cameras and local police directly engaged. Incident logged with pre-populated fields and relevant data.

Technology View



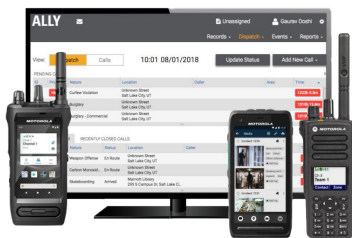
DETECT

- Avigilon Video Security Cameras
- License Plate Recognition
- Watch List
- Avigilon Control Center
- Radio Alert



ANALYZE

- Avigilon Video Security Cameras
- Watch list
- Focus of Attention
- Radio alert



COMMUNICATE

- Radio Communications: Voice & Multimedia
- WAVE PTX: Multimedia Sharing & Broadband Push-to-Talk
- CommandCentral Aware Enterprise
- Dispatch Software



RESPOND

- Ally Incident Management
- Body-Worn Cameras
- Critical Connect



*Camera footage is for illustrative purposes only

Motorola Solutions, Inc. 500 West Monroe Street, Chicago, IL 60661 U.S.A. [motorolasolutions.com](https://www.motorolasolutions.com)

MOTOROLA, MOTO, MOTOROLA SOLUTIONS and the Stylized M Logo are trademarks or registered trademarks of Motorola Trademark Holdings, LLC and are used under license. All other trademarks are the property of their respective owners. © 2021 Motorola Solutions, Inc. All rights reserved. 03-2021