

# USE CASE

# MACHINE MONITORING & ALERTS

Safer Manufacturing

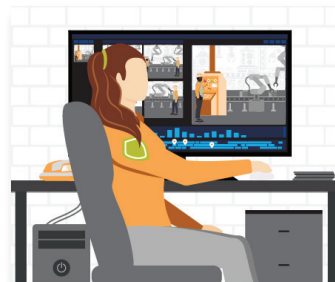
## Operational View



### DETECT

#### MACHINE ALERT ACTIVATED

Machine failure alert on production line automatically triggers an alert to the line supervisor.



### ANALYZE

#### PRODUCTION MONITORED

Operational staff use cameras to monitor the situation and evaluate how the issue is affecting overall production.



### COMMUNICATE

#### NOTIFICATION COMMUNICATED

After initial alert, the line supervisor creates work order ticket for maintenance and communicates directly with the plant manager. An All Call notification is sent to other departments notifying them of a production delay.



### RESPOND

#### ISSUE RESOLVED MINIMAL DOWNTIME

Maintenance replaces a part during the next shift change to prevent breakage. Work order ticket closed.

## Technology View



### DETECT

- Machine Failure Alert Integration
- Radio Communications



### ANALYZE

- Avigilon Video Security Cameras
- Avigilon Unity Video
- Control Room Solutions



### COMMUNICATE

- Radio Communications: Voice & Multimedia
- WAVE PTX™: Broadband Push-to-Talk with Multimedia Sharing
- Dispatch Software
- Work Order Ticket Management



### RESPOND

- Control Room Solutions
- Work Order Ticket Management

\*Camera footage is for illustrative purposes only

Motorola Solutions UK Ltd. Nova South, 160 Victoria Street, London, SW1E 5LB, United Kingdom.

MOTOROLA, MOTO, MOTOROLA SOLUTIONS and the Stylized M Logo are trademarks or registered trademarks of Motorola Trademark Holdings, LLC and are used under license. All other trademarks are the property of their respective owners. © 2024 Motorola Solutions, Inc. All rights reserved. (02-24)