

USE CASE ELEVATED TEMPERATURE DETECTION

Safe Hospitals

Operational View



DETECT

ELEVATED TEMPERATURE DETECTED

A thermal camera at a main hospital entrance detects a visitor with an indication of elevated body temperature and alerts the security operations center.



ANALYZE

TEMPERATURE ALERT VERIFIED

The security operations center acknowledges the alert and identifies the visitor with an indication of elevated body temperature.



COMMUNICATE

RESOURCES DISPATCHED

Agents at the entrance are notified of the individual and a medical professional is dispatched to the checkpoint.



RESPOND

SITUATION RESOLVED

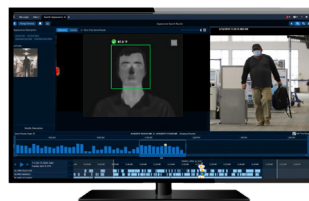
The individual is discreetly isolated and a medical screening is conducted and an incident report is logged with associated data.

Technology View



DETECT

- Avigilon Thermal Cameras
- Avigilon Unity Video
- Elevated Temperature Detection
- Orchestrate



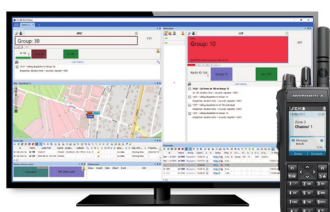
ANALYZE

- Avigilon Thermal Cameras
- Avigilon Unity Video



COMMUNICATE

- Radio Communications: Voice & Multimedia
- WAVE PTX: Multimedia Sharing & Broadband Push-to-Talk
- Dispatch Software



RESPOND

- Control Room Solutions

*Camera footage is for illustrative purposes only

Motorola Solutions UK Ltd. Nova South, 160 Victoria Street, London, SW1E 5LB, United Kingdom.

MOTOROLA, MOTO, MOTOROLA SOLUTIONS and the Stylized M Logo are trademarks or registered trademarks of Motorola Trademark Holdings, LLC and are used under license. All other trademarks are the property of their respective owners. © 2022 Motorola Solutions, Inc. All rights reserved. (11-22)