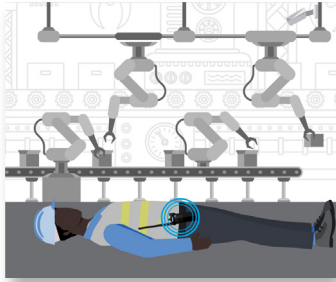


USE CASE WORKER DOWN

Safe Manufacturing

Operational View



DETECT

WORKER DOWN ALERT

Man Down feature on radio detects a fallen worker in remote area of the plant and automatically sends an alert over the radio network to security and operations.



ANALYZE

REAL-TIME VIDEO VERIFICATION

Control room operator receives the emergency alert, verifies the location of the worker and uses live video to evaluate and monitor the circumstances of the incident.



COMMUNICATE

NOTIFICATION COMMUNICATED

Based on defined protocols, the plant emergency response team is dispatched to assist the worker and investigate using real-time location data.

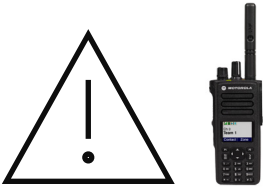


RESPOND

FIRST RESPONSE DISPATCHED

On-site or local first responders arrive to provide medical attention. An incident is logged with relevant data for analysis and claims.

Technology View



DETECT

- Radio Communications: Man Down Alert/Emergency Button



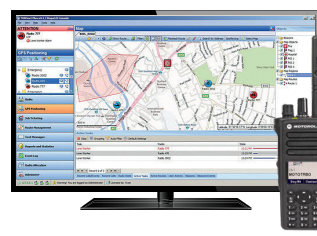
ANALYZE

- Avigilon Video Security Cameras
- Avigilon Control Center
- Identity Search



COMMUNICATE

- Control Room Solutions
- Radio Communications: GPS, Voice & Multimedia
- WAVE PTX: Broadband Push-to-Talk with Multimedia Sharing
- Dispatch Software



RESPOND

- Control Room Solutions
- Critical Connect

Motorola Solutions Ltd. Nova South, 160 Victoria Street, London, SW1E 5LB, United Kingdom.

Availability is subject to individual country law and regulations. All specifications shown are typical unless otherwise stated and are subject to change without notice. Camera footage is for illustrative purposes only.

MOTOROLA, MOTO, MOTOROLA SOLUTIONS and the Stylized M Logo are trademarks or registered trademarks of Motorola Trademark Holdings, LLC and are used under license. All other trademarks are the property of their respective owners. ©2021 Motorola Solutions, Inc. All rights reserved. EMEA (04-21)