

# USE CASE BANNED INDIVIDUAL

## Safer Hospitality

### Operational View



#### DETECT

##### INDIVIDUAL RECOGNISED

The license plate of a known disruptive individual is recognised entering a parking lot. An alert is automatically sent to appropriate security staff directly on their device of choice and in the command center.



#### ANALYZE

##### KNOWN INDIVIDUAL LOCATED

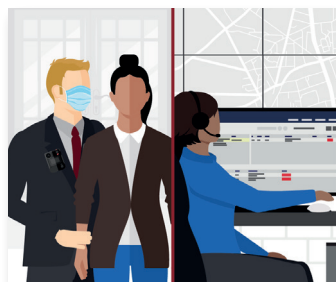
Nearby cameras are populated and security teams monitor the movement of the banned individual. Nearest security resources are located.



#### COMMUNICATE

##### SECURITY TEAMS DISPATCHED

Live video and intelligence is shared with security staff monitoring building entrances to intercept the individual and prevent them from entering the facility. Public Safety is also directly alerted for assistance.

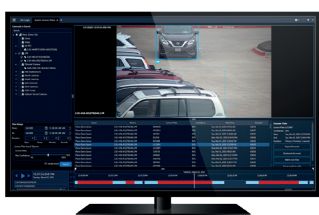


#### RESPOND

##### SITUATION CONTAINED AND REPORTED

The banned individual is prevented from entering the facility and real-time intelligence is shared with public safety prior to their arrival. An incident report is securely logged with relevant information.

### Technology View



#### DETECT

- Avigilon Unity Video
- License Plate Recognition
- Orchestrate



#### ANALYZE

- Fixed Video Security
- Avigilon Unity Video



#### COMMUNICATE

- Radio Communications: Voice & Multimedia
- WAVE PTX™: Multimedia Sharing & Broadband Push-to-Talk
- Dispatch Console



#### RESPOND

- Control Room Solutions
- Critical Connect

\*Camera footage is for illustrative purposes only

Motorola Solutions UK Ltd. Nova South, 160 Victoria Street, London, SW1E 5LB, United Kingdom.

MOTOROLA, MOTO, MOTOROLA SOLUTIONS and the Stylized M Logo are trademarks or registered trademarks of Motorola Trademark Holdings, LLC and are used under license. All other trademarks are the property of their respective owners. © 2024 Motorola Solutions, Inc. All rights reserved. (02-24)