

USE CASE ELEVATED TEMPERATURE DETECTION

Safe Stadiums

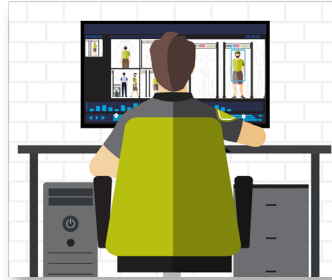
Operational View



DETECT

ELEVATED TEMPERATURE DETECTED

A thermal camera at a security checkpoint detects a fan with an indication of elevated body temperature and automatically alerts the security operations center.



ANALYZE

TEMPERATURE ALERT VERIFIED

The security operations center acknowledges the alert and identifies the visitor with an indication of elevated body temperature.



COMMUNICATE

RESOURCES DISPATCHED

Agents at the entrance point are notified of the individual and a medical professional is dispatched to the checkpoint.



RESPOND

SITUATION RESOLVED

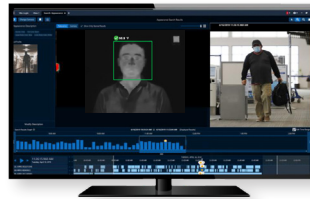
The fan is discreetly isolated and a medical screening is conducted and an incident report is logged with pre-populated fields and relevant data.

Technology View



DETECT

- Avigilon Camera
- Avigilon Control Center
- Elevated Temperature Detection



ANALYZE

- Avigilon Cameras
- Avigilon Control Center



COMMUNICATE

- WAVE PTX/ Broadband Push To Talk
- Radio Communications
- Dispatch



RESPOND

- Ally Incident Management
- SmartPTT PLUS and TRBOnet PLUS

