

USE CASE

MACHINE MONITORING & ALERTS

Safe Manufacturing

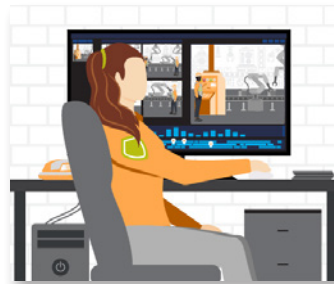
Operational View



DETECT

MACHINE ALERT ACTIVATED

Machine failure alert on production line automatically triggers an alert to the line supervisor.



ANALYZE

PRODUCTION MONITORED

Operational staff use cameras to monitor the situation and evaluate how the issue is affecting overall production.



COMMUNICATE

NOTIFICATION COMMUNICATED

After initial alert, the line supervisor creates work order ticket for maintenance and communicates directly with the plant manager. An All Call notification is sent to other departments notifying them of a production delay.



RESPOND

ISSUE RESOLVED MINIMAL DOWNTIME

Maintenance replaces a part during the next shift change to prevent breakage. Work order ticket closed.

Technology View



DETECT

- Machine Failure Alert Integration
- Radio Communications



ANALYZE

- Avigilon Video Security Cameras
- Avigilon Control Center
- CommandCentral Aware Enterprise



COMMUNICATE

- Radio Communications: Voice & Multimedia
- WAVE PTX: Broadband Push-to-Talk with Multimedia Sharing
- Avtec Dispatch Software
- Work Order Ticket Management



RESPOND

- Work Order Ticket Management



*Camera footage is for illustrative purposes only

Motorola Solutions, Inc. 500 West Monroe Street, Chicago, IL 60661 U.S.A. motorolasolutions.com

MOTOROLA, MOTO, MOTOROLA SOLUTIONS and the Stylized M Logo are trademarks or registered trademarks of Motorola Trademark Holdings, LLC and are used under license. All other trademarks are the property of their respective owners. © 2022 Motorola Solutions, Inc. All rights reserved. 05-2022 [CK05]