

# H4 THERMAL CAMERA

VGA QVGA

## SEE MORE DETAIL IN COMPLETE DARKNESS

The Avigilon H4 Thermal camera is embedded with self-learning video analytics to provide long-range perimeter protection and leverages thermal technology to operate under challenging conditions while minimizing false alarms. It is designed to detect the presence and movement of people and vehicles in areas with poor visibility, including partly camouflaged scenes, low lighting and even absolute darkness, without the need for additional light sources.



### SELF-LEARNING VIDEO ANALYTICS

Detect and classify objects regardless of lighting/darkness or extreme environments such as weather, dust, debris, smoke or foliage



### MULTIPLE LENS OPTIONS

Choose from three athermalized lens variants to optimize on-site coverage requirements



### ONVIF COMPLIANT

Native ONVIF® Profile S compliance allows easy integration with existing ONVIF infrastructures

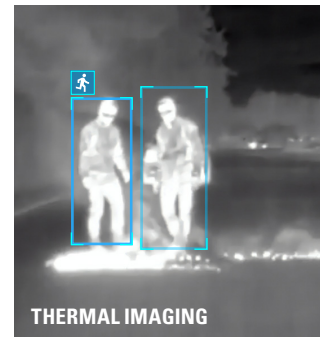


### WEATHER & IMPACT RATED

IP66 weather rating and IK10\* impact rating for vandal resistance



VISIBLE LIGHT



THERMAL IMAGING

For more information visit [avigilon.com/h4-thermal](https://avigilon.com/h4-thermal)



\*For VGA resolution models, IK10 rating only applies to the camera enclosure.

MOTOROLA, MOTO, MOTOROLA SOLUTIONS, and the Stylized M Logo are trademarks or registered trademarks of Motorola Trademark Holdings, LLC and are used under license. AVIGILON, the AVIGILON logo and AVIGILON CONTROL CENTER are trademarks of Avigilon Corporation. All other trademarks are the property of their respective owners. © 2020 Motorola Solutions, Inc. All rights reserved. 09-2020