

DIGITAL EVIDENCE SIMPLIFIED

Si200 AND COMMANDCENTRAL VAULT

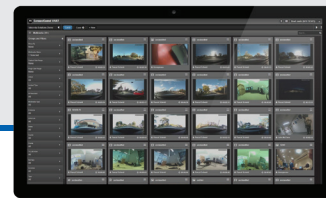
The Si200 body-worn video camera combined with CommandCentral Vault digital evidence management software make securely capturing, storing, analyzing and sharing critical video evidence simplified and seamless. CommandCentral Vault also enables easy storage of other digital evidence, simple case file creation and easy sharing of the evidence with your district attorneys' offices and other law enforcement partners.

EXPERIENCE AN END-TO-END SOLUTION



Si200 BODY-WORN VIDEO CAMERA

- Simple controls for ease of use
- Compact, lightweight and rugged design
- Extended battery life of 12+ hours
- Enhanced connectivity with Bluetooth and WiFi
- Integrated GPS location
- Wide field of view at 148° diagonal, 120° horizontal, 63° vertical
- Extended 64GB memory
- Pre-buffering up to 2 minutes
- Configurable recording resolution 480p/ 720p/1080p
- Integrated smartphone application to review and tag video
- Mounting options to accommodate multiple uniform types



COMMANDCENTRAL VAULT DIGITAL EVIDENCE MANAGEMENT SOFTWARE

- Standards-compliant security
- Source-agnostic cloud storage
- Integrated workflow that supports enhanced search, incident recreation and external file sharing
- Automated, object-based redaction
- Verifiable chain of custody
- Tag-based retention logic
- Tagging of video evidence with CAD and records management data
- Automatic correlation of CAD incident data with video data upon upload

PROTECTED FROM CAPTURE TO COURTROOM

END-TO-END SECURITY

- **Secure Data At Rest** - On device and in the cloud we exceed CJIS policies to ensure agency compliance to data protection standards.
- **Seamless Data Transfer** - Content is securely encrypted in transit to CommandCentral Vault, only over networks you predetermine to be secure
- **Verifiable Chain of Custody** - Chain of custody begins and is verifiable from the moment of capture, whereas most vendors can only track from upload

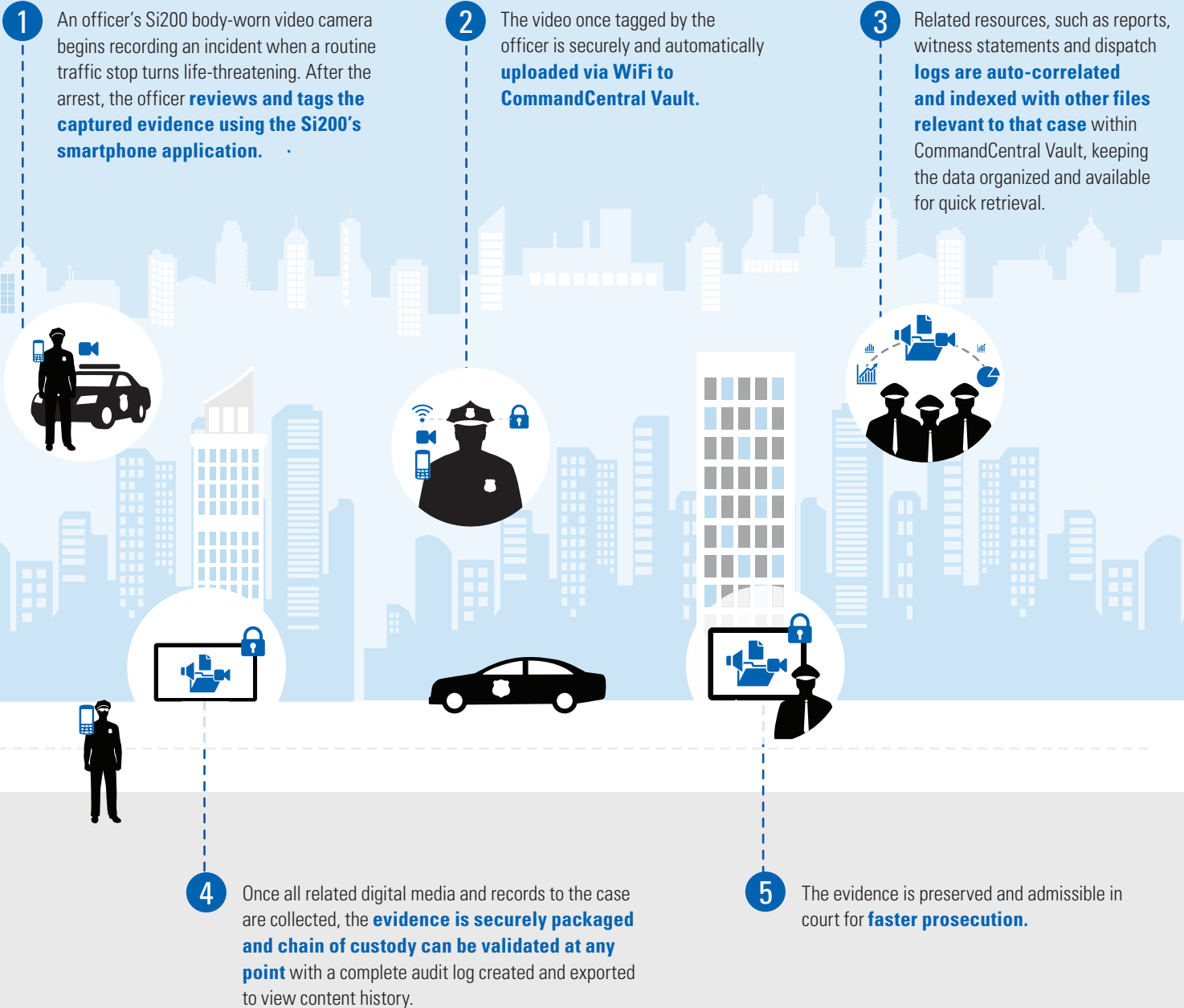
EFFORTLESSLY MAINTAIN CONTENT

- **Google-like Search** - Free-text search, filtering and grouping by metadata or tag
- **Tag-Based Retention Logic** - Preset content retention schedule to minimize manual purging
- **Intelligent Case Folders** - Correlation of all relevant content based on record

ENSURE SUCCESSFUL PROSECUTIONS

- **External File Sharing** - Secure sharing with judicial partners directly through CommandCentral Vault
- **Chain of Custody** - Validated at any point and a complete audit log created and exported to view content history.
- **Object-Based Redaction** - Automated, object-based redaction to protect personally identifiable information in videos

USE CASE: ENSURE DIGITAL EVIDENCE STANDS UP IN COURT WITH A COMPLETE SOLUTION



Motorola Solutions, Inc. 500 West Monroe Street, Chicago, IL 60661 U.S.A. motorolasolutions.com

MOTOROLA, MOTO, MOTOROLA SOLUTIONS and the Stylized M Logo are trademarks or registered trademarks of Motorola Trademark Holdings, LLC and are used under license. All other trademarks are the property of their respective owners. © 2019 Motorola Solutions, Inc. All rights reserved. 01-2019