



ENHANCE SAFETY AND IMPROVE SITUATIONAL AWARENESS

MOTOROLA SOLUTIONS WAVE PTX SAFEGUARD PACKAGE

Motorola Solutions WAVE PTX™ optional SafeGuard Package combines LMR interoperability and a comprehensive set of critical communications features to significantly enhance safety and improve overall situational awareness for field personnel.

The critical communications features included in the SafeGuard Package are:

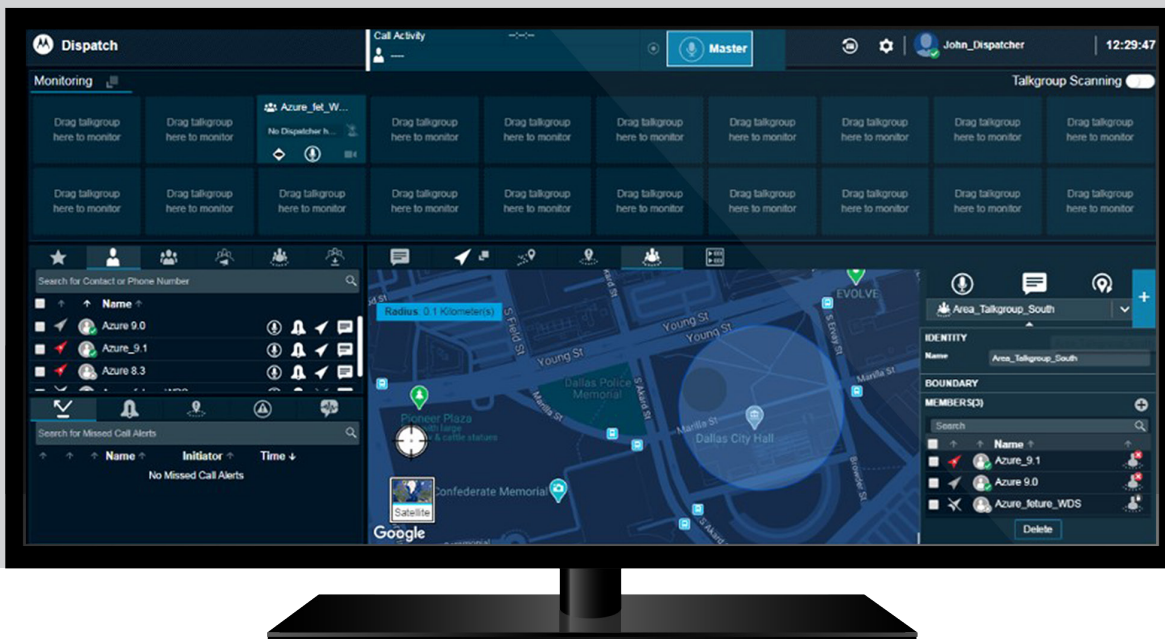
EMERGENCY CALLING AND ALERTING

Emergency calling and alerting allows users to press a hard or soft dedicated button to initiate an emergency call, with the highest priority, to reach the right resource for assistance. Authorized users can also originate emergency calls on behalf of specific users, participating in the call in case of a life-threatening situation.

LARGE TALKGROUPS

Large Talkgroup feature makes it possible to create talkgroups with up to 3,000 users. With Large Talkgroups, you can increase productivity and improve collaboration by getting key information to a wider group of workers than ever before.





DYNAMIC LOCATION-BASED TALKGROUPS

Dynamic, location-based talkgroups allow a dispatcher to set up a temporary talkgroup with membership based on whether a user has entered or left a geofenced area, reducing communication chatter by focusing PTT communication on specific talkgroup members. Dispatchers can also designate certain users to be statically assigned to the talkgroup so their membership is not dependent on their location.

REMOTE USER CHECK

Authorized users can use remote user check to get information on a user's device, including battery level, signal strength and location. From the remote user check window, authorized users can also initiate ambient or discreet listening, disable the PTT application on the device, or commence an emergency declaration for the user.

AMBIENT AND DISCREET LISTENING

Ambient Listening makes it possible for dispatchers and supervisors to remotely open the microphone of a user's device. Ambient Listening is typically used to determine if a user is in distress and needs assistance, but can also be used to listen to conversations between undercover operatives and suspects. Discreet Listening allows dispatchers and supervisors to be added as third-parties in listen-only mode to all PTT communication of a targeted user, making it a useful training tool.

ENABLE/DISABLE

Enable/Disable allows dispatchers and supervisors to remotely disable or enable broadband PTT application for a specific device. Normally used on lost or stolen devices, Enable/Disable prevents unauthorized individuals from accessing the WAVE PTX mobile application.

For more information about WAVE PTX, visit www.motorolasolutions.com/waveptxna



Motorola Solutions Inc., 500 W Monroe St, Chicago, IL 60661. U.S.A. motorolasolutions.com

MOTOROLA, MOTOROLA SOLUTIONS and the Stylized M Logo are trademarks or registered trademarks of Motorola Trademark Holdings, LLC and are used under license. All other trademarks are the property of their respective owners. ©2022 Motorola Solutions, Inc. All rights reserved. Specifications are subject to change without notice 06-2022 [LD05]