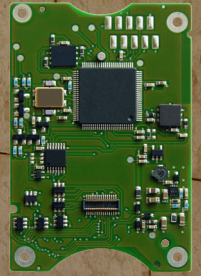


hermes**TRX**

Man Down Option Board



**GPS based Man Down and
Lone Worker System for MOTOTRBO™**

hermes**TRX** Man Down Option Board

GPS based Emergency Lone Worker Supervisory system with hermesTRX

The hermesTRX system has been enhanced with an Emergency Man Down and Lone Worker function to provide GPS based Lone-worker Supervision using Open Street Maps, ArcGIS or Google Earth as its mapping platform. The hermesTRX Man Down Application is designed to be installed into the MOTOROLA range of MOTOTRBO hand portable radios. In the event that an employee becomes injured or falls unconscious a 'man-down' notification is sent immediately to the hermesTRX Dispatch position.

The hermesTRX man down option board works 'silently' in the background enabling the user to utilize his portable radio as normal. Voice calls and data messaging are available just as before, however should the radio be placed at an 'unusual' angle, the radio will emit a pre-warning. Should the pre-alert not be acknowledged or the angle of the radio is not changed, an emergency alert will be sent to the dispatcher. A 'hot mic' facility can be activated as required.

To assist the 'search team' in the rescue, the radio will emit an audible tone for the duration of the emergency call to ensure the downed employee is found as quickly as possible. The search team will use the audible tone as a 'beacon' to assist in the search process.

The man down feature is available in hosted and non-hosted applications. In the hosted mode, the location of the worker is displayed on the digital map as a RED icon. Simultaneously, the worker's icon will change status to RED. An audible tone is played to draw the supervisor's attention to the urgent situation. In addition should the radio be motionless for a pre-determined period of time, an alert will be sent to the hermesTRX Dispatch position warning of a potentially dangerous situation. In the non-hosted version the man-down emergency can be sent to a MOTOTRBO base radio.

The hermes Man Down Option Board is available for both DP3xxx and DP4xxx series MOTOTRBO portable radios.

hermes microcom GmbH & Co. KG • 82061 Munich/Neuried, Germany • Phone +49 (700) microcom or +49 (89) 745547-0 • www.hermestrx.com

© 2013 Specifications subject to change without prior notice. Google™ is a trademark of Google Inc.

MOTOROLA and the Stylized M Logo are registered in the US Patent & Trademark Office | All other product or service names are the property of their respective owners.

