

VIDEOMANAGER: VB SMARTCONTROL

**INSTALLING, CONFIGURING AND USING
THE VB SMARTCONTROL MOBILE APP
FOR THE VB400 BODY-WORN CAMERA**

CONTENTS

WHAT IS VB SMARTCONTROL?	3
DOWNLOAD AND INSTALL VB SMARTCONTROL	3
ADD CUSTOM FIELDS TO VB SMARTCONTROL	4
CREATE A VB SMARTCONTROL DEVICE PROFILE	4
CREATE A VB SMARTCONTROL ROLE FOR USERS	5
ASSOCIATE USERS AND PHONES WITH VB SMARTCONTROL	6
USE VB SMARTCONTROL	6
VIEW DEVICE INFORMATION	7
WATCH AND TAG VIDEOS	7
USE THE LIVE VIEWFINDER	7

WHAT IS VB SMARTCONTROL?

The Motorola Solutions VB SmartControl app, available on both Android and iOS, enables you to securely review and categorize VB400 footage from the moment it's been captured. It also contains other key functionality, such as a summary of remaining recording capacity, so you can make the most of your VB400's evidential footage and battery life.

DOWNLOAD AND INSTALL VB SMARTCONTROL

If you have a licence for VideoManager, you can download VB SmartControl for free from the Apple App Store or Google Play Store. Scan these QR codes to download the app:



Android



iOS

ADD CUSTOM FIELDS TO VB SMARTCONTROL

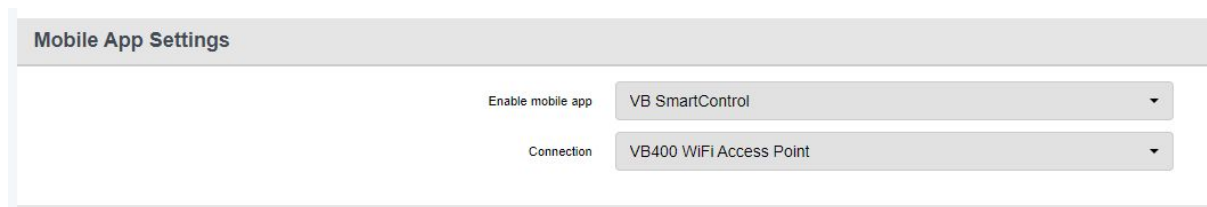
To tag videos in the field, you must add previously-created user-defined media fields to VB SmartControl ahead of time. To do so:

1. Navigate to the **Admin** tab.
2. Select the **Policies** pane.
3. Click the **User-defined Media Fields** section.
4. In the top right-hand corner, click **Mobile App field layout**.
5. Use **+** to add fields to the app.
6. Click **Save changes**.

CREATE A VB SMARTCONTROL DEVICE PROFILE

By default, VB SmartControl is not enabled for VB400s. You must either create a new profile for use with VB SmartControl, or edit an existing profile to enable it. To do so:

1. Navigate to the **Admin** tab.
2. Select the **Devices** pane.
3. Click the **Device Profiles** section.
4. Either click **Create profile** (if you are creating a new profile) or **Go to profile** (if you are editing an existing profile).
5. Scroll down to the **Mobile App Settings** section.
6. From the **Enable mobile app** dropdown, select **VB SmartControl**.



PLEASE NOTE: VB SmartControl and live streaming are not currently compatible. If you wish to live stream video using a VB400, you cannot enable VB SmartControl in the same device profile.

7. Scroll down to the **Controls** section. Optionally select an action which will prompt the VB400 to connect to the VB SmartControl app, using the **Connect device** option. Otherwise, the VB400 will attempt to connect as soon as it is unlocked.
8. Click **Create profile**.
9. Optionally make this device profile the system default by clicking **Reorder profiles** and moving it to the top of the list, then click **Confirm new order**.

CREATE A VB SMARTCONTROL ROLE FOR USERS

By default, VB SmartControl is not enabled for users on VideoManager. You must either create a new role for use with VB SmartControl, or edit an existing role to enable it. To do so:

1. Navigate to the **Admin** tab.
2. Select the **People** pane.
3. Click the **Roles** section.
4. Either click **Create role** (if you are creating a new role) or **Go to role** (if you are editing an existing role).
5. Scroll down to the **Device permissions** section.



Mobile App	
Setup Mobile App for myself	Off
Setup Mobile App for supervised user	Off
Setup Mobile App for any user	Off
Use Mobile App	Off
Use Mobile App view finder	Off
Play video in Mobile App	Off
View/Edit Mobile App metadata	Off
View system page in Mobile App	Off

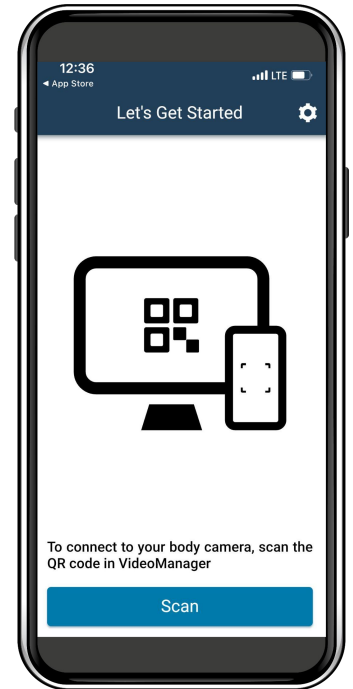
6. VB SmartControl permissions are as follows:
 - **Setup Mobile App for myself** - the user can associate a mobile phone with their user profile on VideoManager.
 - **Setup Mobile App for supervised user** - the user can associate a mobile phone with a user they supervise.
 - **Setup Mobile App for any user** - the user can associate a mobile phone with a user on VideoManager.
 - **Use Mobile App** - the user can use VB SmartControl.
 - **Use Mobile App viewfinder** - the user can use the app's viewfinder to see what their VB400 sees.
 - **Play video in Mobile App** - the user can play back VB400 footage on the app.
 - **View/Edit Mobile App metadata** - the user can edit video custom tags on the app.
 - **View system page in Mobile App** - the user can view information about the VB400 on the app.
7. Optionally add the previously-created VB SmartControl device profile to this role by clicking **+** next to **Default device profiles**. This ensures that if users are assigning themselves cameras with RFID touch assign, they will always be able to use VB SmartControl.
8. Click **Create role** or **Save role**.

Once you have saved the role, you should apply it to the relevant users or groups.

ASSOCIATE USERS AND PHONES WITH VB SMARTCONTROL

You must now associate every user which will be using VB SmartControl with their respective mobile phones. To do so:

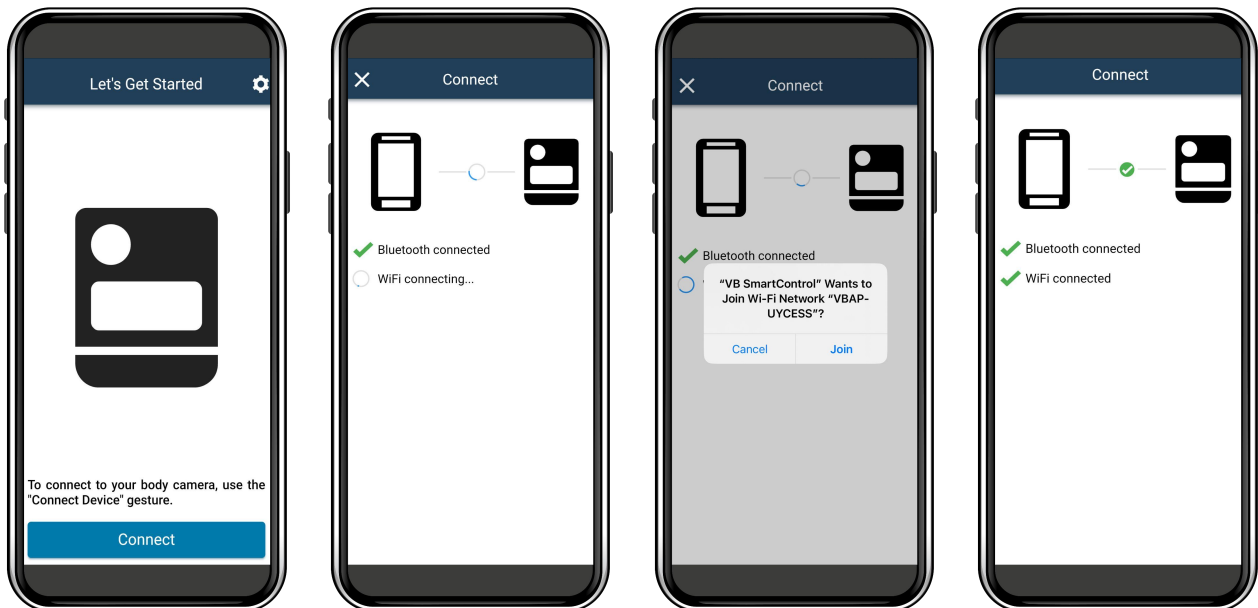
1. Navigate to the **Admin** tab.
2. Select the **People** pane.
3. Click the **Users** section.
4. Click **Go to User** next to the relevant user.
5. Click **Configure Mobile App for this user**.
6. A QR code will appear. Open VB SmartControl on the user's phone, hold the user's phone up to the screen, and click **Scan**. VB SmartControl will use the phone's camera to scan the QR code.



USE VB SMARTCONTROL

Users with the correct permissions can now use the VB SmartControl app in the field. To do so, assign a VB400 to a user as normal, ensuring that it is using a device profile which enables connectivity to the app. Then:

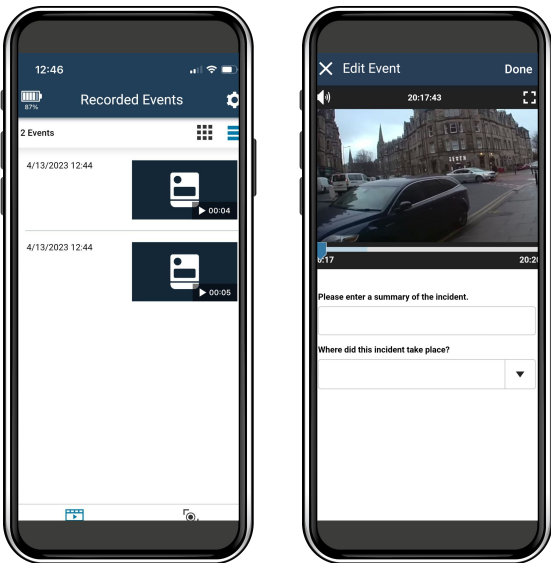
1. Undock the VB400.
2. **On the phone**, click **Connect**.
3. **On the VB400**, perform the previously-configured gesture which will prompt the camera to start searching for the app (if it has been configured). The VB400's top LED will flash pale blue when it is searching for the app, and dark blue when it is establishing a connection with the app.



VIEW DEVICE INFORMATION

To view information about the connected VB400:

1. Click the settings icon in the top right-hand corner.
2. In the **About** section, click **About the connected device**. You will be able to view the VB400's battery level.



WATCH AND TAG VIDEOS

To watch and tag videos on VB SmartControl:

1. Click the **Events** tab.
2. Optionally adjust whether the videos are presented in list or gallery mode in the top right-hand corner.
3. Click the video you want to review.
4. Tag the video as necessary, and click **Done**. The changes will be saved automatically.

USE THE LIVE VIEWFINDER

To use the live viewfinder on VB SmartControl, which enables you to see what your VB400 sees in real time, click the **Live View** tab.



Motorola Solutions Ltd. Nova South, 160 Victoria Street, London, SW1E 5LB, United Kingdom

Availability is subject to individual country law and regulations. All specifications shown are typical unless otherwise stated and are subject to change without notice. MOTOROLA, MOTO, MOTOROLA SOLUTIONS and the Stylized M Logo are trademarks or registered trademarks of Motorola Trademark Holdings, LLC and are used under license. All other trademarks are the property of their respective owners. © 2023 Motorola Solutions, Inc. All rights reserved. 07-2023 [ED-012-262-02]