

BORDER PROTECT

TRANSFORM YOUR BORDER SECURITY OPERATIONS WITH SITUATIONAL INTELLIGENCE



Operations depend on access to reliable, secure, and real-time data to maintain border security. You need a streamlined and intuitive way to operationalize tremendous amounts of data and multimedia from disparate systems including: video sources, CAD, RMS, SCADA/IOT, sensors, resource locations, alerts, social media and more. Converting information into actionable response is vital to the security of those working in Border Enforcement Security Task force (BEST) operations centers. Motorola's Border Protect solution provides data that is streamlined into a common operating picture, customized to your operations. Enhance your operations using real-time situational awareness to secure our border and keep personnel and assets safe.

STREAMLINE OPERATIONS

What if your mission critical communications and operational data sources were streamlined into a single intuitive operating position? What if you could instantly send out targeted emergency messages, warning tones to threat or mass notifications at a moment's notice? What if you could pull up any standard operating procedure (SOP) relevant to the situation at a click of a button? What if you could be one step ahead of any incident that could turn into an emergency? Border Protect provides real-time integration of your disparate operational command, control, communications, computers, intelligence, surveillance and Reconnaissance (C4ISR) data sources used in your Combat Information Center, Border Enforcement Security Operation Centers, or other command environments and converges them, to improve decision-making and achieve safer outcomes.

EXAMPLE

Agents are required to be the eyes and ears on the ground, but human abilities only go so far. There is extensive technology in place to support agents' daily border security detail that can be integrated into Border Protect: including: aerial drones and towers providing long range radar and camera video feeds of land, air and marine threats, pressure point sensors detecting foot or vehicle traffic, gate monitoring, border checkpoint records and more.

Border Enforcement Security Task Force Operations Centers can monitor multi-layered data from deployed security devices via Border Protect. Personnel gain real-time intelligence on suspicious activities, which are video mapped on a common operating picture to help determine where agents should be dispatched. Border Protect allows agents in the field to monitor maps and data via tablets and a range of mobile devices. With a holistic view of where threats are most likely to occur, higher command can turn that visibility into actionable and shareable intelligence, sending agents to locations that pose the greatest threat.

FEATURES

REAL-TIME VIDEO AGGREGATION & MANAGEMENT

Virtually monitor the land border, ports and air with unlimited simultaneous camera views from fixed, body-worn, recorded, or real-time mobile video feeds, all aggregated into one position from several video management systems (VMS), or even from multiple vendors. Easily reference the video source, date, time and location with full reporting and auditing functionality for after action analysis.

THREAT DETECTION AND ALERTING

Receive real-time alerts from C4ISR and sensors, including intrusion detection systems (IDS), perimeter sensors (RADAR/SONAR/CBRNE), access control systems, gunshot detection systems, cybersecurity, and weather alerts to support proactive enforcement and more informed coordinated emergency response or law enforcement interdiction. Physical security, access control mechanisms: control and monitoring of door locks, fire alarms, turnstiles / man-traps, vehicle barriers, duress buttons, and vault sensors.

IDENTITY MANAGEMENT SYSTEMS

Biometrics, card scanners, and other perimeter and border identification mechanisms, facial and gait recognition, including interfaces to external databases. Automatic Identification System (AIS) for vessels and aircraft used to help identify objects of interest.

STANDARD OPERATING PROCEDURES (SOPs) – STATIC & DYNAMIC WORKFLOWS

Highly configurable and customer definable workflows and procedures unique to your environment. Integrate and scale existing applications to support, streamline, and complete workflows. Create action plans that define sequences of steps within Border Protect that guide responders and officials through a series of actions when reacting to situations. The situation log created while executing an action plan records any actions taken during the response. Action plans implement the established best practices for an organization and are unique to each Border Protect environment.

UNIFIED VOICE AND DATA COLLABORATION

Integrate LMR communications to monitor and communicate directly with field personnel and distribute actionable intelligence through voice. Also, integrate push-to-talk applications (WAVE) to allow units to communicate no matter the device (computer, smartphone, and tablet), the frequency used or the agency. It also allows for state & local interoperability collaboration, as needed.

PERIMETER DETECTION

Actively monitor gates, ports, piers, airfields, and perimeter by having sensors and video detect any disturbance or breach and alert units immediately.

MASS NOTIFICATION

Activate automatic or manual alerts with several Mass Notification Systems (MNS) via SMS/MMS, email, LMR (voice and text), pre-recorded or text-to-speech telephone calls, smartphone applications, computer desktop pop-up, social media, cable TV channels, notification boards, and various other types of signage with the push of a button to inform personnel or civilians of the threat condition.

VIDEO SYNOPSIS

Integrate various video ingestion solutions to review hours of recorded footage in minutes to quickly identify events, behavior and suspects, items or people of interest. Filter based on color, direction, size, speed, of objects and other characteristics.

MOBILE CLIENT VIDEO AND PHOTO UPLOAD

Send short video clips and images to personnel in the field to support situational awareness.

ADVANCED SEARCH AND QUERY

Query personnel, national or federal records systems, and databases to quickly extract intelligence.

GEOSPATIAL MAPPING

Visualize all C4ISR available data from camera locations, radar, sensors, CAD incidents, field personnel, social media, and more on an intuitive map that can be customized with your agency's mapping layers. 2D and 3D mapping available.

ACTIVITY LOG

Audit all actions performed by the operator in a summary view to meet investigation and legal requirements, support training, and provide transparency to the community.

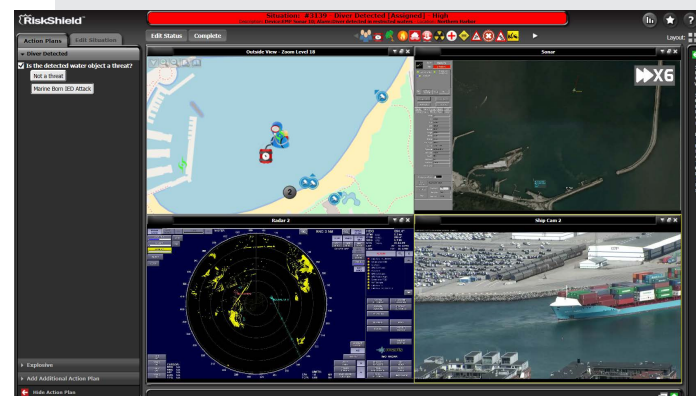
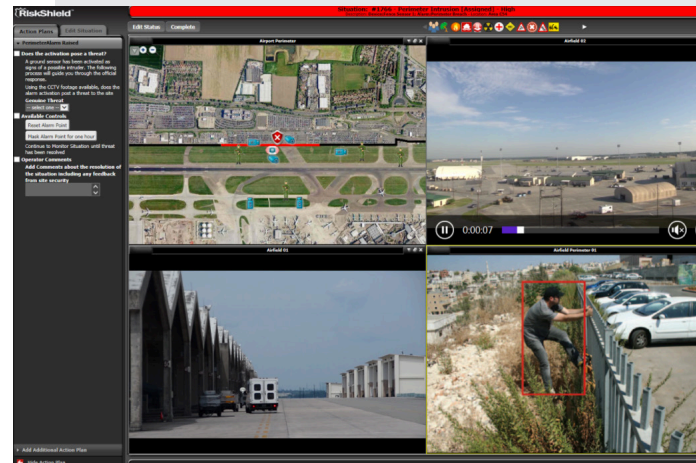
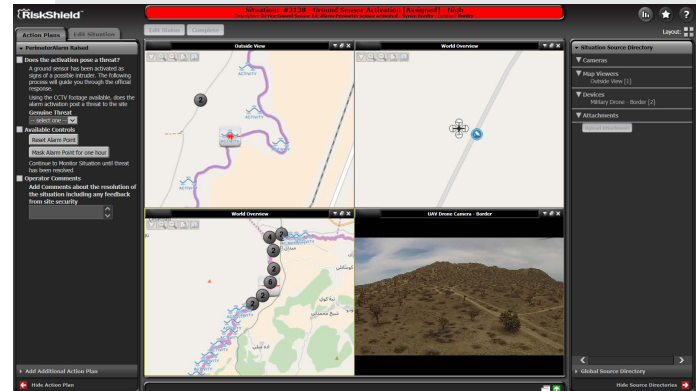
RULES & CORRELATION ENGINE

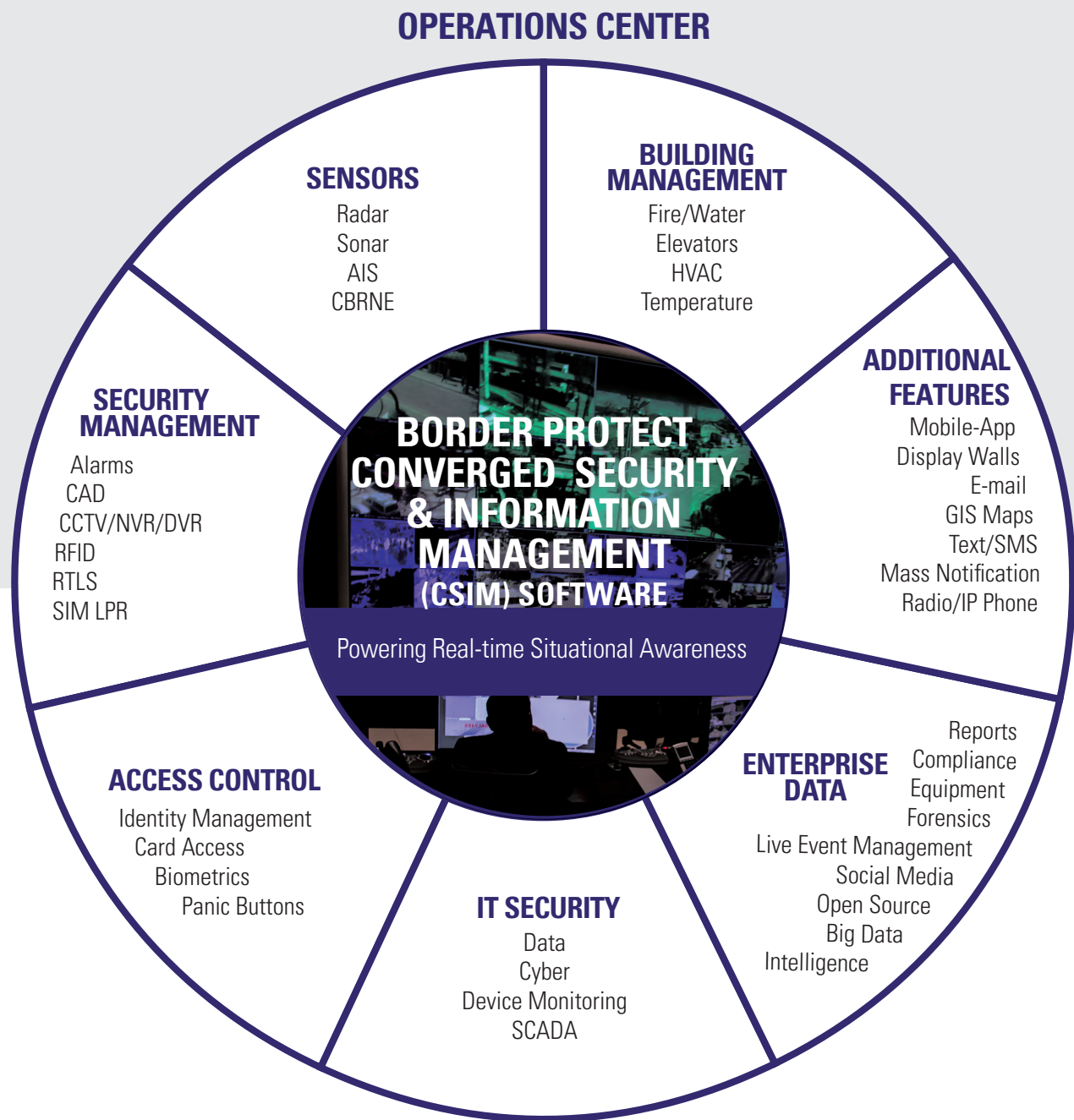
Automatically or manually associate related data together from disparate physical and cyber inputs for a more comprehensive threat assessment while providing command staff and management with simplified dashboard and reporting capabilities.

ON PREMISE. SCALEABLE. PROTOCOL AGNOSTIC.

Manage data no matter the volume, allowing installations to add or reduce data sources regardless of size.

ACTUAL PRODUCT PHOTOS





INVEST FOR TODAY AND THE FUTURE

Border Protect provides complete situational awareness in your operations center environment by leveraging your existing investments. By integrating all of your data and systems, your operations can take siloed data sources and create a comprehensive view and streamlined workflows.

OUTCOME OF OPERATIONS

A safe and secure border depends on personnel and technology working to maintain its security. With a secure, on-premise CSIM/PSIM platform, operations can achieve a big-data enhanced operating picture that provides more reliable and accurate information. Units protecting the border will gain heightened situational awareness by having instant access to critical information, and respond more quickly and intelligently to the threat at hand. Not only will units have the capability to collaborate more, they will also have the ability to seamlessly share information with state and local first responders. Border Protect is the solution that takes all your agencies data sources and brings them together into one unified picture, ultimately streamlining your operations.

ENHANCE YOUR OPERATING PICTURE

Border Protect is built to aggregate real-time information across border operations for enhanced information sharing, collaboration, and analysis. Now your emergency operator, threat analysts, agents, special forces, physical security officer and other responders can have instant access to real-time alerts, mass notifications, records and communications. Safeguard the border with the power of Border Protect.



Border Protect is a unified platform that meets security and network compliances for border operations. Designed to aggregate and analyze data from multiple inputs making the data meaningful and actionable. Increasing situational awareness with one common operating picture. Enabling you to be your best in the moments that matter.

For more information about Border Protect contact your Motorola representative or visit **MotorolaSolutions.com/BorderSecurity**

Motorola Solutions, Inc. 500 W. Monroe Street Chicago, IL 60661 U.S.A. 800-367-2346 motorolasolutions.com

MOTOROLA, MOTO, MOTOROLA SOLUTIONS and the Stylized M Logo are trademarks or registered trademarks of Motorola Trademark Holdings, LLC and are used under license. All other trademarks are the property of their respective owners. © 2017 Motorola Solutions, Inc. All rights reserved. 4-2018