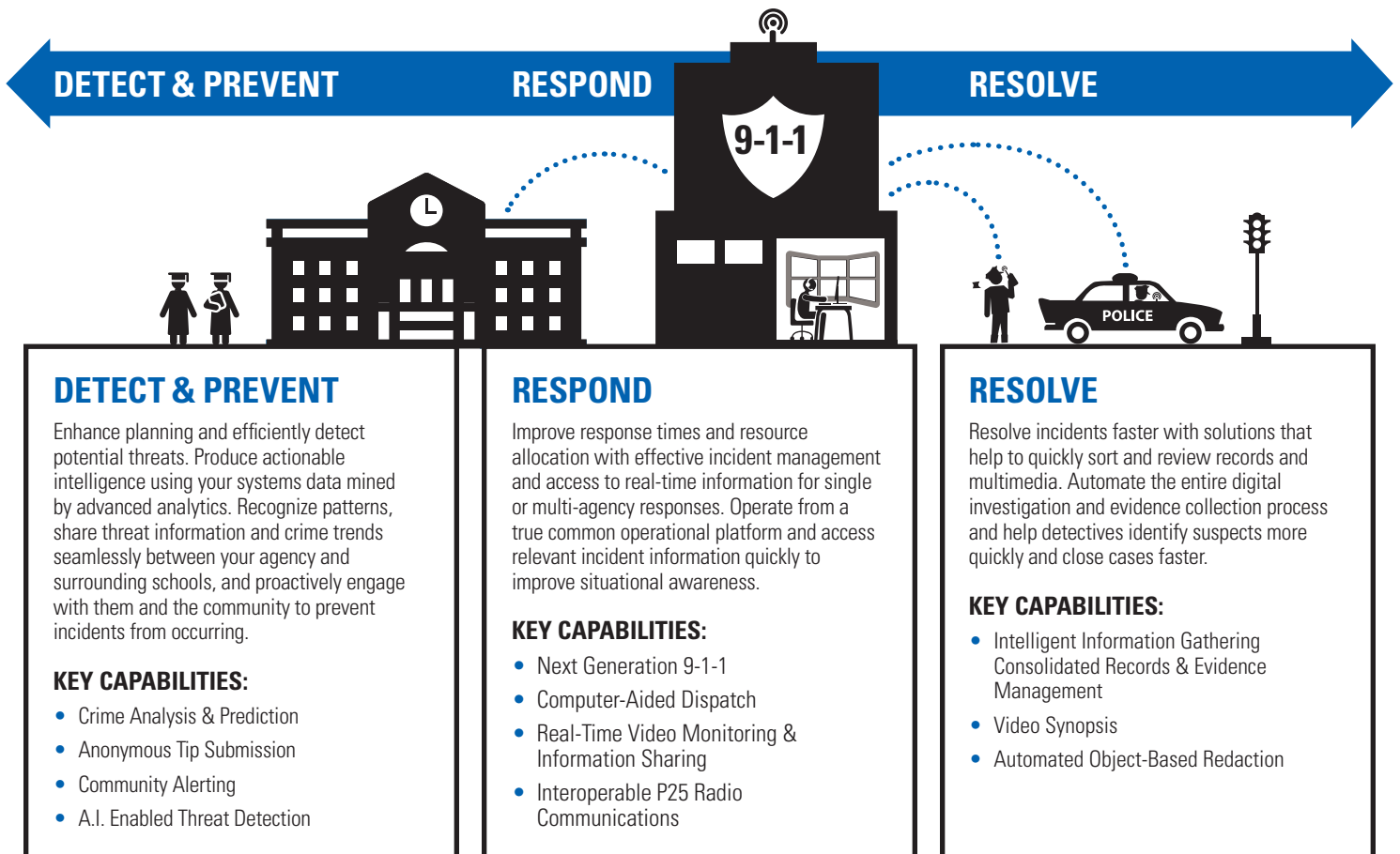


TRANSFORM EMERGENCY READINESS AND RESPONSE ON CAMPUS

Both higher education and law enforcement agencies are responsible for the safety and well-being of students. For law enforcement, ensuring safety in schools is an extension of their responsibility for public safety in the community. To make this possible, law enforcement agencies need to work closely with local universities and leverage real-time intelligence and situational awareness technology to detect and prevent emergencies before they occur and quickly respond to and resolve incidents when they do.

HIGHER EDUCATION SAFETY & SECURITY SOLUTIONS



DETECT & PREVENT

Higher Education Technology Opportunities

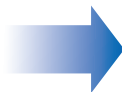
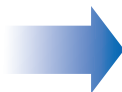
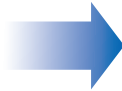
Without the platform to interact on an anonymous level students may not have the trust to inform public safety of illegal activity. Thus, alerting officials to suspicious activity around campus may not come naturally.

Communication among disparate departments can be fragmented, especially if there are security personnel involved on campus.

Limited law enforcement resources leaves gaps in security and the increased threat of illegal activity to occur in areas that are not enforced.

With so many cameras and multimedia content, the ability to view and analyze real-time footage becomes a challenge for a campus of any size.

Inability for first responders to view calls for service and other responders locations.



Motorola Solutions Value Add

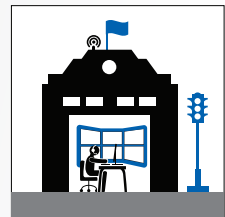
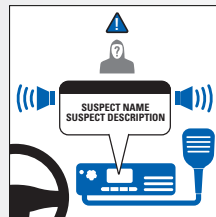
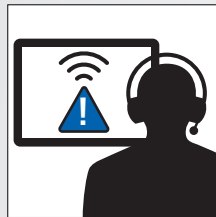
Through the anonymous chat feature in the **TipSubmit** application investigators were able gain additional information on the suspect's first name and physical description.

Law enforcement are able to interoperate with campus security via **P25 Radio System**, allowing instant communications when needed most. .

With **Avigilon H4 Camera Platform** all areas of campus are covered, even when there are no first responders in the area. Exceptional image quality and features, cameras become your operations additional point of view.

Utilizing **CommandCentral Aware and Avigilon Self Learning Analytics**, law enforcement analysis are able to immediately monitor all campus security cameras in one common operating picture, while applying artificial intelligence to analyze video trends and movements to detect crime.

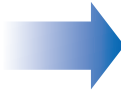
Campus law enforcement can remotely view video and access control system alerts with **CommandCentral Aware**.



RESPOND

Higher Education Technology Opportunities

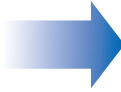
Inability to pinpoint all first responders location to best determine what closest units should be dispatched when an incident occurs, leads to delayed response times on campus.



Motorola Solutions Value Add

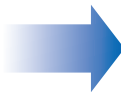
Computer-aided dispatch pulls up resources on a map and automatically dispatches nearest units to the location. By dispatching closest units seconds are saved.

Lack of situational awareness for responders on campus arriving to an emergency. Disparate data and information among teams leaves gaps within several units who may be responding to a multi agency call such as an active shooter event.



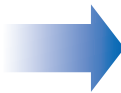
CommandCentral Inform allows supervisors on-scene use to display collaboration data showing entry and rally points across multiple devices, ensuring team members are informed. In parallel, **CommandCentral Aware** provides analysts access to video from external and internal cameras to monitor access and egress points.

Every day, officers face challenges and threats as they keep their community safe. Video evidence can be the difference between prosecution and acquittal.

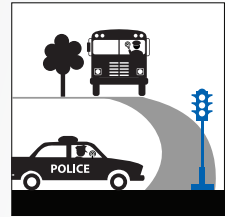
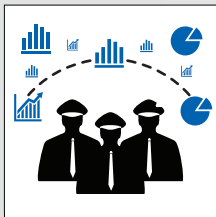
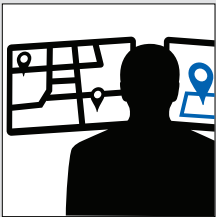


Si500 Body-Worn Camera & Sr600 In-Car Camera captures video and audio providing accurate and indisputable proof of incidents that occur on campus, while strengthening trust of the student body and surrounding community.

When responding to an emergency incident in a dorm, sporting event or area with limited or area with limited WiFi & cellular coverage, first-responders need a reliable source communication.



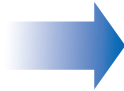
P25 Systems and Radio allow mission-critical voice communications no matter where the incident is taking place, ensuring the right information is communicated to all involved responders.



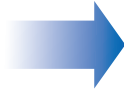
RESOLVE

Higher Education Technology Opportunities

Analyzing disparate databases and information takes time away from investigative searches through endless unlinked crime information.



Sifting through hours and days of video footage looking for a particular person or object takes a magnitude of time and resources.



Hand-written reports take officers out of the field focusing their time on documentation rather than patrolling the campus.



Excessive amount of multimedia content makes it difficult for agencies to store and manage video at the same rate is coming in. On-premise storage is costly and requires many resources to manage video data.



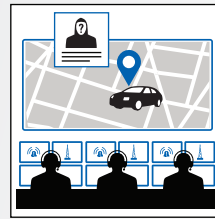
Motorola Solutions Value Add

Utilizing the Search feature within **Records & Evidence**, investigators are able to query disparate local, regional, state, and federal databases to identify the suspect.

Utilizing the **Avigilon Appearance Search** application within Aware analysts are able to locate specific persons or items within hours of video footage taken from an exterior campus camera.

Capture Mobile Application provides the ability to capture secure digital evidence with the simplicity of a smartphone.

CommandCentral Vault allow law enforcement the ability to store and access all evidence via the cloud. All collected digital evidence is automatically correlated with CAD incident number and stored for later recall for prosecution or public discovery.



Sources:

1. Everytown for Gun Safety. <https://everytownresearch.org/school-shootings/>
2. National Center for Education Statistics. <https://nces.ed.gov/pubs2017/2017064.pdf>
3. National Center for Education Statistics. <https://nces.ed.gov/fastfacts/display.asp?id=804>

