

**UNIFIED.
ACTIONABLE.
SECURE.**

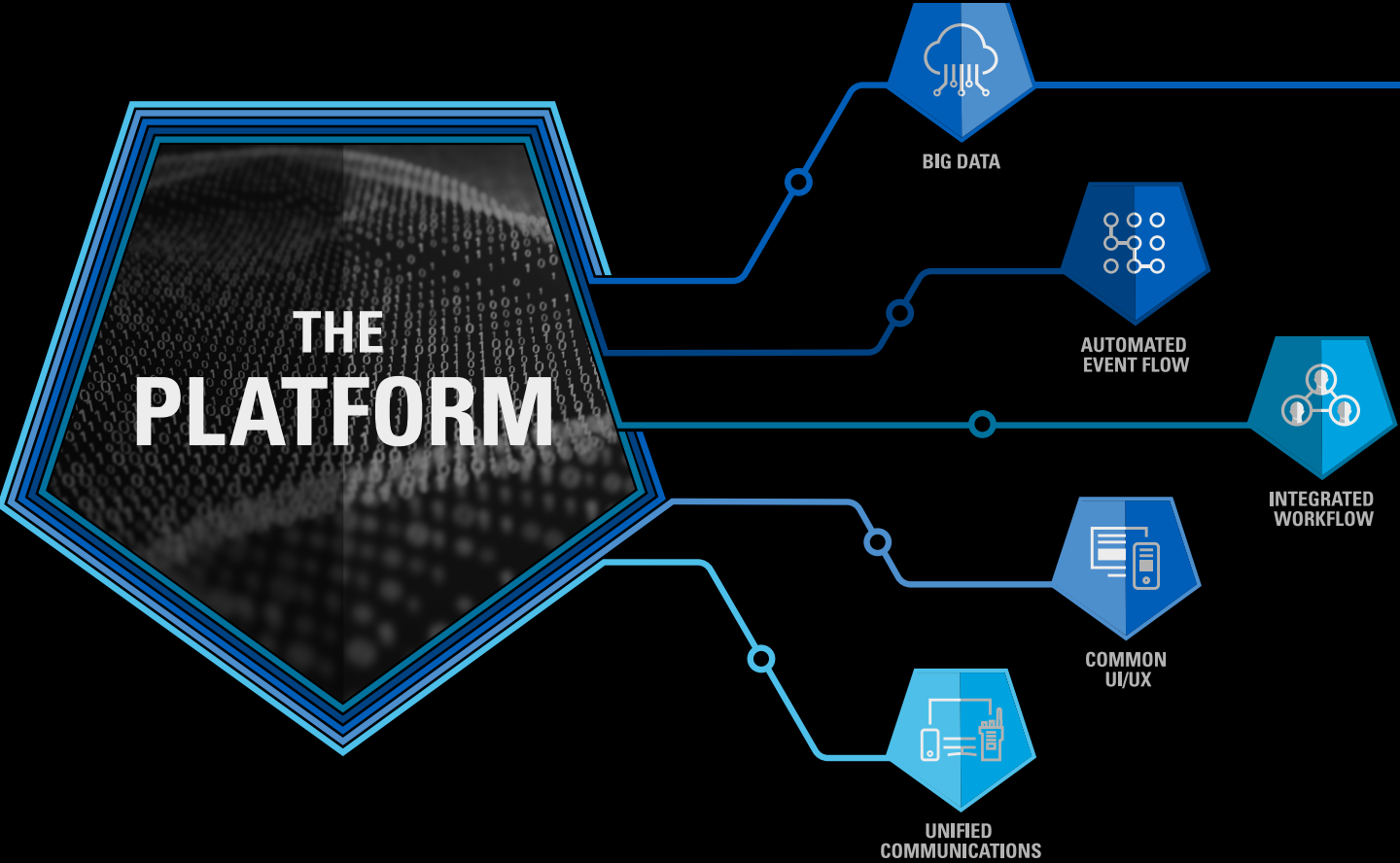
**THE
PLATFORM**

Unify your Data and Workflows on a Secure Foundation



TRUSTED TECHNOLOGIES BUILT ON A COMMON PLATFORM

Sharing information safely between teams, workflows and different technologies accelerates operations and adds intelligence. Motorola Solutions offers a unique ecosystem of solutions built on a common platform to provide you with the intelligence you need. The Platform unifies your data and workflows on a secure foundation, so you can collaborate more easily and make more informed decisions.



Our Platform is **unified**, centralizing your data for simplified access, powerful integrations and seamless growth. It's **actionable**, so you can integrate real-time decision making with automation and deep analytics. And it's **secure**, so you can trust that your operational data is safe both inside and outside your organization.

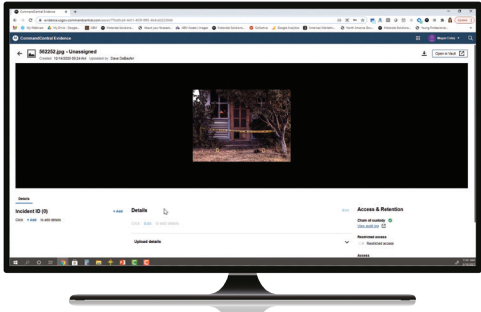
Experience the Platform by centralizing big data, automating events, integrating your workflows, adopting a consistent user experience and unifying communications across teams.



CENTRALIZED DATA FUELING ANALYTICS

You are faced with an overwhelming amount of data - and it's only continuing to increase. It's structured and unstructured. It's coming in from so many different sources that it's easy to miss connections and trends. And no matter how much data you have, it won't be useful unless you can put it to work for your organization. Big data can be transformative to operations if it can be centralized and harnessed to fuel analytics.

The Motorola Solutions Big Data Platform unifies data across your operations - from video feeds and multimedia records to citizen inputs and group communications - and enables powerful analytics on a secure and certified cloud platform. This helps organizations make more informed decisions, recognize trends, and gain insight to improve efficiency and effectiveness.




UNIFIED

INTEGRATED DATA MANAGEMENT

The variety, velocity and volume of data flooding your agency can be overwhelming. Centralize and manage your growing and disparate data across your operations.


ACTIONABLE

ACCELERATED DATA INSIGHTS

Your data is only as powerful as what you can do with it. Uncover linkages and extract new insights with deep analytics that support real-time decision making.


SECURE

CERTIFIED DATA COMPLIANCE

The more people and systems that interact with your data, the higher the risk. Meet critical compliance requirements, secure data interactions and audit user activity with trusted, certified solutions.



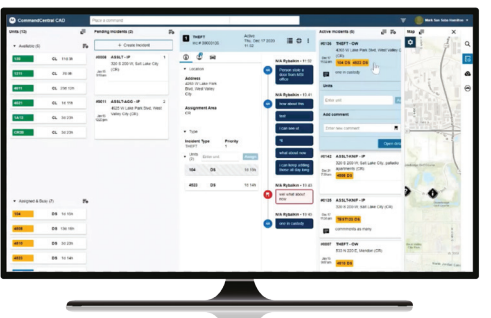
AUTOMATED EVENT FLOW

INTEGRATED WORKFLOW

DETECT, ANALYZE, ACT

Conventional workflows, which are typically handled manually on a one-by-one basis, can lead to missed events or delayed response. What if there was a way to identify critical activities that need your attention, and automate the rest? Automated event flows save your team time and resources. For non-critical events, the workflow can be scripted to require little to no human intervention. Potentially critical incidents can be surfaced for you to verify, so you can coordinate your response with real-time data and take appropriate action.

Safety, efficiency and productivity are deeply interrelated. The technologies that make us safer can also make us better at everything we do - especially when unified by a common platform. With automated event flows, you can address the unique challenges of your operation and ensure nothing is missed.



ONE COMMON OPERATING PICTURE

Workflows can be complex. It takes a variety of applications and tools to accomplish critical tasks, and introducing new technologies often introduces new complexities. Many times applications are outdated, have different experiences for users, and have - at best - “swivel chair” integration. Teams today are frustrated by data silos, outdated tools, and inefficient application integration, all forcing them to enter data multiple times, in multiple places, using tools that don’t look and operate the same.

Replacing these disparate, disconnected, and costly processes with one consistent system helps leverage your investments into streamlined and efficient workflows that ease frustration and save time. A unified platform with applications working together seamlessly offers a “single pane of glass” and improves response. Deliver the right information to the right people at the right time with integrated workflows.


UNIFIED


ACTIONABLE


SECURE


UNIFIED


ACTIONABLE


SECURE

BUILD YOUR DATA PIPELINE

The more places your data is stored, the less you can do with it. Unified data enables more comprehensive rules and event scenarios on massive data sets.

FROM DATA TO DIGITAL INTELLIGENCE

Alerts are coming in from every application and there is no human way to inspect them all. Manage an unmanageable amount of data with real-time alerts and automated events. Program a response or alert a human in the loop to take an action.

RULE-BASED THREAT DETECTION

Technology never gets bored, tired or distracted. Establish guidelines in your system and trust constantly vigilant analytics to react quickly to security threats.

SHARED DATA BETWEEN APPS

Repeatedly entering the same data wastes valuable time. Exchange relevant information with the right users at the right time, leading to more efficient operations and better outcomes.

COMMON APPLICATION SERVICES

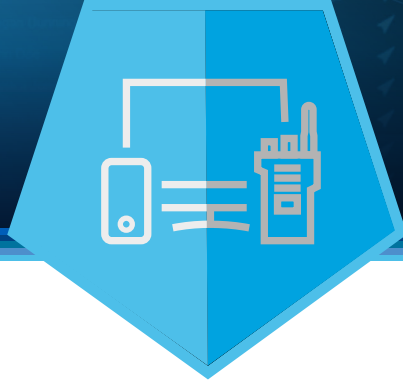
Inconsistency across applications increases frustration and risk. Access critical information, such as location, maps, groups and identities, within each application for consistency across operations.

COMPLETE CONTROL OF YOUR DATA

Some things are “need-to-know” — and most people don’t need to know. Manage user permissions to search, view, share, and edit files, for the perfect balance of efficiency and security.



COMMON USER EXPERIENCE



UNIFIED COMMUNICATIONS

THE POWER OF HUMAN-CENTERED DESIGN

The public safety industry presents unique and evolving challenges in regard to the tools you need to do your job well. Our human-centered design teams develop intuitive applications that streamline workflows across the industry's first and only public safety ecosystem. We believe that the power of great design can make people safer.

A consistent user experience, across a cohesive suite of applications, means you can focus less on where to click and more on the tasks and people in front of you. Adding or restricting users has never been easier with the ability to control data access across the workflow from a single interface. Seamlessly navigate within and transition between applications with confidence and clarity.




UNIFIED


ACTIONABLE


SECURE

COHESIVE DESIGN SYSTEM

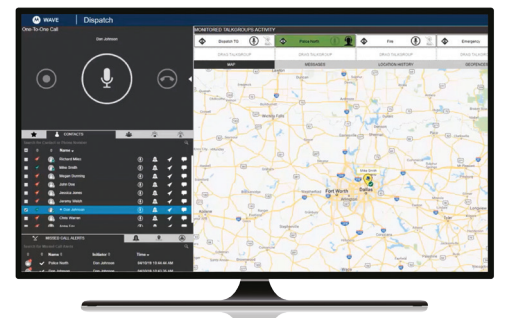
When lives are on the line, the last thing you should be worried about is where to click. All of our applications share the same design DNA, unifying the look and feel so you can focus on what matters most.

INTENTIONALLY INTUITIVE

It's time to use solutions that work with you, not against you. We've spent thousands of hours side-by-side with our customers to develop solutions that work the way you do.

CONTROLLED USER ACCESS

Independently managing permissions for multiple applications is painful. Setup, permission, and deactivate users for the entire workflow from one simple, administrative interface.




UNIFIED


ACTIONABLE


SECURE

CONNECTED TEAMS

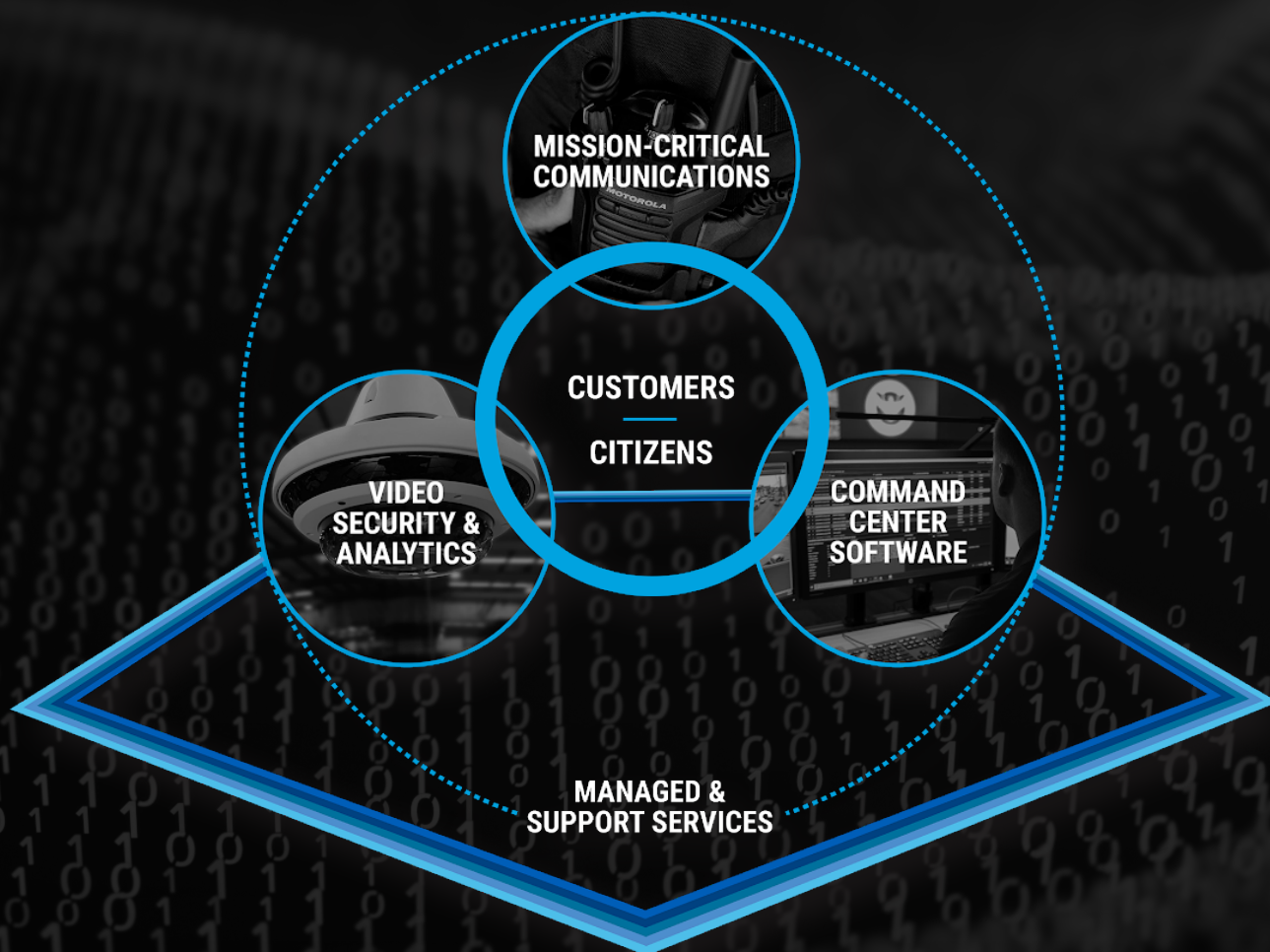
When communication slows, it puts your operation at risk. Map communications over your existing workgroups so you can connect your teams, no matter their role, location, device or network.

INFORMED DECISION-MAKING

You shouldn't have to juggle devices and apps to be part of the conversation. Quickly make decisions, mobilize teams and improve safety by sharing the right information with the right people at the right time.

TRUSTED COMMUNICATIONS

Don't expose your team's communications to prying eyes and ears. From asset management tools to private channels and encryption, trust that your communications are protected.



EXPERIENCE COLLABORATION LIKE NEVER BEFORE

Motorola Solutions has created the first and only technology ecosystem built for Public Safety. Founded on human-centered design, reinforced with 90 years of mission critical expertise, and created to evolve alongside you, it's the ecosystem only we could build. Radio and broadband communications are unified. Software solutions are integrated from end-to-end. Video is intelligently captured and analyzed. And services ensure your technology is always advancing. So you can hear, speak, see and be your best in the most demanding moments.

This trusted ecosystem was built on our common Platform to bring consistency to your data, response, workflows, user experience and communications. It provides a secure foundation, unifies your people and technologies, and strengthens your decision-making so you can collaborate like never before. Experience The Platform difference today - only with Motorola Solutions.

For more information about The Platform,
please visit: www.motorolasolutions.com/platform



Motorola Solutions, Inc. 500 West Monroe Street, Chicago, IL 60661 U.S.A. 800-367-2346 motorolasolutions.com

MOTOROLA, MOTO, MOTOROLA SOLUTIONS and the Stylized M Logo are trademarks or registered trademarks of Motorola Trademark Holdings, LLC and are used under license. All other trademarks are the property of their respective owners. © 2021 Motorola Solutions, Inc. All rights reserved. 04-2021