



# WAVE DISPATCH

## CENTRALIZED COMMUNICATIONS ANYWHERE

Simplify day-to-day operations with WAVE™ Dispatch. Login from any Internet connection and get access to all the communication tools you need to manage your resources and coordinate an effective operation. Regardless of location, with WAVE Dispatch you're just a click away.

### SETUP OPERATIONS ANYWHERE

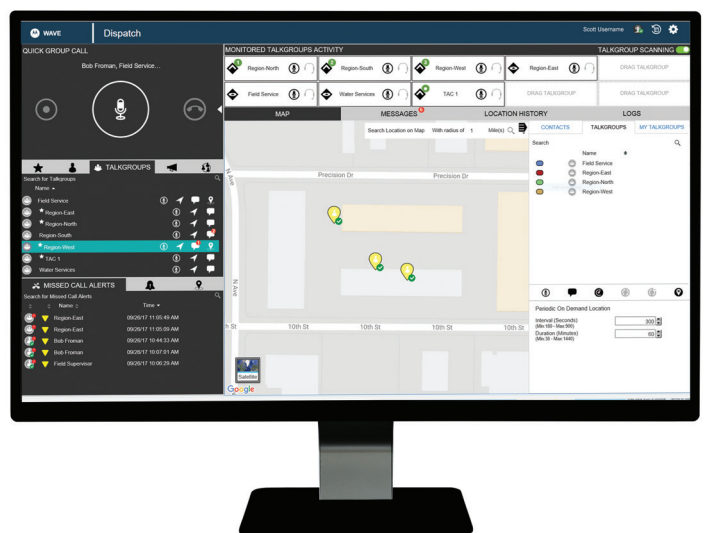
WAVE Dispatch lives in the cloud, not on your PC, freeing you from maintenance and manual software updates. Securely sign into WAVE Dispatch from anywhere with an Internet connection and a standard web browser.

### COMMUNICATE IN AN INSTANT

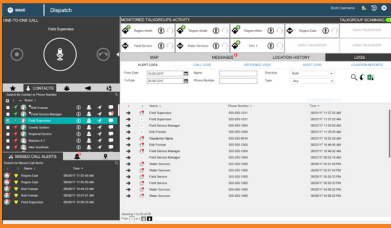
Keep in touch with your teams and field personnel wherever they are with WAVE PTT (Push-To-Talk). Monitor communication traffic and instantly connect with groups and individuals at the touch of a button.

### SHARE THE DETAILS

When the details are important, ensure your team has all the information they need. With integrated messaging you can send text, photos, video and files to groups and individuals in a familiar message thread format. See the location of your team, search for an address or point of interest and improve coordination and planning.



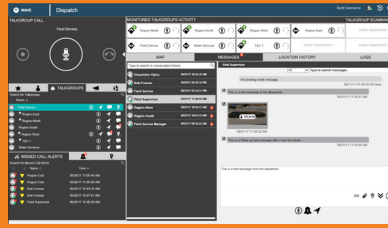
## KEY FEATURES



### Voice Dispatching

Monitor up to 20 talkgroups.

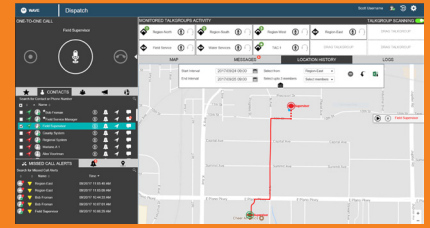
- One-to-one, group and broadcast PTT
- Presence (Available, Do Not Disturb, Offline)
- Talkgroup scanning with priority
- Voice message fall back
- Call logging and recording
- Supervisory override
- Alerts



### Integrated Messaging

Exchange multimedia information.

- Text
- Photos (GIF, JPEG, PNG)
- Videos (MPEG-4)
- Audio files (AAC, MP3)
- Documents (PDF)
- Location data



### Location and Mapping

Locate and see members on a map.

- See users on a map
- Selectable map views
- Automatic and on demand location updates
- Find an address or point of interest
- Location history and replay
- In-map communication

## COMPUTER REQUIREMENTS

<b>Hardware</b>	Processor: Dual Core 2.1 GHz (minimum) Intel Core i5 or above RAM (Recommended): 8 GB (minimum) A standard sound card supporting a headset and speaker
<b>Operating System</b>	Windows 8.1/10 Pro or Enterprise 32-bit version Windows 8.1/10 Pro or Enterprise 64-bit version
<b>Browser</b>	Internet Explorer 11, Chrome 45 and higher
<b>Data Connectivity</b>	2 Mbps or greater
<b>Input Accessory Devices</b>	External Microphone (1/8" jack) Headset with PTT (USB) Internal Microphone (supported by system hardware)
<b>Output Accessory Devices</b>	External Speakers (USB, 1/8" jack) Headset with PTT (USB) Internal Speakers (supported by system hardware)

## SYSTEMS AND CAPACITIES

<b>WAVE Systems</b>	WAVE OnCloud
<b>Talkgroup Capacity</b>	20
<b>Contact Capacity</b>	300
<b>Text Messaging</b>	Up to 2000 characters
<b>Image Messaging</b>	GIF, JPEG, PNG / 15MB
<b>Video Messaging</b>	MPEG-4 / 15MB
<b>Audio Messaging</b>	AAC, MP3 / 15MB
<b>Document Attachments</b>	Adobe PDF

Learn more at [www.motorolasolutions.com/WAVE](http://www.motorolasolutions.com/WAVE)



Motorola Solutions, Inc. 500 West Monroe Street, Chicago, IL 60661 U.S.A. [motorolasolutions.com](http://motorolasolutions.com)

MOTOROLA, MOTO, MOTOROLA SOLUTIONS and the Stylized M Logo are trademarks or registered trademarks of Motorola Trademark Holdings, LLC and are used under license. All other trademarks are the property of their respective owners. © 2019 Motorola Solutions, Inc. All rights reserved. 01-2019