



REAL-TIME VIDEO ANALYTICS

SEE MORE OF THE CITY WITH LESS RESOURCES



As more video is captured – how do you manage your finite resources to monitor for infinite possibilities? Manual event monitoring is inefficient. You need real-time, accurate detection and notifications of incidents to respond proactively and use your resources more effectively. Real-time video analytics by Motorola allows your agency to see more while reviewing less.

REAL-TIME ANALYTICS FOR FASTER DETECTION AND ALERTING

Motorola's real-time video analytics supplement your workforce, eliminating the need to manually monitor video streams. You get highly-accurate event detection based on preset rules and alerts, tailored for specific use cases and locations.

You can define violation locations, troubling behaviors, unusual human actions and other anomalies in advance and receive alerts when such events occur, enabling rapid responses to incidents as they emerge. Alerts for loitering or crowding, vehicle exit/entry violations or a change in scene conditions can all indicate the potential for officer engagement, which might be missed otherwise.

Increase your video coverage and analytics across thousands of cameras – the scalable solution is configured so the detection agent is located in the camera for backhaul efficiency. Cameras can detect for several criteria simultaneously, creating a more thorough method for accurate event detection. The result is reliable reporting enabling command staff to better utilize resources on the street.

FREE UP RESOURCES AND INCREASE AWARENESS



Intelligence Operator

Acts as 'constant eyes' across entire camera system, initiating proactive responses to incidents and providing a real-time view on scene for better intelligence to first responders.



Crime Analyst

Rules-based analytics quickly identify items of interest (IOI) during investigations – even across multiple cameras and video streams – for faster, more efficient analysis.



Video Analyst

Easily identify alert-triggered incidents in the past and share with prosecutors for a quicker video review process.

INTELLIGENCE-LED PUBLIC SAFETY SOLUTIONS (ILPS)

Our ILPS solutions integrate multiple data sources and apply analytics and automation to provide actionable intelligence.

We provide capabilities for personnel in the command center or on the street that allow for better strategic, incident, operational and investigative support so you can act in real time and be ready for what's next.

CENTRALIZE YOUR INTELLIGENCE

Video analytics capabilities are integrated into a single SaaS platform so that detection and alerting is provided to multiple applications – eliminating the need to use disjointed tools and ensuring that users can realize the benefits in a command center or the field. Users can correlate live video and alerts with inputs from multiple data sources such as social media or CAD and quickly share that intelligence with anyone – enabling better incident support, proactive policing and faster investigations for safer and smarter communities.

HIGHLY-CONFIGURABLE DETECTION RULES

Movement/Line Crossing: Detects a person/vehicle moving/crossing a line in a predefined area.

Loitering: Detects a person staying inside a predefined area for longer than a predefined time period.

Crowding: Detects a crowd if the density of people in a predefined area exceeds a predefined threshold (percentage) for a predefined time period.

Occupancy: Detects a group where the number of people in a predefined area exceeds a predefined threshold (number) for longer than a predefined time period.

Stopped Vehicle: Detects a vehicle that stops in a predefined area for longer than a predefined time period.

Speed Analysis: Detects if the average vehicle speed in a predefined area drops below a predefined threshold for longer than a predefined time period.

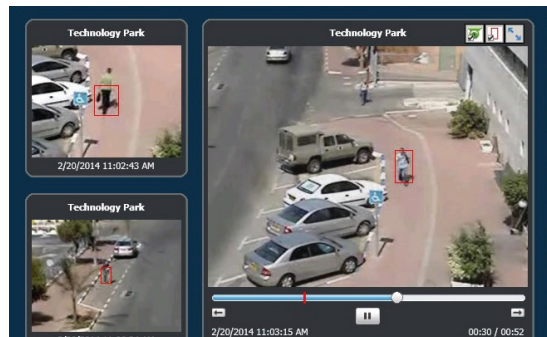
Suspicious Object: Detects a static object that has been left unattended in a predefined area for longer than a predefined time period.

Asset Protection: Detects a predefined static object removed or obscured from a camera's field of view for longer than a predefined time period. Up to 20 static objects can be defined in a camera's field of view.

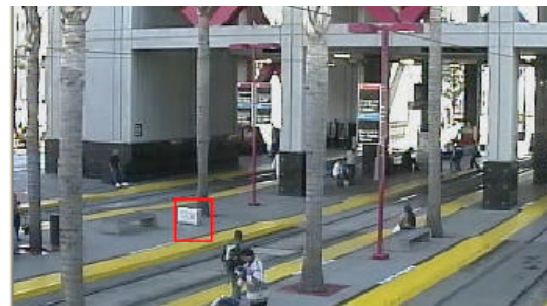
Lighting Detection: Detects a light (signal) appearance in a predefined area of the camera's field of view for longer than a predefined time period.

A FORCE MULTIPLIER FOR A FASTER RESPONSE

Motorola's real-time video analytics help your agency leverage your video investment by automatically monitoring your surveillance systems to improve the overall security and safety of your community. Automated analytic notification allows for a faster response to incidents, often saving resources prior to theft or destruction. With long-term use, video analytics act as a force multiplier, helping you optimize your allocation of resources to trouble areas, shorten response times, improve officer effectiveness and safety, and even prevent crime.



Several video camera streams are monitored in real-time for agency-configured criteria.



Real-time video analytics detects a suspicious object, alerting users if left unattended for longer than the predefined time period.

For more information about our Intelligence-Led Public Safety offerings, contact your Motorola representative or visit motorolasolutions.com/ILPS