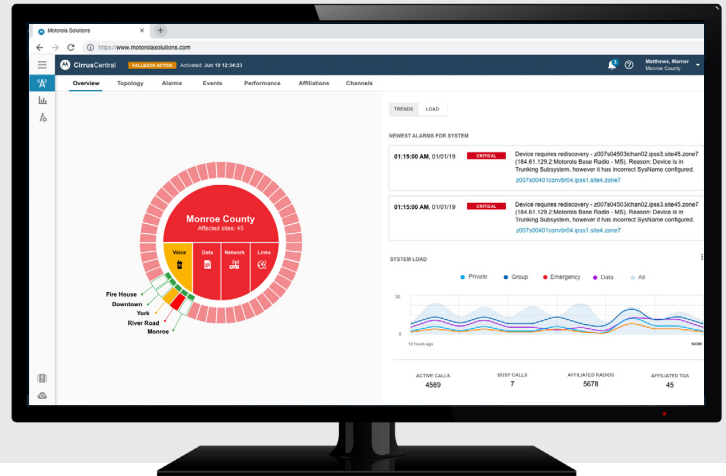


CIRRUSCENTRAL CORE

PROTECT YOUR COMMUNICATION LIFELINE



To maintain reliable communication, your ASTRO 25 radio system is designed with multiple layers of resiliency. CirrusCentral Core adds yet another layer of protection for ASTRO 25 radio systems.

CirrusCentral Core is a secondary core that resides safely in our secure cloud. When needed, it can take over key core functionality to maintain communication between your ASTRO 25 radio and dispatch sites. CirrusCentral is geographically removed from local events or disasters that could take out your on-premise equipment.

The switch to CirrusCentral is automatic. Provisioned radio sites will automatically switch to the cloud-core when connections to the on-premise core is lost. Radio users can then make wide-area calls that include dispatchers and users on other sites.

CirrusCentral is purchased as a subscription service, delivered over our secure cloud platform. We take on the maintenance responsibility to keep service up to date and operational.

SECURITY

Cloud security is paramount for mission-critical systems. We employ a holistic risk-management approach that encompasses people, processes and technology.

NETWORK MANAGEMENT

When your on-premise core is unavailable, your on-premise system management apps may also be unavailable. This is why we require CirrusCentral Core to be paired with CirrusCentral Management. The cloud-based management tools provide anywhere access to monitor performance and manage faults of cloud-connected sites and subscribers.

The intuitive user interface clearly indicates the status of the cloud-core and its connectivity to provisioned sites.

KEY FEATURES



ENHANCED RESILIENCE

Geo-redundant core



CLOUD-BASED

No civil engineering required



ALWAYS UP TO DATE

Hassle-free maintenance



PREDICTABLE COSTS

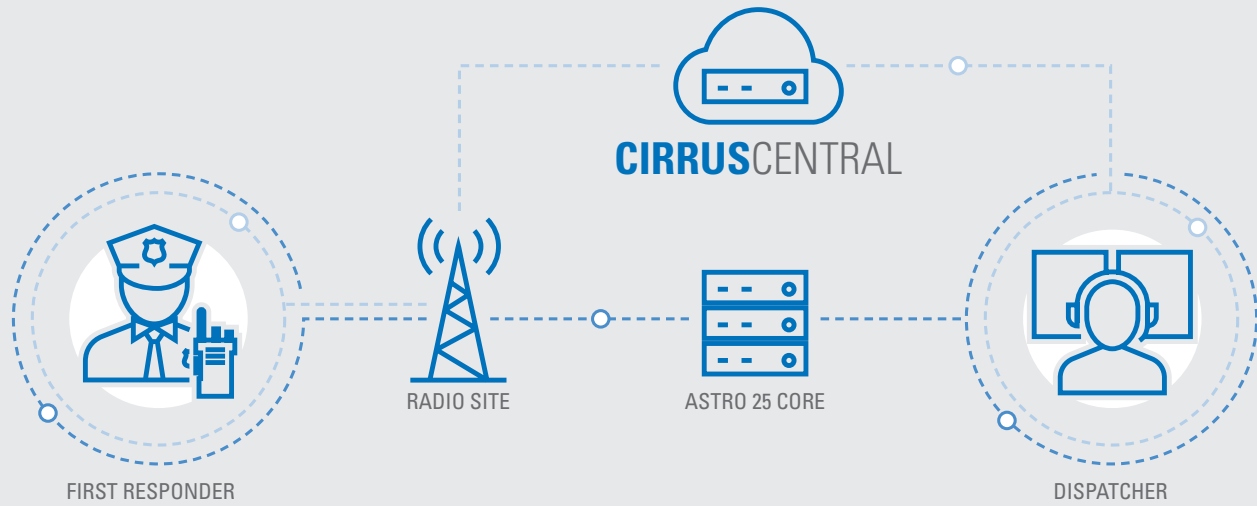
Easy to budget subscription



SCALABLE

Pay per site pricing





USE CASES

PROTECTION AGAINST COMMUNICATION DISRUPTIONS

CirrusCentral can strengthen an existing ASTRO 25 system by providing an alternate audio path between radio sites and dispatch. If the sites lose communication with the ASTRO 25 core, they will automatically switch to the cloud-core, thereby enabling communication between users who are on cloud-provisioned sites connected to CirrusCentral.

PATH TOWARD A FULL CLOUD STRATEGY

Many agencies see value in cloud services but are not ready to fully commit their critical communications to an unfamiliar architecture. Deploying CirrusCentral for secondary use purposes allows agencies to begin a gradual migration to cloud services, but at a measured pace matching their level of comfort.

SUPPORTED CALL TYPES

ASTRO 25 FDMA Talkgroup Call
ASTRO 25 TDMA Talkgroup Call*
ASTRO 25 Emergency Talkgroup Call
ASTRO 25 Emergency Alarm
ASTRO 25 Clear Voice Call
ASTRO 25 End-to-End Encrypted Voice Call*

SUPPORTED SYSTEMS

ASTRO 25	Trunking Cores (L & M), Release A7.18 and later
	Up to 100 trunked sites
Dispatch Consoles*	CommandCentral AXS
	MCC 7500E
	MCC 7500

* 2021 capabilities

For more information, please visit motorolasolutions.com/cirruscentral-core



Motorola Solutions, Inc. 500 West Monroe Street, Chicago, IL 60661 U.S.A. motorolasolutions.com

MOTOROLA, MOTO, MOTOROLA SOLUTIONS and the Stylized M Logo are trademarks or registered trademarks of Motorola Trademark Holdings, LLC and are used under license. All other trademarks are the property of their respective owners. © 2020 Motorola Solutions, Inc. All rights reserved. 09-2020