



# KEEP YOUR EYES UP AND YOUR FOCUS FORWARD

**LEX L11 MISSION-CRITICAL LTE DEVICE**





## MADE FOR THE MISSION AHEAD

When hardware, software, and accessories work seamlessly together, the result is a device that works seamlessly for you.

Introducing the LEX L11 Mission-Critical LTE Device, designed with public safety users in mind. Every feature and function has been thoughtfully considered in this rugged device to make it easy to operate. It boasts loud and clear audio, intuitive operation, and long battery life.

Rugged and durable yet streamlined and slim, you can count on the LEX L11 to perform when it's needed most.

## KEY FEATURES AND BENEFITS



### INTUITIVE CONTROLS MAKE OPERATION NATURAL

- Dedicated Push-To-Talk Button
- Dedicated Emergency Button
- Dedicated Talkgroup Rocker Switch
- Two Programmable Buttons



### EXTEND YOUR REACH WITH RADIO COLLABORATION CAPABILITY

- Remote Control Radio's Folders, Channels and Volume
- Remote Emergency button capability for Motorola Solutions TETRA and APX™ radios
- PTT capability over the LMR network, through a connected Motorola Solutions TETRA or APX portable radio



### HIGH QUALITY AUDIO PERFORMANCE

- Noise and Echo Cancellation
- Dual Front Facing Loud Speakers
- Howling Suppression
- Holster with Audio Tunneling Technology



### SECURE MOBILE PLATFORM

- Trusted Boot
- Real-Time Device Protection
- Data-at-Rest (DAR) and Data-in-Transit (DIT) Security
- Auditing and Logging
- Supports Secure Device Management



### PERFORMS IN THE HARSHTEST ENVIRONMENTS

- MIL-STD-810G for Drop and Shock
- IP-67 rated



### ACCESSORIES TO MEET YOUR NEEDS

- Standard and High Capacity Battery Options
- Field Swappable Battery
- Standard and Fast Charging Cables
- Holsters, Vehicle and Desktop Cradles, Single and Multi Unit Chargers and 3.5mm Headsets



# THE ART OF MISSION-CRITICAL DESIGN

The LEX L11 is designed with wearability and accessibility in mind, providing intuitively simple access in both tough and unforgiving situations.

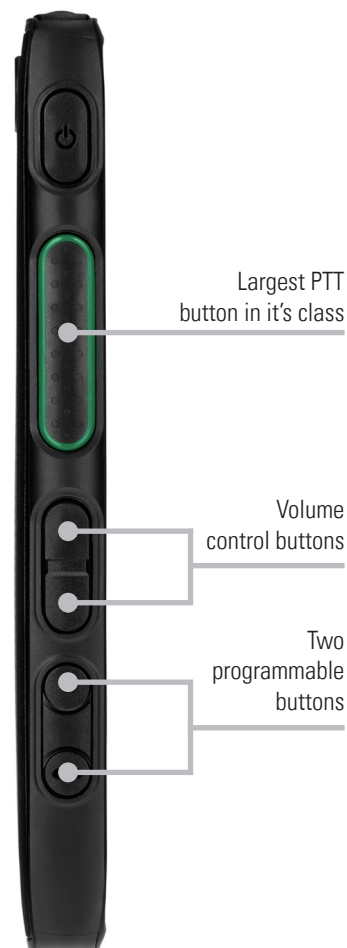


## INTUITIVE CONTROLS MAKE OPERATION NATURAL

Keep your eyes up and your focus forward with the ability to access all of the mission-critical capabilities you need by touch alone.

### QUICKLY INITIATE COMMANDS WITH TWO PROGRAMMABLE BUTTONS

The LEX L11 has two programmable buttons located on the side of the device. The LEX L11 allows you to customize the experience with the capabilities and features you need most. Each button has two functions, triggered by a short or long press. Answer or end a call, toggle covert mode on or off, mute speakerphone, launch a specific application, or enable near hands free video and image capture when programmed to automatically open the camera application and take a picture.





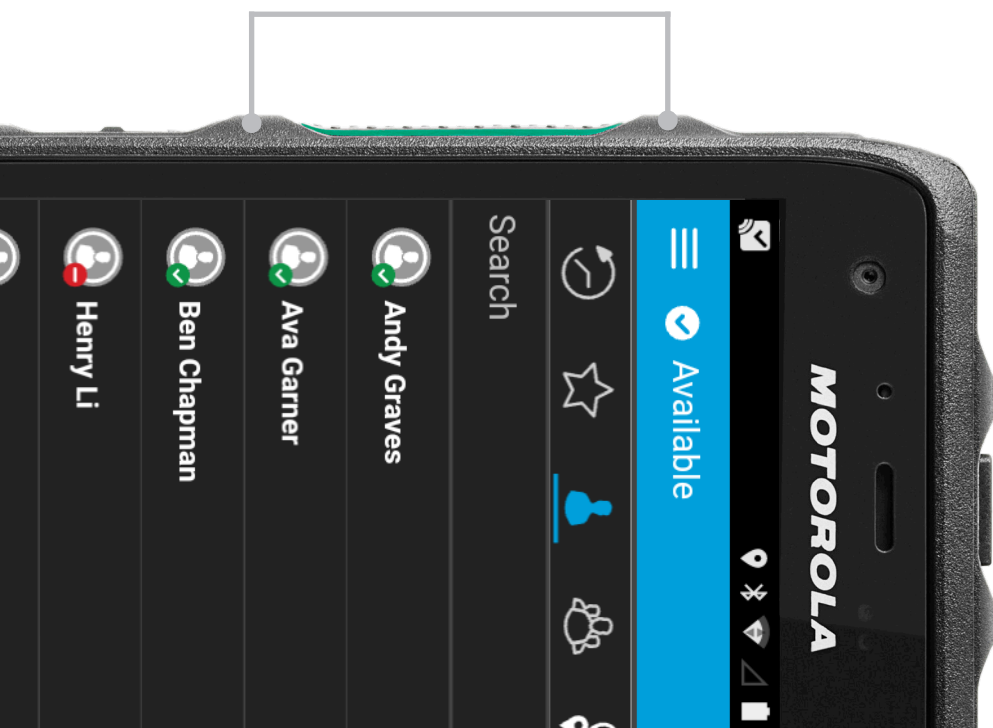
## KEEP YOUR EYES UP AND FOCUS FORWARD WITH A DEDICATED PUSH-TO-TALK BUTTON

Quickly communicate and be able to stay in constant contact with your team thanks to the extremely large and dedicated push-to-talk button that's designed for use with your thumb, multiple fingers, or even a gloved hand. With specially designed ramps located on either side, it allows you to intuitively locate the button by feel alone, this is particularly ideal for high stress situations. If the LEX L11 has been dropped, the raised protective ridges help prevent accidental activation.



Keep your eyes up and focus forward with a dedicated push-to-talk-button

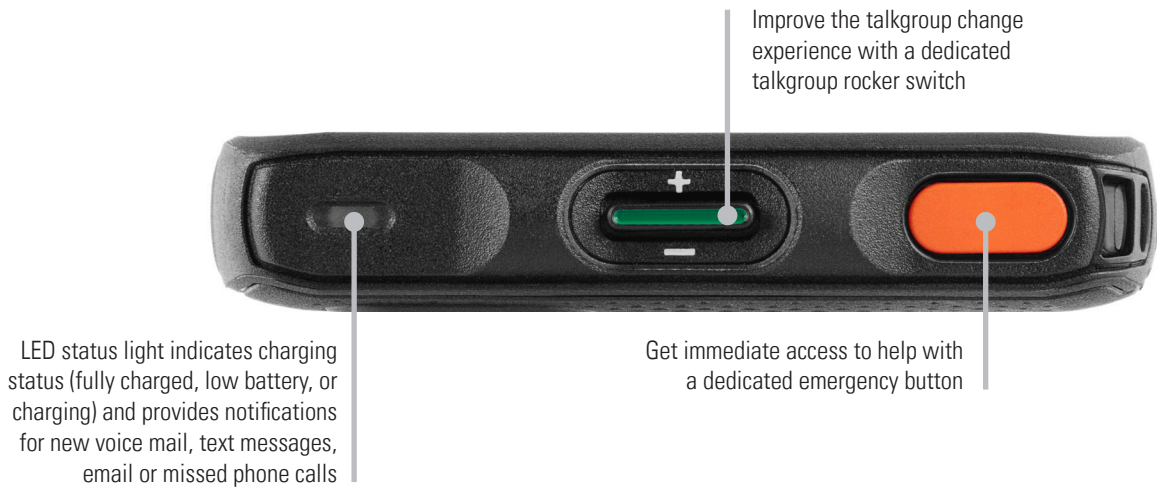
Raised protective ridges





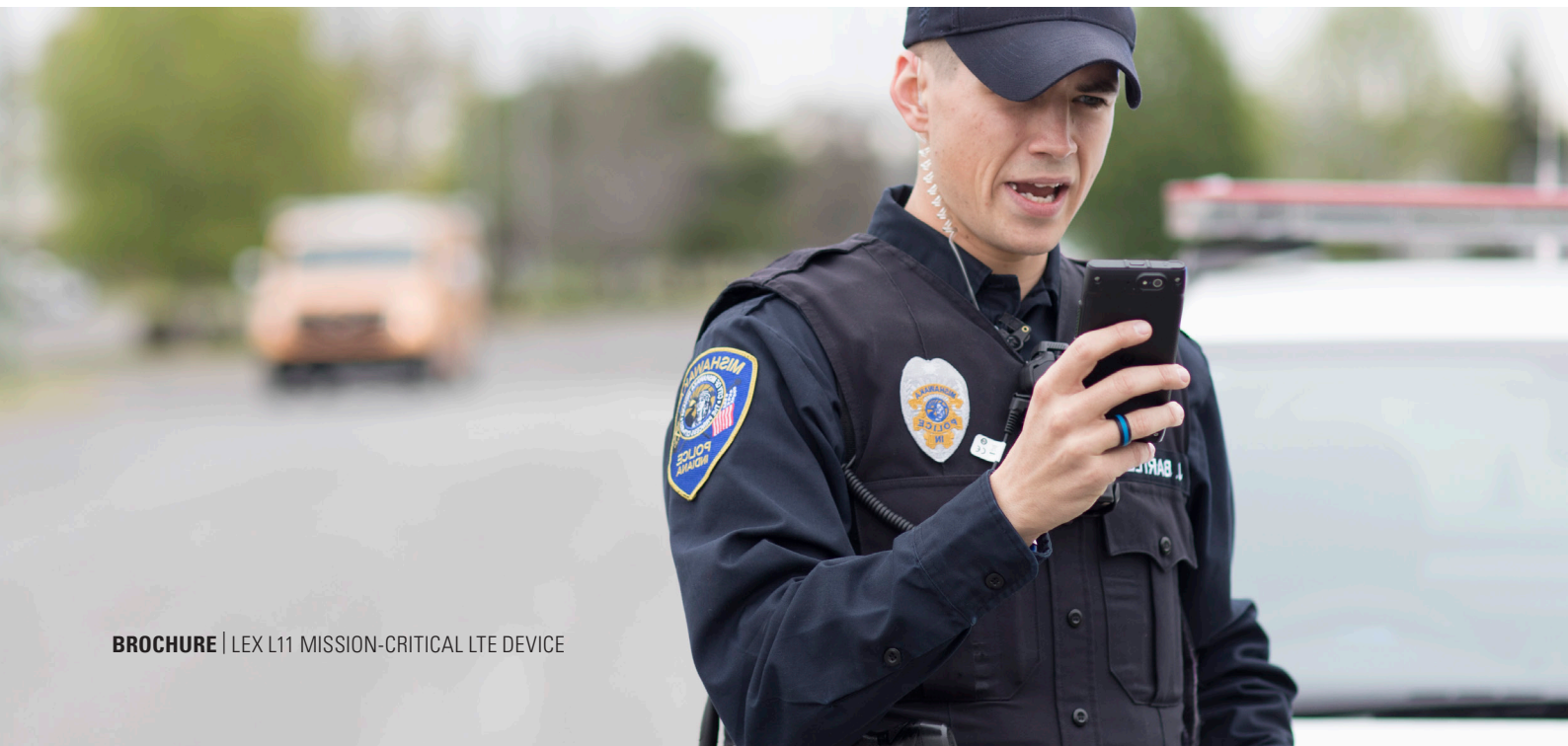
## IMPROVE THE TALKGROUP CHANGE EXPERIENCE WITH A DEDICATED TALKGROUP ROCKER SWITCH

Manage your talkgroup communications more efficiently with a unique talkgroup rocker switch that has been strategically located at the top of the LEX L11. Change talkgroups quickly and easily without having to unholster the device, keeping your eyes focused on what's in front of you. For added clarity, the LEX L11 can provide you with radio like channel change voice announcements.



## GET IMMEDIATE ACCESS TO HELP WITH A DEDICATED EMERGENCY BUTTON

In the event of an emergency, the call for help simply cannot wait. The LEX L11 has a dedicated and highly visible emergency button that when pushed will send an alert to dispatch and other command staff when used with an application that supports emergency button capability. With the push of a button you will get immediate access to help.





## HIGH QUALITY AUDIO PERFORMANCE

OFFERING EXCEPTIONALLY LOUD AND CLEAR AUDIO NO MATTER WHAT

In an emergency, communications need to be clear and immediately understood. That is why the LEX L11 has been designed to let you hear and be heard clearly, reducing distortion, cancelling background noise, and suppressing unwanted feedback caused by other devices when in close proximity of each other. It's also tuned to minimize latency in PTT communications and further optimizes audio quality even when holstered.

### ELIMINATE UNWANTED FEEDBACK WITH HOWLING SUPPRESSION TECHNOLOGY

When devices in close proximity are affiliated with the same talkgroup and a device initiates a PTT, a feedback loop often occurs. This screeching or howling noise isn't just annoying -- it can disrupt critical communication when lives are on the line. The LEX L11 has howling suppression audio technology built into the device which suppresses this unwanted effect resulting in clear and uninterrupted conversations.

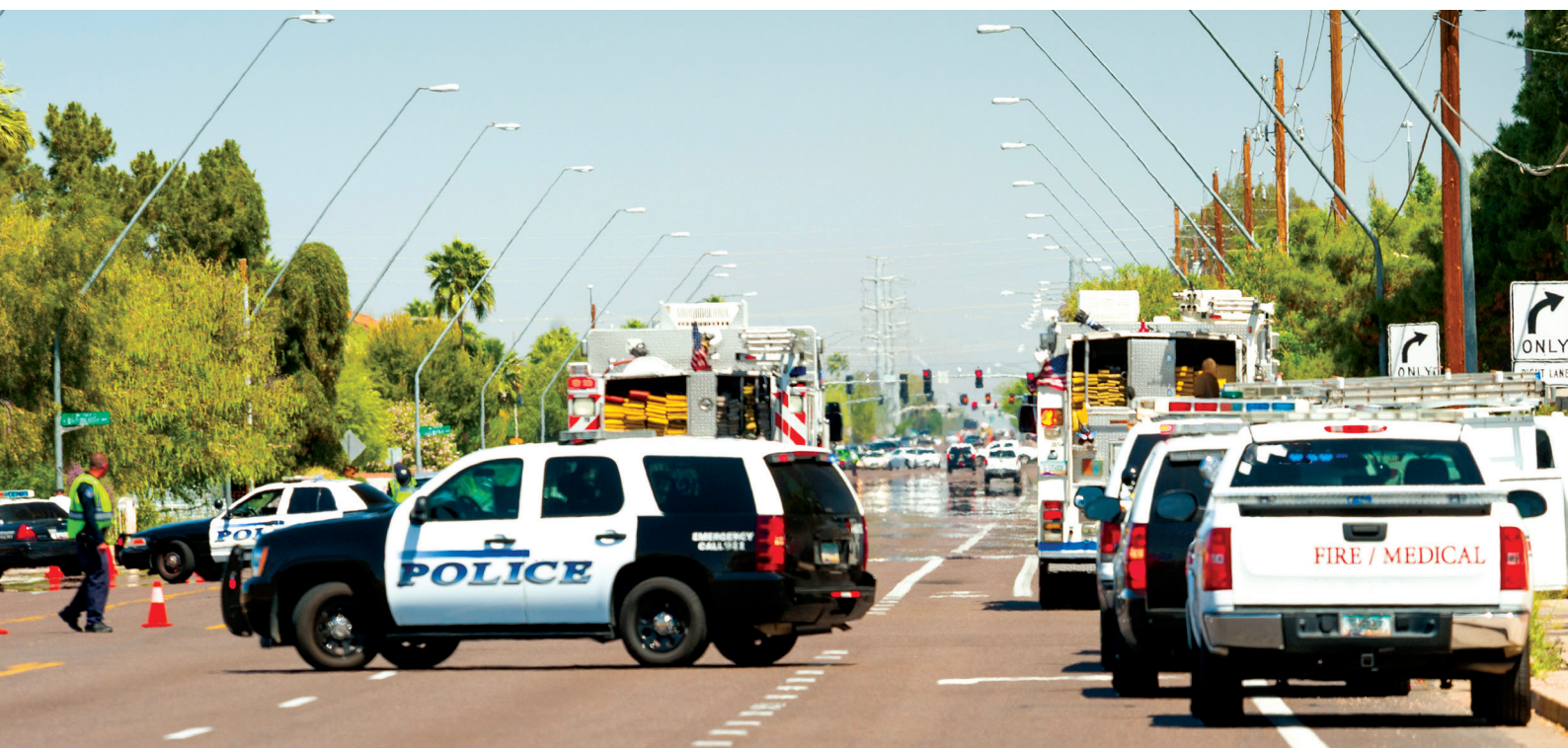
### IMPROVED AUDIO PERFORMANCE EVEN WHILE HOLSTERED

A traditional belt holster typically blocks the phone's external speaker which causes a significant decrease in audio quality making it difficult to properly hear. When the LEX L11 is holstered the outgoing audio is funneled more effectively in the direction of your ear making it easier to hear.



### DUAL FRONT-FACING SPEAKERS

Dual front-facing speakers provide up to 112 dBSPL of loudness. Even at 30 cm away from the source the outgoing audio is measured at 96 dBPhon of loudness. The audio profile of the LEX L11 is on par with traditional Land Mobile Radios.







## PERFORMS IN THE HARSHTEST ENVIRONMENTS

IP67 AND MIL-STD-810G RATED

Wherever the mission takes you or whatever working conditions you face, you need a device that's as tough and durable as they come. The LEX L11 is designed for constant use in tough, unforgiving environments. Protected by a ruggedized exoskeleton and Gorilla Glass, the LEX L11 exceeds the MIL-STD-810G standard for drop and shock testing. Don't let rain or water slow you down because the LEX L11 is waterproof, not just water resistant. It has been certified at IP67 rating meaning it can withstand complete water immersion for up to 30 minutes at a depth of one meter without any physical or performance damage. Don't worry about rain, dust, extreme temperatures, or even the occasional drop. Rugged and durable yet streamlined and slim, you can count on the LEX L11 to perform when you need it most.



## EXTEND THE REACH OF YOUR LEX L11 WITH RADIO REMOTE CONTROL

### RADIO REMOTE CONTROL AND AUDIO ROUTING

You can remotely manage and control your Bluetooth connected Motorola Solutions portable TETRA or APX radio directly from the LEX L11 with the radio collaboration capability - quickly and easily manage the radio's folders, channels, and volume. Leverage the convenience of Push-to-Talk capability over the LMR network, through your connected Motorola Solutions TETRA or APX portable radio. From a single interface you can stay connected to both LTE and LMR networks with ease. You can also remotely activate the radio's emergency button by pressing the dedicated emergency button on the LEX L11.



# SECURE MOBILE PLATFORM

MULTIPLE LEVELS OF SECURITY PROTECT YOUR MISSION CRITICAL DEVICE, DATA, AND COMMUNICATIONS

## TRUSTED BOOT PROCESS

The LEX L11 checks the authenticity and integrity of the firmware during the device boot processes. If during this process the firmware fails integrity or authenticity checks, the firmware is prevented from being executed. This ensures the LEX L11 is executing trusted unmodified firmware.

## REAL-TIME INTEGRITY MONITORING

Real-time integrity monitoring is included. This detects and prevents tampering of firmware and the injection of malware into the running firmware.

## OPERATING SYSTEM AND APPLICATIONS HARDENING

The Operating System and applications on the LEX L11 are security hardened following and adapting industry best practices and standards. These include the United States Department of Defense (DoD) Security Implementation and Guidelines (STIGs), Center for Internet Security (CIS) Benchmarks, and Motorola Solutions' internal standards.

## REAL-TIME PROTECTION OF OPERATING SYSTEM AND APPLICATIONS

The LEX L11 includes multi-layer, real-time threat protection to detect and protect against operating system (kernel and services) and application exploits and attacks, such as device rooting, privilege escalation, zero-days, code execution flow attacks, malware installation / execution, bypass of internal kernel security and access controls.

## DEVICE USER AUTHENTICATION

The LEX L11 supports configurable single factor and multi-factor authentication, including PIN and fingerprint.

## DATA-AT-REST AND DATA-IN-TRANSIT SECURITY

Data is protected while at rest and in transit. Credentials, certificates, and keys are securely stored.

## AUDITING / LOGGING

Security and operational event logging is done by the operating system and applications to produce retrievable audit trails for troubleshooting, security monitoring and forensics.

## SECURE DEVICE MANAGEMENT AND CONFIGURATION

The LEX L11 provides support for secure device management based on industry standards, with over-the-air monitoring and control capability including: remote configuration, remote firmware and software upgrades, application whitelisting and over-the-air wipe and lock capability.

## POLICY-BASED CONTROLS

Policy-based security controls restrict which applications may run on the LEX L11, as well as which applications the user may access. Additionally the device can restrict which device resources the applications and the user may access, for example Wi-Fi, Bluetooth®, and camera.





## ESSENTIAL SERVICES FOR LEX L11

SUPPORT WHEN YOU NEED IT

### RELY ON EXPERT REPAIR

State-of-the-art diagnostics equipment, repair tools and replacement parts helps ensure your LEX L11 devices are protected from normal wear and tear and back in operation within five days. All devices are returned to factory specifications and updated with the latest firmware. Our service centers are certified to comply with ISO9001.

### ACCESS TECHNICAL SUPPORT

Our experienced engineers are available 8x5, Monday - Friday (excluding public holidays), to help isolate and resolve any issues you may have with your LEX L11 devices. These dedicated professionals effectively troubleshoot and resolve your issues efficiently.

### EXPAND YOUR COVERAGE

While our LEX L11 devices are built for superior performance, accidents can happen. We offer expanded coverage and support that includes: repairs for accidental damage, three-day repair turnaround time, 8x5 remote technical support, and two-way shipping.

## ESSENTIAL SERVICES FOR LEX L11 - AT-A-GLANCE

SERVICES	WARRANTY	ESSENTIAL	ESSENTIAL WITH ACCIDENTAL DAMAGE
Coverage Period	1 year	3 years	3 years
Hardware Repair	Manufacturing defects only	Normal wear and tear	Normal wear and tear AND accidental damage
Remote Technical Support	8x5	8x5	8x5
Priority Repair	NO	YES	YES



## ACCESSORIES TO MEET YOUR NEEDS

ENSURES EASE OF USE  
AND MISSION-CRITICAL  
ACCESSIBILITY

Optimize your device with a suite of available accessories for the LEX L11. From batteries to chargers and holsters to cradles, you can expand and customize the LEX L11's functionality, so you have the options you need to get the job done.



## AUDIO SOLUTIONS



**3.5mm EARBUD WITH INLINE  
MICROPHONE AND PUSH-TO-TALK**



**3.5mm TWO-WIRE EARPIECE  
WITH TRANSLUCENT TUBE**



**SUPPORTS OTHER 3<sup>rd</sup> PARTY  
3.5mm AND BLUETOOTH ACCESSORIES**

## CARRY SOLUTIONS



**LEX L11 HOLSTER WITH  
AUDIO ROUTING TECHNOLOGY**



**VEHICLE CRADLE**

## ENERGY SOLUTIONS

### DUAL BATTERY OPTIONS ARE AVAILABLE

NEVER SLOW DOWN JUST SWAP OUT THE DEPLETED  
BATTERY FOR A NEW ONE



**SINGLE UNIT  
DESKSET CRADLE**

Charge the LEX L11 and it's  
spare battery at once



**MULTI UNIT CHARGER**

Charge multiple units simultaneously  
for more efficiency



**HIGH CAPACITY**

5,000 mAh



**STANDARD BATTERY**

2,500 mAh



To learn more about how you can leverage the power of LEX L11 while keeping your eyes up and focus forward visit [www.motorolasolutions.com/LEXL11](https://www.motorolasolutions.com/LEXL11)

Motorola Solutions Ltd. Nova South, 160 Victoria Street, London, SW1E 5LB, UK.

MOTOROLA, MOTO, MOTOROLA SOLUTIONS and the Stylized M Logo are trademarks or registered trademarks of Motorola Trademark Holdings, LLC and are used under license. All other trademarks are the property of their respective owners. © 2020 Motorola Solutions, Inc. All rights reserved. (03-2020)

