

# Release Notes

## VehicleManager™ 8.0.266

### Overview

The hosted VehicleManager service is scheduled to be updated with new features and modifications for Users and Agency Managers. These updates enhance the user interface, expand our analytical tool offerings, and introduce security best practices.

### Release dates

The software updates will become live at the following date and time:

- VehicleManager - National: **March 2nd, 2026**

This document was released on the following date:

- External Distribution: **March 2nd, 2026**

### Affected system

The updates will be applied to the following server:

- <http://vm.motorolasolutions.com>

### Motorola Solutions Blog

To view more Vehicle Intelligence Release Notes, announcements, and news, visit the [License Plate Recognition](#) topic in the [Motorola Solutions Blog](#).

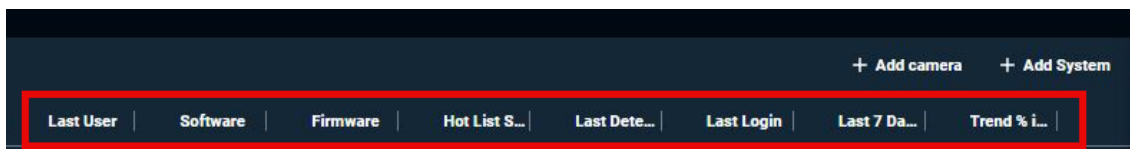
# New features

VehicleManager has the following new features and enhancements:

## Client Status in System Management [VVM-60325]

Additional **Client Status** columns have been added to the **Cameras and Systems List** in **System Management**.

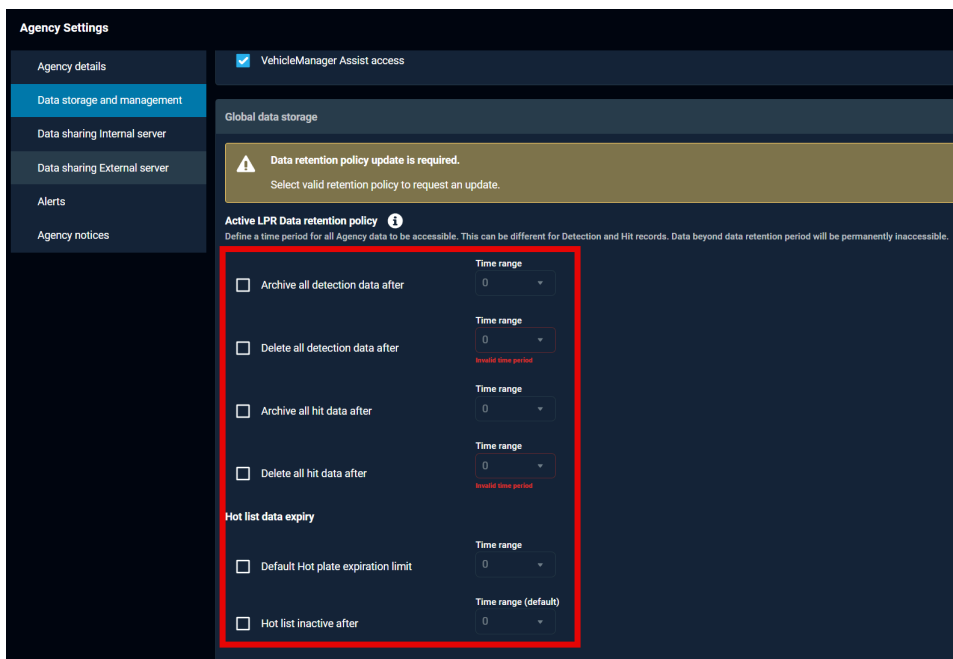
- The following new columns are now displayed in the table view: **Last User, Software Version, Firmware, Hot List Sync, Last Detection, Last Login Time, Last 7 Day, Trend Last 7 Day.**



## Default Data Retention Policy [VVM-59772]

After **March 31st, 2026**, all Agencies that have not configured their data retention policies will have a default data retention period applied. **Please configure your agency's specific data retention policy within VehicleManager immediately.**

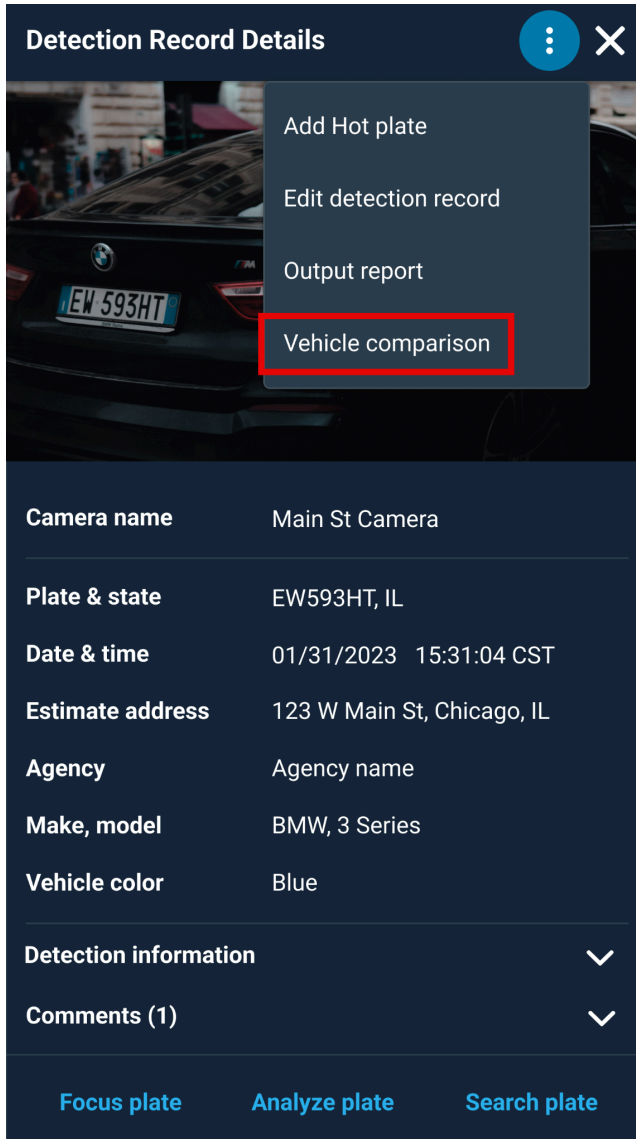
- Agency Managers can update their Agency's data retention policy by going to: **Agency Settings → Data storage and management → Global data storage**



## Vehicle Comparison [VVM-59207]

The new **Vehicle Comparison** feature allows you to use a suite of image comparison tools to inspect, compare, annotate, and report on vehicle overview images.

- You can access the **Vehicle Comparison** feature from any **Detection Record Detail** window.




The screenshot shows the 'Detection Record Details' window. At the top, there is a header with the title 'Detection Record Details' and a close button. Below the header is a menu with the following options: 'Add Hot plate', 'Edit detection record', 'Output report', and 'Vehicle comparison'. The 'Vehicle comparison' option is highlighted with a red border. Below the menu is a table of details for the detection record.

Camera name	Main St Camera
Plate & state	EW593HT, IL
Date & time	01/31/2023 15:31:04 CST
Estimate address	123 W Main St, Chicago, IL
Agency	Agency name
Make, model	BMW, 3 Series
Vehicle color	Blue
Detection information	▼
Comments (1)	▼

At the bottom of the window, there are three buttons: 'Focus plate', 'Analyze plate', and 'Search plate'.

- Selecting **Vehicle Comparison** for a detection allows you to upload a **Probe Vehicle** image for comparison.

### Probe vehicle info



Agency  
Agency ABC

User  
Raymond Holt

Date created  
08/05/25 22:34

Case/Report number

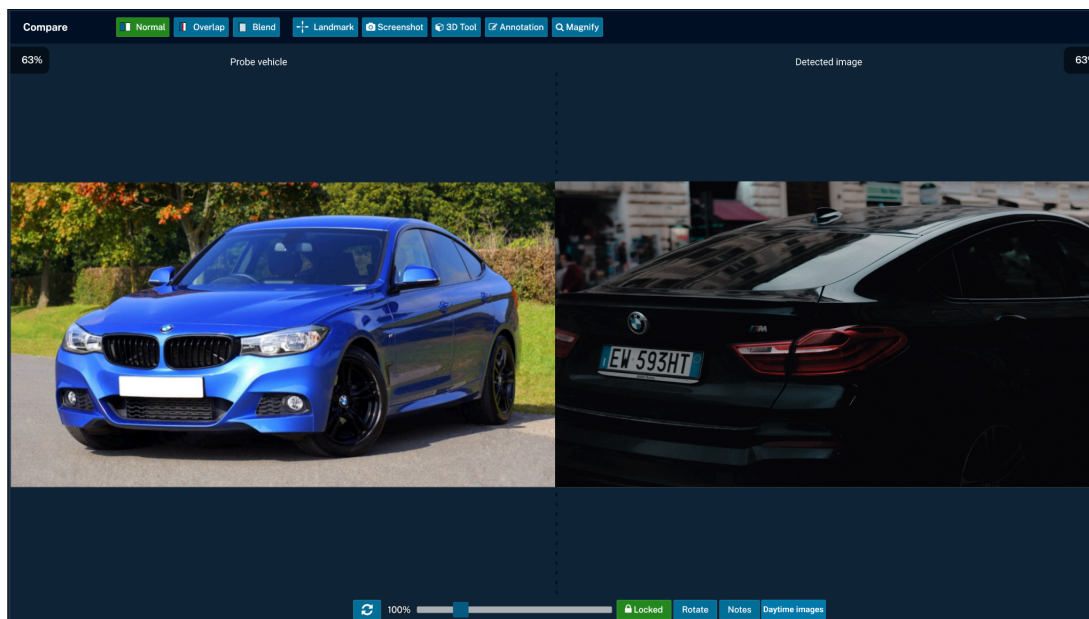
Crime

Victim/Complainant

Date and time of incident  
📅 08/05/24 00:00

Cancel
Upload

- The **Compare** window contains tools for closely comparing the content of two images, such as **Zoom**, **Overlap**, **Blend**, and **3D Tools**. You can then use **Landmark**, **Annotation**, and **Notes** to annotate each image and highlight similar or differing attributes.



- Create a **Vehicle Comparison Report** to catalog and disseminate your image comparison findings.

 **VehicleManager**

**Vehicle Comparison Report**

License plate number: ABC123

**Comparison**



Know vehicle



Probe vehicle

**Annotations**



**Notes**

I am investigating a burglary

**Description**

Same wheel  
Same window

# Improvements

VehicleManager has been updated to include the following improvements and fixes:

- Accounts that utilize Unified Identification (UID) for Single Sign On (SSO) no longer need to log on twice in a row. [VVM-60306]
- Fixed an issue that would cause **Output Reports** created in **Data Sharing (Internal Server)** to omit the list of Agencies with which detections are shared. [VVM-60262]
- Fixed an issue with **Output Reports** in **System Management** that could cause incongruities between the information displayed in the **Systems and Cameras List** and the reports. [VVM-60253]
- The agency lists in **Data Sharing (Internal Server)** now support searching for the Forced (F) prefix that indicates an Agency has the **Enable Data Sharing Auditing** option enabled. [VVM-59801]
- Fixed an issue in **VM Assist** that would cause polygons created in the map to be un-deletable. [VVM-59586]
- Fixed an issue that would cause **Camera Online** alerts to fail for duplicated cameras. [VVM-59418]
- Data views in the **Dashboard** will now default to displaying time periods in terms of **Hours** when less than 30 days of data is present. [VVM-59203]
- The timeout protection limits placed on the input of Wildcard characters have been removed. [VVM-59059, VVM-60193]
- Scrolling behavior for the Agency lists in **Data Sharing (Internal Server)** has been improved for large numbers of list items. [VVM-57558]
- The Data Sharing agreement sent to Agencies participating in data sharing has been updated to include contact information for the initiating account, and to trigger auditing record creation. [VVM-57312, VVM-60268]
- Fixed an issue causing duplicate cameras and systems to be displayed in **System Management** and **Output Reports**. [VVM-60383]
- Search results are now more consistent between VehicleSearch and VM Assist. [VVM-60367]
- VehicleSearch now supports **Vehicle Year** and **VIN** in **More Filters**. [VVM-60324]
- Fixed an issue that could cause data returned by VehicleSearch to include time periods broader than what was specified. [VVM-60269]
- The accuracy of the displayed timezone in search results has been improved. [VVM-53680]

- Various security improvements have been implemented.[VVM-59855, VVM-59401, VVM-59400, VVM-60398]