



MOTOROLA
SOLUTIONS

Fixed license plate recognition

A visual guide

With new solutions entering the market for fixed and quick-deploy license plate recognition, here's some guidance to help you better understand how they work.



L6Q

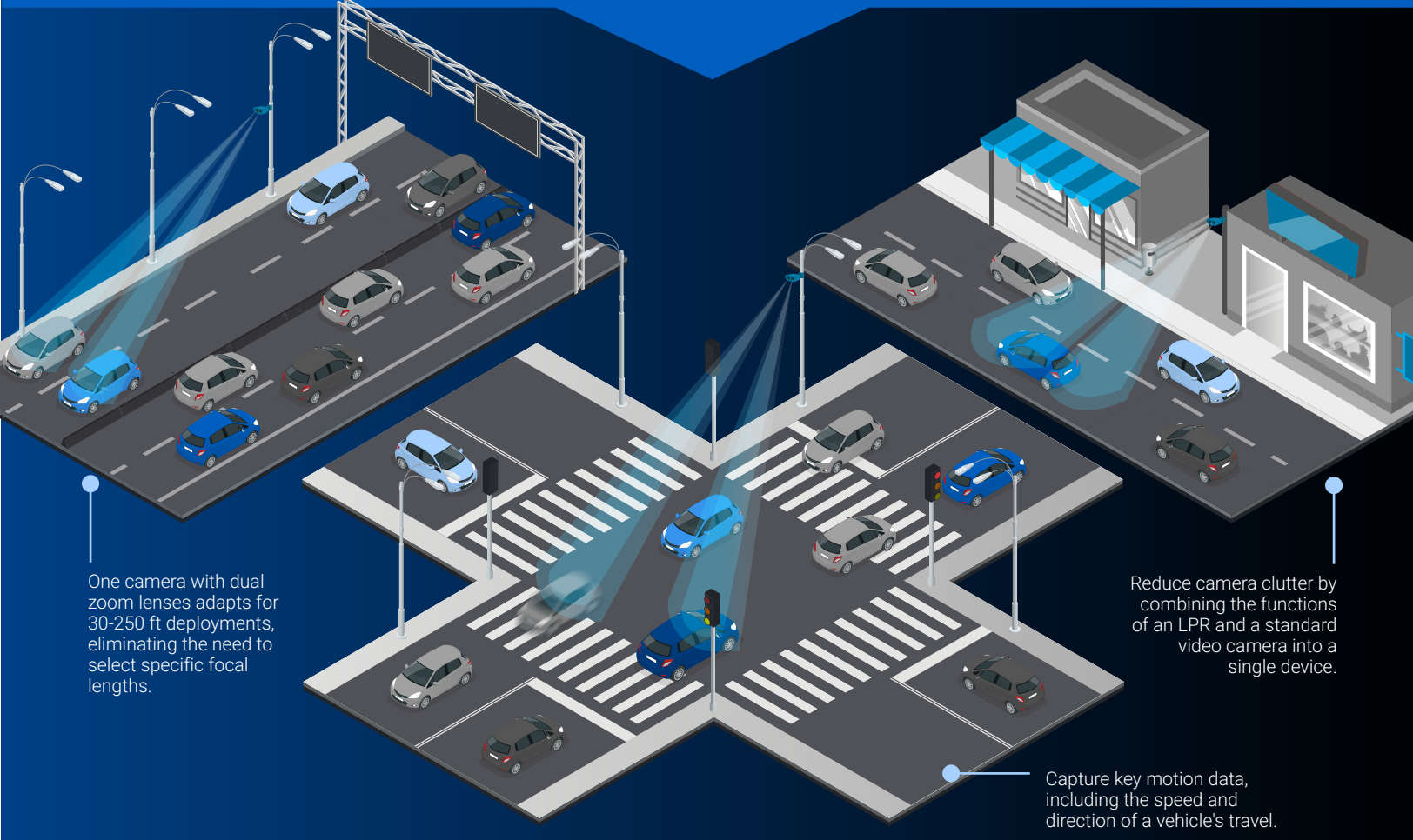
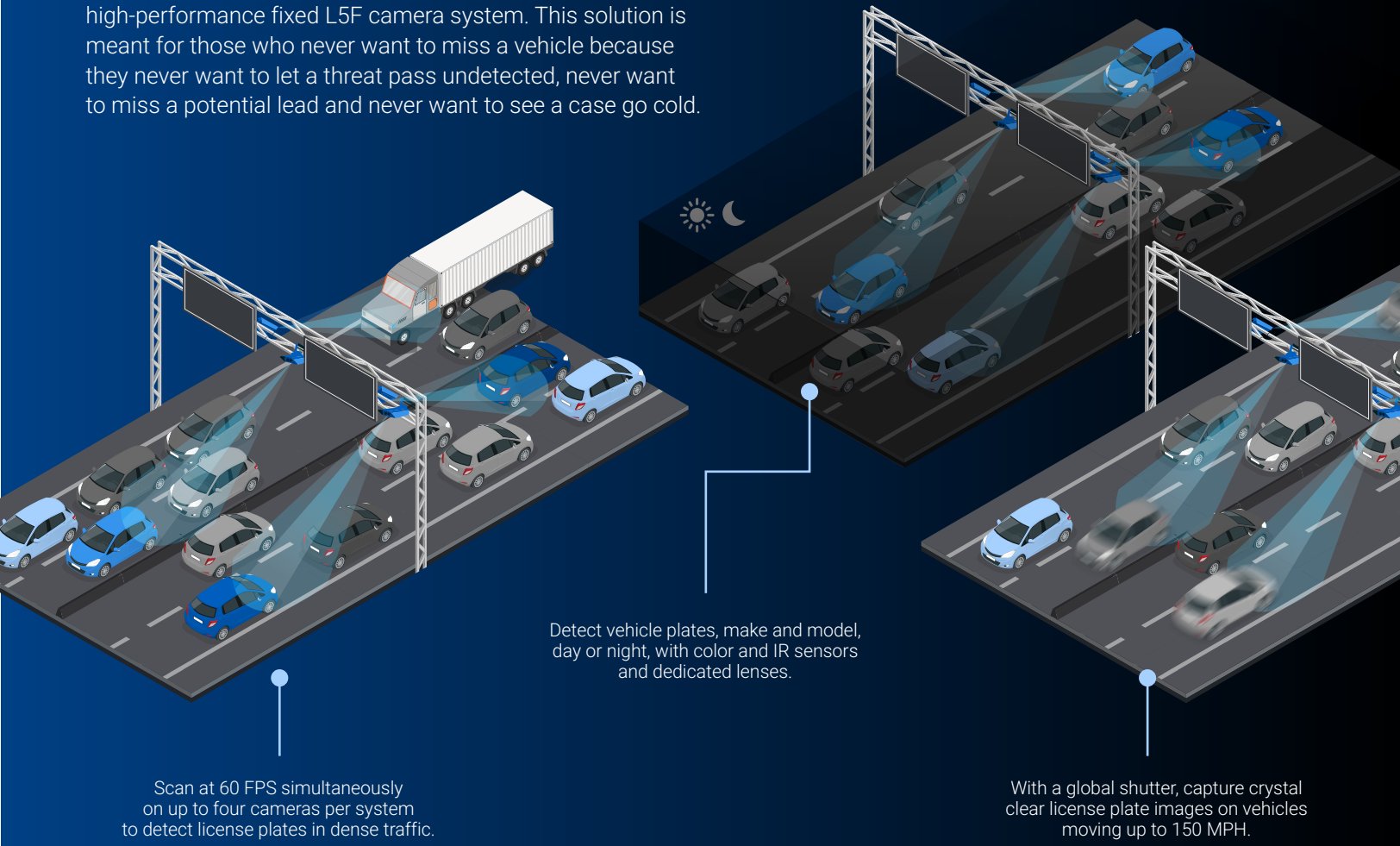
Quick-deploy LPR camera system

Collect targeted, tactical LPR data to aid an investigation, improve safety for an event or fill gaps in your LPR network with our quick-deploy L6Q camera system. This solar, AC or battery-powered camera can be installed and activated in minutes anywhere with cellular coverage to capture LPR data.

L5F

Fixed LPR camera system

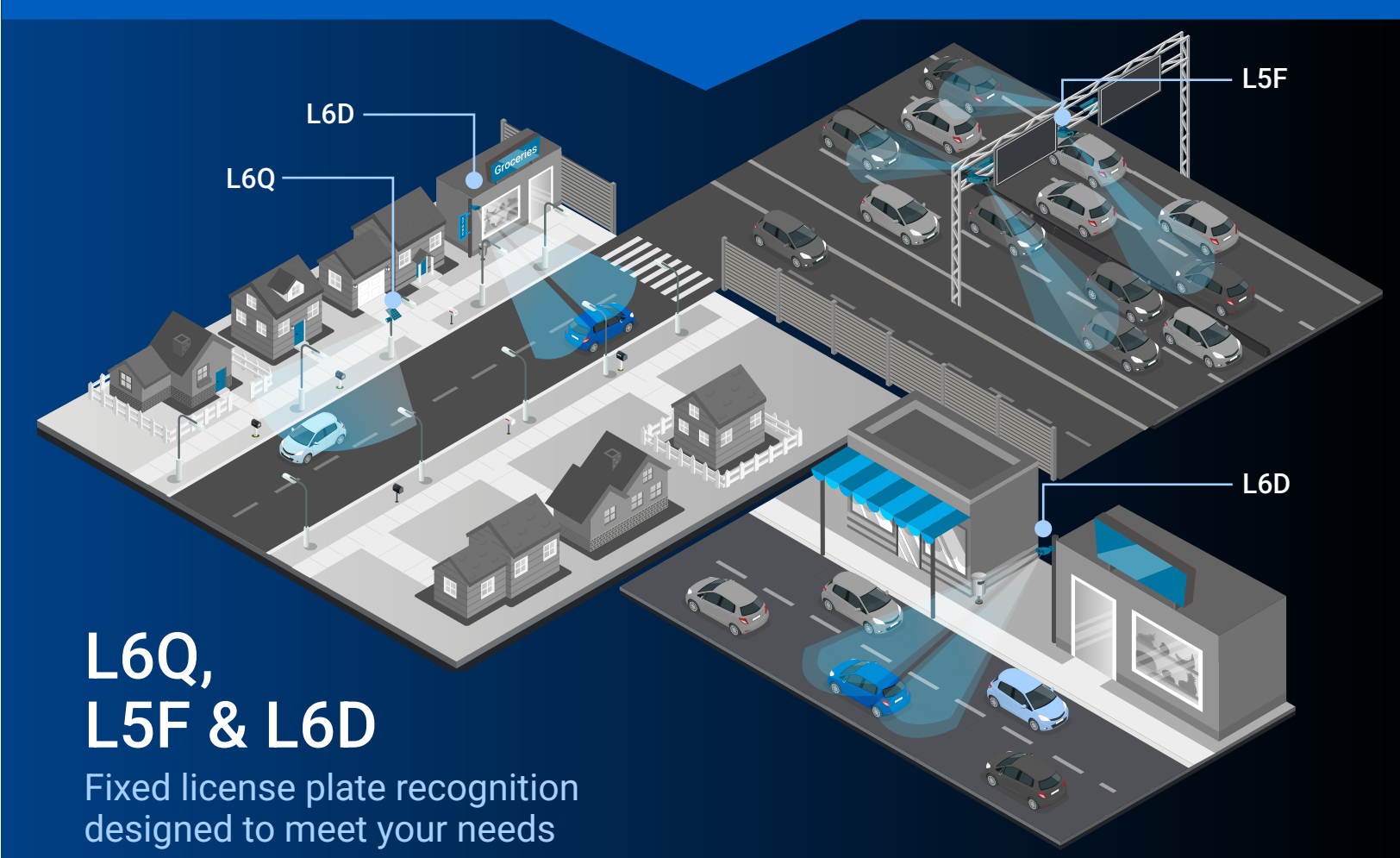
Scan more vehicles and capture more data with our high-performance fixed L5F camera system. This solution is meant for those who never want to miss a vehicle because they never want to let a threat pass undetected, never want to miss a potential lead and never want to see a case go cold.



L6D

Dual-purpose LPR camera

Enhance public safety and operational efficiency with the L6D camera. This single, powerful solution delivers both accurate, multi-lane LPR data and high quality color security video. By combining these critical capabilities into one easy-to-deploy camera, the L6D provides the complete picture needed to understand incidents and accelerate investigations.



L6Q, L5F & L6D

Fixed license plate recognition designed to meet your needs

Having choices like the L6Q, L6F and L6D allows you to build a license plate recognition program that can be tailored to your needs. Our portfolio provides the flexibility to expand your network as desired with extensive mobile, fixed, trailer, Android/iOS app and video-based LPR options that all utilize our widely deployed, tested and proven LPR algorithm.



To learn more, visit
motorolasolutions.com/lpr

Motorola Solutions, Inc. 500 West Monroe Street, Chicago, IL 60661 U.S.A. motorolasolutions.com

MOTOROLA, MOTO, MOTOROLA SOLUTIONS and the Stylized M Logo are trademarks or registered trademarks of Motorola Trademark Holdings, LLC and are used under license. All other trademarks are the property of their respective owners. ©2025 Motorola Solutions, Inc. All rights reserved. 08-2025 [LD04]