



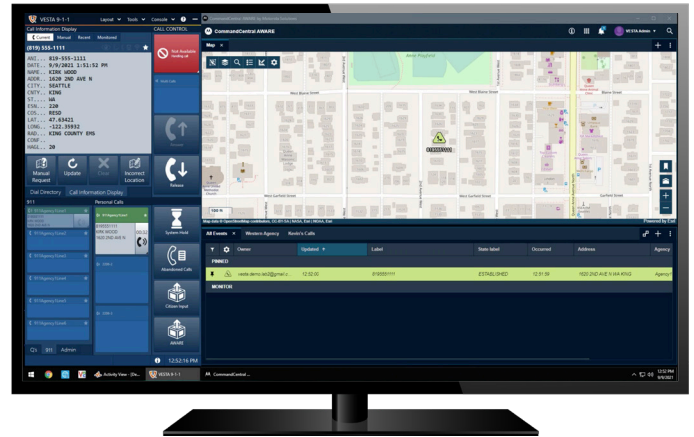
COMMANDCENTRAL AWARE FOR 9-1-1

THE VISUAL GATEWAY TO LOCATION AND MAPPING INTELLIGENCE ON ONE MAP

What if we could reduce stress on the telecommunicator by improving the location and mapping intelligence for a faster, more accurate response to the 9-1-1 caller and first responder? And what if this could all be done on one map? Look no further. It is here today.

We are proud to bring you CommandCentral Aware for 9-1-1, (Aware for 9-1-1), the integration of two mature and trusted products, VESTA® 9-1-1 call handling and CommandCentral Aware. The combination offers not only an accurate location of the caller, but a visual gateway into the incident that automatically gathers the critical data to strengthen every response.

VESTA 9-1-1 is the industry leader in call handling, used in over 3,000 PSAPs in the U.S. CommandCentral Aware is the proven cloud-based mapping and situational awareness solution, providing real-time information, to help prepare first responders for whatever situation they face.



Aware for 9-1-1 makes the telecommunicator's job easier, offering the opportunity to navigate from complexity to simplicity.

SEE THE INCIDENT AS IT UNFOLDS

“9-1-1, what’s the location of your emergency?”

The call comes in on VESTA 9-1-1. It automatically plots, centers, zooms on the CommandCentral Aware map. The Class of Service icon, RapidSOS location and uncertainty radius display instantly. With Motorola Solutions CAD, Aware for 9-1-1 displays nearby incidents and units responding. Checking the weather service affirms the potential damaging conditions. The incident is at the edge of the PSAP’s jurisdiction, and access to the borderless basemap shows relevant information outside of the PSAP’s boundaries. Access to the live traffic feed shows that traffic is already backing up at the intersection of the accident. The telecommunicator is able to share this detail with first responders as they head to the scene.

CommandCentral Aware for 9-1-1 unifies multiple sources of data displayed on the CommandCentral Aware map, as the event unfolds.

COMMANDCENTRAL AWARE FOR 9-1-1



CONNECT

Aware for 9-1-1 delivers data, beyond location, to the telecommunicator, enhancing the ability to quickly and accurately assess and respond to the incident for greater situational intelligence and collaboration.

SIMPLIFY

Information overload is a second-by-second problem for the telecommunicator. Aware for 9-1-1 reduces the complexity by bringing the relevant data to the forefront, using the CommandCentral Aware Rules Engine, eliminating manual operations and speeding response.

EMPOWER

The power to see the event, including the caller’s location, weather, real-time traffic feeds, the CAD event including units nearby - all from one map - gives the telecommunicator the ability to turn data into knowledge and better respond to the caller and first responders.

KEY BENEFITS AND FEATURES

Aware for 9-1-1 is a cloud-based subscription service meaning you gain predictable pricing, a secure and scalable infrastructure and the ability to offload deployment complexity. There is no need to maintain, troubleshoot or monitor because safeguards for downtime and system continuity are built in.

9-1-1 Call Handling Functionality

Plot, center and zoom 9-1-1 calls and call updates on the CommandCentral Aware map. Display Class of Service icons and uncertainty radius.

Enhanced Location Data

Display enhanced location data, including RapidSOS to rapidly pinpoint the caller's location. The CommandCentral Aware map integrates with Motorola Solutions CAD to display incident location details and response units in real-time.

Esri Integration

Esri's ArcGIS API for JavaScript. Connect to Esri's REST services; Esri's ArcGIS Online services; other cloud web map services.

Real-time Feeds & Online Resources

Connect to Accuweather; Traffic; Stream Gauges; Esri's Living Atlas; Traffic cams; and Google Street View.

Cybersecurity

Security is built in to reduce risk of cyber attacks.

Rules Engine

Allows 9-1-1 command staff and telecommunicators to pre-define if/then scenarios based on an incident/event that triggers map actions, saving clicks and time.

Borderless Basemaps

Embedded Esri ArcGIS Online basemaps provide borderless basemaps for the entire world. Even if a call comes in from outside a jurisdiction, there will always be a map reference.

BETTER OUTCOMES FOR YOUR PSAP

The benefits of CommandCentral Aware extend beyond the telecommunicator. As your need for device and event mapping increases, the CommandCentral Aware map will grow with you, expanding the view to include radio device locations, alarm sensor notifications, 3rd party integrations, plus live-streaming fixed and mobile video, providing unified situational awareness with infinite integration and collaboration across your agency.

As a subscription service, you can easily add new functionality on your terms, when you need it.

MAKE THE TELECOMMUNICATOR'S JOB EASIER

The ability to assess and respond effectively to an incident, is all about gathering data to make faster, more accurate decisions. Telecommunicators tell us that locating the 9-1-1 caller is one of the most difficult aspects of their job. Plus, locating the caller often involves access to more details, beyond location.

Aware for 9-1-1 solves this problem by giving the telecommunicator a visual depiction of the situation as it unfolds increasing their understanding of the event and how to respond.

Help make the telecommunicator's job easier. Equip them with better intelligence to protect citizens and first responders.

Learn how you can put Aware for 9-1-1 to work for your PSAP. Save seconds with one map.

www.motorolasolutions.com/ng911



Motorola Solutions, Inc. 500 West Monroe Street, Chicago, IL 60661 U.S.A. motorolasolutions.com

MOTOROLA, MOTO, MOTOROLA SOLUTIONS and the Stylized M Logo are trademarks or registered trademarks of Motorola Trademark Holdings, LLC and are used under license. All other trademarks are the property of their respective owners. © 2021 Motorola Solutions, Inc. All rights reserved. 09-2021 [MW09]