

V300 USER INTERFACE GUIDE

POWERING ON

To turn on the V300 press the power button, on the bottom of the camera.



The new home screen will display battery level, memory level and recording in progress.



POWERING OFF

To turn off the V300 press the power button. It will ask you to confirm, then you press it again to shut down the camera.



MAIN MENU

Press the top (Function) button twice to enter the Main menu



To scroll through selections, press the side button. To select, press the top button.



1. Tag Last Event



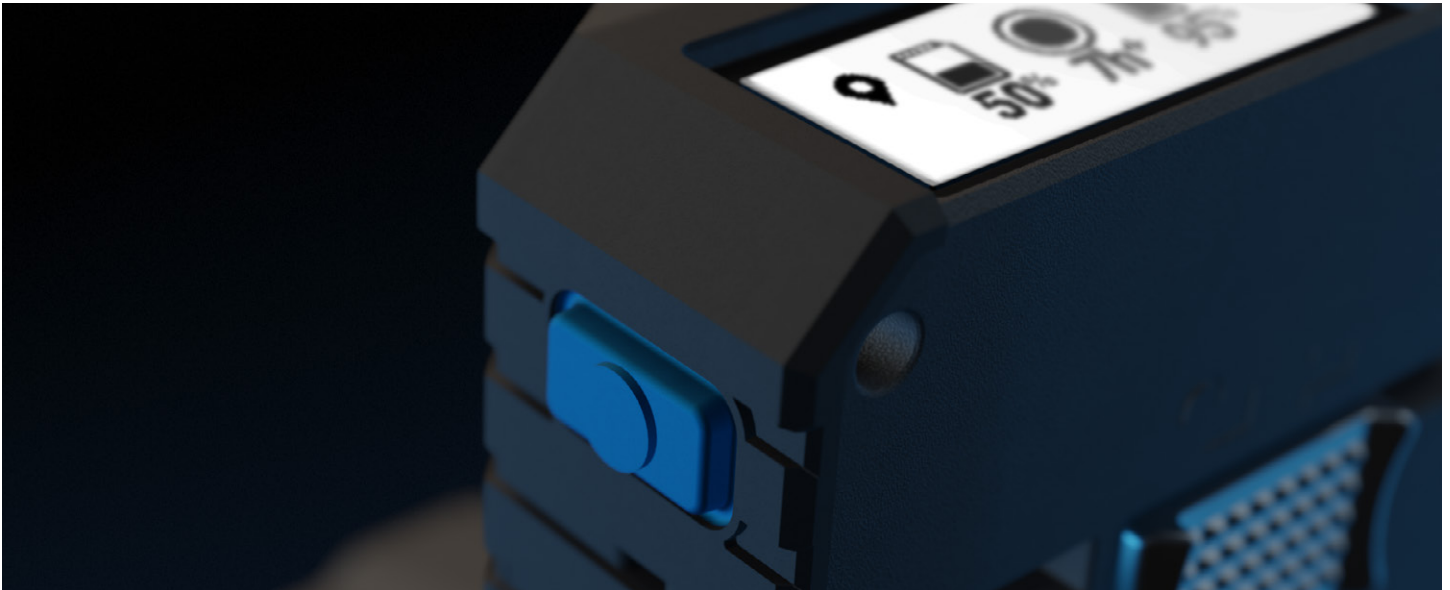
2. Sensor Safety Mode



3. Device Info

INFO SEQUENCE MENU

Press the side button twice to enter the Info Sequence menu



To scroll through selections, press the side button. To select, press the top button.



1. Storage information and number of events



2. Recording Mode ("Group" if associated to a recording group or "None" if not associated with a recording group)



3. Connections to peripherals (SmartControl app, Vehicle WiFi base, APX radio, Holster Sensor). Icons only show when the camera is actively connected to a peripheral.



4. Holster Sensor battery screen



5. Bluetooth connectivity



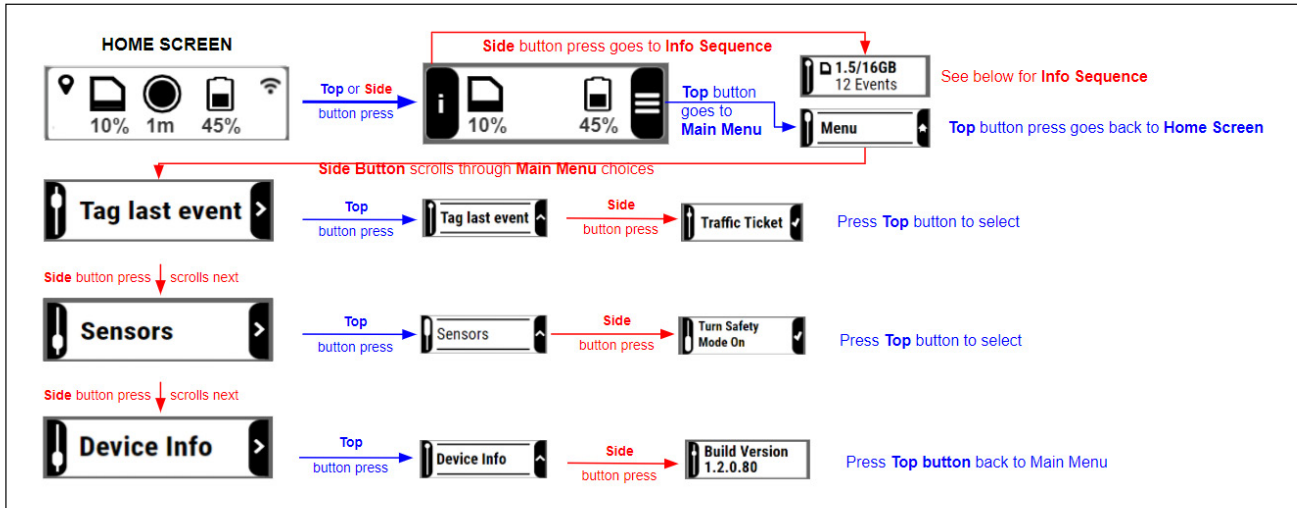
6. Device name



7. Officer name

MAIN MENU NAVIGATION

Enter by pressing the top (function) button.



INFO SEQUENCE MENU

Enter by pressing the side (function) button.

