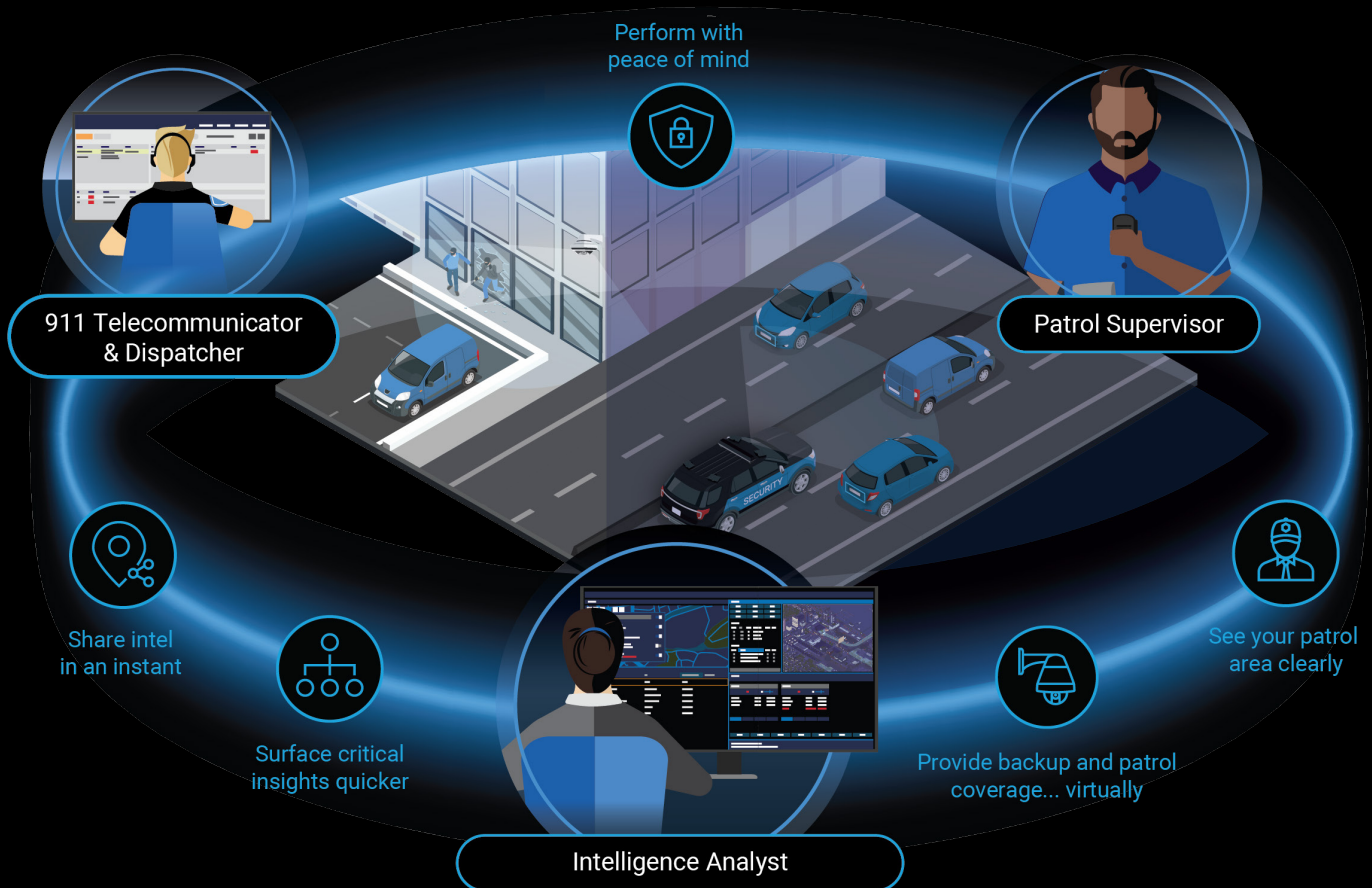


Brochure



# CommandCentral Aware

All in one. Awareness for all.



# All in one. Awareness for all.

CommandCentral Aware unifies all of your real-time data and video streams into a secure common operational view, automates analysis to surface critical insights and enables instant communication of intelligence to responders in the field.



**200+**  
Organizations

Serves over 200 public safety agencies use CommandCentral Aware



**33,000+**  
Users

More than 33,000 users of CommandCentral Aware situational awareness software



**100,000+**  
Cloud-Connected  
Cameras

Over 100,000 cloud-connected cameras streaming video to CommandCentral Aware



**70+**  
Integration  
Partners

Over 70 telemetry and video integration partners in addition to existing Motorola Solutions integrations





# See your patrol area clearly

Whether it's responding to an emergency or managing day-to-day operations, visibility is everything.

CommandCentral Aware allows you to see all of your resources and events on a single, highly configurable map. With emergency calls, CAD incidents, radio and vehicle locations, sensors, cameras and more all together, you'll uncover new insights that inform better decisions.

### Unified resource & incident mapping

Bring together event and device locations on an Esri-based map. Layer traffic, boundaries, landmarks, buildings and floor plans for enriched spatial orientation.

### Custom map & floor plan integration

Enhance your view with the addition of indoor floor plans. Go a step further and add almost any GIS dataset from ArcGIS as an available map layer.

### Configurable event monitor & free-text search

Alongside the map, view events and device alerts in a table structure. Add, remove and sort data columns for individual user preferences. Quickly access active resources or events on the map using a free-text search bar.

### Mobile compatible user experience

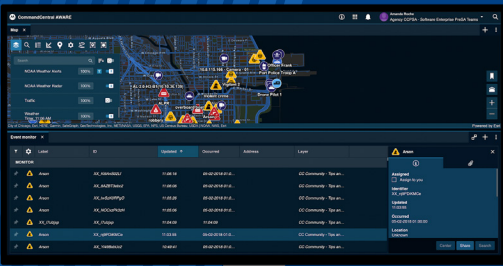
Access the map and event monitor from any Android or iOS tablet or smartphone to extend operational visibility to anywhere you have an internet connection.

### Adjustable resource reporting & breadcrumb-style tracking

Visualize the travel paths of devices, including radios, for up to 30 minutes. Device location is reported every three minutes but can be reconfigured to meet your needs and temporarily overridden to a faster cadence during emergencies.

### Drag-and-drop modular user interface with custom filtering

Configure the CommandCentral Aware display across one, two, or three screens and personalize to meet individual role needs and workflow preferences. Create and save various views of a user's map and monitor using filters based on type of event, device, geofence and other custom criteria.



# 40% reduction

in violent crime by Detroit PD after implementing CommandCentral Aware





# Provide backup and patrol coverage... virtually

The presence of a video camera is almost a given these days – anywhere you are. The challenge is accessing them when needed.

CommandCentral Aware enables you to connect, view and control real-time camera feeds from disparate video sources, organized the way you want, to provide additional eyes and ears on scene.

## Source-agnostic video streaming

Unify access to all of your video sources by directly integrating with video management systems, as well as body, in-car and license plate recognition (LPR) and third party IP cameras.

## Integrated video analytic alerts

Video analytic alerts from a compatible video management system (VMS) can be ingested as events, just like a CAD incident, to improve threat detection and response.

## Native pan-tilt-zoom camera control

Natively access pan, tilt, and zoom (PTZ) controls from compatible cameras and video management systems directly from within CommandCentral Aware.

## Video viewing & feature permissions

Apply user permissions by cameras or camera groups to control who can view video streams, review historical footage, clip, snapshot and export.

## Video streaming connectors

Connect to and livestream from video systems using our easy-to-deploy Safety Hub or by simply entering a camera IP or RTSP address.

## Custom camera association, groups & labeling

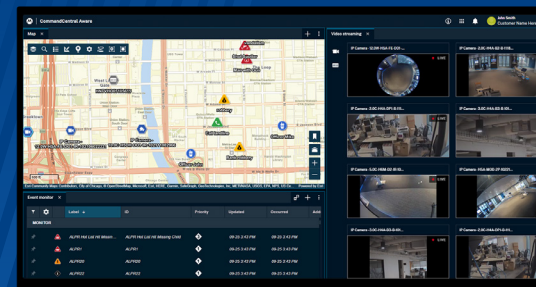
View camera locations and open feeds from the map. During an incident, quickly identify nearby cameras and simultaneously open all with one click. Group cameras from across systems to quickly open all livestreams available in a specific location.

## Rewind, bookmark, clip & snapshot

Rewind camera feeds to replay an incident or a response. Bookmark critical moments and clip or snapshot video footage to share it with responders or save as evidence.

“ Having the technology is like having a third person in each patrol car.

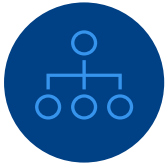
– Chief James White  
Detroit Police Department



A major city manages as many as 32,000 video feeds\*

\*2022 comparitech study





# Surface critical insights quicker

Having more data can lead to sensory overload and missing what's actually important.

CommandCentral Aware reduces this burden with a workflow automation rules engine that can be configured for your specific needs. With attention focused, users can assign themselves to an event and search or query external databases for critical information to support an effective response.

## Workflow automation rules engine

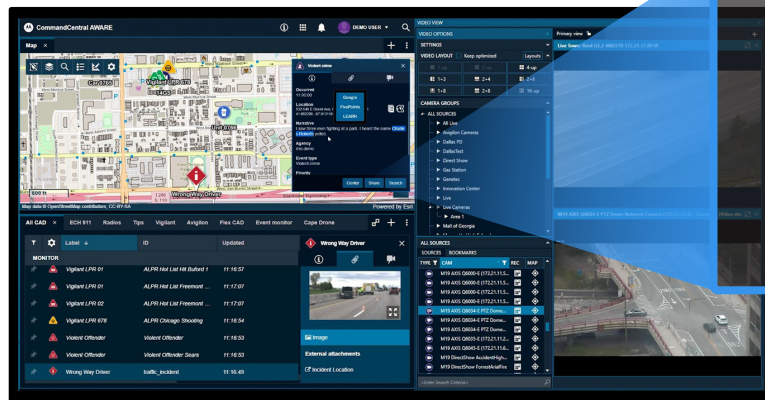
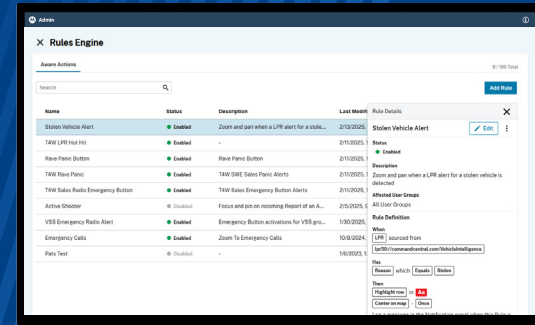
Create if-this-then-that rules with "AND" and "OR" operators to automate actions and eliminate manual information analysis and processing.

## Area checkpoint creation & alerts

Create area and unit specific, time-based checkpoints that verify an area has been secured including entry and exit alerts as well as notifications for incompleteness.

## Integrated search & database query

Initiate a search or query across various sources on any highlighted text to gather more context on a situation and better inform a response.



Extract deeper insights for maximum operational impact

- Search Engine
- LPR Query

## Historical incident recreation & replay

Review responses through the lens of mapped historical events, resources and video. Replay the incident as it unfolded to expedite investigations and inform future workflows.





# Share intel in an instant

Disparate systems limit your team's ability to collaborate and communicate data across the entire workflow.

With CommandCentral Aware, share location-based information across the entire agency workflow and communicate vital intel to the field. You can even share customized map layers with the team for improved efficiency and collaboration.

## Native Radio Communications

Interface directly to our MCC 7500E radio console for communication control access to interact with talkgroups and monitor device statuses.

## Embedded email communications

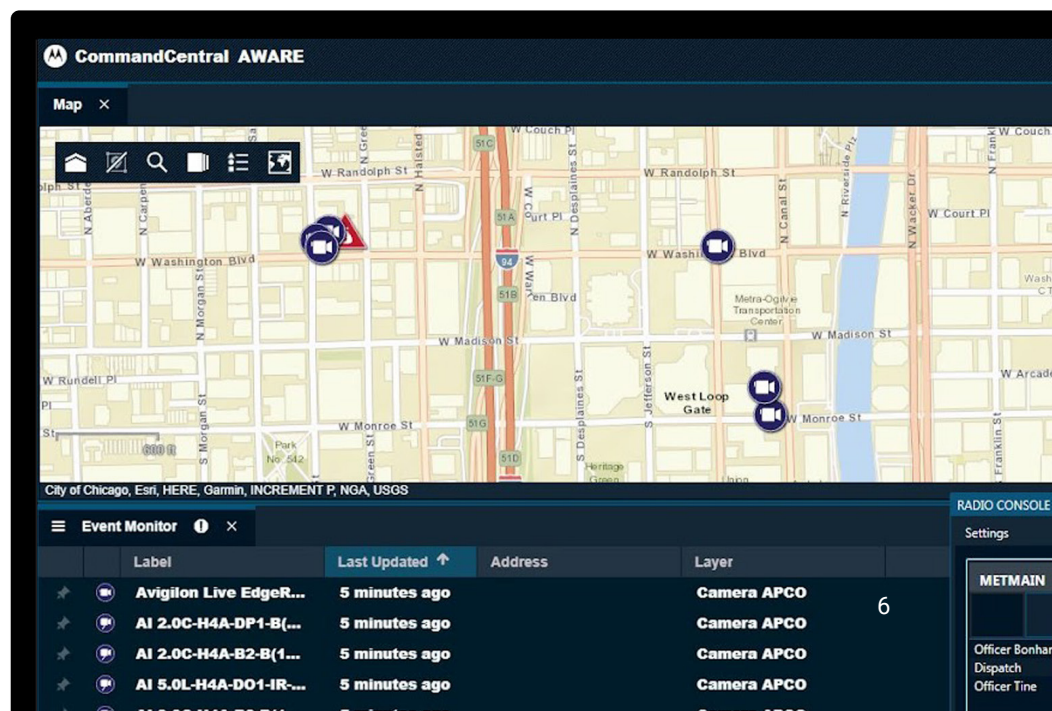
Share richer situational intelligence including video clips, snapshots and more comprehensive incident updates via email sent from within CommandCentral Aware.

## Collaboration & drawing tools

Draw polygons, polylines and points on the map with coloring, icons and annotations. Drawings are visible by all users as a map layer to improve coordination.

45%  
reduction

in crime by City of Springfield,  
MA after implementing  
CommandCentral Aware





## Perform with peace of mind

**Don't sacrifice peace of mind. Have confidence in your security.**

CommandCentral Aware is a cloud-native solution that conforms to many of the highest security standards. It is also routinely and automatically updated to help you stay protected.

### **Proactive security design**

Security is proactively incorporated into the design of our applications, not applied reactively when incidents occur. Applications undergo security reviews at each phase of their development.

### **Automatic, routine security updates**

CommandCentral Aware underwent security reviews at each phase of development, but is continually assessed for vulnerabilities and updated with patches automatically.

### **Expert knowledge on your team**

Over 350 specially trained and certified Cybersecurity Champions ensure that a culture of cybersecurity is instilled into the fabric of our product and services teams. Programmers receive ongoing security training and updates on the latest hacker tactics so they can layer security into every stage of the application development process.



# The power of the safety and security ecosystem

Whether it's addressing security concerns, assisting customers or managing everyday operations, a connected portfolio of command center software keeps everyone on the same page, fostering a culture of transparency and ultimately contributing to a more secure and productive environment.

At Motorola Solutions, we build the best possible technologies across every part of the safety and security ecosystem to help protect people, property and places. With our solutions, people can collaborate. Information flows where it's needed. Performance improves. Lives are protected. And safety becomes more than momentary. It becomes the constant that a better world — with safer communities, safer schools, safer hospitals, safer businesses, safer everywhere — is built on. service makes the world safer. United, they are exponentially more powerful. Let's build the future of safety together.



For more information about CommandCentral Aware, please visit:  
[www.motorolasolutions.com/aware](http://www.motorolasolutions.com/aware)



Motorola Solutions, Inc. 500 West Monroe Street, Chicago, IL 60661 U.S.A. [motorolasolutions.com](http://motorolasolutions.com)

Available in Latin America.

MOTOROLA, MOTO, MOTOROLA SOLUTIONS and the Stylized M Logo are trademarks or registered trademarks of Motorola Trademark Holdings, LLC and are used under license. All other trademarks are the property of their respective owners. ©2025 Motorola Solutions, Inc. All rights reserved. 04-2025 [SS11]