



MOTOROLA ASTRO RADIO LOCATION INTEGRATION

SEE THE EXACT LOCATION OF FIELD PERSONNEL

RELIABLE PERSONNEL LOCATOR

The Spillman Flex Motorola ASTRO Radio Location Integration offers reliable officer location tracking by showing Global Positioning System (GPS)-enabled subscriber devices in Flex's mapping software. This allows dispatchers and other officers to locate field personnel, even if a responder has to leave the vehicle. The Flex CAD and Mobile Automatic Vehicle Locator (AVL) maps display not only the current location, speed, and heading of the radio, but also the time since the radio moved locations. A grey box will appear around the device icon to show others that a user has not checked in for a set amount of time.

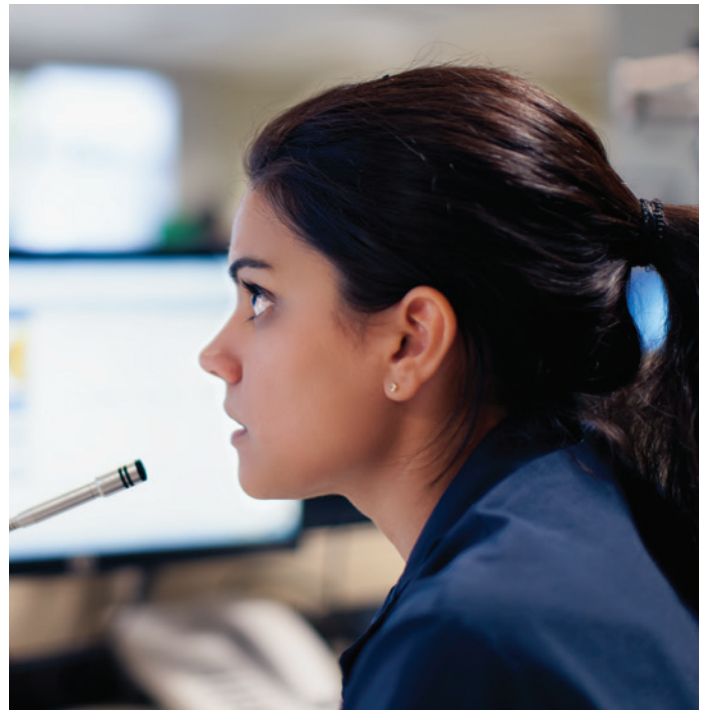
Agencies must have both ASTRO Radio Location Integration and the AVL Mapping module to communicate with subscriber devices. Only devices on the ASTRO system are supported with this integration.

EFFICIENT STATUS CHANGE ALERTS

With the ASTRO Radio Location Integration, first responders can request assistance or backup by using the emergency button on GPS-equipped Motorola radios. When a first responder presses the emergency button, all CAD and Mobile AVL maps zoom to that device, which will flash in a red, alerted status. The integration also provides field personnel with up-to-date information on the location of other available field personnel.

NEW DEVICE INTEGRATION

Personnel can easily add new radios without worrying about setup time. As new devices are added to an agency's Motorola ASTRO system, they will be automatically added to the Flex AVL system and will appear on the CAD map.



FLEX



1. Dispatchers can track first responders' radios, even when they leave their vehicles.
2. When field personnel press the emergency button on their radios, a visual alert appears in Flex CAD, notifying dispatchers that assistance is needed.
3. Personnel in need of assistance appear in a red flashing, alerted status on all CAD and Mobile AVL maps.

