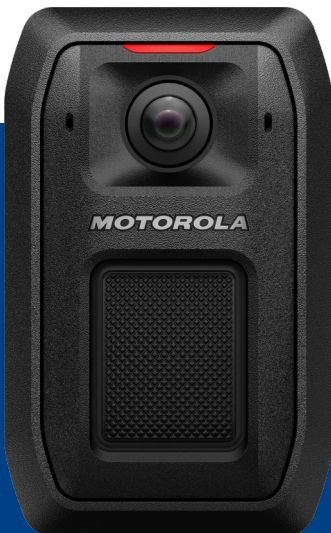


Livestream body-worn video

CommandCentral Aware for streaming video: V700 body camera video integration

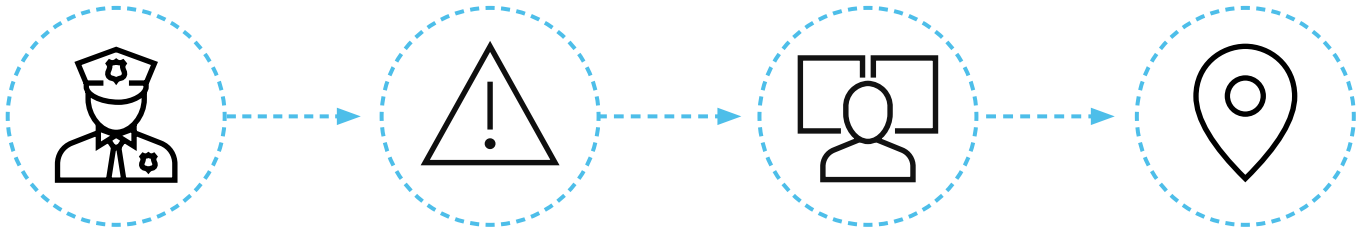
With high risk incidents on the rise, responders need real-time situational awareness to support better decision making and safety in the field. They need eyes on the scene throughout the incident to improve awareness of an officer's location and offer closer remote visibility and support.



Access real-time body-worn camera video device locations plus live streaming to put eyes on the scene of the incident from anywhere. The V700 body camera can now be livestreamed to CommandCentral Aware. This integration offers remote visibility for more precise decision-making, protecting responders and the public.

See it in action

In this scenario, see how streaming body-worn video and location into CommandCentral Aware offers additional backup support and supervision in real-time versus reviewing body-worn video feeds post-incident. Knowing what is happening on the scene results in a safer response for all.



Activation

The officer is in route to a domestic dispute and turns on the M500 in-car camera which triggers the V700 body camera to record.

Awareness

The officer is let in by the victim who has called 911. As the officer comes into the house the abuser attacks them. The officer presses the emergency button on the radio since they are busy defending themselves.

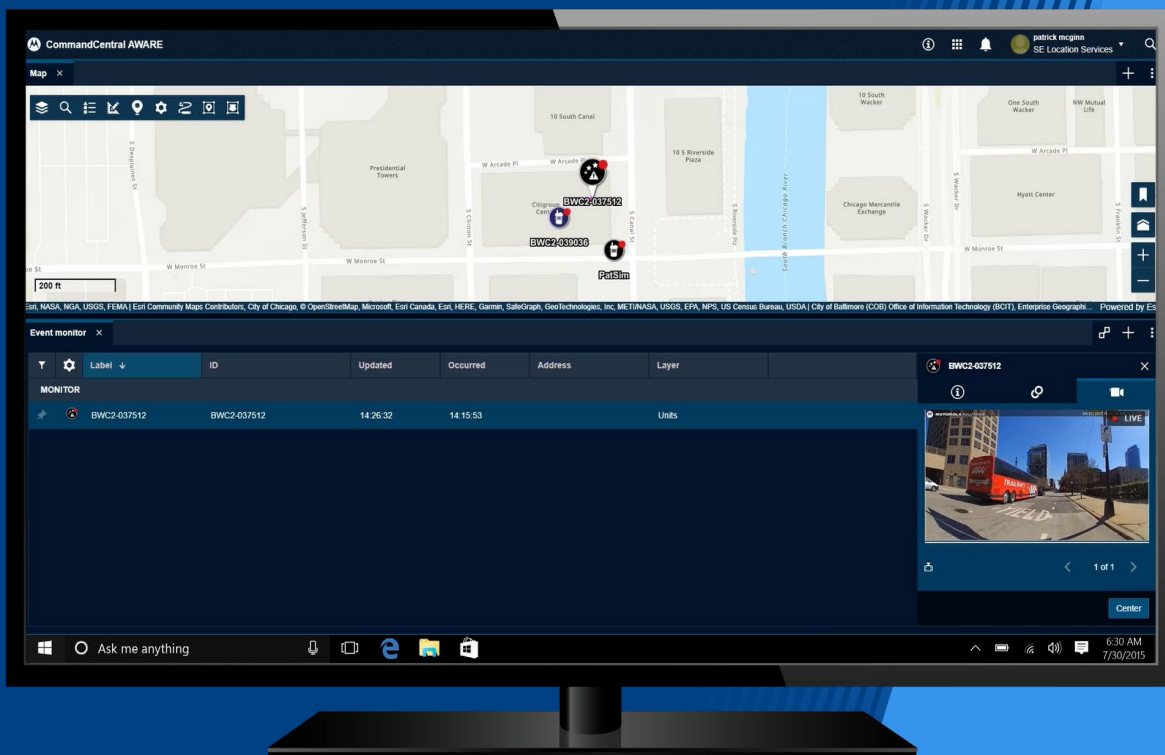
Remote visibility

The dispatcher sees the alert on the CommandCentral Aware map. The dispatcher livestreams the V700 to view what is happening on the scene. The dispatcher sees the officer is struggling with the suspect.

Remote support

The dispatcher calls for the nearest backup unit that he sees on the CommandCentral Aware map. Once the back up arrives the arrest is made.





Key benefits

Improve awareness of officer's locations

- View real-time body-worn camera location and video.
- Receive body-worn camera recording activation alerts on the CommandCentral Aware map.
- Enhance the map view and make decisions with added context including custom GIS map layers and traffic, and map controls such as zones of interest, search and measurement tools.

Officer closer remote visibility and support

- View different areas of the scene that the in-car camera is unable to view.
- Gain a complete view of the scene from the agency or command center to inform responders of changes on the scene.
- Provide transparency into the incident response.

Align with agency policies

- For a police officer's privacy the body-worn camera cannot be livestreaming if it is not recording.
- When the body-worn camera is streaming, an "eye" icon shows on the home screen on the body-worn camera letting the officer know that video and audio are streaming.
- The body-worn camera can only display location when it is turned on.



CommandCentral Aware

Remotely view incidents as they unfold to inform the response on the ground. Bring critical data into a single view with real-time mapping of radios, incidents, alerts, and license plate recognition (LPR) detections alongside streaming in-car and fixed video. Tailor CommandCentral Aware for your agency's needs and maximize your mobile video, radio, fixed video investments.

For more information:

www.motorolasolutions.com/aware



V700 body camera

Description: The V700 is a state-of-the-art LTE body camera that captures critical incidents and keeps you connected throughout your shift.

For more information:

www.motorolasolutions.com/V700

For a demonstration or to purchase,
contact your sales representative.



Motorola Solutions, Inc. 500 West Monroe Street, Chicago, IL 60661 U.S.A. motorolasolutions.com

MOTOROLA, MOTO, MOTOROLA SOLUTIONS and the Stylized M Logo are trademarks or registered trademarks of Motorola Trademark Holdings, LLC and are used under license. All other trademarks are the property of their respective owners. ©2024 Motorola Solutions, Inc. All rights reserved. 11-2024 [BG08]