



Fact sheet

Every location status. All in one place.

CommandCentral Aware +
APX radio integration

Challenge

“What’s your status?”

Your APX radio is everywhere you are. But communicating location or updating your status takes time away from focusing on what matters: protecting yourself and your community.

Benefits

Receive critical alerts in your command center

Generate real-time alerts based on the status of any APX radio. Alerts can be triggered when the radio registers “person down” status at an angle with no movement, when the emergency button is pressed on the radio or when a vehicle equipped with APX radios experiences significant impact. **APX radio status alerts* include:**

- Person Down
- Vehicle Impact
- Emergency Button Press

*Status alerts are device dependent. Speak with your Motorola Solutions representative to see which status alerts are available based on your APX radios.

Solution

APX radios send critical alerts to your command center or RTCC via CommandCentral Aware, which plots them on an Esri-based map with the coordinates and type of incident alongside 9-1-1 calls, CAD incidents, vehicles and other alerts. Activate nearby live video for a comprehensive view of an unfolding incident. Replay the location of radios as an incident unfolded for investigation, training and future workflow enhancement.

Give your operators a common picture

See APX radio location alongside other devices and events including 9-1-1 calls, CAD incidents, vehicles, cameras, sensors, and other radio systems. Layer traffic, weather, floor plans and other custom GIS map layers for improved situational awareness.

Conduct a comprehensive incident review

Review your incident response through a complete lens that includes radio location, mapped alerts and other resource movements as well as video. Replay the incident as it unfolded for investigation, training and future workflow enhancement.



MOTOROLA SOLUTIONS

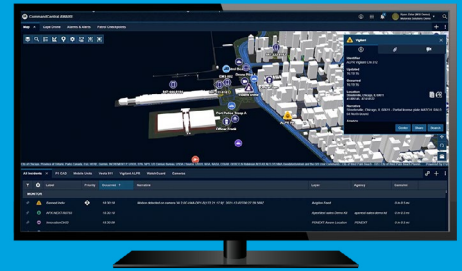
Standard features

- Resource Breadcrumb-Style Tracking
 - Visualize the path of travel for radios for up to 30 minutes. Hover over points on the path for the precise date and time the radio was at that location.
- Configurable Device Reporting
 - Cadence-based radio location reporting can be configured to meet your needs.
- Resource Affiliation & Unit Management
 - Preconfigure units and add associated radios to them to simplify your interface and more easily manage unit location and communications.

Radio-specific features

- SmartLocate routes GPS information over broadband for accuracy, scalability, and speed. SmartLocate delivers high-speed location-tracking over public safety LTE for fast location updates, easy scalability and rapid deployment of APX NEXT and APX N70 radios* in CommandCentral Aware.
- **Fast Updates:** Location updates can be sent more frequently (1 update maximum per 3 seconds). Track first responder locations with improved accuracy, especially during fast-moving situations.
- **Easy Scalability:** Location-tracking is not limited by the capacity or availability of your P25 data channels. An entire fleet of radios can be tracked with no impact to the radio system.
- **Rapid Deployment:** Because no advance provisioning is required, new individuals and teams can be added to the system at a moment's notice.

*Speak with your Motorola Solutions representative for radio availability in your area.



CommandCentral Aware



APX radios

For more information,
scan or click below



CommandCentral Aware



APX radios



Motorola Solutions, Inc. 500 West Monroe Street, Chicago, IL 60661 U.S.A. [motorolasolutions.com](https://www.motorolasolutions.com)

MOTOROLA, MOTO, MOTOROLA SOLUTIONS and the Stylized M Logo are trademarks or registered trademarks of Motorola Trademark Holdings, LLC and are used under license. All other trademarks are the property of their respective owners. ©2025 Motorola Solutions, Inc. All rights reserved. 02-2025 [BG07]