



TWO-WAY RADIO SOLUTIONS



MOTOROLA SOLUTIONS

LAND MOBILE RADIO (LMR) SYSTEMS & DEVICES

RADIO SYSTEMS AND SUSTAINMENT SERVICES

When lives matter and a coordinated response is critical, it's not just about having the right technology. It's about achieving peak performance and reducing risk. You need reliable coverage and connectivity. That's why Motorola Solutions Land Mobile Radio systems are designed for extreme reliability in challenging environments and have been deployed for mission-critical communications on installations across the world. We also provide the expertise to deliver a full range of network and system sustainment services that offload risk, cost and management responsibilities. With our services, you can be assured of optimal system performance and a sharper focus on your mission.

OVER THE AIR REKEYING

Over the Air Rekeying (OTAR) sends encryption key updates to radios over the air, so users don't have to bring their radios in for manual rekeying, saving time and protecting productivity. Solve the logistical problem of maintaining secure wireless communications and eliminate the burden of manually rekeying your radios on a regular basis. Our OTAR application enables key distribution and key management to be conducted securely over-the-air.

OVER THE AIR PROGRAMMING

When your personnel are in the field, updating their radios with a new configuration or making a modification to an existing one can be time-consuming and labour intensive. In fact, locating and reprogramming radios takes them away from their mission and can cost your unit thousands of unproductive man-hours. We listened to these concerns and developed Over The Air Programming (OTAP) that streamlines the process so Motorola two-way radios can be accessed and updated remotely. Now your personnel can enjoy all the advantages of two-way radio communications without lost time or logistical challenges.



APX SERIES P25 TWO-WAY RADIOS

SRX 2200

In theatre, don't let your command be muddled by yelling or unreliable intra-squad radios. Lightweight, secure, rugged, noise cancelling – the SRX 2200 is purpose-built for smarter, safer missions wherever your team operates.

The single-band SRX 2200 delivers legendary APX ruggedness and reliability without compromising on the form factor or features required for routine missions and the most dangerous adversaries. These life-saving radios provide greater coverage, improve voice communications within squads and maintain the overall safety of military personnel.



SRX 2200

APX 8000H

Start with ultra-loud speakers and noise cancellation for crystal clear clarity. Add government-grade encryption. Then, package it all in a highly ergonomic and rugged design. In the hands of all security and military personnel, the APX single-band or multi-band two-way digital portable radio devices maximize resources. APX 8000H is multi-band with Wi-Fi access and certified to Div1 HazLoc standards.



APX 8000H
SRX Package

APX SERIES P25 TWO-WAY RADIOS

APX NEXT

APX NEXT™ is a revolutionary new mission critical smart radio hosted in a cloud environment. It offers an intuitive, smart interface with a touch screen and voice control so your operators can keep their eyes up and attention where it matters. Mission-critical performance ensures your lifeline is there when you need it. And new applications and services bring new intelligence to the field. Meanwhile, its cloud infrastructure reduces configuration time and update cycles from months to minutes. Devices can adapt new capabilities—like video, data analytics, and AI applications—as your needs evolve. For instance, SmartConnect automatically switches your voice communications to broadband if you lose radio coverage.



DVR-LX: EXTENDED RADIO COVERAGE

Installation Security

Whether during an emergency or as part of your routine rounds, sometimes you need to go where RF coverage is challenged or non-existent. Don't let infrastructure limitations stand between you and a successful outcome. The solution is Motorola's Futurecom DVR-LX — whether you need to install clear, uninterrupted radio communications coverage in-vehicle, via fixed mount or for transportable operation. With DVR-LX, your LMR-devices stay LMR-connected.

Tactical Operations

It's inevitable that missions will eventually take you beyond reliable LMR coverage areas. But operational success requires uninterrupted audio over your network. DVR-LX keeps your teams connected and expands two-way portable radio communications with secure end-to-end encryption everywhere from command posts to danger zones. Extend your tactical edge and stay connected to your team.



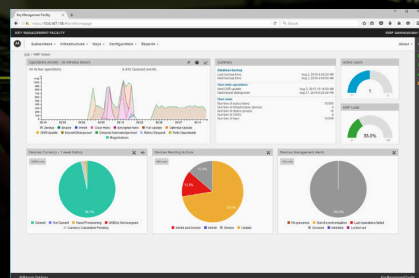
COMPLEMENTARY CYBERSECURITY PRODUCTS

SECURE YOUR COMMUNICATION SYSTEM AND ASSURE THE INFORMATION IT DISSEMINATES WITH PROACTIVE THREAT DETECTION, REAL-TIME RESPONSE AND CORRECTION.



CAC/PIV

CAC/PIV adds security flexibility to your ASTRO® 25 radio system, providing secure data access to computers at multiple classification levels. Built-in functionality blocks access to the infrastructure when the user employs an invalid smart card or smart card not provisioned for access to a particular system. A Centralized Active Directory tracks CAC/PIV authorization attempts, provides for efficient monitoring of new equipment, certificate expiry and log in failures. CAC/PIV Authentication is available on ASTRO 25 radio systems with release 7.17.3 or later, enabling smart card authentication for the following ASTRO 25 components: Windows (physical/virtual), RHEL (virtual), Hypervisor (ESXi virtual servers) and Embedded OS platform based network devices (Routers, Firewalls, Switches, Site Products etc.). Installation and integration of the CAC/PIV solution components is semi-automated and meets LCA requirements. Plus, downtime is minimal during upgrades and expansion.



KEY MANAGEMENT FACILITY (KMF)

The Key Management Facility (KMF) provides a robust and feature rich platform for effectively managing secure interoperable communications across all of your devices from a single centralised platform. The KMF is a flexible and secure system which allows you to efficiently manage encryption keys across your large fleet of communication devices. Furthermore, the KMF's web based client allows you to perform key operations via the interactive and easy to use web based interface from virtually anywhere. Whether you are operating in a P25 environment with a mixed fleet of devices, the KMF removes the inherent complexity out of administering and managing encryption keys. The KMF keeps your voice and data communications secure with encryption keys that update over-the-air without the delays, inconvenience or administrative costs of having users bring their devices into the depot for manual rekeying.

CRYPTR MICRO MOBILE DEVICE ENCRYPTION

Protecting sensitive data on commercial mobile devices is a challenge in any environment, but you can't risk settling for anything less than FIPS 140-2 Level 3 and NSA Suite B compliant standards. CRYPTR micro's reliable authentication and encryption capabilities maximize flexibility and are easy to use in sensitive operations across a variety of mobile devices.



KEY VARIABLE LOADER (KVL)

Securely and efficiently generate, transport and load encryption keys into secure communications products with the KVL 5000. The KVL 5000's easy to use, one-handed design and intuitive user interface integrates with Motorola Solutions' Key Management Facility (KMF) by provisioning radios to use Over-The-Air Rekeying (OTAR).





Motorola Solutions Australia Pty Ltd, 10 Wesley Court, Tally Ho Business Park, East Burwood VIC 3151 Australia 1-800-931855 [motorolasolutions.com](https://www.motorolasolutions.com)
MOTOROLA, MOTO, MOTOROLA SOLUTIONS and the Stylised M Logo are trademarks or registered trademarks of Motorola Trademark Holdings, LLC
and are used under licence. All other trademarks are the property of their respective owners. © 2023 Motorola Solutions, Inc. All rights reserved. 12-2023