



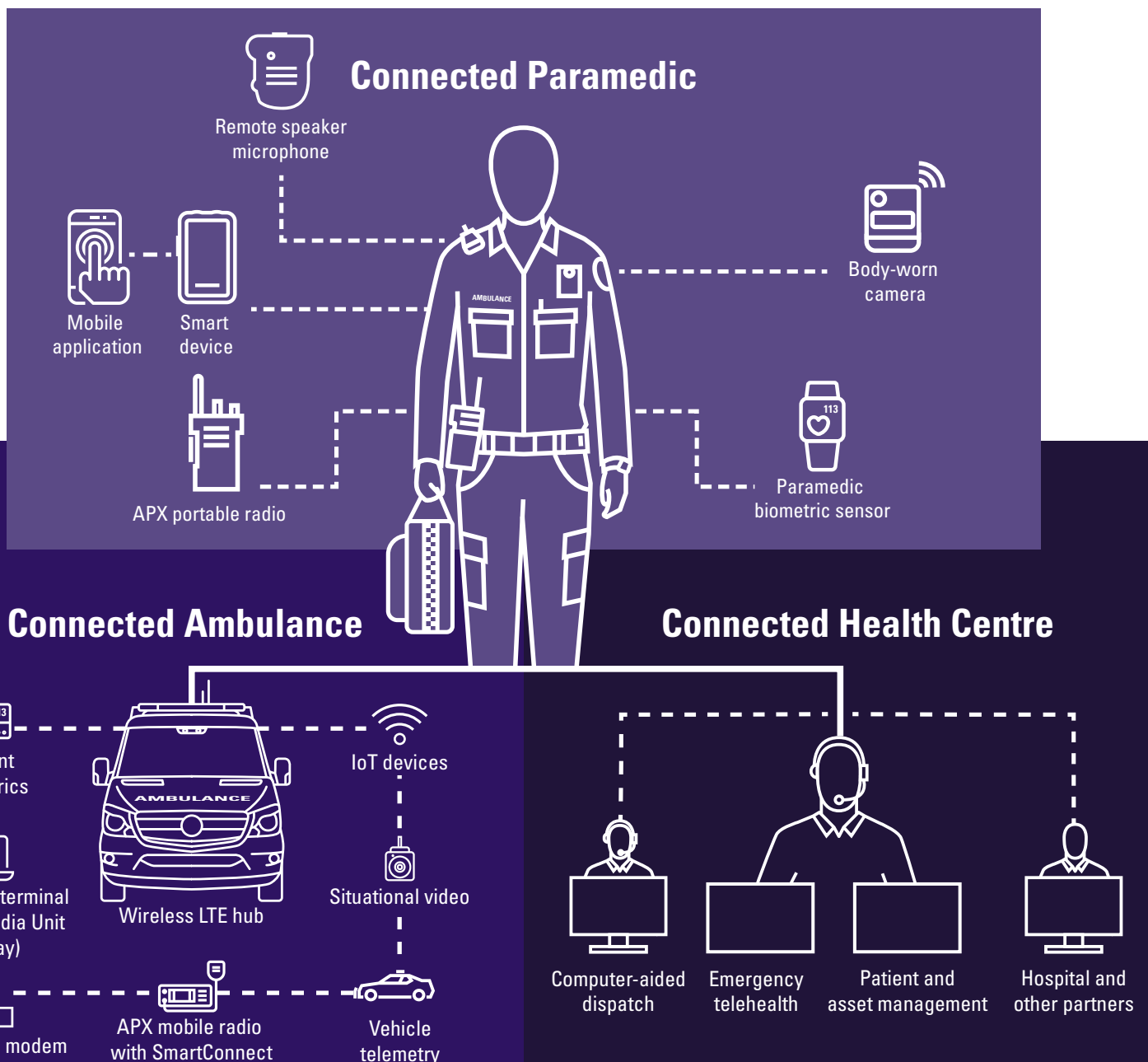
# IMPROVE PATIENT OUTCOMES AS A CONNECTED PARAMEDIC



# WHAT DOES A CONNECTED EMERGENCY MEDICAL RESPONSE LOOK LIKE?

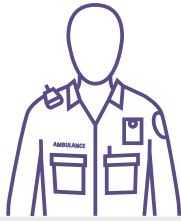
When making life saving decisions is all in a day's work, it is vital that the right information is with the best people at the right time.

Motorola Solutions' Connected Emergency Medical Response platform links every member of the treatment team in real time, so you can make the best decisions at the scene or in the Connected Health Centre. This communication ecosystem creates a virtual on-scene presence focused on saving lives.



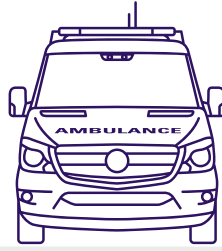
## CONNECTED PARAMEDIC

Fast, secure access to a broad range of information improves decision-making, multi-agency collaboration, patient outcomes and staff safety.



## CONNECTED AMBULANCE

Health centre, clinicians and hospitals can capture data from the vehicle including real-time video and location. Clinicians can assess patients as they travel in the ambulance.



## CONNECTED HEALTH CENTRE

Uses mission-critical radio network and LTE to communicate data in real time, to provide resource management as well as remote clinician support to frontline health workers.



### APX PORTABLE RADIO

- Leading-edge noise suppression technology
- Supports multiple simultaneous connections to body-worn cameras, audio accessories and radio control devices
- ViQi Voice Control (only with APX NEXT)
- Integrates with body-worn cameras for smart activation

### BODY-WORN CAMERA AND SENSORS

- Health centre and telehealth can monitor real-time video streaming
- Post-event video review for education and training
- Voice transcription for producing reports
- Access paramedic and patient biometrics and proactively warn of distress

### MOBILE APPLICATION

- Enhance paramedic experience by integrating with your existing systems and workflows
- Enables quick response to emergency situations, view and update emergency call details for effective and rapid voiceless response
- Monitor activity from anywhere: Know where and what emergency situation your staff / paramedics are responding to and what additional support they may need
- Enabled for CarPlay: Integrates with in vehicle media unit

### SMART DEVICE

- Provides single view of incident – location of people, resources, events and alerts
- Real-time voice and data transmits securely over any network using any device
- Patient QR code scanner links patient with all records
- Real-time collaboration with telehealth hospitals, doctors and specialist clinicians

### VEHICLE HUB

- Multiple bearer support – P25, LTE, satellite
- Internal and external video for patient welfare and situational awareness
- Backup radio communications
- Vehicle telemetry and other IoT devices
- Wireless hotspot around the vehicle
- Manage key operational workflows from within ambulance vehicles through CarPlay with added safe operation benefit through voice control

### APX MOBILE RADIO

- Automatically enable PTT over the best available carrier (LMR, LTE or satellite) via SmartConnect

### CONNECTED PATIENT

- Advanced medical monitors and AED sends patient biometric data to health centre
- Seamless hand-off to hospital – scanning patient QR code and stretcher barcode speeds up patient 'off stretcher'

- Computer-aided dispatch
- Sensors and location data displayed on a single map
- Holistic view of video and all other data sources
- Data & video analytics to support decision making
- Integrates with vehicle, sensors and body-worn cameras
- Multi-agency response management
- Single view of various data sources

### EMERGENCY TELEHEALTH

- Remote clinicians can see live-streaming video
- Real-time communications with paramedics

### PATIENT AND ASSET MANAGEMENT

- Correlates event data with patient ID
- Tracks ambulance inventory

## ENHANCING EMERGENCY MEDICAL CARE WITH SEAMLESS DISPATCH AND REAL-TIME INTELLIGENCE

Our goal is to provide paramedics with the best data and connectivity to help them speed up response and reduce time to treatment. Motorola Solutions technology works to support them, so they can save lives.

Integrated devices capture and provide more data to enable paramedics in the field while transmitting information to hospital and medical staff. The system reduces paramedics' administrative workload by connecting all event data to the patient ID.

- ✓ Rely on robust, secure, user-friendly body-worn cameras, used by emergency services workers globally. Live streaming to the control centre is standard.
- ✓ Handle personally identifiable information securely – you can host on premises, in the cloud or a hybrid, or we can provide managed hosting for you.
- ✓ Connect devices and sensors through Motorola P25 radios and commercial LTE devices.
- ✓ Empower the dispatch centre to provide information from a variety of inter-agency sources.
- ✓ Provide the emergency medical team with actionable intelligence.



## EQUIPPING PARAMEDICS TO FOCUS ON SAVING LIVES

For over 50 years in Australia and 40 in New Zealand, Motorola Solutions has been helping ambulance services work more effectively and provide exceptional patient care. We're experts in designing and integrating information management, communications and dispatch operations systems. We also have extensive international experience providing solutions for public safety and emergency services.

Motorola Solutions has more than 17,000 employees in 60 countries, serving over 100,000 customers in 100 countries. Our 450 staff across offices in Perth, Melbourne, Sydney, Adelaide, Canberra, Brisbane and Wellington work closely with our ambulance service partners across Australia and NZ.

## OUR INVESTMENT IN PUBLIC SAFETY

We invested \$732 million into research and development in 2021, which demonstrates our commitment to designing the next generation of public safety and security. We work to simplify, integrate, analyse and present the relevant information to your connected ambulance service, through the first and only mission-critical ecosystem designed specifically for public safety.

Founded on customer-centred research and development and reinforced by 90 years of mission-critical expertise, our public safety ecosystem unifies radio and broadband communications, intelligently captures and analyses video and integrates software solutions end-to-end. Our mission is to continuously innovate, so paramedics and the entire emergency team can provide more proactive and effective patient care.

## FUTURE-PROOFING YOUR INVESTMENTS

Motorola Solutions is committed to providing scalable platforms designed to meet both current and future communication needs. You can be confident your procurement is future-proofed by an integration plan designed to seamlessly meld existing and upcoming data devices and systems. To meet your changing operational requirements, we engineer all our products to be highly customisable and easily scalable.

Learn more at <https://www.motorolasolutions.com/>



**MOTOROLA SOLUTIONS**

Motorola Solutions Australia, 10 Wesley Court, Tally Ho Business Park, East Burwood VIC 3151 Australia 1-800-931855 [motorolasolutions.com](https://www.motorolasolutions.com)  
MOTOROLA, MOTO, MOTOROLA SOLUTIONS and the Stylized M Logo are trademarks or registered trademarks of Motorola Trademark Holdings, LLC and are used under license. All other trademarks are the property of their respective owners. © 2020 Motorola Solutions, Inc. All rights reserved. 6-2020