



# APX NEXT ACCESSORIES



# PROTECT YOUR **FOCUS** WHEN IT MATTERS MOST

## **APX NEXT**

IN PUBLIC SAFETY, FOCUS IS  
YOUR GREATEST RESOURCE.  
MAKE SURE IT'S PROTECTED  
WITH APX NEXT®.

### **A MASSIVE ADVANCE IN MISSION-CRITICAL VOICE AND DATA**

Your radio is your lifeline. APX NEXT is our next step in advancing it. It's designed to military standards for extreme ruggedness. The touchscreen works with or without gloves—in rain, dirt, and dust. Digital mics and high-power speakers deliver our best audio ever, while SmartConnect keeps you connected even beyond your P25 system. The result is a radio that works when you need it, without pause, distraction or doubt.

### **EFFORTLESS IS ALWAYS IN REACH**

APX NEXT is designed for effortless usability when everything is on the line. Intuitive knobs and buttons are easily distinguished by touch. A mission-critical touchscreen makes it fast and easy to operate your radio. ViQi Voice Control understands a huge range of natural language voice commands, so you can operate the radio with eyes-up awareness. Every interaction is simple, fast and logical. You stay focused on what matters—your mission and your safety.

### **BRING NEW INTELLIGENCE TO THE POINT OF ENGAGEMENT**

APX NEXT mission-critical apps bring new intelligence to the field. And as part of our unique, end-to-end public safety ecosystem, APX NEXT data and operations are secure, and new capabilities can be seamlessly added as your needs evolve.

### **UPDATE YOUR FLEET IN MINUTES, NOT MONTHS**

APX NEXT gives you back time: a cloud-based provisioning system prepares radios before they arrive. Remote updating keeps radios in the field, with zero touch and zero downtime. MyView Portal provides direct access to subscriptions, warranties and licences, and a range of services helps you manage your operation. With APX NEXT, your ownership experience is streamlined, so your valuable resources stay focused and ready.





# TABLE OF CONTENTS

EXPAND AND CUSTOMISE YOUR RADIO'S  
FUNCTIONALITY WITH BEST-IN-CLASS  
ACCESSORIES.



## ANTENNAS

Stubby	5
--------	---

All-band	5
----------	---

## AUDIO

Remote Speaker Microphones	7
----------------------------	---

Earpieces	10
-----------	----

Surveillance Kits	10
-------------------	----

## CARRY

Hybrid Leather Carry Case	12
---------------------------	----

Carry Attachments	12
-------------------	----

Classic Holster	13
-----------------	----

## ENERGY

Impres 2 Batteries	15
--------------------	----

Impres 2 Chargers	16
-------------------	----



A close-up photograph of a woman in a light blue police uniform. She is holding a black Motorola APX NEXT radio with a long, thin antenna. The background is a blurred cityscape under bright sunlight. The text 'ANTENNAS' is overlaid in large blue letters, and 'DESIGNED FOR WEARABILITY' is in smaller white letters below it.

# ANTENNAS

DESIGNED FOR  
WEARABILITY



# ANTENNAS

## DESIGNED FOR WEARABILITY

### DETAILS

Motorola Solutions’ redesigned antennas provide convenience without compromising performance. Shorter and more flexible, these antennas conform to the users’ mission critical environments.

- The new UHF stubby antennas deliver great coverage but will not snag clothing or equipment.
- The new Whip All-band Antenna (V,U,7/800MHz) is fabricated using a new polymer that delivers 40% better flexibility.

### SPECIFICATIONS

	UHF R1 Stubby	UHF R2 Stubby	All-band
Part Number	AN000369B01	AN000369B02	AN000297A01
Frequency Range	380-470MHz	450-527MHz	V,U,7/800 MHz
Length	9cm	9 cm	20cm
Integrated GPS	No	No	No

### ANTENNA BANDS<sup>1</sup>

Coloured antenna ID bands are available for easy customisation and come in packs of 10.

1. Coloured bands are only compatible with the all-band antenna (not UHF R1 Stubby or UHF R2 Stubby antennas).

- 32012144001 Grey
- 32012144002 Yellow
- 32012144003 Green
- 32012144004 Blue
- 32012144005 Purple

Will the new antennas in APX NEXT (stubby single-band and flexible all-band) work with other APX family radios such as the APX 8000 and APX 6000?

No. The current APX antennas have the GPS hardware embedded. The APX NEXT antennas do not have GPS hardware because the hardware is located in the radio itself. This means that APX NEXT antennas cannot be used with other models of APX radios.





# AUDIO

HEAR AND BE HEARD  
LIKE NEVER BEFORE



# XVP REMOTE SPEAKER MICROPHONE

MAXIMIZE YOUR MISSION CRITICAL VOICE TECHNOLOGY

## DETAILS

The mission critical Xtreme Voice Plus (XVP830 / XVP850) Remote Speaker Microphone delivers the clearest and loudest audio communications in a sleek, compact package. Built to work as a system, the XVP RSM leverages your APX™ or APX NEXT radio audio capabilities to strengthen the most important thread of your lifeline: ultra-clear voice communications. So no matter where you are or how you speak, you can be confident that, for every message, you'll hear and be heard clearly.

In dynamic, high-stakes conditions, nothing outperforms the immediacy of voice communications. To be most effective, experience optimal audio performance with the XVP RSM when compared to standard single or dual mic RSM designs.

## KEY FEATURES

- Loudest, clearest speaker
- **Multi-mic capability:** four high dynamic range microphones
- Advanced windporting
- Adaptive noise suppression
- Intrinsically safe
- Enhanced ergonomic design

## EASY ACCESS TO RADIO CONTROLS

### State of Emergency

Activate or deactivate emergency mode from your XVP RSM.

### Full Scale Volume Control

Hold the Up/Down lever in the (+) increment or (-) increment position and your APX NEXT radio will ramp the XVP RSM speaker loudness to the highest or lowest available volume setting.

### Radio Function Buttons

Configure the one-dot, two-dot and three-dot buttons to access key radio functionality from your XVP RSM.





# EASY ACCESS TO VIQI

VIQI IS YOUR VIRTUAL ASSISTANT, DESIGNED FOR PUBLIC SAFETY. THE THREE-DOT DEDICATED VIQI BUTTON ON YOUR XVP RSM ALLOWS YOU TO OPERATE VIQI FROM YOUR SHOULDER.

It's ViQi's job to quickly provide the information you need to stay safe and effective. She understands natural language voice commands, from changing zone, channel and volume, to getting status checks. All while keeping your hands free and your focus on your surroundings.

## XVP RSM BUTTON CONFIGURATION

XV RSM Actual Size\*



\* Actual size may not be represented based on viewing media.

## XVP RSM SPECIFICATIONS

### GENERAL

XVP850 Part Number with Channel Knob	PMMN4135
XVP830 Part Number without Channel Knob	PMMN4136
Dimensions (RSM Head only) Channel Knob	3.66 x 2.27 x 1.21 in (93 x 58 x 31 mm)
Weight (Total Kit)	PMMN4135: 10.05 oz. (285 g) PMMN4136: 10.23 (290 g)
Clip	360° Rotating Clip with D-Ring
Colour	Black
Power Source	Radio Battery
Secondary Accessory Interfaces	3.5 mm Non-threaded
Intrinsically Safe	<b>Div 1</b> Class I (Groups C, D), Class II (Groups E, F, G), Class III <b>Div 2</b> Class I (Groups A, B, C, D), Class II (Groups F, G) Class III

### MICROPHONE

Type	Beam Forming
Sensitivity	-42dBV Typical
Distortion (THD)	<5% wideband
Hot Microphone Feature	Yes
IMPRES™	Yes
Noise Cancellation	4 Microphone Adaptive Noise Suppression Algorithm
Windporting Microphone	Yes
Adaptive Audio Engine	Enabled through radio*

### SPEAKER

Diameter	1.9 in (47 mm)
Speech Loudness @12 in (300mm)	105 Phon**
Distortion (THD)	<15%

### CONTROLS

Top	Orange Emergency, Volume up/down, channel control (PMMN4135A only)
Side	PTT, 2 Programmable (1-dot, 2-dot)
Front	1 Programmable (3-dot ViQi)

\* For more information on APX accessories, please visit: [www.motorolasolutions.com/apx](http://www.motorolasolutions.com/apx)

\*\* RSM loudness with legacy APX 6000 (AN) and SRX 2200 (AN) model is 101 Phon.

The dedicated ViQi button\* allows users to send voice commands from the RSM for simple radio control or run database queries and keep eyes up intelligence.

\* ViQi Assistant must be installed in the radio in order to enable ViQi commands from RSM.

### CABLE

Length	11 in (280 mm) Coiled Length
Flex Life	100k Cycles Minimum
Pull Strength	40 lbs (18.14 kg) Minimum
Cable Jacket	Thermoplastic Elastomer (TPE)

### ENVIRONMENTAL

Operating Temperature	-30°C to +60°C (-22°F to +140°F)
Storage Temperature	-55°C to +85°C (-67°F to +185°F)
Mil Specs	MIL810H Method 506.4 (Rain), MIL810H Method 509.4 Procedure 1 (Salt Fog), MIL810H Method 510.4 Procedure 1 (Dust), MIL810H Method 514.5 Procedure 1 Category 24 (Vibration), MIL810H Method 516.5 Procedure 1 (Vibration)
ESD	IEC / EN 61000-4-2
IP Rating	IP68 (2 metres, 4 hours)
Impact Grill	1.25 in (31.75 mm) Diameter Steel Ball Drop
Work-When-Wet	Yes

### SECONDARY AUDIO ACCESSORY

Kit Number	Description
PMLN8120	3.5mm Xtra Loud Receive Only Earpiece with Translucent Tube

### REPLACEMENT PART

Kit Number	Description
PMLN8312	Low profile swivel clip with D-ring
PMLN8313	Channel knob
PMKN4260	Coil cord

### COMPATIBLE RADIOS

APX 6000, APX 6000XE, APX 8000, APX 8000XE, APX 8000H, APX 8000HXE, SRX 2200, APX NEXT, APX NEXT XE

### COMPATIBLE RADIO FIRMWARE

APX Radios : R24.00.00 and beyond  
APX NEXT Radios: R03.20.00 and beyond





# AUDIO

## HEAR AND BE HEARD LIKE NEVER BEFORE

### SURVEILLANCE KITS



**IMPRES™**  
**Two-Wire Surveillance Kit, Beige**

PMLN6130



**IMPRES Over-the-Ear**  
**Two-Wire Surveillance Kit, Black**

PMLN6127



**IMPRES**  
**Two-Wire Surveillance Kit, Black**

PMLN6129



**Two-Wire Surveillance Kit**  
**With Translucent Tube, Black**

RLN5312 (Requires BDN6783)



**APX™ 3.5mm Threaded**  
**Audio Accessory Adapter**

BDN6783

### EARPIECES



**3.5 mm Rx Only Earpiece with**  
**Translucent Tube**

PMLN8120

#### Will APX accessories work with APX NEXT?

APX NEXT has the same audio accessory port as other APX radios. Some APX accessories, including surveillance kits, are certified and others are not. Batteries and single-unit chargers will be different. APX NEXT utilizes Bluetooth® 5.0 and the NFC Bluetooth standard. Therefore, MPP Bluetooth accessories will not be compatible. Please check with your technical sales representative for more details.

#### Can you use Voice Control or Virtual Partner from an accessory?

The XVP RSM is the only accessory with which Voice Control and Virtual Partner are accessible.





# CARRY

SECURE, EASY ACCESS





# HYBRID LEATHER CARRY CASE

## SECURE, EASY ACCESS

### DETAILS

The professional elegance of formed leather complemented with a durable, impact resistant plastic unite to provide a never before seen carry solution for APX NEXT. Our hybrid leather carry case simplifies one handed device access without compromising device security so your hands are free and information is within reach. A quick connect belt loop swivel also allows you to easily disconnect and quickly retrieve your radio. A security strap inspired by gun holsters prevents the device from dislodging during operations, improving user confidence.

### KEY FEATURES

- Secure retention allows simple one hand device access
- Built-in audio ports enable you to leave your radio in the case for audio applications without degrading device transmit and receive performance
- Accommodates connection of the XV RSM



Standard clip slot present under D bracket

### PART NUMBER SPECIFICATIONS

	Part Number	Use with Batteries	Attachments (sold separately)	
Standard Capacity	PMLN7948	NNTN9216 NNTN9217	<b>Swivel Belt Loop</b> 2.5" - PMLN5407 2.75" - PMLN5408 3" - PMLN5409	<b>Belt Clip</b> 2.5" - NTN8266 3" - PMLN7965
High Capacity	PMLN7964	NNTN9089 NNTN9090		



HYBRID LEATHER CARRY CASE



HYBRID LEATHER CARRY CASE - BACK VIEW  
(Swivel Belt Loop sold separately)

# CLASSIC HOLSTER

SECURE, EASY ACCESS

## DETAILS

Lock down your APX NEXT radio with our classic holster. The innovative radio retention mechanism ensures your radio stays in place even in high pursuit, improving officer safety and securing your LMR investment.

## KEY FEATURES

- Ships in box with APX NEXT with the option to replace with the Hybrid Leather Carry Case
- Improved device retention compared to APX carry holsters
- Designed to enable device charging in the IMPRES 2 Multi-Unit Charger while secured using the 2.5" or 3.0" belt clip attachment



CLASSIC HOLSTER



CLASSIC HOLSTER - BACK VIEW  
WITH 3" BELT CLIP  
(sold separately - see page 12)



## PART NUMBER SPECIFICATIONS

Part Number	PMLN7947
-------------	----------



# ENERGY

MAXIMISE POWER,  
LIFE AND MANAGEMENT  
WITH IMPRES™ 2





# IMPRES 2 BATTERIES

## LONG LASTING LIFELINE

### SPECIFICATIONS

	Standard Options	Standard HazLoc <sup>1</sup>
<b>Part Number</b>	NNTN9216	NNTN9217
Capacity	4400 mAh	4400 mAh UL Div 2
Operating Temperature	-30°C to +60°C (-22°F to +140°F)	
IP Rating	IP68 <sup>2</sup> APX NEXT System Rating	
APX NEXT Operating Time	13.8 hrs <sup>3</sup>	13.8 hrs <sup>3</sup>
Availability	In-Box Order Option or Aftermarket	In-Box Order Option or Aftermarket

	High Capacity	High Capacity HazLoc <sup>3</sup>
<b>Part Number</b>	NNTN9089	NNTN9090
Capacity	5650 mAh	5650 mAh UL Div 2
Operating Temperature	-30°C to +60°C (-22 °F to +140 °F)	
IP Rating	IP68 <sup>2</sup> APX NEXT System Rating	
APX NEXT Operating Time	18 hrs <sup>3</sup>	
Availability	In-Box Order Option or Aftermarket	In-Box Order Option or Aftermarket

### KEY FEATURES

- Built with highest energy density cells yet

For IMPRES 2 battery care tips, please visit  
<http://motorolasolutions.com/batterytipscare>

1. HazLoc: listed by UL to non-incendive standards: UL 121201 and CAN/CSA C22.2 No. 213-17 as safe for use in Class I, Division 2, Groups A,B,C,D; Class II, Division 2, Groups F,G; Class III Hazardous (Classified) Locations.

2. IP68: APX NEXT radio with battery attached submerged in 2 metres of water for 4 hours

3. APX NEXT operation life based on land mobile radio 5/5/90 use profile, touchscreen: on 1hr, SmartConnect: 30 mins, LTE: DRX Idle, GPS: Off, Bluetooth: Off, WiFi 80/20, NFC: Off, RSM connected



STANDARD CAPACITY

HIGH CAPACITY

# IMPRES 2 CHARGERS

## MAXIMISE POWER, LIFE AND MANAGEMENT

### DETAILS

APX NEXT makes use of IMPRES 2 charger technology available in single unit (SUC) and multi unit (MUC) charger configurations. Owners of an APX IMPRES 2 multi unit charger may convert one or more APX pockets with the field-installable APX NEXT pocket.

### IMPRES 2 MULTI-UNIT CHARGER

- Charge up to six APX NEXT batteries simultaneously for more efficiency
- IMPRES 2 charging algorithms increase charge cycles up to 60% over non-IMPRES
- Six pocket displays to view enhanced diagnostics
- Disable calibration mode or enable long term storage mode
- Optional wall mount kit NLN7967 available

### IMPRES 2 SINGLE-UNIT CHARGER

- Charge your battery by itself or while it's attached to the radio
- Advanced IMPRES 2 charging algorithms
- Ability to disable calibration mode via mode selection switch

### APX NEXT POCKET FOR APX MULTI-UNIT CHARGER

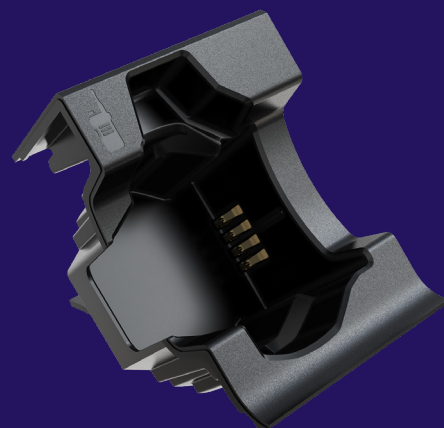
- End user field upgradeable
- Create APX NEXT/APX mixed device multi-unit charger

### SPECIFICATIONS

Product	Standard Options	Dimensions	USB Charging Ports
IMPRES 2 Multi-Unit Charger	NNTN9113	7.8 x 17.5 x 10.3 in (197 x 445 x 262 mm)	6
IMPRES 2 Single-Unit Charger	NNTN9259	2.8 x 3.9 x 4.8 in (70 x 100 x 123 mm)	2
APX NEXT Pocket for IMPRES 2 Multi Unit Charger	NNTN9212	N/A	N/A



IMPRES 2 MULTI-UNIT CHARGER



APX NEXT POCKET FOR  
IMPRES 2 MULTI-UNIT CHARGER



IMPRES 2 SINGLE-UNIT CHARGER





APX  
NEXT

Learn more at [motorolasolutions.com/apx-next-story](https://motorolasolutions.com/apx-next-story)



Motorola Solutions Australia Pty Ltd, 10 Wesley Court, Tally Ho Business Park, East Burwood VIC 3151 Australia 1-800-931855 [motorolasolutions.com](https://motorolasolutions.com)  
MOTOROLA, MOTO, MOTOROLA SOLUTIONS and the Stylised M Logo are trademarks or registered trademarks of Motorola Trademark Holdings, LLC  
and are used under licence. All other trademarks are the property of their respective owners. © 2020 Motorola Solutions, Inc. All rights reserved. 11-2020

