

What is SDS Remote Control?

This feature allows terminals to receive AT commands (normally sent into the PEI port) sent over the air using SDS messages.

Security is built in. There is a 6 digit password and commands can only be received from specified controllers. The feature provides the ability for remote radio management and allows users to obtain “live” information from radios.

The full set of commonly used AT commands can be used. These can include read/change the following:

- Audio volume setting
- Mode (TMO or DMO)
- Talkgroup
- Scanning and scan list

And read the following

- GPS location
- Base station quality

SDS Remote Control Applied

SDS-RC – OBTAIN COVERAGE DATA FROM RADIO

SCENARIO:

Radio User transmissions are poor. Complaints are being received about the lack of service.

ISSUES:

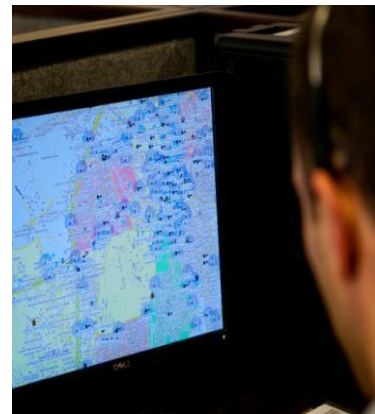
Organisation needs to know where the Radio User is to be able to verify coverage

IMPLICATION:

Can ask the Radio User “where are you” and ask for other information – but the most accurate information comes from the radio itself.

BENEFIT SDS Remote Control:

SDS RC means the organisation can request GPS, Site and signal strength information directly from the radio.



SDS-RC – ASSIST USERS WITH LIMITED RADIO EXPERIENCE

SCENARIO:

An event is taken place where a number of volunteers are required and they have little experience of using radios.

ISSUES:

Some Radio users may not know how to perform certain functions on the radio as there was limited time for training.

IMPLICATION:

The more experienced users could explain how the functions work by communicating over the Radio, however this is time consuming and will create unnecessary congestion on the network.

BENEFIT SDS Remote Control:

SDS RC means the more experienced users can be installed as “Controllers”. They are then able to send AT commands over the air via SDS to execute the change that the less experienced users are struggling with.

SDS Remote Control Pre-Requisites

Infrastructure:

SDR if not already installed (and software).

GMDN3642A DIMETRA DL360G7 SERVER HW

Software:

GM0127 SOFTWARE ENABLEMENT KIT.

QA01629AA ENABLE SDS REMOTE CONTROL, a license is required for each Radio you wish to have SDS Remote Control enabled on

Application:

Application required to remotely control radios. VATCH and new improved utility is available to provide this functionality for testing/demo.

Third party may need to develop an integrated application for large Command and Control users.

SDS Remote Control Linkage

GPS : SDS-RC can request positional data from radios, along with other information such as signal quality to obtain coverage information. (Possible linkage to Man-Down to obtain radio location).

Gateway (and & Repeater) : the ability to put a remote unit into Gateway Mode and back to TMO. It is also possible to put a remote radio into Repeater mode but recovery to TMO would need commands to be sent in DMO (as a repeater is in DMO only).

SC-G : ability to make a radio change TG, and therefore the SC-G settings would be re-run to verify cell usage.

E2EE SDS : can be used to encrypt the SDS RC short data messages.

How to Order

There are three methods available to you for Software Ordering

1. DC Germany – The most efficient method for enabling software features, only available for new terminal purchases. Simply make a request during your initial terminal order stating what features along with part numbers you wish to enable. Order via OPG or TPCT
2. CPS/Software Dongle - State what features you want (codes are shown for each feature) and the number of radios you want enabled with the feature. Order the software enablement dongle through Motorola Order Processing Group (OPG). Once the USB based dongle arrives you can connect the dongle to your CPS station to start programming the feature in to your radio
3. ITM - Using your iTM you then select the radios that you want enabled and iTM will produce a TEI's based license request. This information is then sent to Motorola Order Processing Group (OPG). This license will then be produced and sent back to you. It can only be used by you on your iTM installation. Once you have received the license, you import this into iTM and establish iTM "jobs" to upgrade and enable the radios.

Please start any discussions about any of the features with your Sales representative or Customer Support Manager. Motorola can provide additional assistance and information in terms of benefits, deployment process etc