



# MCC 7500E IP DISPATCH CONSOLE

## THE CONTINUAL PURSUIT FOR OPERATIONAL EFFICIENCY

Better manage the flow of critical information and be the pipeline of intelligence to those who need it most with the MCC 7500E IP Dispatch Console. The ultra small form factor makes deployment simple and easy across dispatch centers where space is at a premium. Additionally, the MCC 7500E offers dual Ethernet connections minimizing the risk of a lost connection.

### TAKE IT WITH YOU

The MCC 7500E IP Dispatch Console provides a full console interface experience anywhere inside or outside of your radio network. It can operate as a permanent, back up or mobile solution, with full console functionality. Whether for a planned event or immediate emergency response, command a wealth of information for high-impact results. Connect to responders with voice, Talkgroup Text Message and tone communication on ASTRO® 25 trunked and conventional systems.

#### NEW SMALL FORM FACTOR

CONTINUAL REDUCTION IN PHYSICAL SPACE REQUIREMENTS FOR THE HARDWARE

REDUNDANCY IN ETHERNET CONNECTIONS HELPING TO ENSURE HIGH AVAILABILITY OF THE SYSTEM

### DISPATCH APPLICATION ECOSYSTEM

The ability to integrate Motorola Solutions and other third party dispatch applications with the MCC 7500E console API creates a dispatch environment that helps you meet the needs of your first responders.

#### Motorola Solutions Certified Logging Recorders

The Motorola Solutions certified NICE and Verint Logging Recorders provide seamless dedicated recording for the MCC 7500E console to improve productivity and offer post incident insights to your operations. They are the only recording solutions that meet all of the extensive Motorola Solutions performance specifications required to be implemented on the ASTRO 25 IP network.

#### PremierOne™ Computer Aided Dispatch

PremierOne CAD integrates with the MCC 7500E console to streamline workflows, minimize key strokes and reduce input error for more dispatch efficiency. Your personnel can operate within a single interface and from one mouse and keyboard to receive 9-1-1 calls, manage an incident response and communicate critical information to responders in the field.



## Advanced Messaging Solution

The Advanced Messaging Solution builds upon the Talkgroup Text Messaging capability of the MCC 7500E IP Dispatch Console, further enhancing responder decision-making abilities by facilitating two-way texting between dispatch and users in the field. When voice communication is not an option, Advanced Messaging Solution provides responders with critical information, right at their fingertips, on portable radios or broadband devices.

## APX Personnel Accountability

Streamline on-scene roll calls and gain the confidence to make critical decisions with an easy to use single screen view showing the status of all on-scene personnel. Rapidly execute evacuation orders to quickly alert your team to changing situations and see that everyone acknowledges.

## EASE OF USE MAKES FOR MORE EFFECTIVE SUPPORT

First responders don't know or care where your dispatchers are. Yet, they need the same high level of responsiveness in each and every emergency. The MCC 7500E leverages a graphical user interface (GUI) that has been continuously improved upon based on user feedback for over 10 years. Examples of enhancements range from various color choices for resource backgrounds, buttons, or on screen text to fully customizable sizes of resources. The continual pursuit of operational efficiency enables your dispatchers to quickly adapt to a new system with a short learning curve and minimal training allowing them to feel right at home.

The customizable GUI design helps your dispatchers become more efficient and productive using purpose-designed workflows with minimal click-throughs, critical resource information displays and contextual right-click menus. It is also beneficial for switching seamlessly between the MCC 7500E, MCC 7500 and MCC 7100 IP Dispatch Consoles. enabling dispatchers to provide the same level

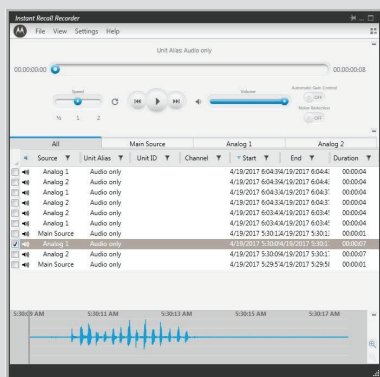
of service every time, with no additional training. Extra features are designed specifically to enable a smooth transition. The Enhanced Integrated Instant Recall Recorder helps maintain typical dispatch operation without extra equipment or installations. It can provide your dispatchers with access to the audio and associated call information across all call on their dispatch consoles. With flexible configuration options the Enhanced Integrated Instant Recall Recorder can be easily customized to meet the needs of individual dispatchers. The optional Audio Interface Module (AIM) facilitates use of purpose-built dispatch accessories if desired in place of commercial off-the-shelf USB accessories. With the MCC 7500E, you'll maximize your effectiveness in coordinating and informing first responders, from anywhere.

## THE INTELLIGENCE YOU NEED, EVERY TIME, ALL THE TIME

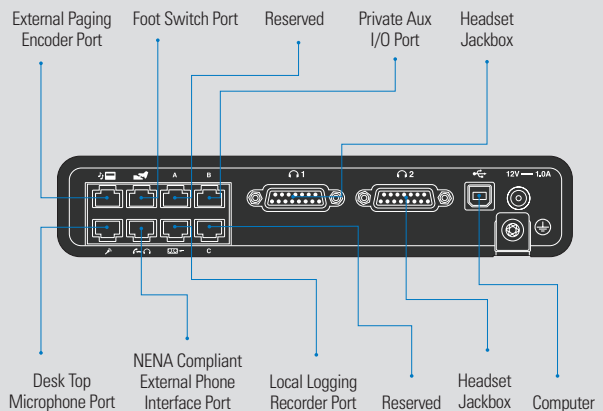
First responders rely heavily on dispatch for support. They need to be confident that your team can always offer the right information and coordination when an emergency arises. The inherent reliability and security of the ASTRO 25 system ensures first responders and dispatchers stay connected with best-in-class audio quality. Redundant Ethernet connections provide dispatchers with continued access to their dispatch consoles even during failures in the IP network LAN switches. For peace of mind that the right information always gets through, rely on the MCC 7500E IP Dispatch Console's smart voice prioritization and intelligent audio routing capabilities at your dispatch positions. Furthermore, continuous link and resource polling gives your dispatchers the confidence that once connected they stay connected.

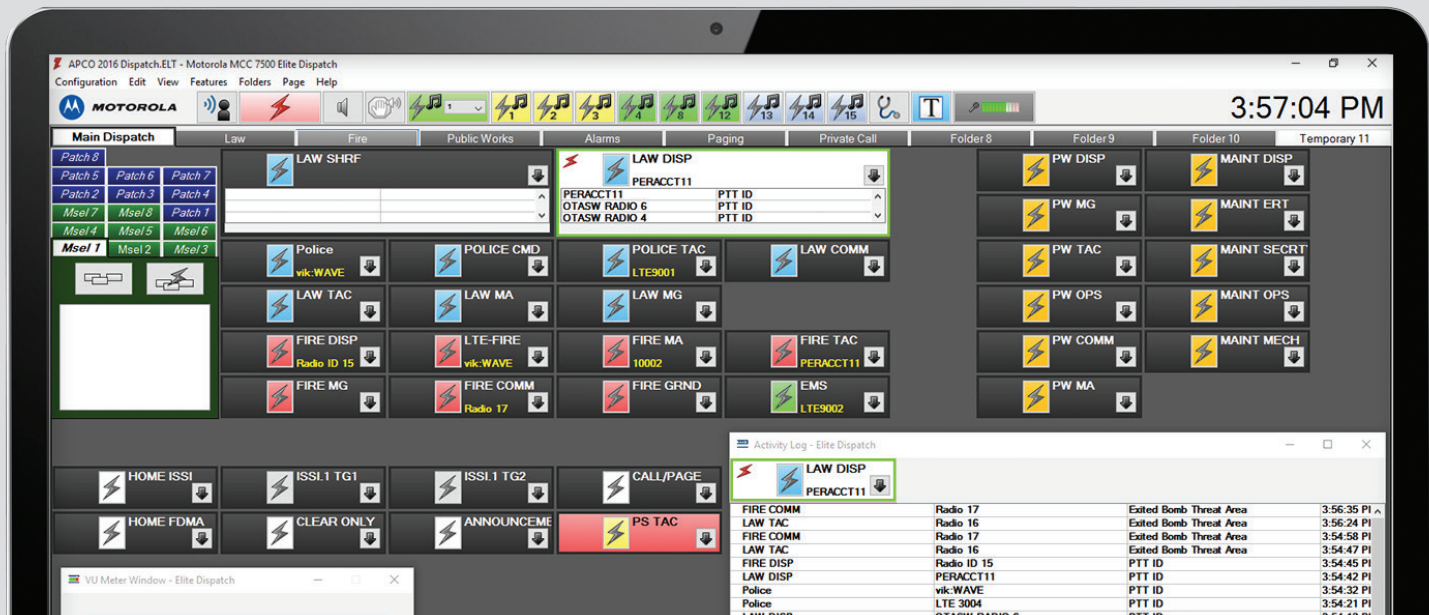
## SCALE UP YOUR SYSTEM NOT YOUR COST

If your public safety agency is like most others, money is tight for you right now.



Enhanced Integrated Instant Recall Recorder





Tailor the MCC 7500E IP Dispatch Console to your needs with the customizable user interface

The MCC 7500E console is a cost effective, completely software-based solution. Flexible deployment options reduce physical space requirements and system management does not require specialized hardware knowledge. New functionality and expanded capacity arrive via software updates – upgradeable from a centralized, single point of contact. This cuts down on the time, expense and inconvenience of growing or managing your system.

Scale to the needs of your organization now and into the future with licensed capacity of 15, 30, 45, 60, 100, or 160 Radio Resources. Deploy the MCC 7500E console incrementally with interoperation with the MCC 7500, for even more installation flexibility.

## SOLUTION COMPONENTS

### MCC 7500E Console Positions

The MCC 7500E console connects directly to the radio system's IP transport network without gateways or interface boxes. Vocoding and encryption are performed within each software-based operator position. MCC 7500E consoles function as an integrated component of the total radio system without additional centralized electronics.

The MCC 7500E console position can be comprised of a desktop workstation with just a headset, or operate with a small formfactor computer and monitor with a keyboard, mouse/trackball/touchscreen, up to 8 assignable speakers, and a range of audio accessories. The MCC 7500E is designed for the workspace of the future. At 2.3 inches tall, the HP Z2 Mini is perfectly suited for dispatch operations where space is limited.

### Audio Accessories

Both Mission-Critical Audio Accessories are available including goose neck microphone, foot-switch and headset jack-box. Additionally, commercially available USB connected accessories can be used if desired.

## Compatibility

For dispatch users who need to conduct dispatching activities and other tasks on a single computer, the following applications are supported for such installation:

- K Core Configuration Manager
- ASTRO 25 Advanced Messaging Solution
- MKM 7000 Console Alias Manager Server
- MKM 7000 Console Alias Manager Client
- PRX 7000 Console Proxy Server
- Voting Control and Display Client
- Personnel Accountability Client
- PremierOne Text Messaging Client.

## Radio Resource Capacity Licenses

Radio Resource Capacity Licenses are available for 15, 30, 45, 60, 100, or 160 radio resources.

Capacity licenses are issued for the life of the product and continue in force when the system is upgraded.

## Remote Operation

Full dispatch capability is provided when operating outside of the ASTRO 25 Network. The MCC 7500E console supports firewall controlled access for up to 160 channels into the secure ASTRO 25 network from the Customer Enterprise Network (CEN). For remote access with additional security, virtual private network (VPN) access is also supported through the CEN.

## SPECIFICATIONS

System Compatibility	ASTRO® 25 System
Vocoder Algorithms Supported	AMBE, (IMBE is compatible with AMBE), G.728 (for Analog Conventional), G.711 (Telephony)
Encryption Algorithms Supported	AES (256 bit), DES-OFB, ADP (Advanced Digital Privacy)
<b>MCC 7500E IP DISPATCH CONSOLE CAPACITIES</b>	
Assignable Radio Resource Capacities	15, 30, 45, 60, 100, 160
Simultaneous Audio Sessions per Console	60
Bandwidth Requirement per Channel	35 kbps
Simultaneous Encryption/ Decryption Sessions per Secure Capable Console	60
Multi-Select Groups per Dispatch Console	Up to 16 (with up to 20 Members per Multi-Select group)
Patch Groups per Dispatch Console	Up to 16 (with 20 members per patch group)

## USB AUDIO INTERFACE MODULE SPECIFICATIONS

Before you mount and install the USB Audio Interface device (AIM), verify that you meet the environmental requirements necessary for the device to operate.

	Connector type	Device
Audio Interface Module (AIM)	RJ45	One desktop gooseneck microphone, one local logging recorder, one external telephone headset, one external paging encoder, one footswitch, and support for four private Aux I/O's.
	DB15	Two headset jacks connectors.
Dimensions (H x D x W)	1.69 x 5.23 x 8.39 in (43 x 133 x 213 mm)	
Weight	1.43 lbs (0.65 kg)	
AC Operating Voltage for the USB AIM Power Supply	90 VAC - 264 VAC	
Minimum Input Voltage	90 VAC with 57-63 Hz	
Maximum Input Voltage	264 VAC with 47-53 Hz	
Typical Input Voltages	115 VAC and 230 VAC	
DC Operating Voltage for the USB AIM Device	12 VDC (nominal)	
Maximum Power Consumption	0.5 A at 12 VDC (6 Watt)	
Operating Temperature	5°C (41°F) – 40°C (104°F)	
Storage Temperature	-25°C (-13°F) – 70°C (158°F)	
Relative Humidity Operating	0% – 90% relative humidity at 40°C non-condensing	
Certifications	CE CMM EPUF 50 EAC Safety CSA 60950-1-07 2011-12 UL 60950-1 2011 IEC 60950-1 2005	EMC Emissions & Immunity FCC part15B Class B ICES-003 EN 60950 - 1 : 2006 + A11 : 2009 + A1 : 2010 + A12: 2011 EN55022 :2010 EN55024 :2010 EN 61000-3-2:2006 +A1:2009 +A2:2009 EN 61000-3-3:2008 Energy Efficiency International Energy Efficiency Level V (AIM power supply only)



Motorola Solutions, Inc. 500 West Monroe Street, Chicago, IL 60661 U.S.A. [motorolasolutions.com/dispatch](http://motorolasolutions.com/dispatch)

MOTOROLA, MOTO, MOTOROLA SOLUTIONS and the Stylized M Logo are trademarks or registered trademarks of Motorola Trademark Holdings, LLC and are used under license. All other trademarks are the property of their respective owners. © 2017 Motorola Solutions, Inc. All rights reserved. 08-2017