

An 8 Solid-State Output Module for the MOSCAD-L RTU

The 8 Digital Output (DO) module is an accessory to the MOSCAD-L RTU that provides 8 electronic closure (open FET) outputs. The closures may directly connect into other small-signal electronic equipment, or may control interpose relays that connect to, and control, other on-site devices. Examples include lighting circuits, control circuits, and interpose relays.

Data Output

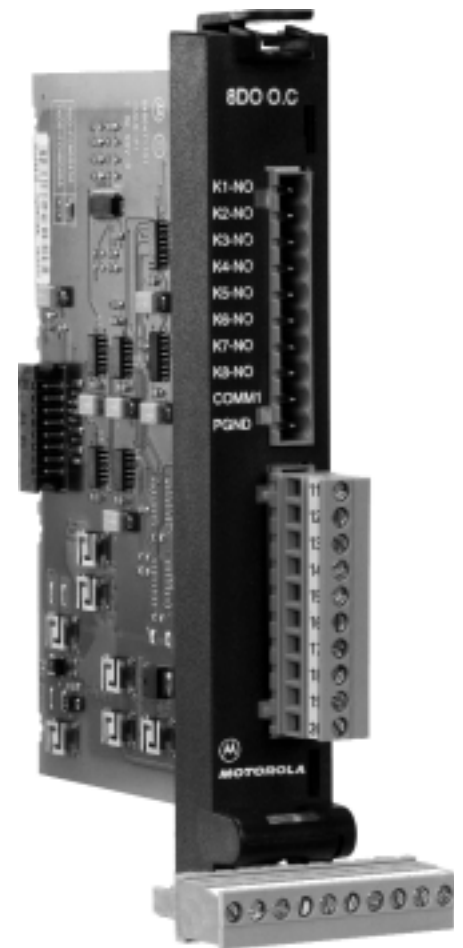
Under the control of the defined application program, the CPU module will move the current status of the data variables in the CPU that are associated with the open outputs into the 8DO O.C. module via the motherboard. The 8DO O.C. module then “opens” or “closes” the outputs according to the status of this data.

On-site electrical devices may be controlled by the MOSCAD-L application.

Activation Feedback

The module provides feedback to the CPU that the output circuit has indeed closed.

This feedback may be treated as digital inputs and incorporated in the Application

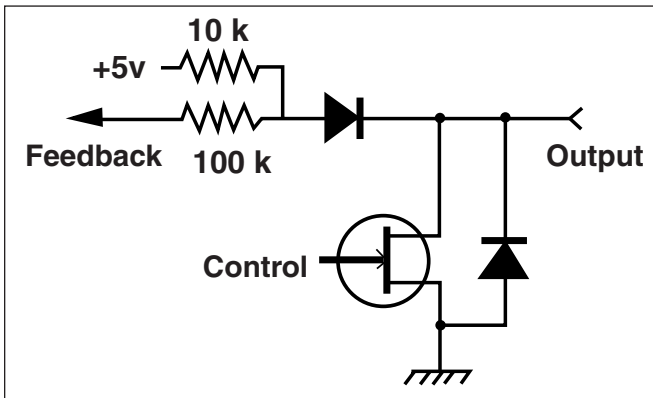


8DO O.C. Module for the MOSCAD-L RTU

General Specifications

Outputs	8 "open FET" rated at 0.5 amp @ 32 Vdc
Output Protection	1 kV between contacts, 1.5 kV between contact & coil per ANSI C37.90.1-1989 (requires termination panel)
Readback	Diode-isolated readback per output for positive confirmation of command execution
Diagnostic	LEDs on CPU module: 8 outputs
Current Drain	2 ma @ 12 Vdc; 1.5 ma @ 24 V; 1 ma @ 48 V
Environment	Humidity: 0 to 90% @ +50°C Temperature: -30 to +60°C

Typical Module Output Circuit



Connections Chart

Term	Function	Term	Function	Term	Function	Term	Function
1	K1-NO	6	K6-NO	11	Not used	16	Not used
2	K2-NO	7	K7-NO	12	Not used	17	Not used
3	K3-NO	8	K8-NO	13	Not used	18	Not used
4	K4-NO	9	common	14	Not used	19	Not used
5	K5-NO	10	P.gnd	15	Not used	20	Not used



MOTOROLA

Motorola U.S.A.
1301 E. Algonquin Road
Schaumburg, Illinois 60196
Phone: 1-800-567-7347

Motorola Canada Ltd.
3900 Victoria Park Avenue
North York, Ontario M2H 3H7
Phone: 1-800-268-5758

Motorola Latin America Division
8000 W. Sunrise Blvd.
Plantation, FL 33322
Phone: 1-954-723-8563
Phone: 852-2966-4366

Motorola Asia Pacific Ltd.
39/FL NatWest Tower
Times Square, Causeway Bay
Hong Kong, PRC-SAR
Phone: +44-1256-484341

Motorola UK Ltd.
Jays Close, Viable Industrial Estate
Basingstoke, Hampshire
RG22 4PD

©, Motorola, and MOSCAD are trademarks of Motorola Inc.

All company and product names are trademarks or registered trademarks of their respective companies

Printed in U.S.A. (0104) VPS

Motorola is an Equal Employment Opportunity/Affirmative Action Employer

Visit us on the Web at <http://www.mot.com/MOSCAD>