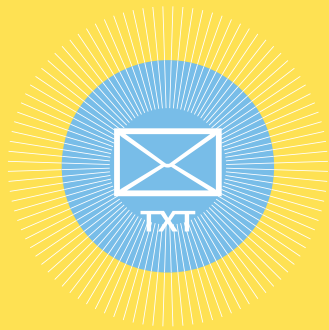


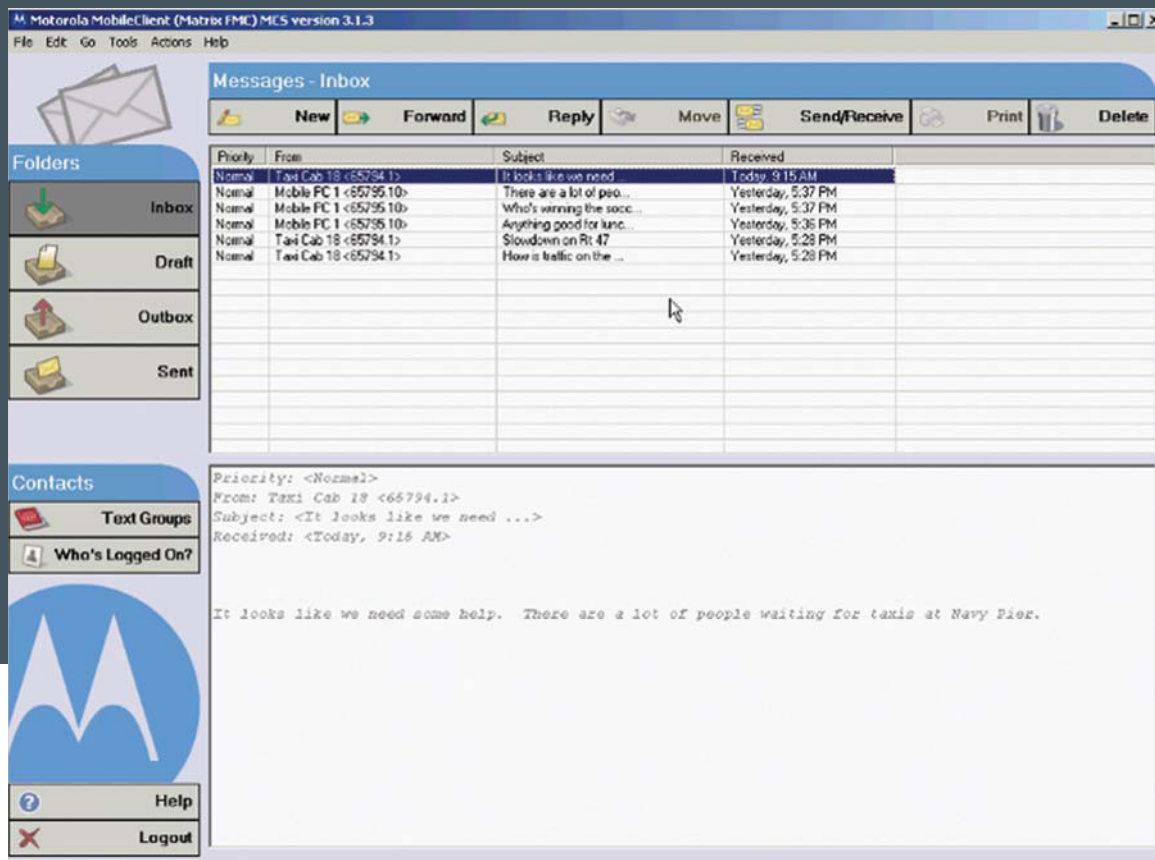
# MOTOTRBO Text Messaging

MOTOTRBO's advanced digital technology supports data applications, including Text Messaging Services, which enables text-format communication between radios and dispatch systems, between radios and email-addressable devices, and to remote PC clients attached to radios. MOTOTRBO Text Messaging Services can:

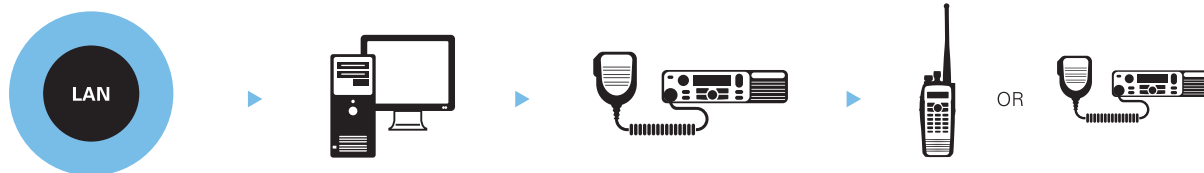


- Reduce operating costs by consolidating communication devices—no need for two-way pagers.
- Provide users with real-time information such as addresses or directions thus enabling better asset management.
- Enable an alternate means of communication—a user can read a text message in a loud environment where voice is difficult to hear or when sensitive information is being communicated.
- Permit fast and flexible communication with any pre-configured, email-addressable device—including cell phones and PDAs.
- Install easily into a PC operating Windows XP or Windows 2000.
- Bring you professional capability, efficiency and reliability.
- Add an email gateway that allows users to send and receive emails from external communication devices.





MOTOTRBO Text Messaging Services provides an easy to use, intuitive interface (above). A simple configuration enables PC-to-radio Text Messaging (below).



Take advantage of powerful text messaging client features:

- Ability to create, reply to, forward, edit and save messages.
- Send/Receive messages to selected group of radios, an individual radio, a fixed client or a mobile client.
- Provision for messaging with SMTP address (external emails).
- Web-based administration utility for convenient address book management.
- Database management utility to archive, backup and restore message log(s).
- Ability to connect a laptop to any field radio creating a mobile dispatch client.

Standard package Includes:

- Text Messaging server software\*
- Text Messaging client software\*
- Documentation and Utilities CD
- (1) Radio license (allows text messaging to a single user—additional licenses are required for each radio)
- (1) unique serial number

\* Mobile client(s) software is sold separately.



**MOTOROLA**

motorola.com/radiosolutions

MOTOROLA and the Stylized M Logo are registered in the U.S. Patent and Trademark Office. All other product or service names are the property of their registered owners. © Motorola, Inc. 2007  
LE-MTRO-APPS-TM