



# **Accessory Programming Software Installation document**

## **Introduction**

Please read the instructions below before proceeding with the installation package for Accessory Programming Software. Be sure to carefully read all on-screen instructions during the installation.

## **System Installation Requirements**

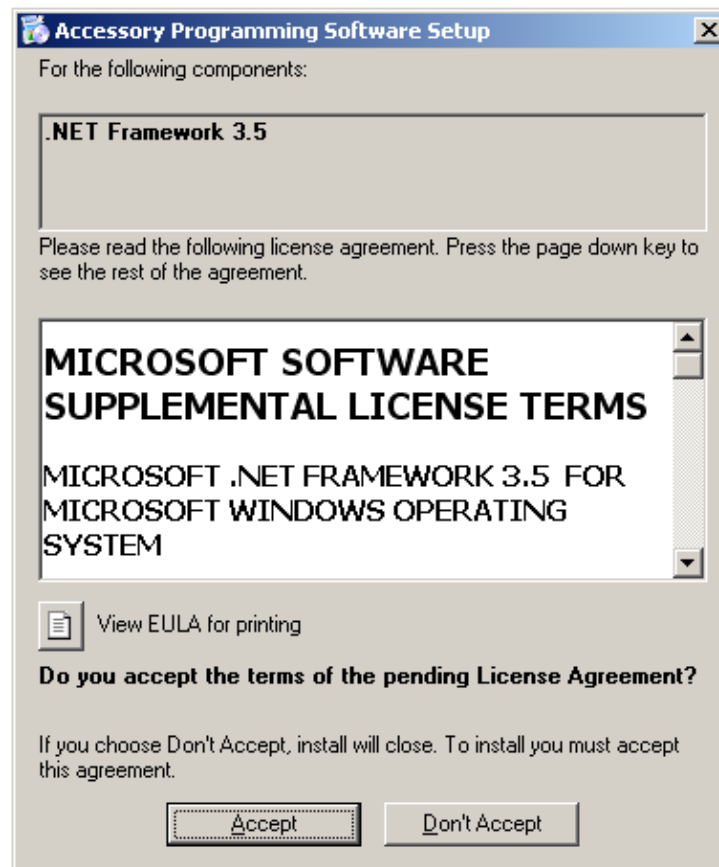
All computers installing the available Accessory Programming Software application must adhere to the following minimum requirements:

### **Operating System Requirements**

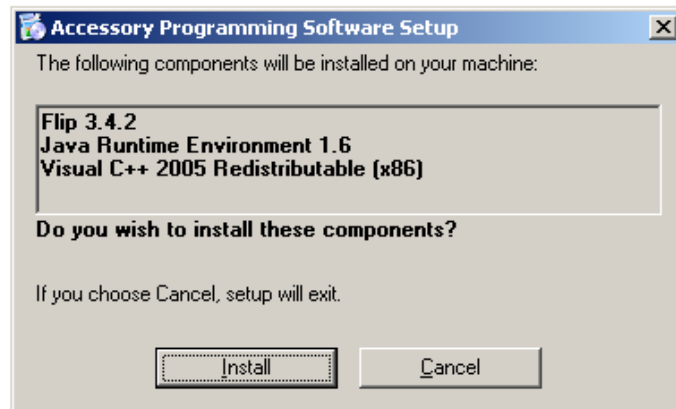
- Windows XP SP3 32-bit
- Windows Vista 32-bit
- Windows 7

## Software Installation:

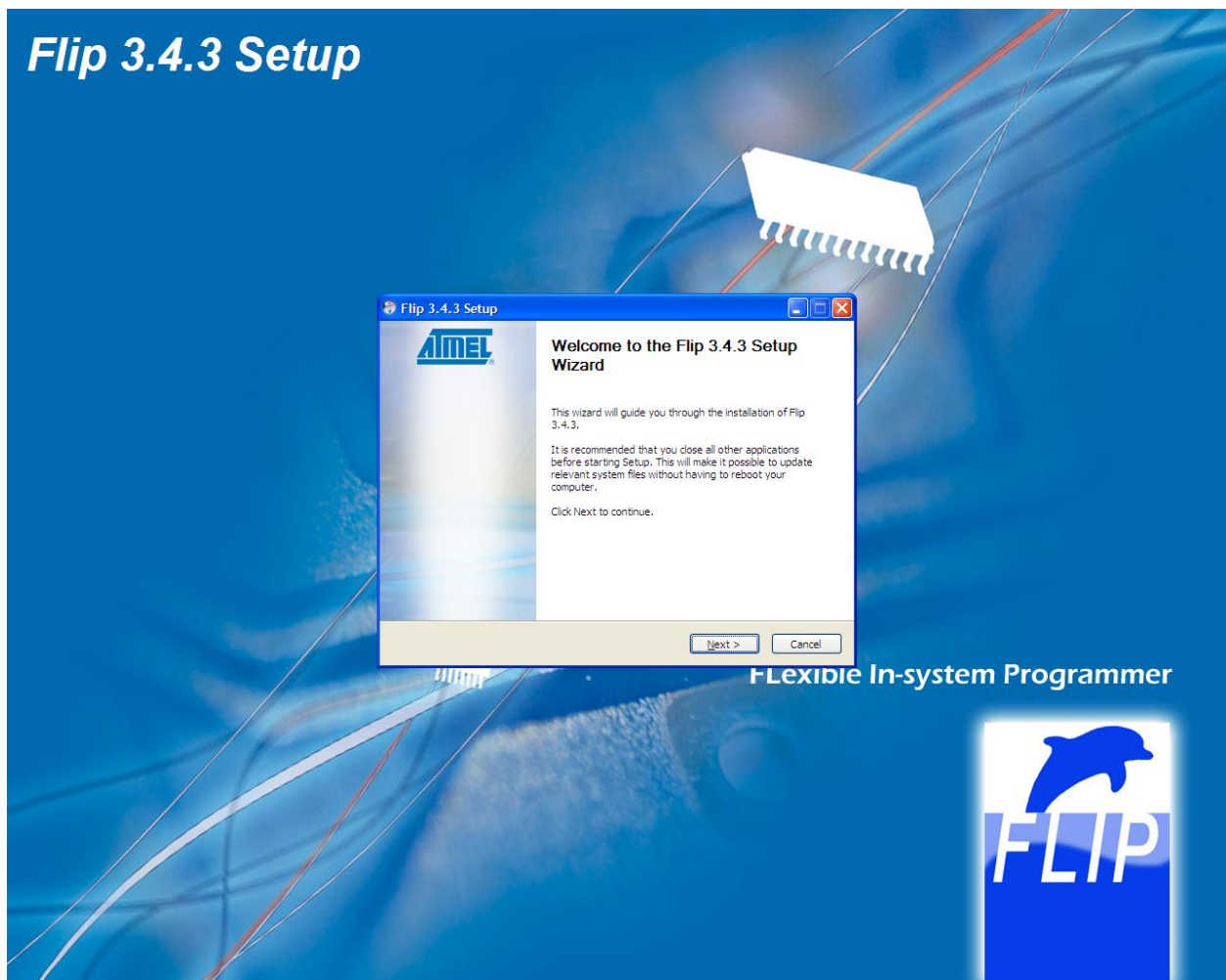
1. Download the APS.zip file from the Motorola Solutions website
2. Extract it to a local drive.
3. Open the folder and click on setup.exe.
4. Then follow the steps below to install the software in the package.
5. The package will install Flip, Java Runtime Environment, .Net framework 3.5 SP1, and Accessory Programming Software.
6. Click Accept



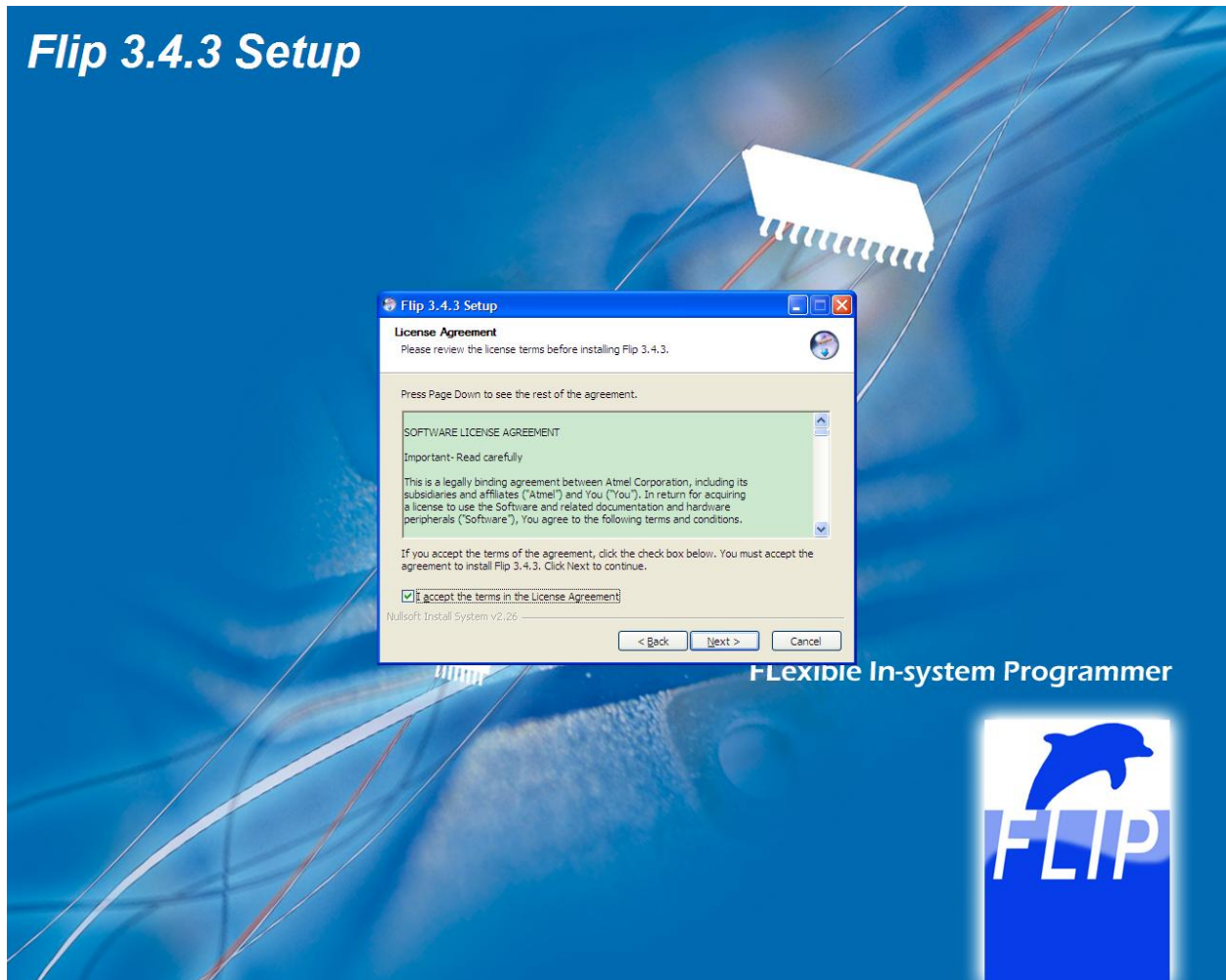
7. Click Install.



8. Click Next



9. Then, accept the license agreement and click Next.



10. Then click Install



11. Click Close

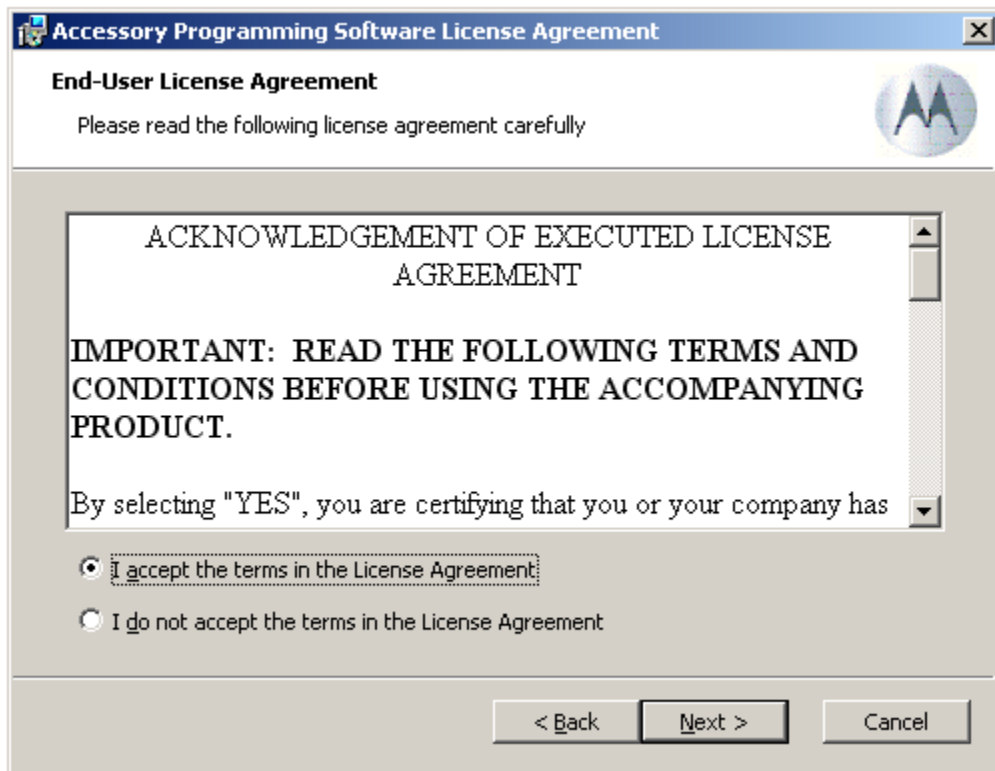


**Note:** If you are using Windows XP SP1/ SP2, the setup will also install the Windows Installer 3.1.

12. Once the additional software is installed, you will be shown the APS installation screen below. Click Next.

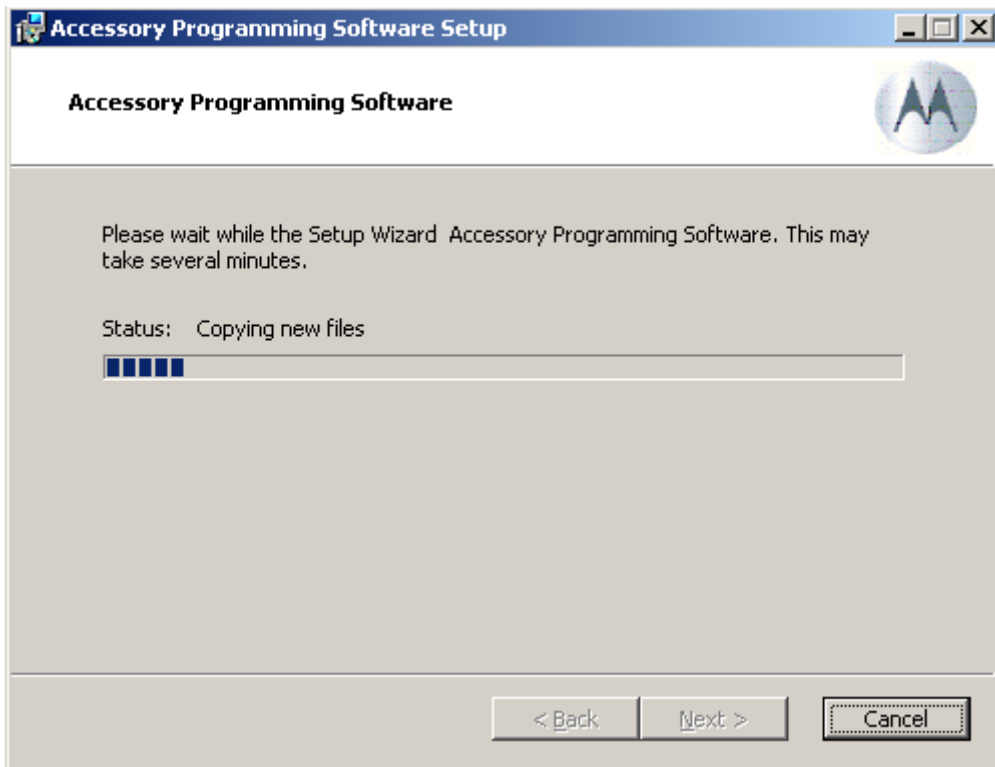
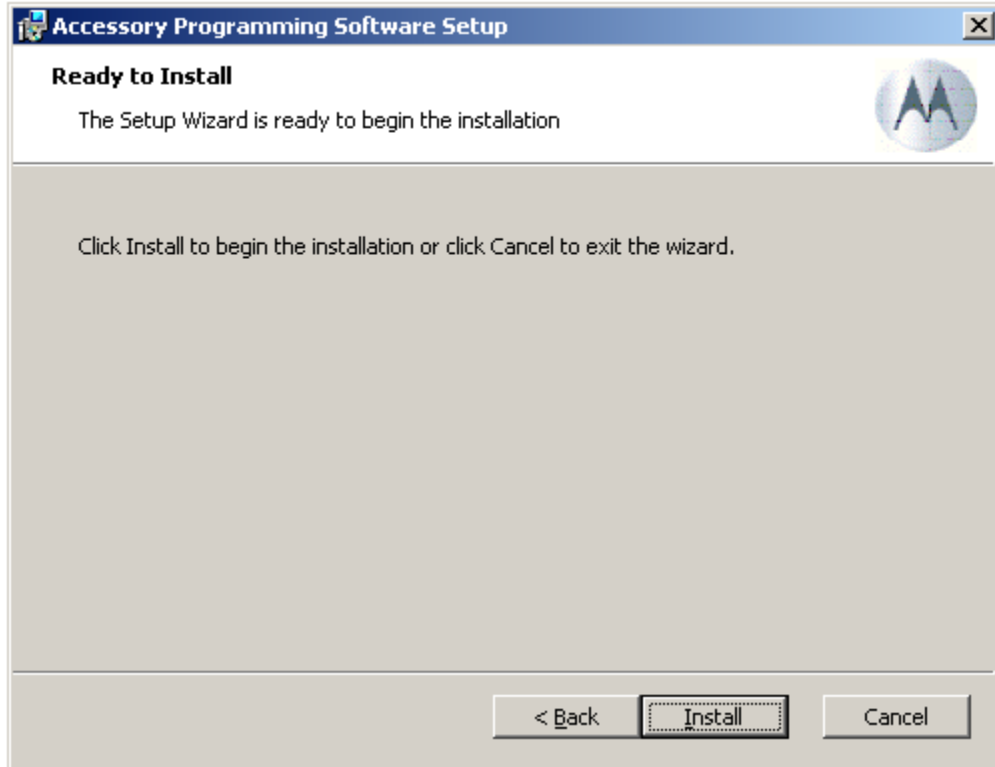


13. Accept the license agreement and click Next.





14. Click Install.



**Note:** For 64-bit operating systems, you will be prompted to install the drivers. If you have User Access Control (UAC) enabled, click “Allow” and then “Install Anyway” to give permission for the drivers to be installed.

15. When complete, click on “Finish”.



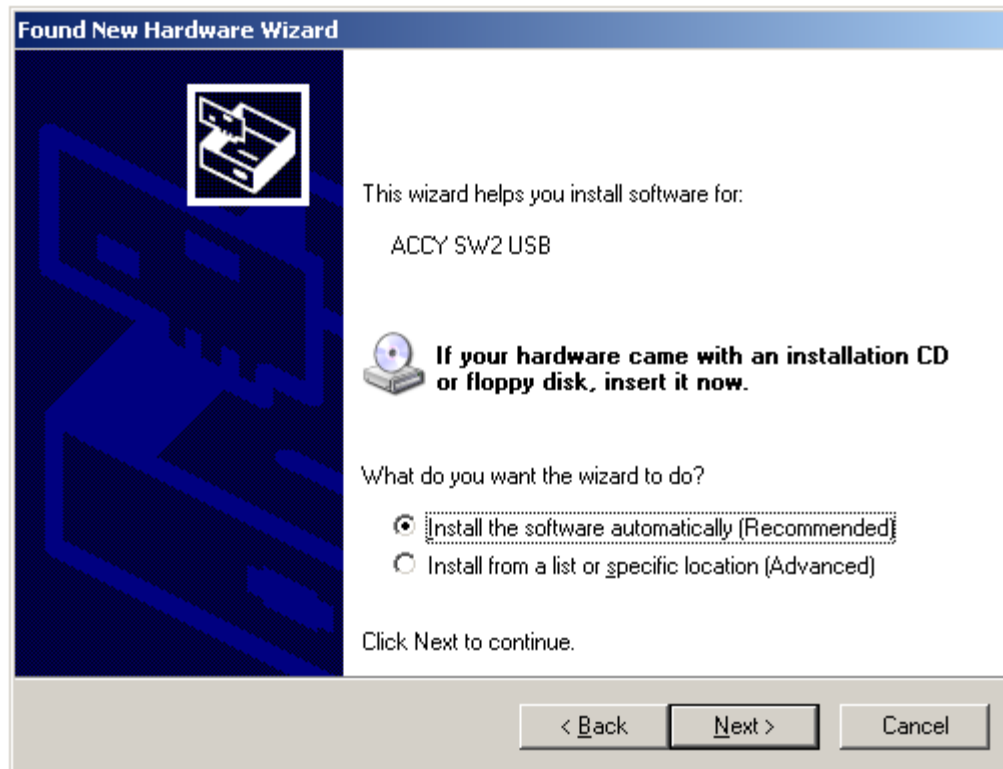
16. Connect the accessories to the computer using a micro USB cable . This is the standard micro USB data cable and can be ordered from Motorola with part number **SKN6238A**.

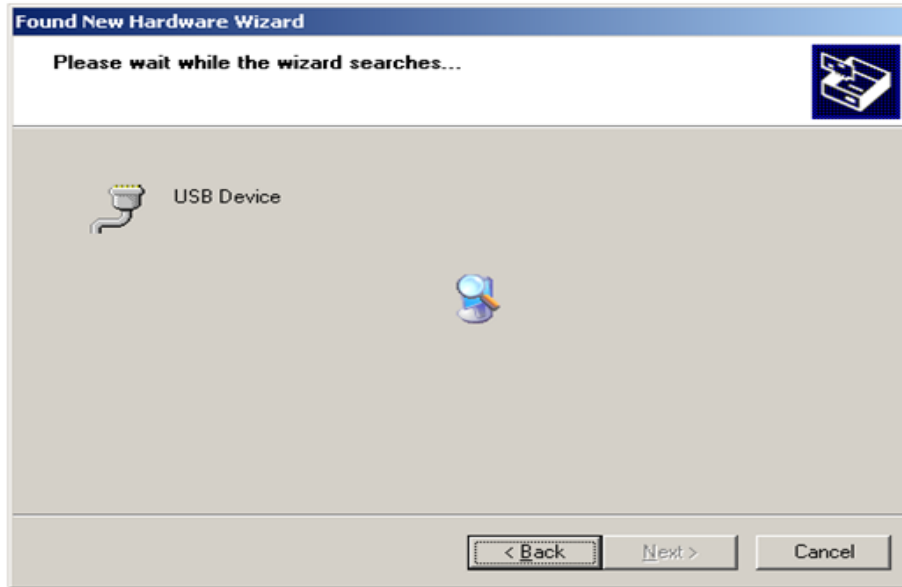




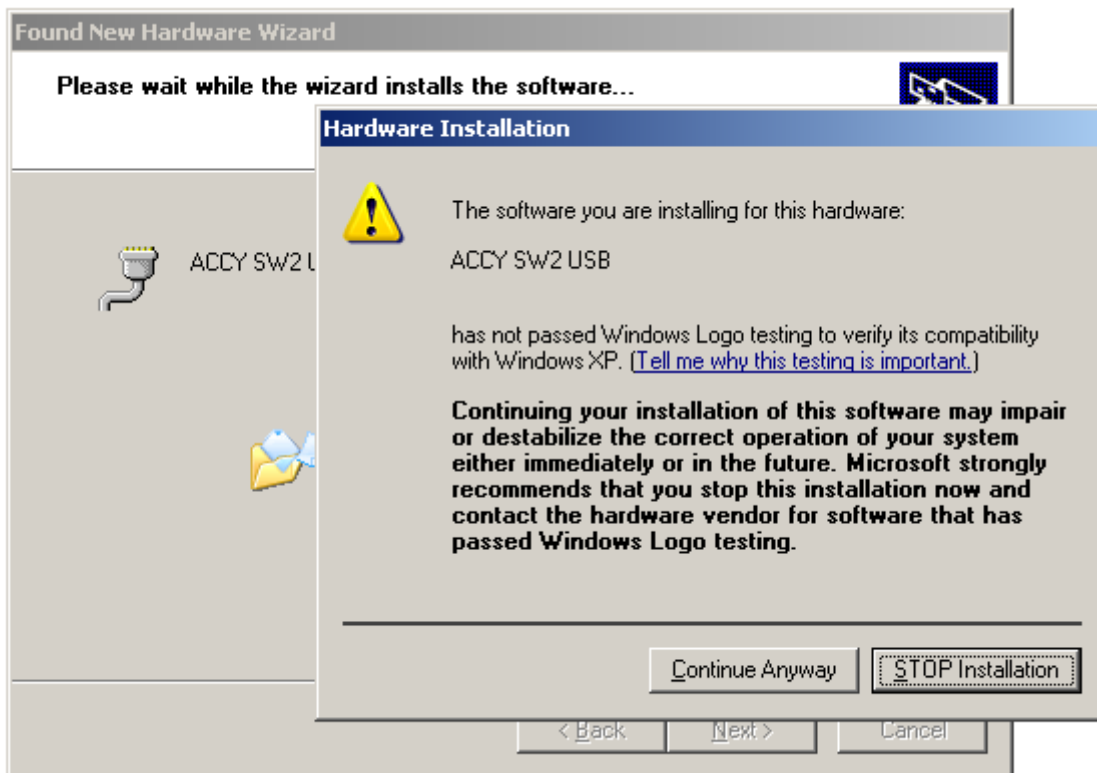
**Note:** The following drivers installation process will happen on Windows XP only. On Windows Vista and Windows 7, drivers are installed automatically.

17. When a port is used for the first time, the application pops up a driver installation window. Select the automatic installation option and click Next.





18. Click Continue Anyway



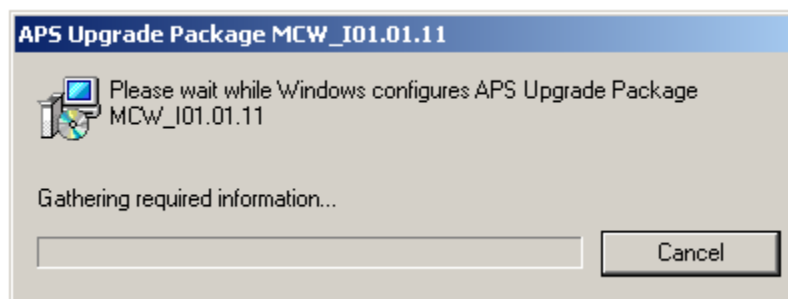
19. Then click Finish



## Upgrade Package Installation:

20. Download the upgrade package from the website. Extract the zip file and click on the msi file to install the upgrade package.

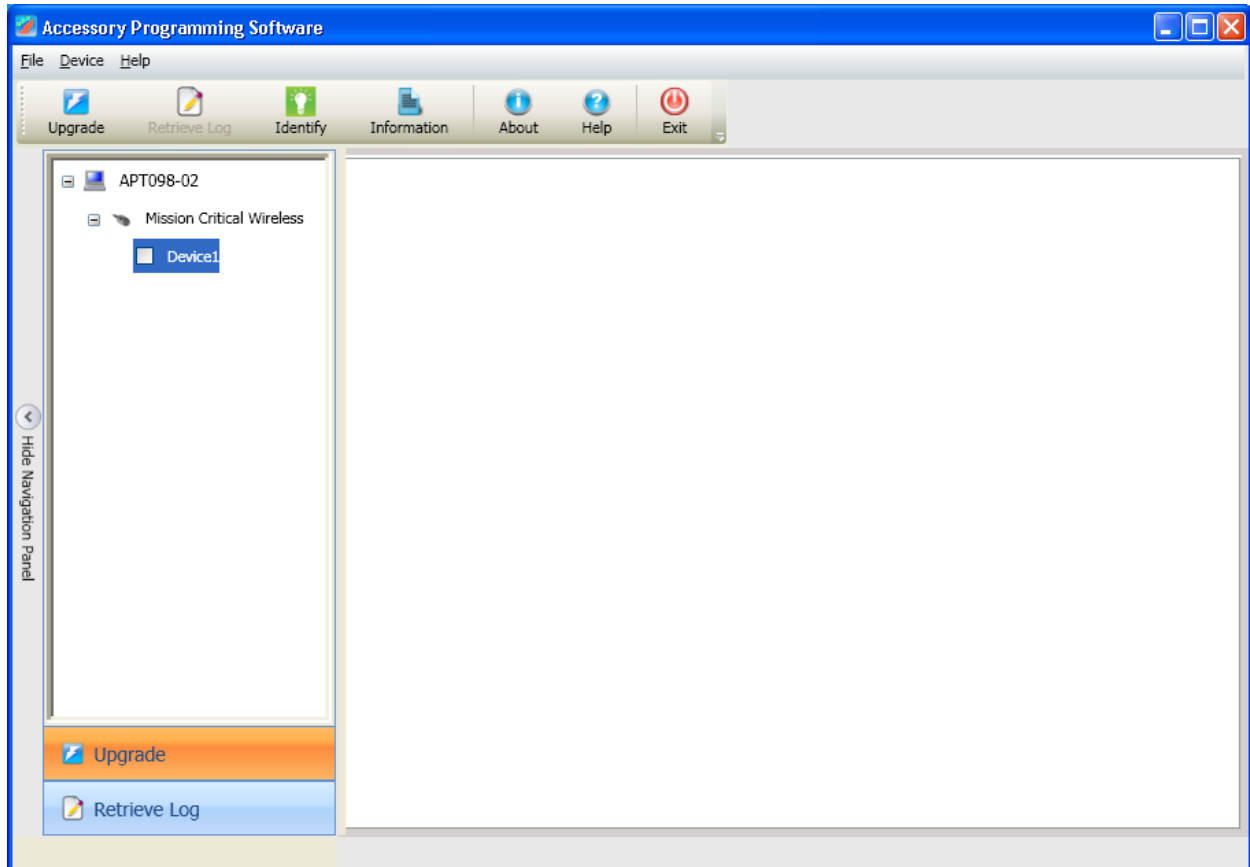
**Note:** Ignore the publisher warning and click Run. The dialog will close automatically when the package is successfully installed.



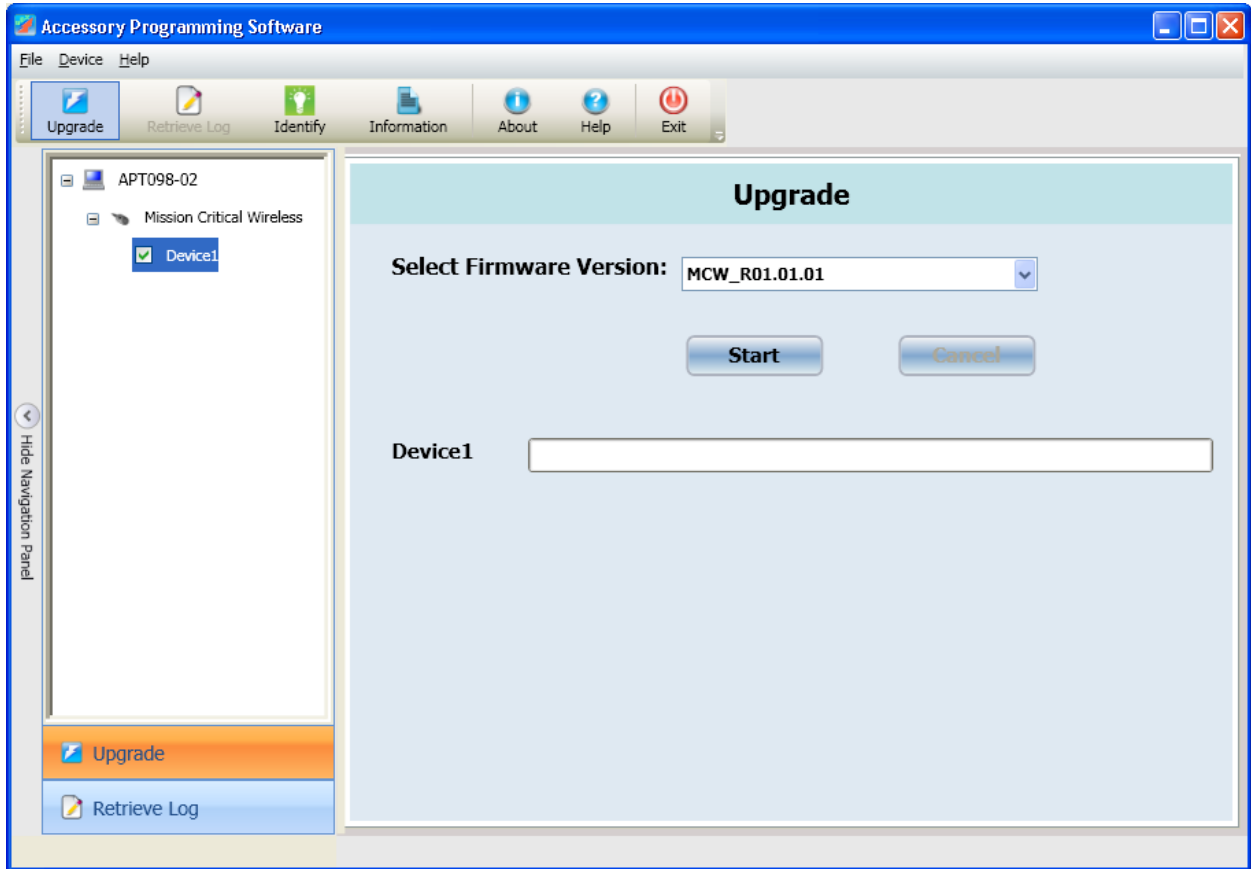


## How to Reprogram Device Firmware:

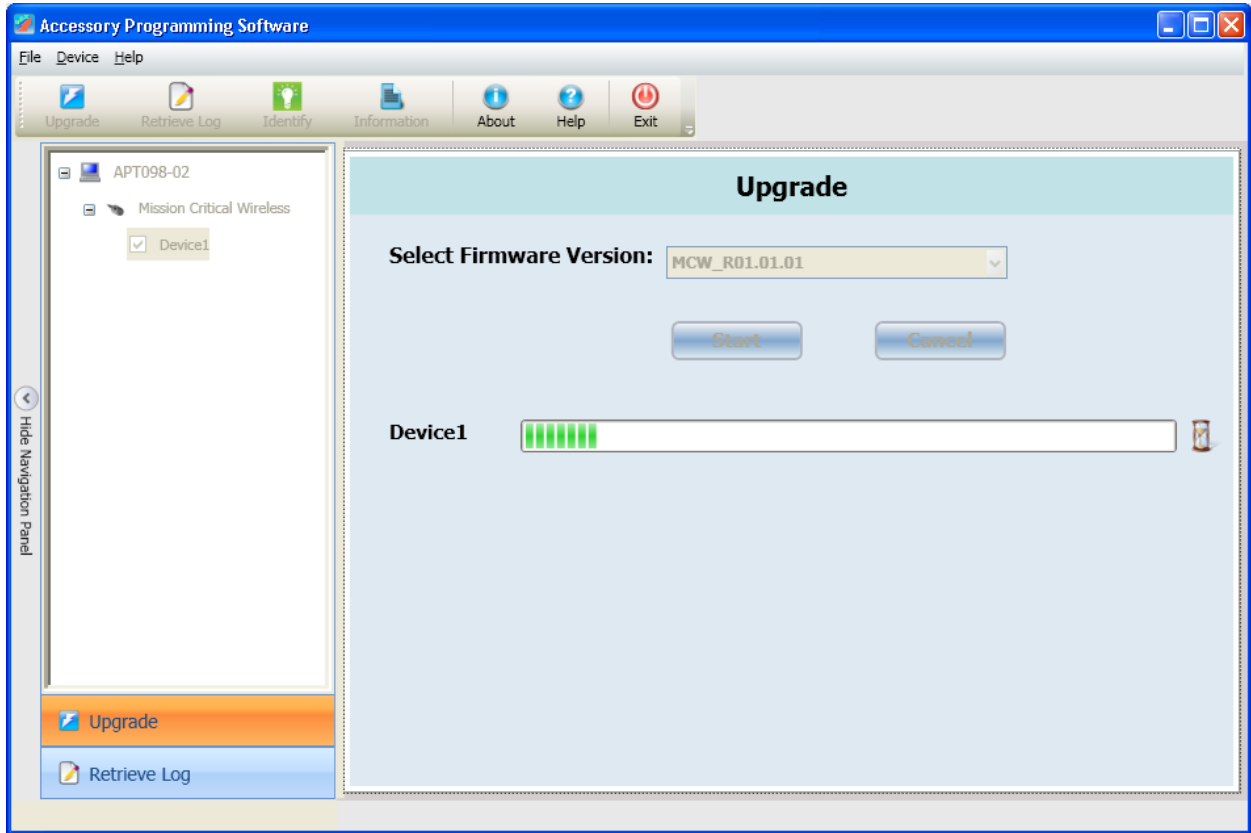
21. Launch APS from “Start->Programs->Motorola Solutions->Accessory Programming Software->APS”. There is also a shortcut on the desktop.



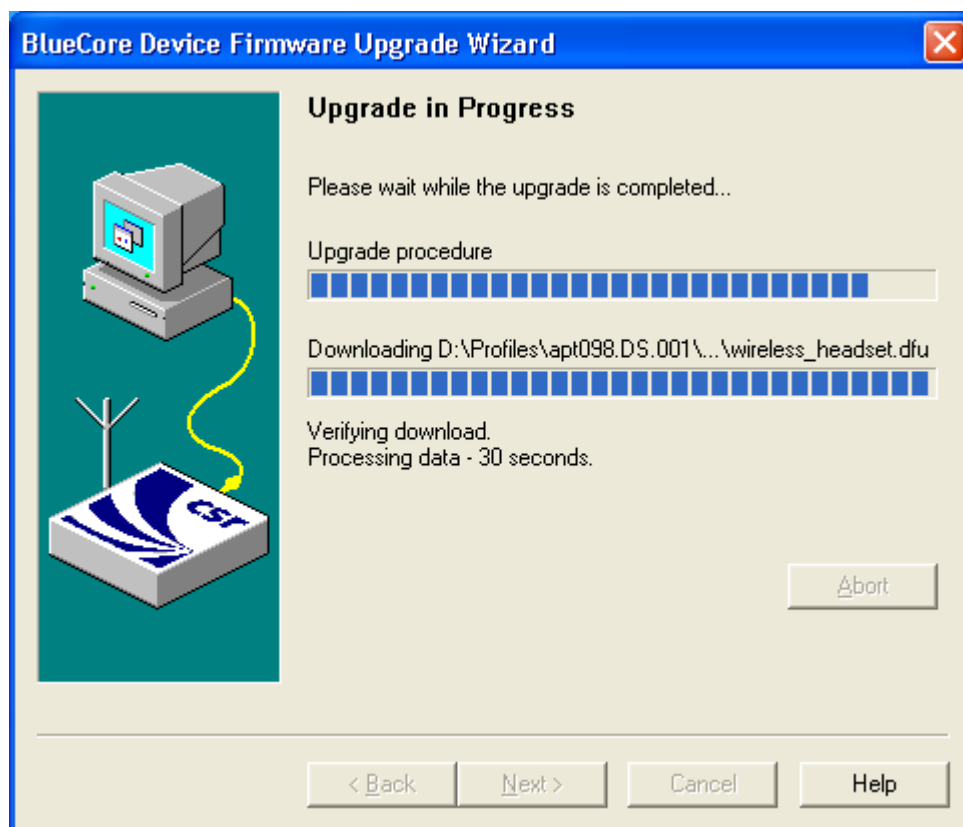
22. Select Device1 and click Upgrade button.



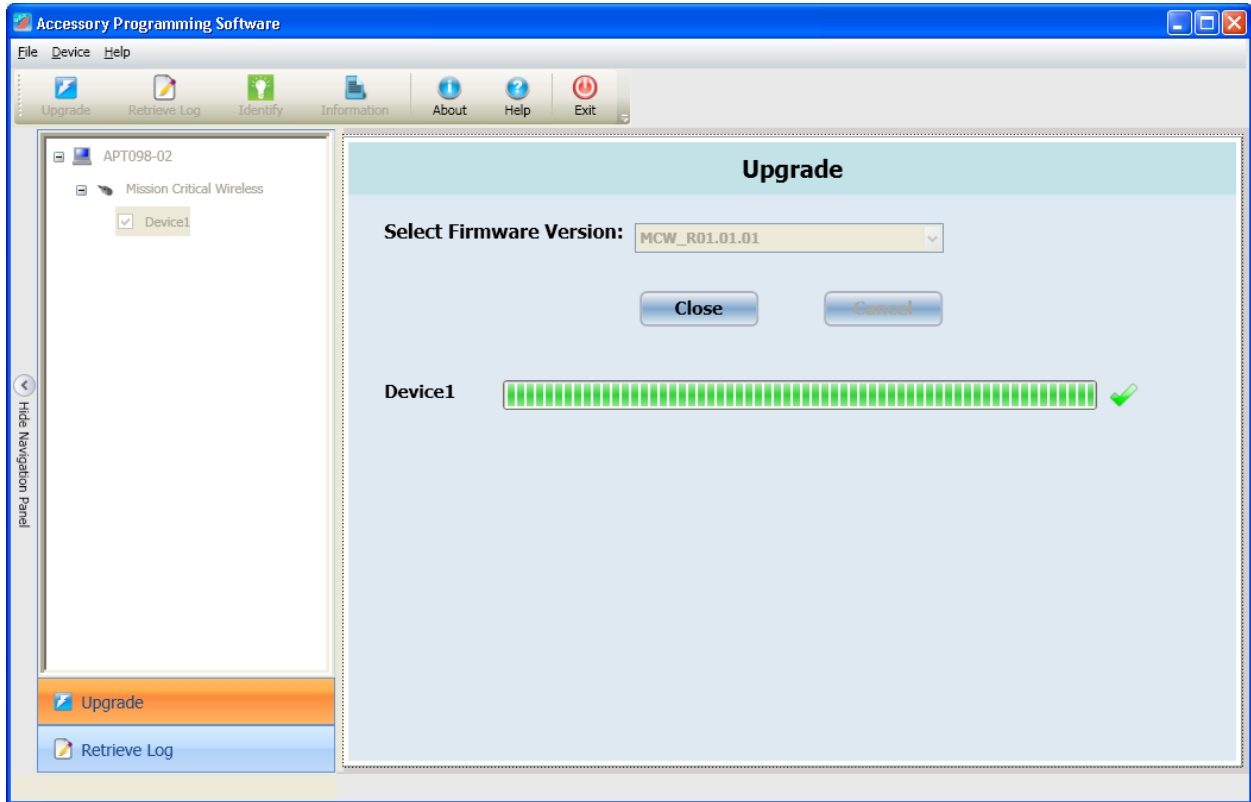
23. Select the proper firmware version and click Start button.



**Note:** The following window will also be displayed during this upgrade process:



24. Click Close when the device is successfully upgraded.



For more information regarding other features supported by the Accessory Programming Software, please refer to the online help for details by clicking the Help button.

