

CASE STUDY: TELDIO TRUFLEET

How the Large University Obtained a Unified View of All Campus Vehicles Using Teldio TruFleet

OVERVIEW

Attracting more than 45,000 students, the university is a large public research institution with a substantial student population. To increase safety and security, and to also allocate resources more effectively, the university needed to have a unified real-time view of all campus vehicles.

THE SOLUTION

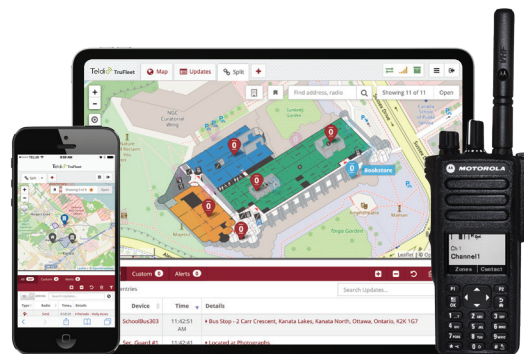
Using Teldio TruFleet, the university enabled location data to be passed through in real-time to their on-site systems to achieve a unified view of all campus vehicles, bringing along many benefits, including:

Safety and Security: Tracking vehicles enhances campus safety and security by allowing administrators to monitor vehicle movements and respond promptly to any emergencies or security incidents.

Efficient Resource Allocation: By tracking campus vehicles, universities can optimize their fleets and improve resource allocation. Administrators can monitor usage patterns, identify underutilized vehicles, and make informed decisions regarding maintenance, repairs, and replacement.

Accountability and Compliance: Vehicle tracking promotes accountability among drivers and encourages responsible behavior. The data can be used to investigate incidents, resolve disputes, and ensure compliance.

Emergency Response: During emergencies or crisis situations, tracking campus vehicles becomes crucial for coordinating response efforts. Whether it's a medical emergency or a campus-wide evacuation, knowing the location of vehicles and their availability can help deploy resources effectively and expedite response times.



THE RESULTS

Tracking campus vehicles plays a vital role in improving campus safety, optimizing resource management, enhancing operational efficiency, and ensuring compliance with policies and regulations. It provides valuable data that helps administrators make informed decisions, streamline processes, and provide better transportation services to the student and teaching community at the university.