

REVOLUTIONIZING FLEET MANAGEMENT



UNLOCK THE FULL
POTENTIAL
OF YOUR
TWO-WAY
RADIO SYSTEM



Why choose neoConneX Fleet Manager?

1

Reliable and Versatile:

NeoTerra products offer unwavering performance across multiple industries, including transportation, manufacturing, utilities, and hospitality, providing tailored solutions to each.

2

Safety and Efficiency:

With features like GPS tracking, emergency broadcast messages, and efficient two-way communication, NeoTerra enhances both safety and operational efficiency.

3

User-friendly and

Cost-effective:

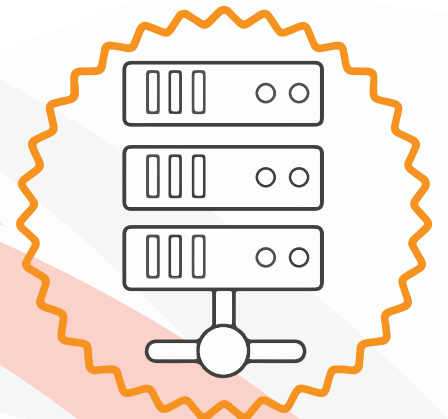
NeoTerra products are competitively priced and designed for easy use, ensuring high value for your investment.

4

Excellent Support and Scalability:

NeoTerra stands out with its high-quality customer service and the ability to scale and adapt as your business grows, ensuring long-term, high-quality fleet management.

Effortless
installation into your
existing rack mount.





Utilities: Provides critical up-time visibility, location and alerting for smooth operations.



Transportation: Real-time GPS tracking for efficient fleet management and safety.



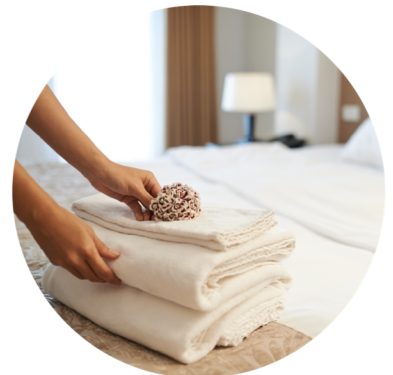
Manufacturing: Ensures shop floor safety and operational efficiency with immediate communication.



Mining: Ensures worker safety and operational efficiency with real-time location tracking and instant communication.



Municipalities: Streamlines logistics with real-time tracking and quick emergency response.

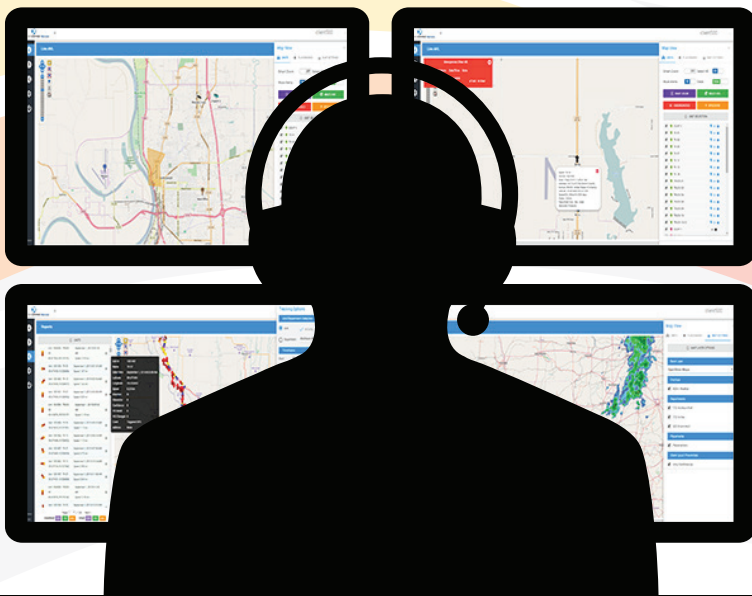


Hospitality: Enhancing guest experiences via rapid response and optimized communication.

WANT THE BEST IN FLEET MANAGEMENT?

NeoTerra SYSTEMS

For effective fleet management and communication, you need more than a basic AVL solution. NeoTerra offers reliable, secure solutions tailored to enhance efficiency. Our products cater to diverse sectors including transportation, manufacturing, utilities, hospitality, and more. NeoTerra is not just a solution, it's a route to better, more streamlined operations. Choose NeoTerra for an upgrade in your fleet management approach.



MOTOROLA SOLUTIONS

PLATINUM CHANNEL PARTNER

Professional and Commercial Radio Application Elite Specialist

ESTABLISHED IN 2003
20 YEARS OF EXCELLENCE
IN TWO-WAY RADIO

BOOK A DEMO TODAY!

WWW.NEOTERRA.CA | SALES@NEOTERRA.CA | 519-940-0088

