

Overview

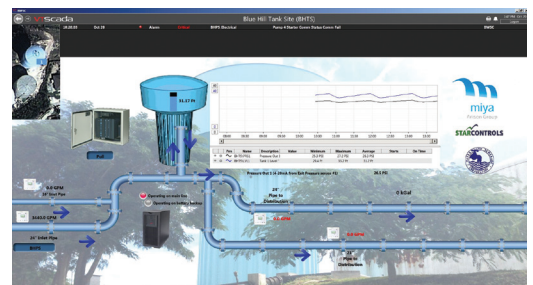
The **Remote Environmental Monitoring System for Water** enables monitoring of different parameters (*) like Flow, Pressure, Chlorine Residual, pH, Turbidity, Rain and Water Levels. It provides continuous remote monitoring needs. Starting from the interface with the sensors, it records data locally and sends it across the cellular network to the User Interface. The **Remote Environmental Monitoring System for Water**, is one of **Star Controls' StaRTU O²TB Solutions**.

StaRTU O²TB (Out-of-the-Box, pre-canned) Solutions

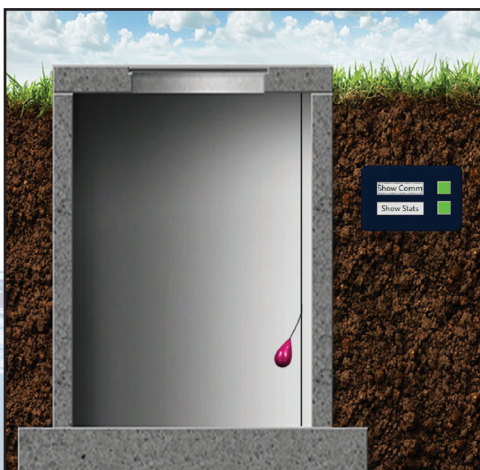
The system enables end-users to deploy, use and maintain flexible monitoring systems, without engineering resources or SCADA experts.

The heart of the system is the **StaRTU[®]** software. **StaRTU[®]** provides a powerful, feature-rich, yet simple-to-use application, designed to significantly enhance the usability, predictability and reliability for operations of the **Remote Environmental Monitoring System**. **StaRTU[®]** provides a set of tools to deploy, change, and troubleshoot the field devices (e.g. RTUs, cellular modems) during the entire life cycle of the system. **StaRTU** increases customers' self-sufficiency, and enables users to keep the system up-to-date.

(*) Sensors are provided by the customer or partners.



The Remote Environmental Monitoring Solution, by Star Controls, is an end-to-end monitoring system.



Monitoring System

From the interface with the sensors, it records data locally in the RTU (Remote Terminal Unit) and sends it across the cellular network to the User Interface. The deployment of the system requires minimum efforts, with no dependency on high cost and scarce SCADA engineering resources. Most importantly, the system enables the customer to calibrate, modify and troubleshoot the field devices (e.g. RTUs, power, sensors, cellular modems) during the entire life cycle of the system. By eliminating or reducing the technical and cost burden, the system presents an affordable monitoring solution, which is currently not available or technically very limited.

Star Controls Environmental Monitoring System is a game changer in the industry. It presents significant reduction in the Total Cost of Ownership (TCO), and enables thousands of customers to gain access to information that they thought was beyond their reach.

THE ENVIRONMENTAL REMOTE MONITORING SYSTEM FOR WATER CAN SUPPORT THE FOLLOWING SENSORS*:

- Pressure
- Flow (pulses from flow meter)
- Chlorine Residual
- pH
- Alkalinity
- Turbidity
- Rain
- Water Level (tanks, canals, rivers, lakes)

* Analog Sensors 4-20mA, please contact **Star Controls** for support of smart sensors (e.g. MODBUS, SDI-12)



THE SYSTEM INCORPORATES BEST OF BREED COMPONENTS:

- RTU – designed and built to withstand harsh environmental conditions, the RTU has ample memory and process power. The RTU uses advanced SCADA protocols (i.e. DNP3.0), to reduce cellular data usage.
- Cellular Data Modem (Gateway) – Sierra Wireless Gateway
- HMI (SCADA) – VTScada software. The most user friendly product, that revolutionize the way end-user can use and modify HMI.

The heart of the solution is **StaRTU®**, a revolutionary, one-of-a-kind software which allows simple configuration. Change and maintain your system through a simple user-friendly interface.

StaRTU® FEATURES:

- Define and change I/O Definitions
- Flash Data Storage
- I/O & Communications Loggers
- Inventory & Version Control Management
- Security
- Support for local Touchscreens



Your Global SCADA & Telecommunications Partner

© Star Controls, Inc. All rights reserved.
StaRTU® a registered trademark of Star Controls, Inc.
v1215

Tel: 1 + 954.603.0491
Fax: 1 + 954.603.0492
sales@star-controls.com

www.STAR-CONTROLS.com

11555 Heron Bay Blvd, Suite #200
Coral Springs, Florida 33076 USA