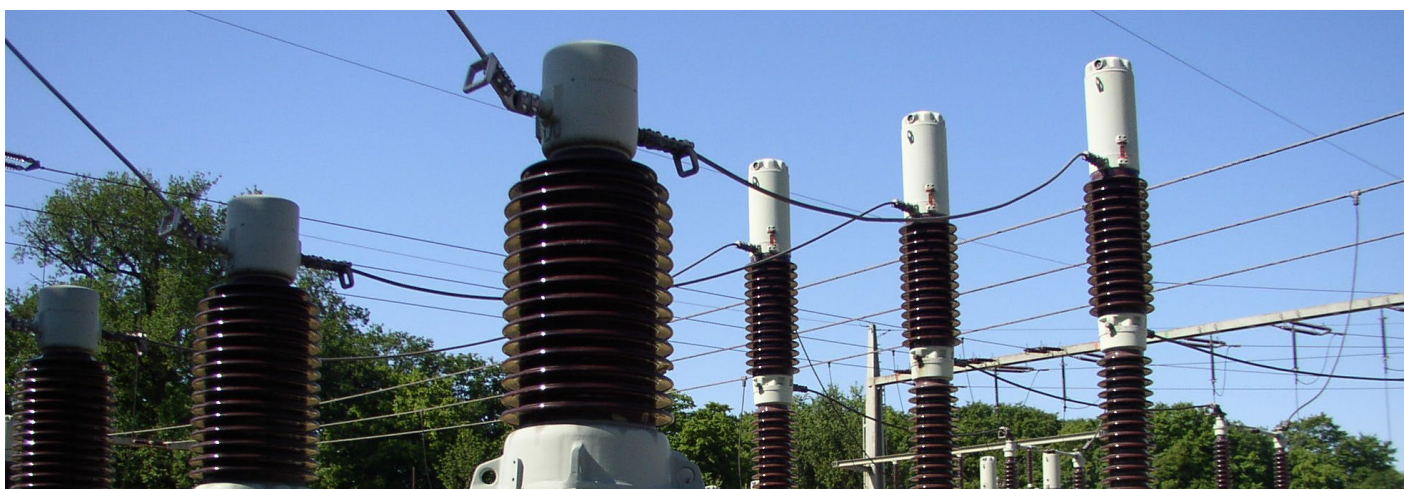




MUNICIPAL UTILITIES IN CENTRAL BADEN CONTINUE TO EXPAND THEIR DIMETRA IP COMPACT TETRA NETWORK

FOR CLEAR COMMUNICATIONS FOR LOCAL UTILITIES AND PUBLIC TRANSPORT PROVIDER



STADTWERKE ETTLINGEN GMBH, STADTWERKE & VERKEHRSBETRIEBE BADEN-BADEN, STADTWERKE KARLSRUHE GMBH, STADTWERKE GAGGENAU, STADTWERKE BÜHL GMBH, STAR.ENERGIEWERKE GMBH & CO. KG

Ettlingen, Baden-Baden, Gaggenau, Bühl, Rastatt and Karlsruhe are important towns or cities in Baden-Württemberg, south-west Germany. Stadtwerke Ettlingen is the municipal utilities and energy company for the city of Ettlingen and the surrounding region. Stadtwerke Ettlingen supplies electricity, gas, water and heat to households and businesses, as well as managing bathing areas and a conference and events centre. Stadtwerke Gaggenau, Stadtwerke Bühl and star.Energiewerke & Co. KG in Rastatt work to the same principles. Stadtwerke Baden-Baden supplies energy, gas, water and heating to both private and business customers in its municipality, as well as offering telecoms solutions and operating public swimming pools. Verkehrsbetriebe Baden-Baden, a subsidiary of Stadtwerke Baden-Baden, operates buses in and around Baden-Baden and its neighbouring villages. Stadtwerke Karlsruhe supplies energy and water to the city. It has over 1,000 employees and works together with partner EnBW Energie Baden-Württemberg AG.

Stadtwerke Ettlingen first deployed a Dimetra IP Compact TETRA digital two-way radio network from Motorola Solutions in 2008, to replace its previous analogue system. Identical radio systems run by Stadtwerke Gaggenau, Bühl and Rastatt, as well as the Motorola network in the nearby spa town of Baden-Baden, were immediately connected. Stadtwerke Karlsruhe also followed suit in 2009, similarly deploying Dimetra IP Compact and MTS base stations from Motorola Solutions. The networks have now all been interconnected into one single system.

All the companies have been working with Motorola Solutions' certified channel partner Blickle & Scherer Kommunikationstechnik for the installation and operation of their TETRA networks. Blickle & Scherer is a well-known, innovative systems provider, with nearly 20 years' experience in digital radio deployments. It specialises in the energy supply, manufacturing, public transport and public safety sectors, but also works with many more professional radio technology users, across a wide and varied customer base.

The TETRA system is very cost-efficient and allows increased functionality, including within the areas of telecontrol and telemetrics. Service and maintenance staff can now communicate clearly and securely, which means jobs can be allocated more efficiently and emergencies can be prioritised. Moreover staff can be extremely productive and deliver an improved service.

CUSTOMER PROFILE

Organisations:

- Stadtwerke Ettlingen GmbH (municipal utilities)
- Stadtwerke & Verkehrsbetriebe Baden-Baden (municipal utilities and public transport company)
- Stadtwerke Karlsruhe GmbH
- Stadtwerke Gaggenau
- Stadtwerke Bühl GmbH
- star.Energiewerke GmbH & Co. KG in Rastatt (energy supplier)

Industry:

- Utilities
- Public Transport

Location:

Germany

Partner:

Blickle & Scherer Kommunikationstechnik

Motorola Solutions Products:

- Dimetra IP Compact
- MTS2 Base Stations
- MTP850 and MTH800 TETRA Portable Radios
- MTM800e and MTM5000 Series TETRA Mobile Radios

CASE STUDY

DIMETRA IP TETRA FOR PUBLIC SECTOR, GERMANY

“By connecting to Stadtwerke Ettlingen’s TETRA digital radio network, we have been able to introduce a secure, enterprise-class communications platform at a low cost for both the utilities and public transport sides of our business. Having reliable, secure, clear communication channels in place means our staff can work more productively and respond much quicker to customer needs.”

Franz Schaub Project Manager, Stadtwerke Baden-Baden



CHALLENGE

These energy providers in Central Baden previously all had separate analogue private mobile radio (PMR) systems in place, which lacked functionality, security features and the reliability of a digital network. They wanted to upgrade to a digital radio system to address these issues. Moreover the organisations were looking for a network which could be linked one to the other, to drive cost savings and efficiencies. They knew that, if their maintenance staff across the area could freely communicate and jobs could be dynamically allocated, they would all be able to increase the productivity of their mobile workforce and deliver better customer service.

SOLUTION

Stadtwerke Ettlingen was the first to move to a high performance and scalable Dimetra IP Compact system from Motorola Solutions. Working together with Blickle & Scherer, it installed MTS2 base stations in its service area for a secure, high performance network, independent of telephone networks, which can fail in an emergency. Its mobile workforce uses MTP850 and MTH800 TETRA portable radios and MTM800e and MTM5000 series TETRA mobile radios to communicate via voice or data.

Following the success of the deployment, the TETRA network was connected up to the system in the nearby city of Karlsruhe, where Blickle & Scherer deployed additional MTS2 base stations. The whole network now covers an extensive area of over 900 km². Being connected to Stadtwerke Ettlingen’s TETRA digital radio network, the respective municipal utilities and public transport companies in Baden-Baden, Gaggenau, Bühl and Rastatt were able to replace their former analogue private mobile radio systems with a secure, group communication solution at a very reasonable cost. The TETRA system allows employees to communicate securely and at any time, from any point within the network coverage zone. And the companies can coordinate their service staff more efficiently. In the future, the local transport companies of Baden-Baden may also use the new technology to control their bus routes.



BENEFIT

The Dimetra IP Compact platform from Motorola Solutions delivers a high-performance TETRA system with end-to-end IP architecture, which can be adapted to the needs of the users. Employees can now communicate reliably with each other across the area, to ensure efficient deployment of resources and a reduced response time. This has led to improved staff productivity and increased customer service. User feedback has been excellent.

The network offers completely secure, wireless communication, independent of public telephone networks. And the modern, future-proof technology is exceptionally flexible, to allow for an extension of the system to meet future needs, such as to offer more extensive telecontrol and telemetry functionality.

Applications:

- Voice and data communications for local utilities companies
- Voice and data communications for local transport company
- Independent communications platform

Benefits:

- Reduced incident response times, improved staff efficiency and better staff coordination
- Secure communication, independent of public telephone networks
- End-to-end IP architecture that can be adapted to user needs and ensures optimum call availability
- Extensive telecontrol and telemetry functions
- Possibility to further extend the system to meet future needs

For more information on Motorola Solutions’ Dimetra IP TETRA, please visit us on the web at www.motorolasolutions.com/tetra

MOTOROLA, MOTO, MOTOROLA SOLUTIONS and the Stylized M Logo are trademarks or registered trademarks of Motorola Trademark Holdings, LLC and are used under license. All other trademarks are the property of their respective owners. ©2016 Motorola Solutions Inc. All rights reserved.