



IMPRES[™] Battery Fleet Management Installation Guide

FEBRUARY 2022

© 2022 Motorola Solutions, Inc. All rights reserved



MN007473A01-AB

Intellectual Property and Regulatory Notices

Copyrights

The Motorola Solutions products described in this document may include copyrighted Motorola Solutions computer programs. Laws in the United States and other countries preserve for Motorola Solutions certain exclusive rights for copyrighted computer programs. Accordingly, any copyrighted Motorola Solutions computer programs contained in the Motorola Solutions products described in this document may not be copied or reproduced in any manner without the express written permission of Motorola Solutions.

No part of this document may be reproduced, transmitted, stored in a retrieval system, or translated into any language or computer language, in any form or by any means, without the prior written permission of Motorola Solutions, Inc.

Trademarks

MOTOROLA, MOTO, MOTOROLA SOLUTIONS, and the Stylized M Logo are trademarks or registered trademarks of Motorola Trademark Holdings, LLC and are used under license. All other trademarks are the property of their respective owners.

License Rights

The purchase of Motorola Solutions products shall not be deemed to grant either directly or by implication, estoppel or otherwise, any license under the copyrights, patents or patent applications of Motorola Solutions, except for the normal non-exclusive, royalty-free license to use that arises by operation of law in the sale of a product.

Open Source Content

This product may contain Open Source software used under license. Refer to the product installation media for full Open Source Legal Notices and Attribution content.

European Union (EU) and United Kingdom (UK) Waste of Electrical and Electronic Equipment (WEEE) Directive



— The European Union's WEEE directive and the UK's WEEE regulation require that products sold into EU countries and the UK must have the crossed-out wheeled bin label on the product (or the package in some cases). As defined by the WEEE directive, this crossed-out wheeled bin label means that customers and end-users in EU and UK countries should not dispose of electronic and electrical equipment or accessories in household waste.

Customers or end-users in EU and UK countries should contact their local equipment supplier representative or service centre for information about the waste collection system in their country.

Disclaimer

Please note that certain features, facilities, and capabilities described in this document may not be applicable to or licensed for use on a specific system, or may be dependent upon the characteristics of a specific mobile subscriber unit or configuration of certain parameters. Please refer to your Motorola Solutions contact for further information.

© 2022 Motorola Solutions, Inc. All Rights Reserved

Contact Us

The Centralized Managed Support Operations (CMSO) is the primary contact for technical support included in your organization's service agreement with Motorola Solutions.

Service agreement customers should be sure to call the CMSO in all situations listed under Customer Responsibilities in their agreement, such as:

- Before reloading software
- To confirm troubleshooting results and analysis before taking action

Your organization received support phone numbers and other contact information appropriate for your geographic region and service agreement. Use that contact information for the most efficient response. However, if needed, you can also find general support contact information on the Motorola Solutions website, by following these steps:

- 1 Enter motorolasolutions.com in your browser.
- 2 Ensure that your organization's country or region is displayed on the page. Clicking or tapping the name of the region provides a way to change it.
- 3 Select "Support" on the motorolasolutions.com page.

Comments

Send questions and comments regarding user documentation to documentation@motorolasolutions.com.

Provide the following information when reporting a documentation error:

- The document title and part number
- The page number or title of the section with the error
- A description of the error

Motorola Solutions offers various courses designed to assist in learning about the system. For information, go to <https://learning.motorolasolutions.com> to view the current course offerings and technology paths.

Read Me First

This document provides information necessary to install the IMPRES Battery Fleet Management application, the requirements and prerequisites for installation, and the configuration of the application. Some of the configurations are optional and may be skipped.

Notations Used in This Manual

Throughout the text in this publication, you will notice the use of warning, caution, and notice notations. These notations are used to emphasize that safety hazards exist, and due care must be taken and observed.



WARNING: WARNING indicates a potentially hazardous situation which, if not avoided, could result in death or injury.



CAUTION: CAUTION indicates a potentially hazardous situation which, if not avoided, might result in equipment damage.



NOTE: NOTICE indicates an operational procedure, practice, or condition that is essential to emphasize.

Related Publications

The following list contains part numbers and titles of related publications.

- MN007471A01, *IMPRES™ Battery Fleet Management Ordering Guide*
- MN007473A01, *IMPRES™ Battery Fleet Management Installation Manual*
- MN007495A01, *IMPRES™ Battery Fleet Management User Guide*
- MN007501A01, *IMPRES™ Battery Fleet Management Troubleshooting Guide and External Software and Component Configuration Guide*
- MN008435A01, *IMPRES™ Battery Fleet Management WEB Interface User Guide for Release 4.0*
- 6880309T12, *MOTOTRBO System Planner*
- MN008144A01, *Intelligent Middleware Installation and Configuration Manual 5.2.4*
- MN005566A01, *Intelligent Middleware Installation and Configuration 5.2 and 5.2.2*
- MN008145A01, *Intelligent Middleware Feature Manual 5.2.4*

Contents

Intellectual Property and Regulatory Notices.....	2
Contact Us.....	3
Read Me First.....	4
Notations Used in This Manual.....	5
Related Publications.....	6
Chapter 1: Installation of IMPRES Battery Fleet Management Application.....	8
1.1 System Installation Requirements.....	8
1.2 Pre-Installation Preparation.....	9
1.3 Installing .NET Framework 4.0 and 4.5 (If Requested).....	10
1.4 Installing SQL Server Express 2012 (If Requested).....	12
1.5 Installing MOTOTRBO Radio Driver	14
1.6 Installing IMPRES Gen 2 Drivers	17
1.7 Installing IMPRES Battery Fleet Management.....	19
Chapter 2: Feature Configuration.....	25
2.1 Activation of IMPRES Battery Fleet Management Application.....	25
2.1.1 Performing Online Activation.....	25
2.1.2 Performing Offline Activation.....	27
2.2 Setting up Server/Client Environment.....	29
2.2.1 Setting Up Server PC.....	29
2.2.2 Setting Up Client PC.....	29
2.3 Enabling MOTOTRBO Radio Network Feature.....	30
2.4 IMPRES Battery Fleet Management UNS Configuration.....	31
2.4.1 Configuring Battery Fleet Management.....	33
Chapter 3: Installation of IMPRES Devices.....	36
3.1 Installing a Mobile Radio as a Data Gateway.....	36
3.2 Installing IMPRES 2 Charger.....	38

Chapter 1

Installation of IMPRES Battery Fleet Management Application

This chapter describes the software installations for the IMPRES battery Fleet Management Application.

1.1

System Installation Requirements

Installing the available IMPRES Battery Fleet Management (BFM) application in computers must meet the following minimum requirements.



NOTE: IMPRES Battery Fleet Management 4.0 Web Services depends on Windows Internet Information Services (IIS). The machine to be installed on should not utilize some other web server or contain other web applications that are utilizing the same ports as IIS. The BFM Web Application or Node Services uses Port 5000.

Table 1: Computer Systems Minimum Requirements

Requirements	Description
Operating system requirements	Supported Microsoft®Windows® Operating System
NOTE: IMPRES Battery Fleet Management is required to run on English language operating systems from the list. Running the application on a non-English operating system may cause the application malfunction.	Personal Computer Versions
	Microsoft® Windows® 10 Enterprise
	Microsoft® Windows® 10 Pro
	Microsoft® Windows® 8.1 Pro
	Server Versions
	Microsoft® Windows® Server 2012 Standard
	Microsoft® Windows® Server 2016 Standard
Hardware minimum requirements	Server Hardware Minimum Requirements
NOTE: IMPRES Battery Fleet Management can either be installed on a client computer or a server computer. Although the installation package is the same for client and server computers, the hardware installation requirements are different.	<ul style="list-style-type: none"> • i5 generation 8 or equivalent processor • 10 GB of hard disk space • 2 GB RAM
	Client Hardware Minimum Requirements
	<ul style="list-style-type: none"> • i5 generation 8 or equivalent processor • 1 USB port • 10 GB of hard disk space • 1 GB RAM
Software minimum requirements	Microsoft® Edge or Google Chrome
Access rights	You must have Administrator rights on the target computer to proceed with the installation

Table 2: ASTRO System Minimum Requirements

Requirements	Description
Intelligent Middleware (IMW)	IMW version 5.2.1 with all outstanding patches applied
	IMW version 5.2.2
	IMW version 5.2.3
	IMW “presence” license - one per subscriber
	IMW “context” (sensor) license - one per subscriber
APX Portable Radio Software Version	7.18.5 or later Codeplug field change to enable sensor measurement reporting, Data wide field
ASTRO System Version	7.18.5 or later

Table 3: MotoTRBO System Minimum Requirements

Requirements	Description
Motorola Network Interface Service (MNIS) Deployments	<ul style="list-style-type: none"> • Single Site • IP Site Connect • Capacity Plus (Single or Multi Site) • Linked Capacity Plus • Capacity Max
Control Station Configurations	<ul style="list-style-type: none"> • Direct Mode • Single Site • IP Site Connect • Capacity Plus (Single or Multi Site) • Linked Capacity Plus • Capacity Max

1.2

Pre-Installation Preparation

Prerequisites: Unplug any IMPRES devices that are connected to your computer and exit all the programs running on your computer.

Procedure:

Re-installation

- 1 If re-installation is needed, click **Start**→**Settings**→**Control Panel**→**Add or Remove Programs**.

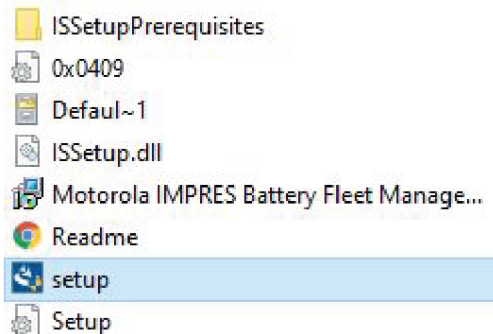



NOTE: Remove previous installation is required.

- 2 Highlight **Motorola IMPRES Battery Fleet Management** from currently installed programs and click **Remove** to uninstall the old version of Fleet Management software.

Performing Installation

- 3 To install the application, download the application zip file from MOL or Motorola Solutions website to your local computer and unzip the file.
- 4 To start the application, double-click the **setup.exe** application file.




 **NOTE:** There is prerequisite software that must be installed onto your computer before installing the Battery Fleet Management application. You will be prompted to install the Microsoft .Net Framework version 4.0, 4.5, and/or Microsoft SQL Server Express 2012 before installing IMPRES Battery Fleet Management application.

- 5 To install the prerequisites software, click **Install** when prompted during the installation. Reboot is required after the .NET Framework installation.

1.3

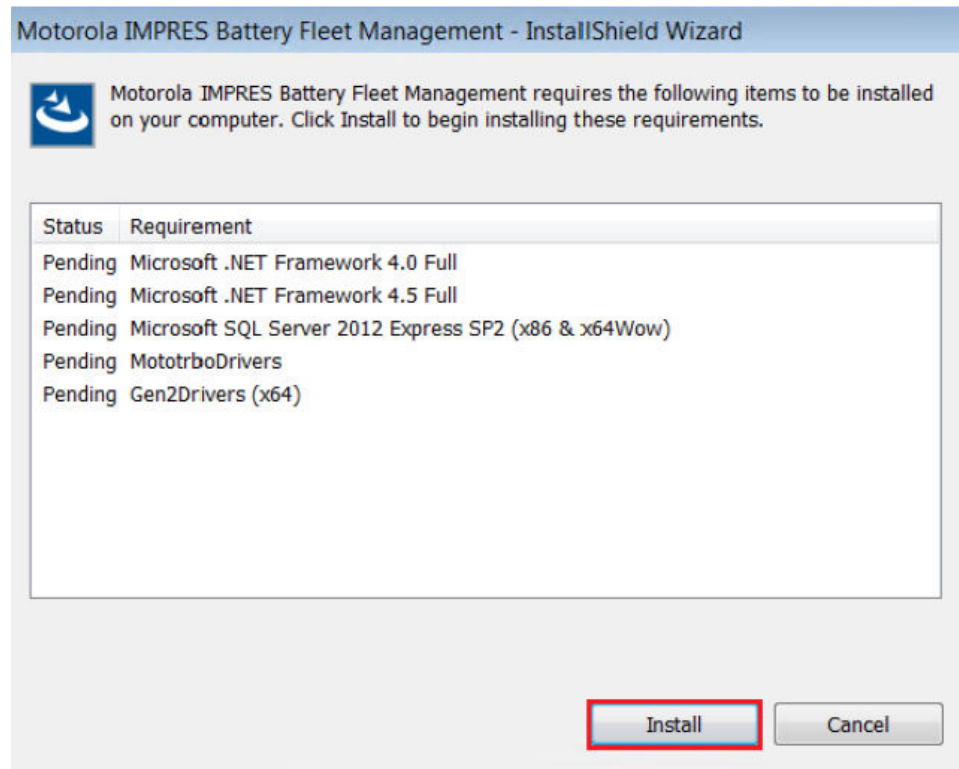
Installing .NET Framework 4.0 and 4.5 (If Requested)

When and where to use:

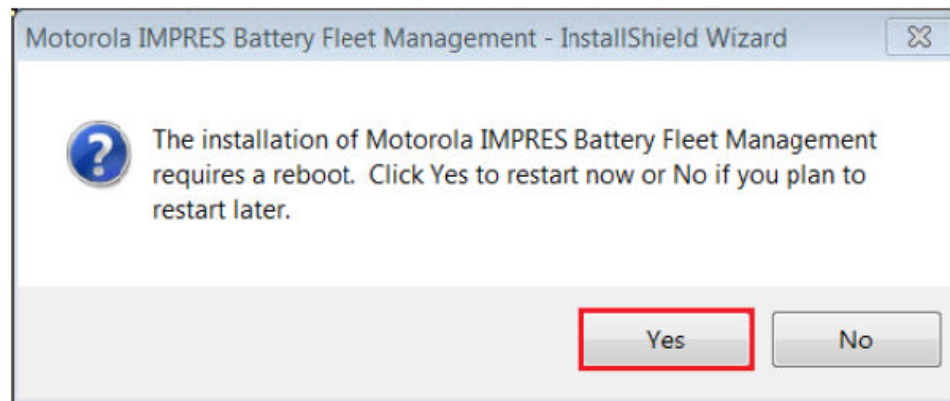
 **NOTE:** This installation is only needed if your computer requests for it.

Procedure:

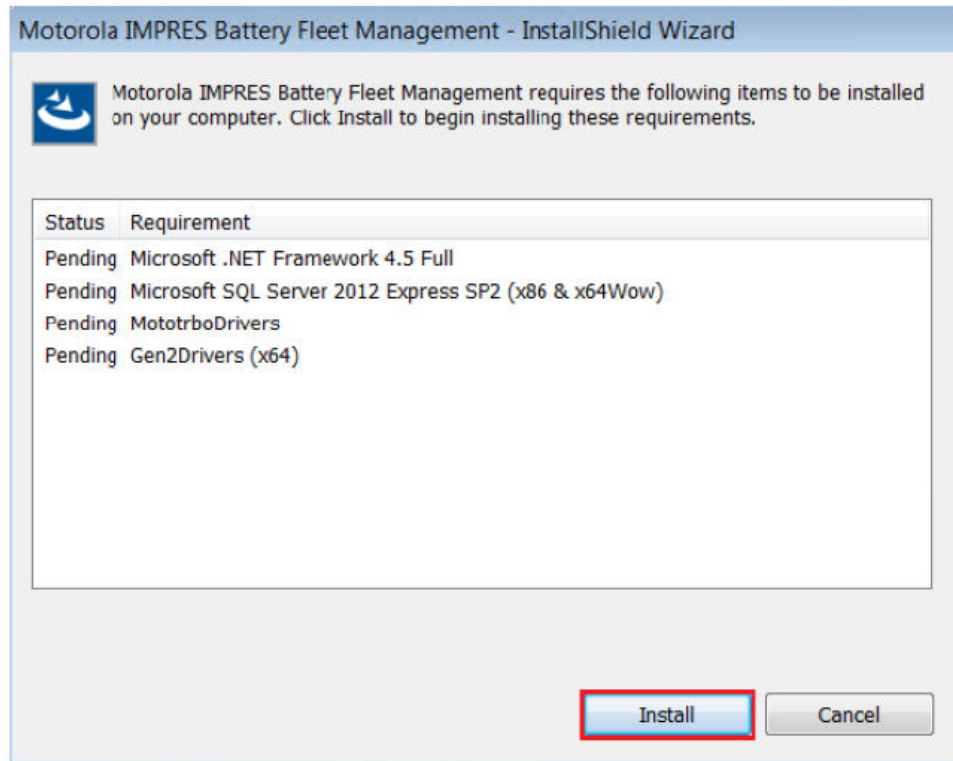
- 1 To install Microsoft .NET Framework 4.0, click on **Install** to continue the installation.



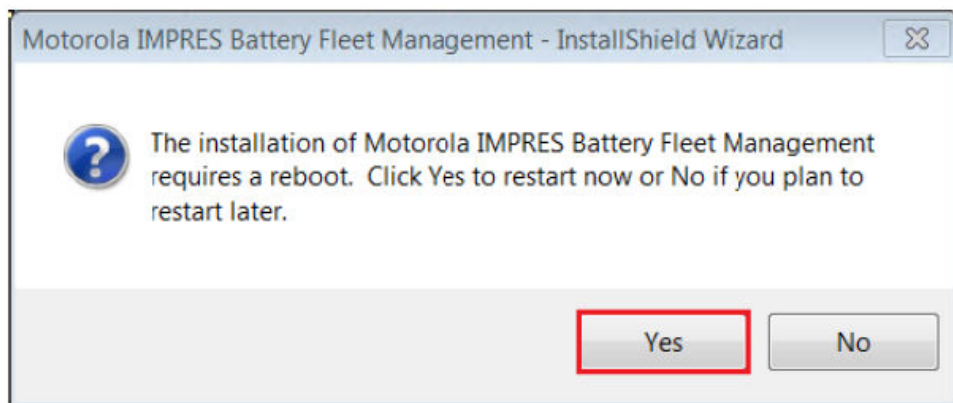
- 2 To reboot your computer, click on **Yes** to restart after the .NET Framework 4.0 installation.



- 3 To install Microsoft .NET Framework 4.5, click on **Install** to continue the installation.



- 4 To reboot your computer, click on **Yes** to restart after the .NET Framework 4.5 installation.



1.4

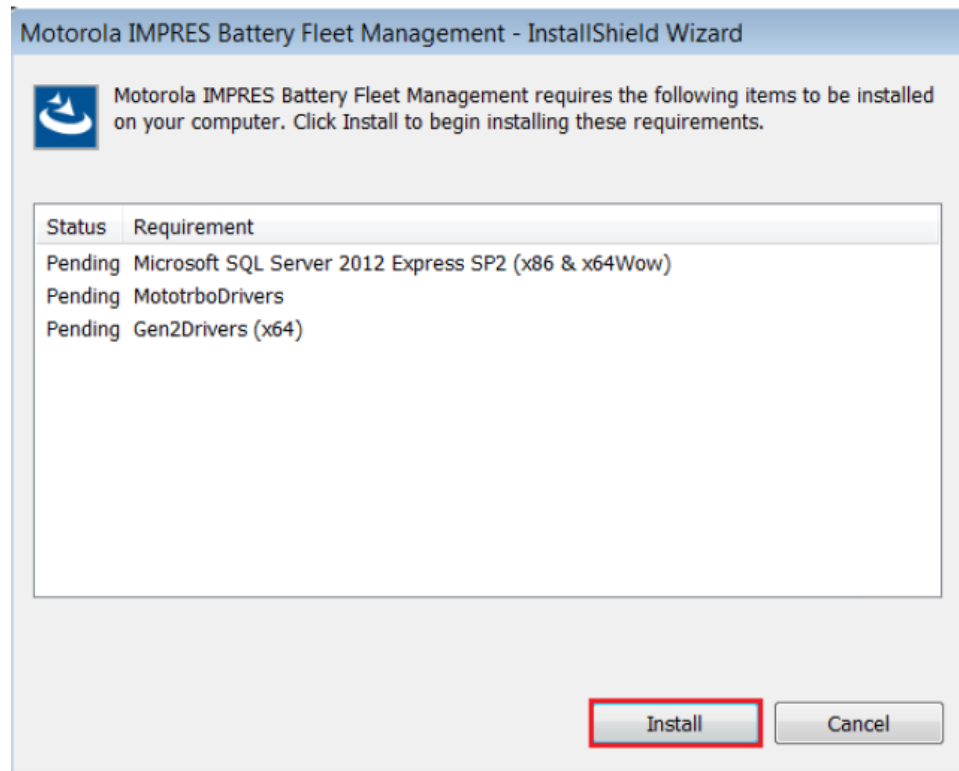
Installing SQL Server Express 2012 (If Requested)

Procedure:

- 1 To install the Microsoft SQL Server Express 2012, click on **Install**.



NOTE: To complete the installation, refer to the steps in the following images.



A separate window appears for the SQL installation.



NOTE: Do not select **Cancel** on the Install Shield.

Administrator: Windows PowerShell window is displayed. The installation process begins automatically and completes within 5 minutes.

```
Administrator: Windows PowerShell
Setting: QUIETSIMPLE
Value specified: True
New setting source: ConfigFile; previous setting source: CommandLine. The previous setting values were preserved.
-----
Setting: UPDATABLE
Value specified: False
New setting source: ConfigFile; previous setting source: CommandLine. The previous setting values were preserved.
-----
Setting: FEATURES
Value specified: SQLENGINE,REPLICATION,SNAC_SDK
New setting source: ConfigFile; previous setting source: Default
-----
Setting: UPDATESOURCE
Value specified: MU
New setting source: ConfigFile; previous setting source: NotSpecified
-----
Setting: HELP
Value specified: False
New setting source: ConfigFile; previous setting source: CommandLine. The previous setting values were preserved.
-----
Setting: INDICATEPROGRESS
Value specified: True
New setting source: ConfigFile; previous setting source: CommandLine. The previous setting values were preserved.
-----
Setting: X86
Value specified: False
New setting source: ConfigFile; previous setting source: CommandLine. The previous setting values were preserved.
-----
Setting: SOMEREPORTING
Value specified: False
New setting source: ConfigFile; previous setting source: NotSpecified
-----
Completed Action: ProcessChainerConfigFileArguments, returned True
-----
Running Action: ProcessSlipstreamParameters
Attempting to save the setting 'PCUSOURCE'
Setting source: ConfigFile
Expand input setting PCUSOURCE from: .\PCUSOURCE to C:\Users\John Preston\Downloads\BFM_V4.0_WebApp_Save_12_Clicks\ISSet
upPrerequisites\{A5128846-8218-4850-A2A0-FBA78C485D29}\PCUSOURCE
Completed Action: ProcessSlipstreamParameters, returned True
-----
Running Action: SetRoleAndUIModeForExpressMedia
Executing SetRoleAndUIModeForExpressMedia action.
Completed Action: SetRoleAndUIModeForExpressMedia, returned True
-----
Running Action: InitializeRetryHandler
Completed Action: InitializeRetryHandler, returned True
-----
Running Action: ValidateChainerSetting
```

1.5

Installing MOTOTRBO Radio Driver

When and where to use:**NOTE:**

This installation is only needed if your computer requests for it.

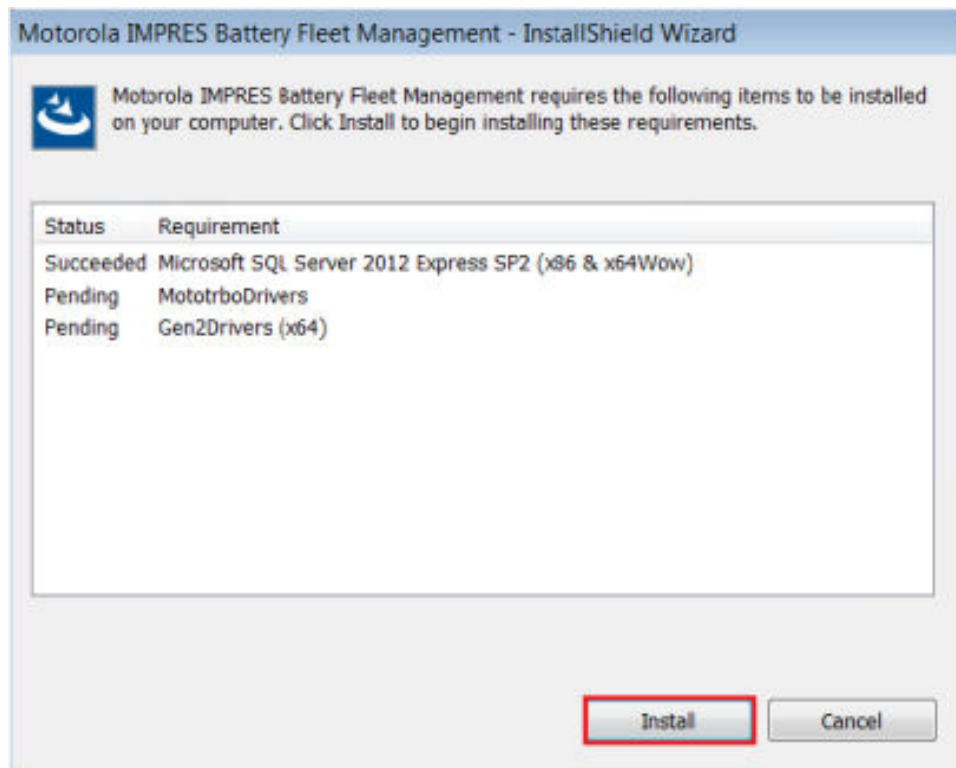
All customers have to complete the MOTOTRBO Driver installation.

Procedure:

- 1 To install the MOTOTRBO radio driver, click on **Install**.



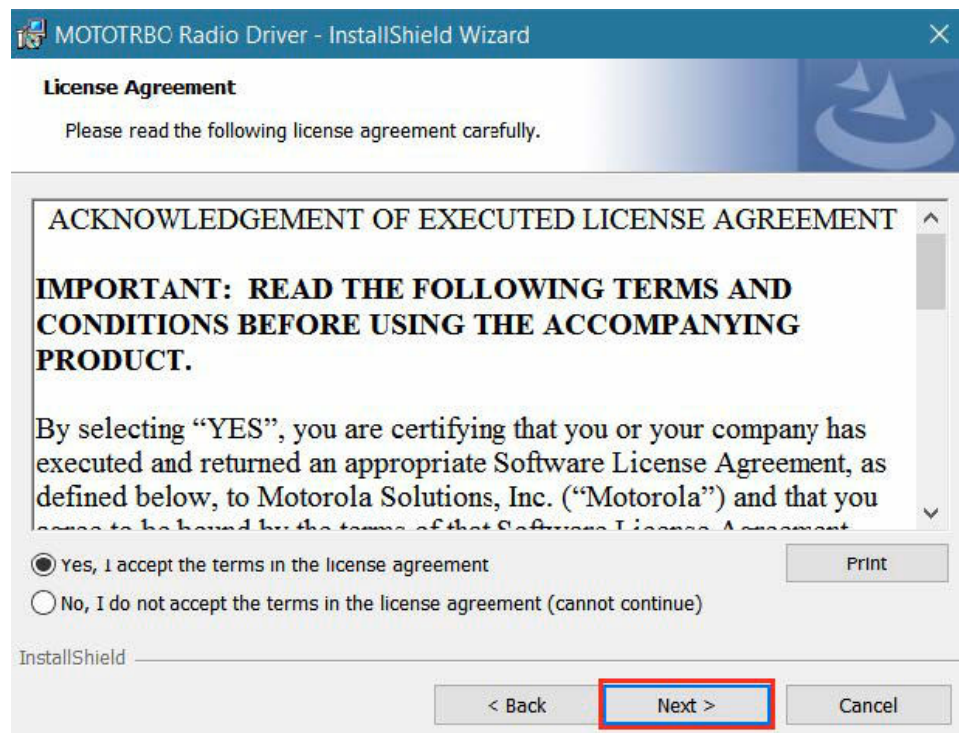
NOTE: To complete the installation, refer to the steps in the following images.



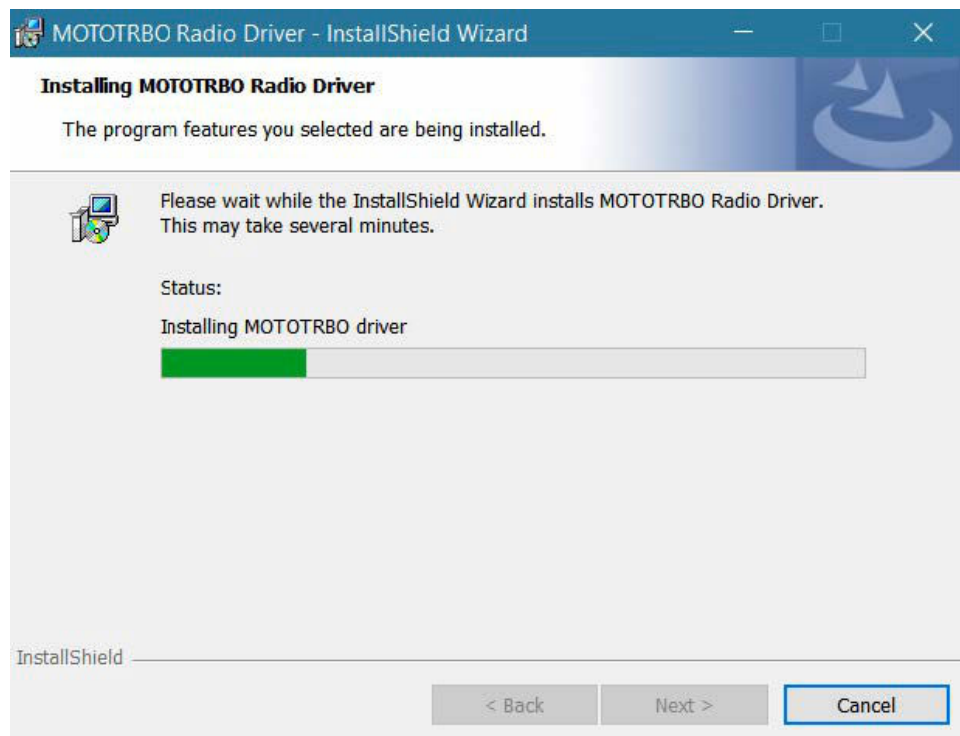
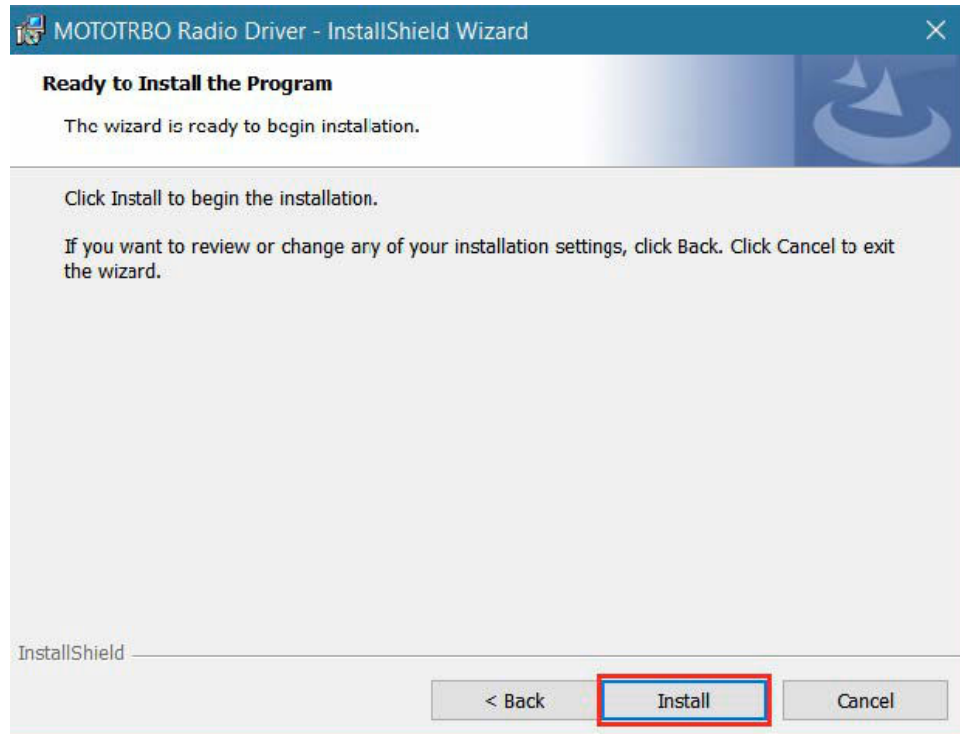
- 2 Click on **Next** when the screen displays **MOTOTRBO Radio Driver - InstallShield Wizard** window.



- 3 Accept the license agreement and click on **Next**



- 4 To install the MOTOTRBO Over-the-Air (OTA) drivers, click on **Install**.



- 5 To exit the MOTOTRBO driver installation window, click on **Finish**.



1.6

Installing IMPRES Gen 2 Drivers

When and where to use:



NOTE: This installation is only needed if your computer requests for it.

Procedure:

- 1 To install the IMPRES Gen 2 drivers, click on **Install**.

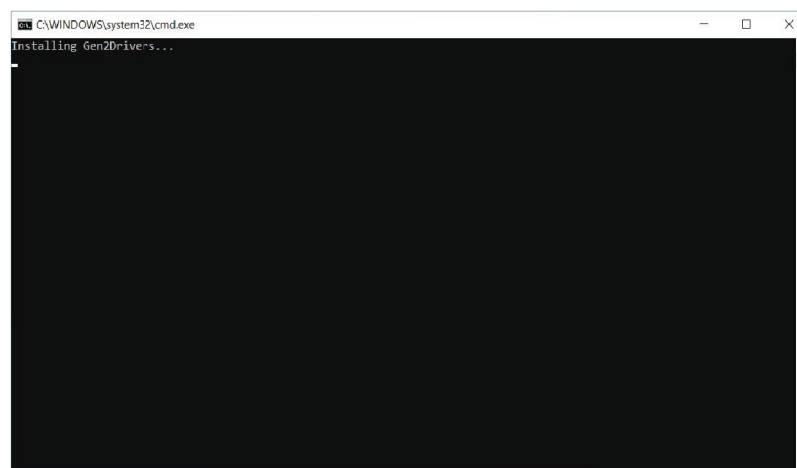


NOTE:

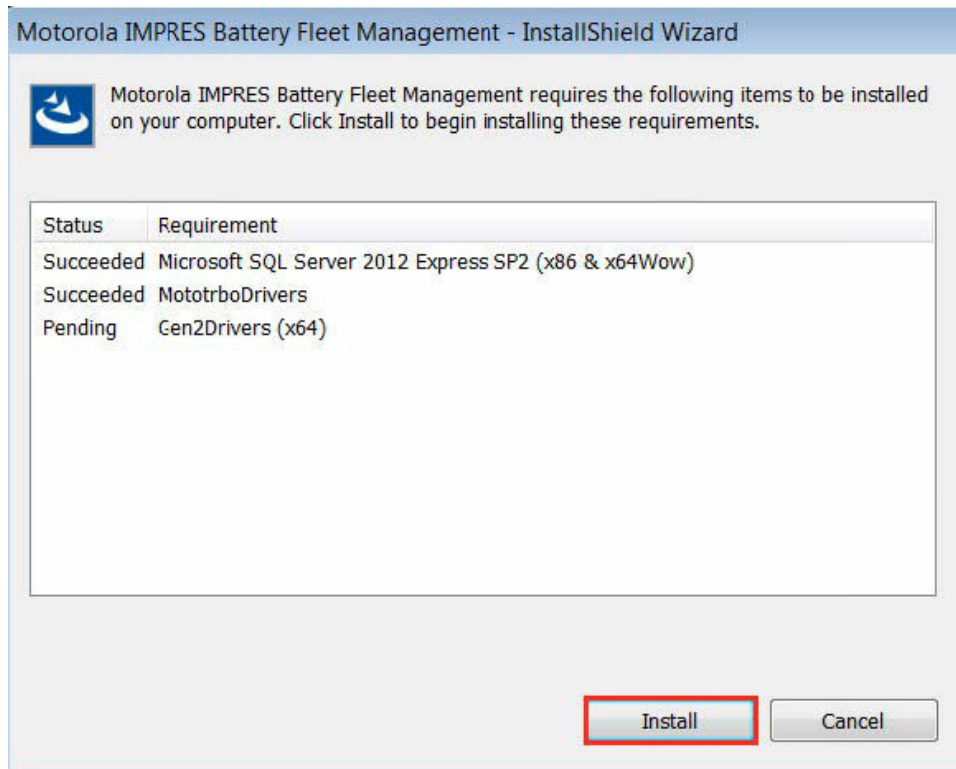
To complete the installation, refer to the steps in the following images.

Computer displays the prerequisite name as 'Gen2Drivers (x64)' for 64 bit computer and 'Gen2Drivers (x86)' for 32 bit computer.

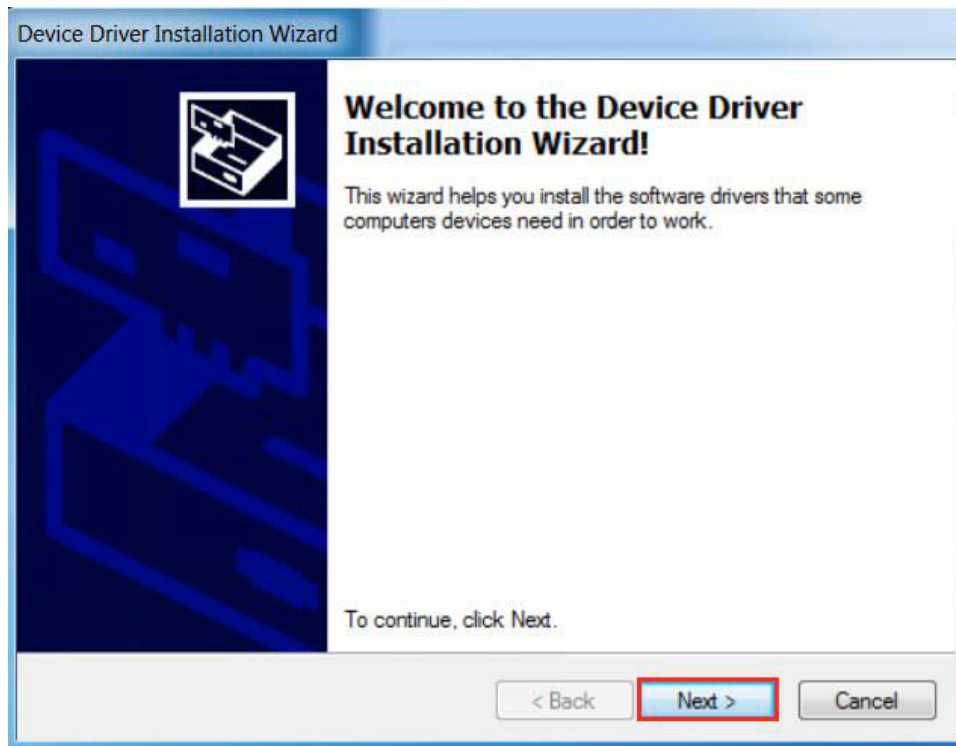
The below window appears if the previous version of IMPRES Gen 2 Drivers installed.



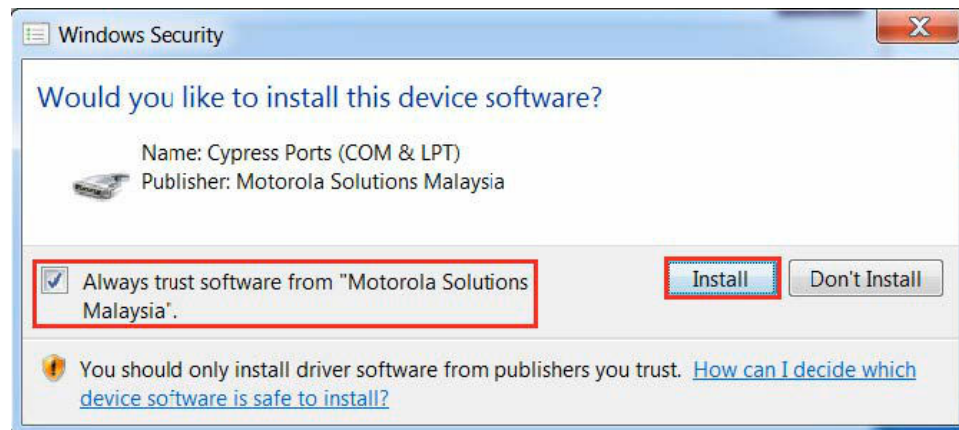
The **Motorola IMPRES Battery Fleet Management - InstallShield Wizard** window appears if this is your first time installation.



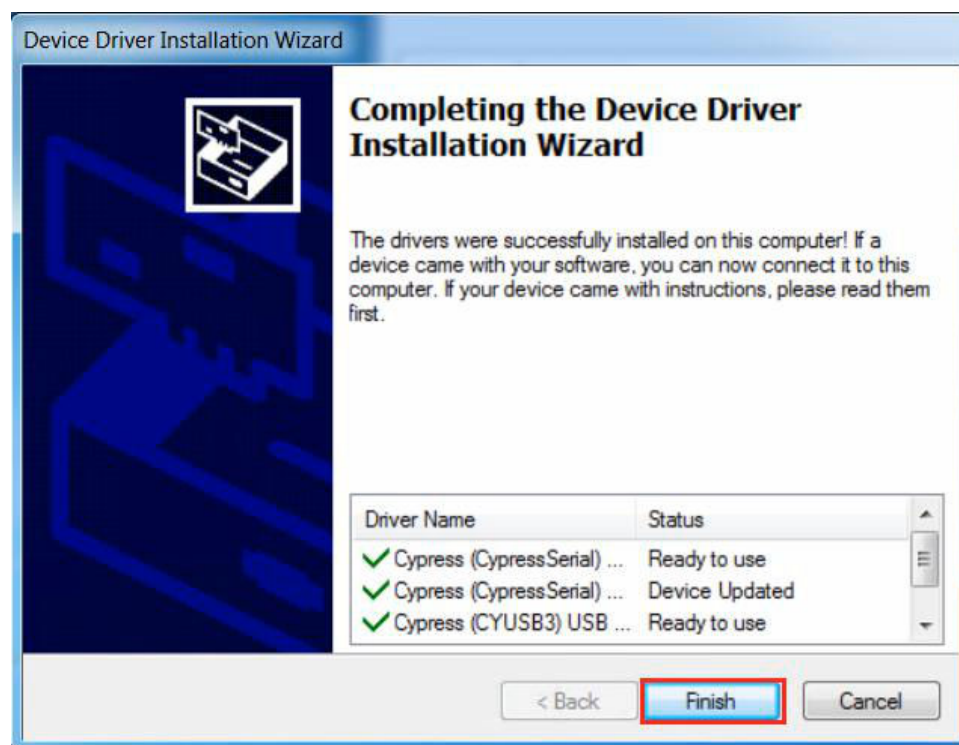
- 2 Click on **Next** when the welcome window appears.



- 3 Select **Always trust software from "Motorola Solutions Malaysia"** and click on **Install** to proceed if requested.



- 4 To close the installation wizard, click on **Finish**.



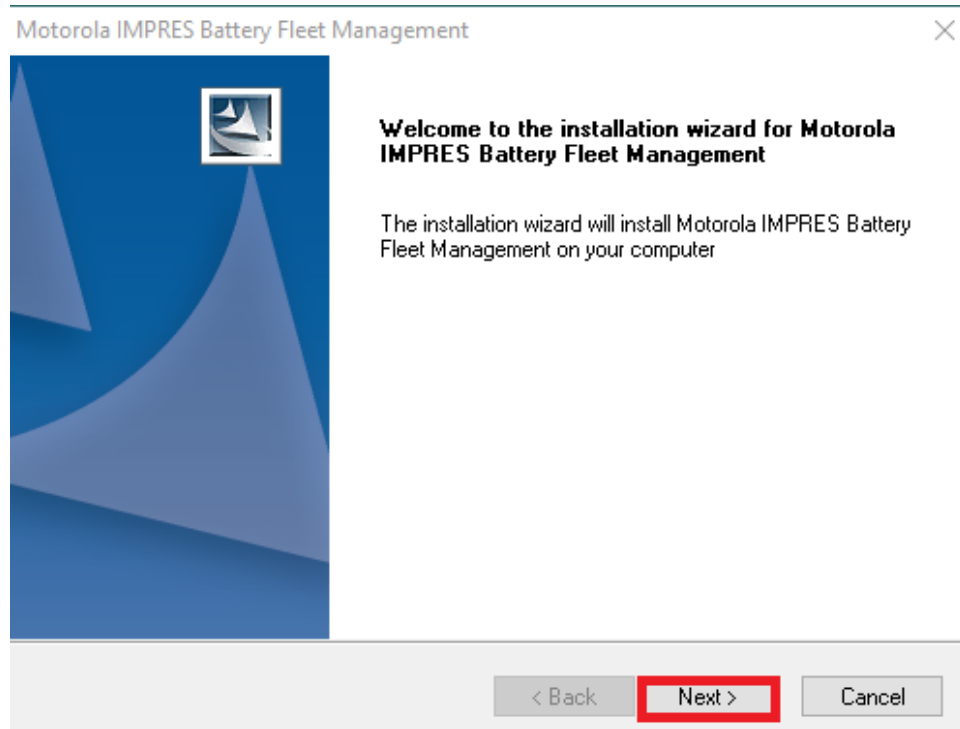
1.7

Installing IMPRES Battery Fleet Management

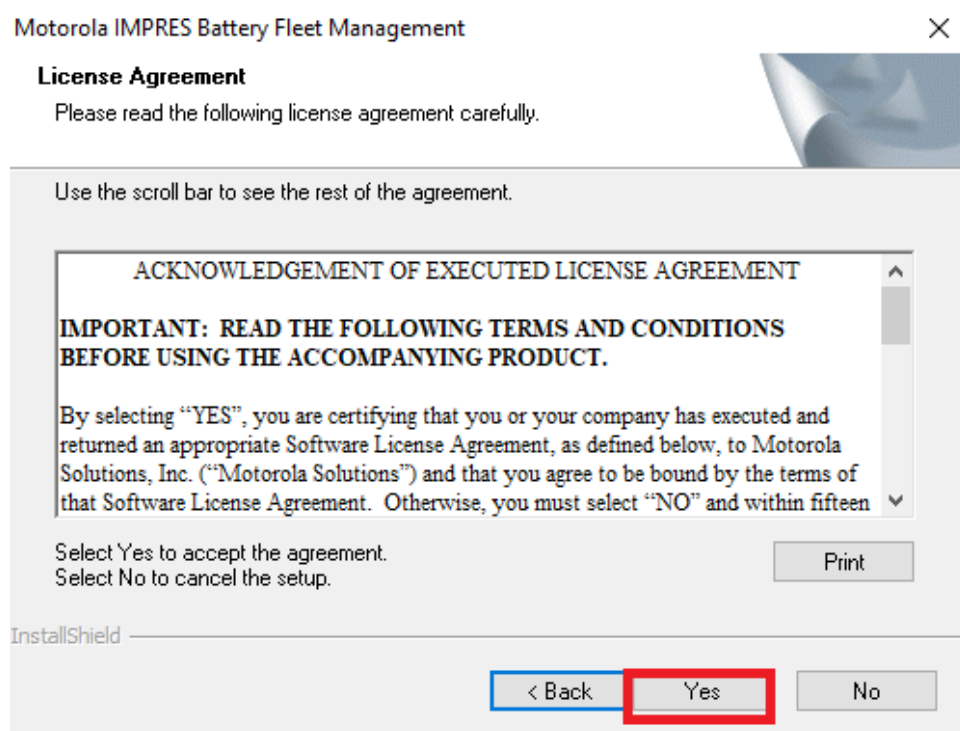
After installing the prerequisites software, the main installation of battery fleet management begins. The computer displays the IMPRES Battery Fleet Management welcome screen.

Procedure:

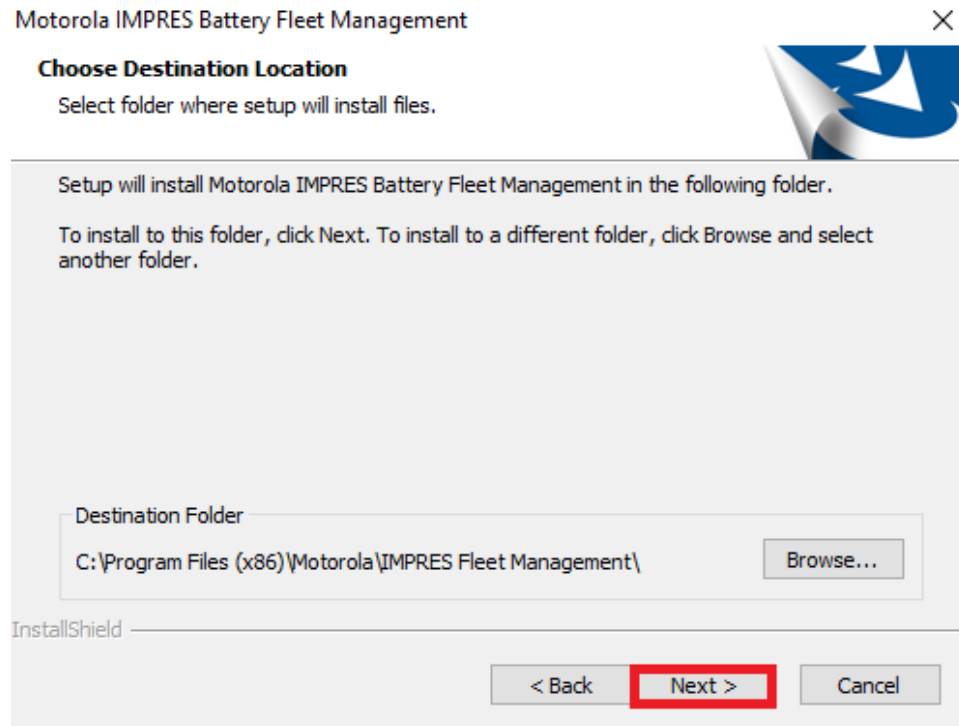
- 1 Click on **Next** when the **Welcome** screen appears.



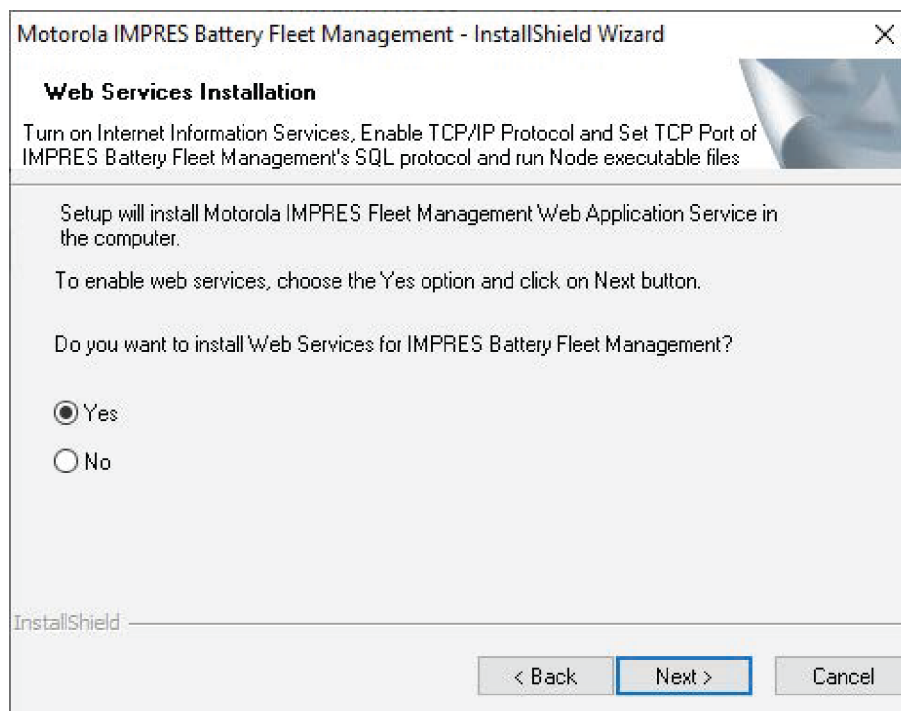
- 2 To accept the Software License agreement, select **Yes** after reading the agreement.



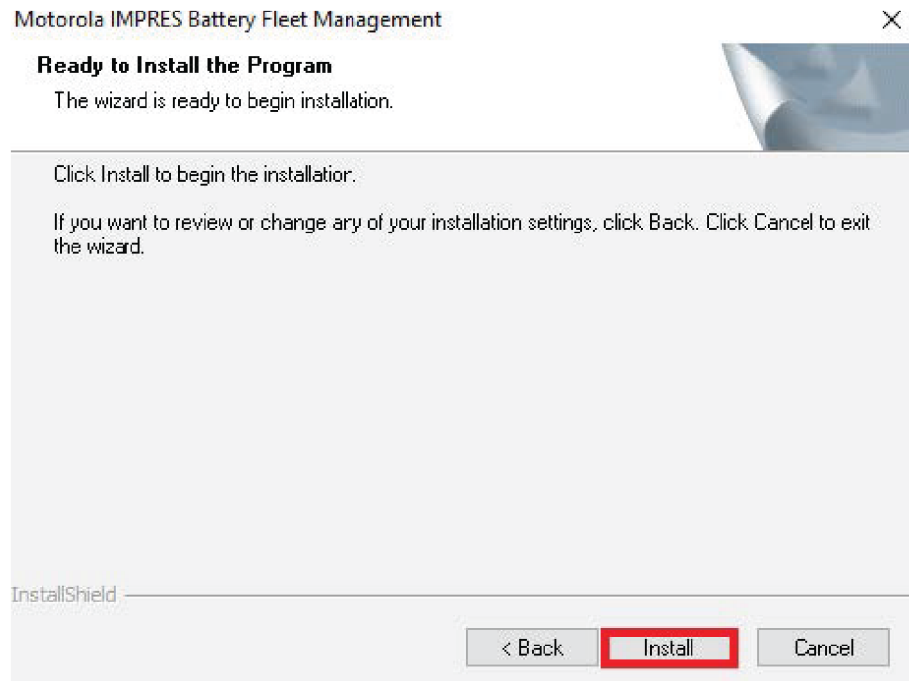
- 3 To continue the installation process, click on **Next**.



- 4 If you choose the machine to be the fleet management server, click on **Yes**. Click on **No** if you choose the client machine as the fleet management server.



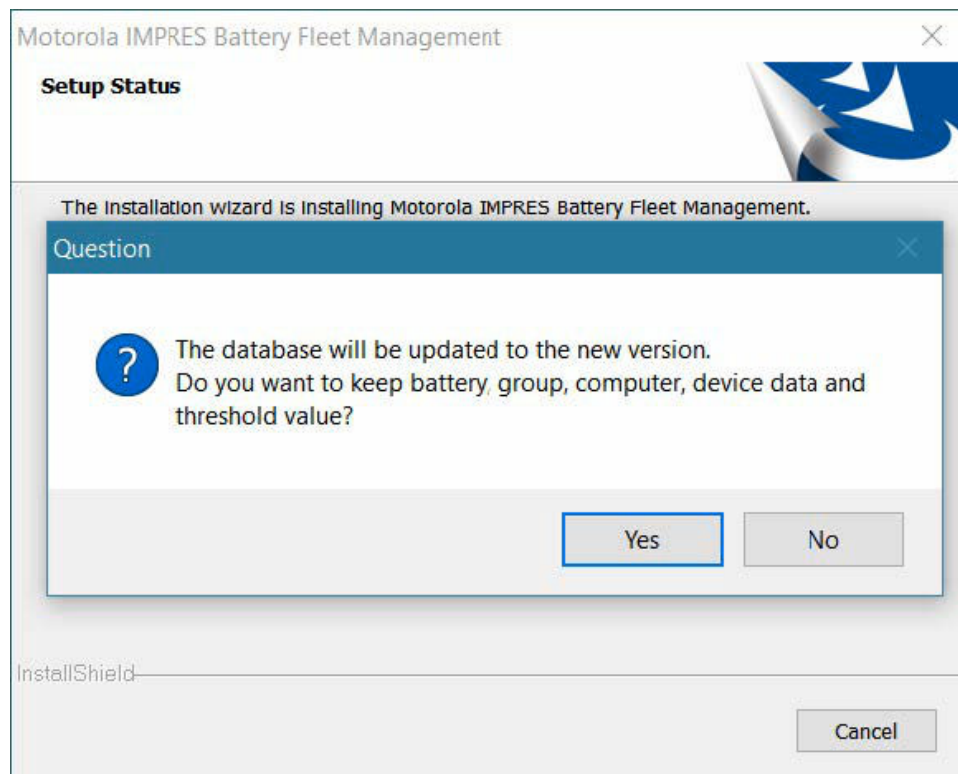
- 5 To start the installation, click on **Install**.



- 6 To upgrade the previous version of IMPRES Battery Fleet Management application, click **Yes** to upgrade automatically and to retain the older settings for the thresholds.



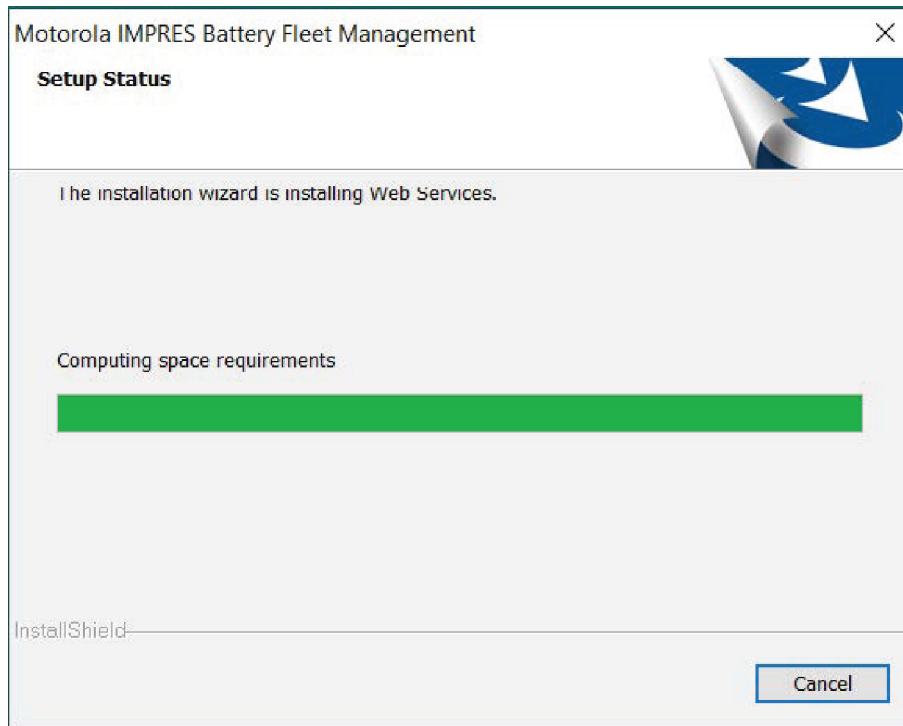
NOTE: If this is your first time installation, no upgrade messages are prompted.



- 7 Once the IMPRES Battery Fleet Management installation is complete, install the IMPRES driver on the computer. For more details, see [Installation of IMPRES Devices on page 36](#).

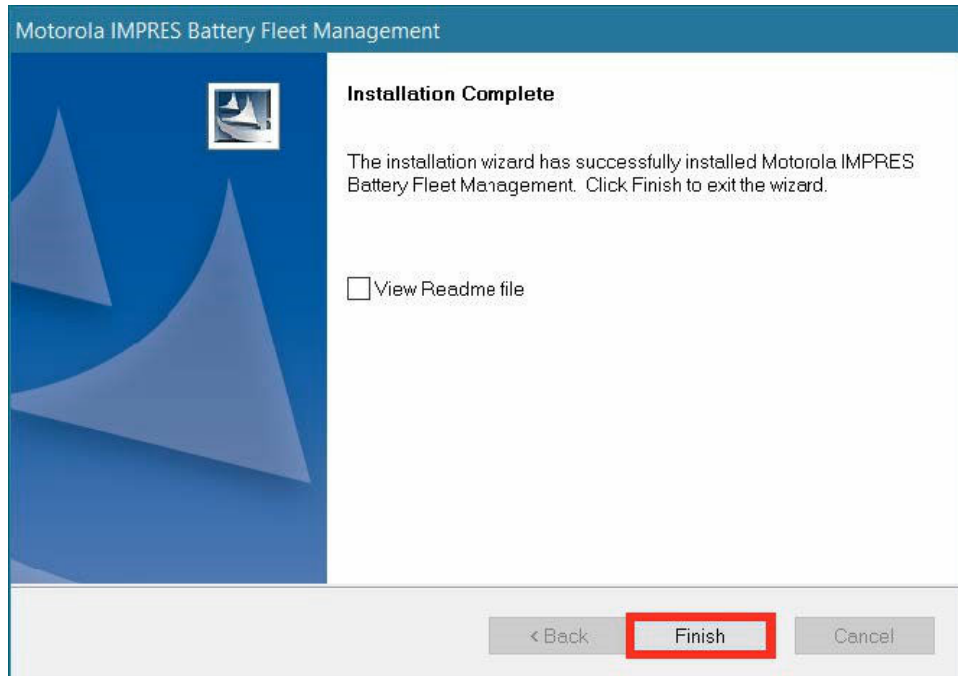


NOTE: You may be asked to reboot your computer during the installation.



```
Administrator: Windows PowerShell
Before Appending Environment PSModulePath: C:\Program Files\WindowsPowerShell\Modules;C:\Users\cjp017\Documents\WindowsP
owershell\Modules;C:\Program Files (x86)\WindowsPowerShell\Modules;C:\WINDOWS\system32\WindowsPowerShell\v1.0\Modules;c:
\Program Files (x86)\Microsoft SQL Server\110\Tools\PowerShell\Modules\
Import-Module sqlps
WARNING: Could not obtain SQL Server Service information. An attempt to connect to WMI on
'Microsoft.WindowsAzure.Commands.SqlDatabase.Types.ps1xml' failed with the following error: The RPC server is
unavailable.
WARNING: Could not obtain SQL Server Service information. An attempt to connect to WMI on
'Microsoft.WindowsAzure.Commands.SqlDatabase.Types.ps1xml' failed with the following error: The RPC server is
unavailable.
WARNING: Could not obtain SQL Server Service information. An attempt to connect to WMI on
'Microsoft.WindowsAzure.Commands.SqlDatabase.Types.ps1xml' failed with the following error: The RPC server is
unavailable.
WARNING: Could not obtain SQL Server Service information. An attempt to connect to WMI on
'Microsoft.WindowsAzure.Commands.SqlDatabase.Types.ps1xml' failed with the following error: The RPC server is
unavailable.
WARNING: Could not obtain SQL Server Service information. An attempt to connect to WMI on
'Microsoft.WindowsAzure.Commands.SqlDatabase.Types.ps1xml' failed with the following error: The RPC server is
unavailable.
WARNING: Could not obtain SQL Server Service information. An attempt to connect to WMI on
'Microsoft.WindowsAzure.Commands.SqlDatabase.Types.ps1xml' failed with the following error: The RPC server is
unavailable.
WARNING: Could not obtain SQL Server Service information. An attempt to connect to WMI on
'Microsoft.WindowsAzure.Commands.SqlDatabase.Types.ps1xml' failed with the following error: The RPC server is
unavailable.
WARNING: Could not obtain SQL Server Service information. An attempt to connect to WMI on
'Microsoft.WindowsAzure.Commands.SqlDatabase.Types.ps1xml' failed with the following error: The RPC server is
unavailable.
WARNING: Could not obtain SQL Server Service information. An attempt to connect to WMI on
'Microsoft.WindowsAzure.Commands.SqlDatabase.Types.ps1xml' failed with the following error: The RPC server is
unavailable.
WARNING: The names of some imported commands from the module 'sqlps' include unapproved verbs that might make them less
discoverable. To find the commands with unapproved verbs, run the Import-Module command again with the Verbose
parameter. For a list of approved verbs, type Get-Verb.
Import-Module sqlps module attempts: 1
```

- 8 To complete the installation, click on **Finish**.



Chapter 2

Feature Configuration

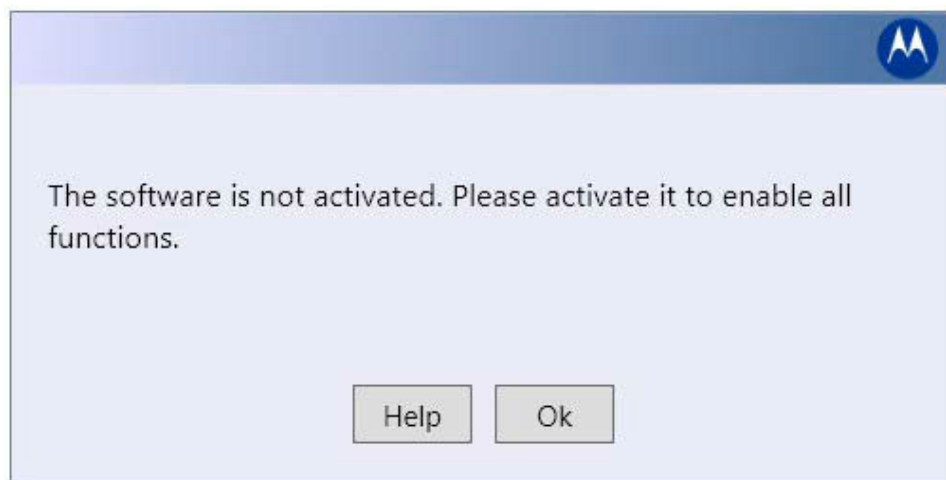
This chapter is about setting up your applications.

2.1

Activation of IMPRES Battery Fleet Management Application

Activate IMPRES Battery Fleet Management application to enable full functionalities.

If the application is not activated, the following message box is displayed when launching the application.



NOTE:

Running the IMPRES Battery Fleet Management application on a Virtual Machine with a dynamic physical Media Access Control (MAC) address may cause the application to lose activation. To run the IMPRES Battery Fleet Management application on a Virtual Machine, configure the Virtual Machine with a static or manual physical MAC address.

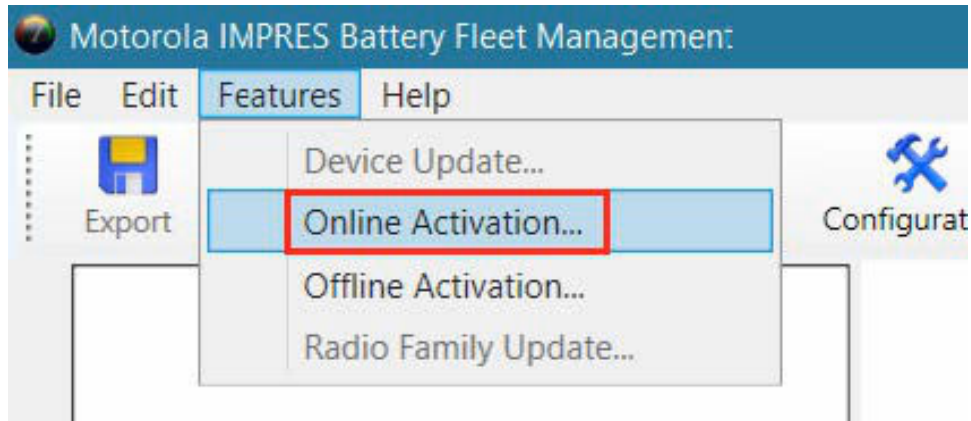
Running the IMPRES Battery Fleet Management application on a PC which has Wi-Fi as its primary Network Interface Controller (NIC) causes loss of activation if the WIFI is set to **RANDOMIZE** the MAC Address.

2.1.1

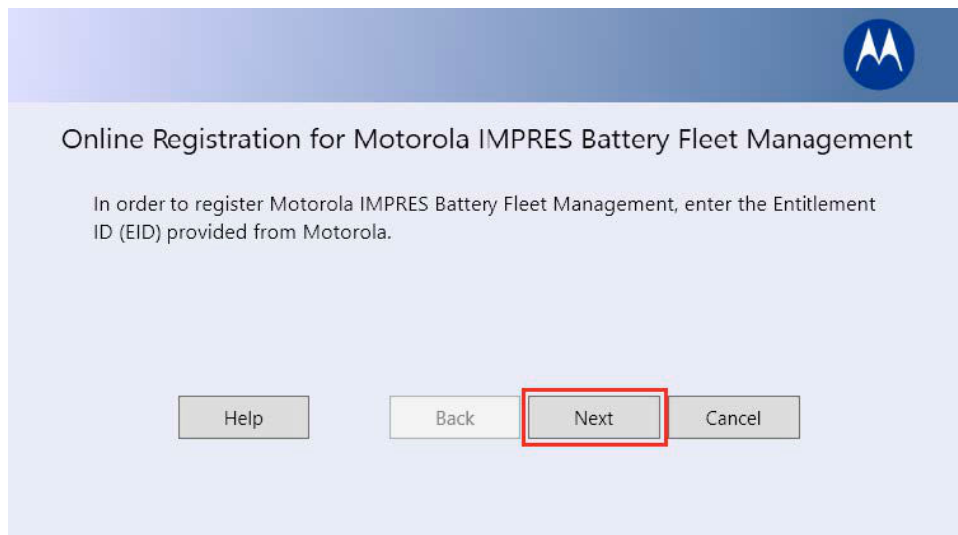
Performing Online Activation

Procedure:

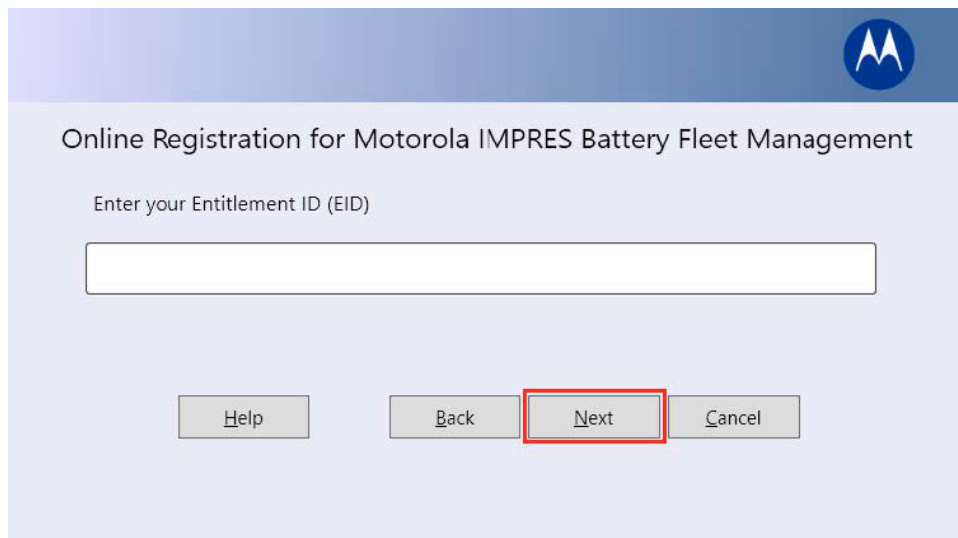
- 1 Open the application.
- 2 For online activation, go to **Features**→**Online Activation**....



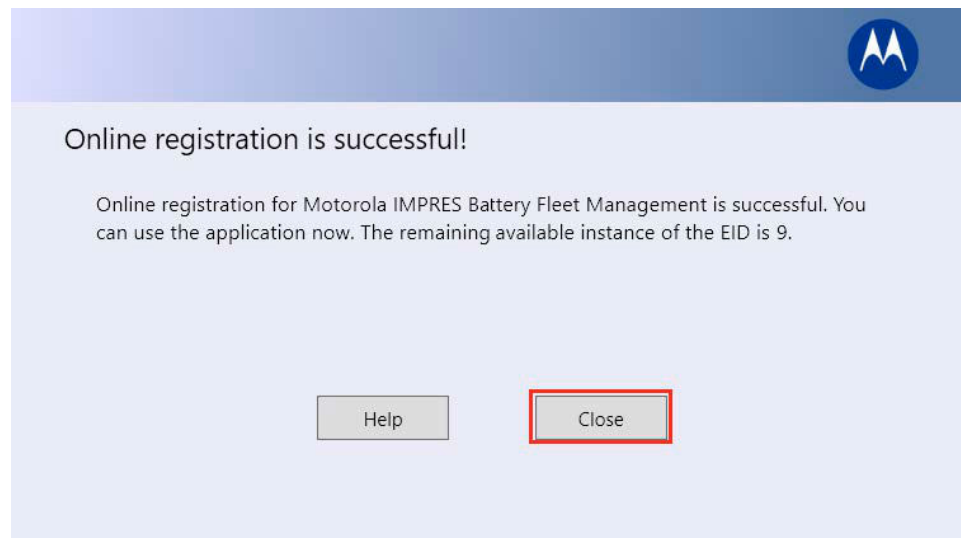
3 Click on **Next**



4 Enter the provided **Entitlement ID (EID)** and click on **Next** to proceed.



5 Once the registration is successful, you can see the remaining available instance of the EID left. Click on **Close** to finish the registration.



2.1.2

Performing Offline Activation

When and where to use:



NOTE: To perform an offline activation, refer to the Troubleshooting and External Configuration manual on how to create an account, activate your Electronic ID (EID), add a device, and generate a license from the HOST ID that is saved in this process. The manual also provides information on how to save the license as a BIN file to be used in this section.

Procedure:

- 1 Open the application.
- 2 For offline activation, go to **Features**→**Offline Activation...**

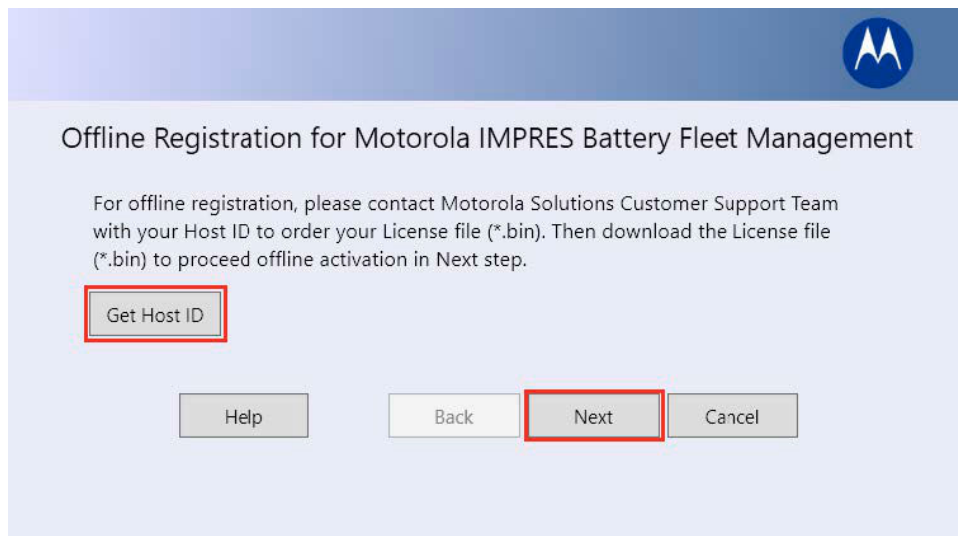


- 3 To save the Host ID file, click on **Get Host ID**.

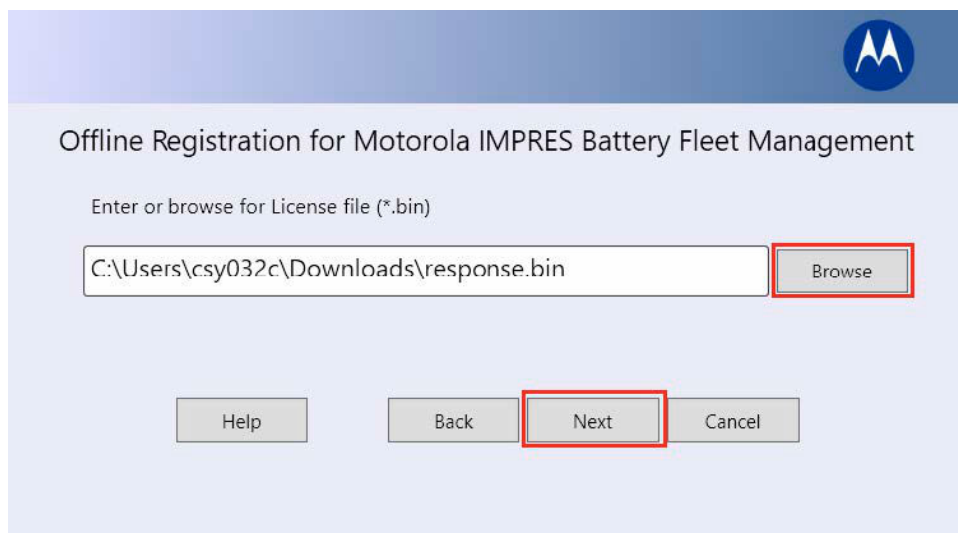


NOTE: To generate a license as a BIN file from the HOST ID, refer to the Troubleshooting and External Configuration manual.

- 4 Once you have the License file, click on **Next**.



- 5 To locate the provided License file (*.bin), click on **Browse** and click on **Next** to proceed.



- 6 Once the registration is successful, click on **Close** to finish the registration.



2.2

Setting up Server/Client Environment

Procedure:

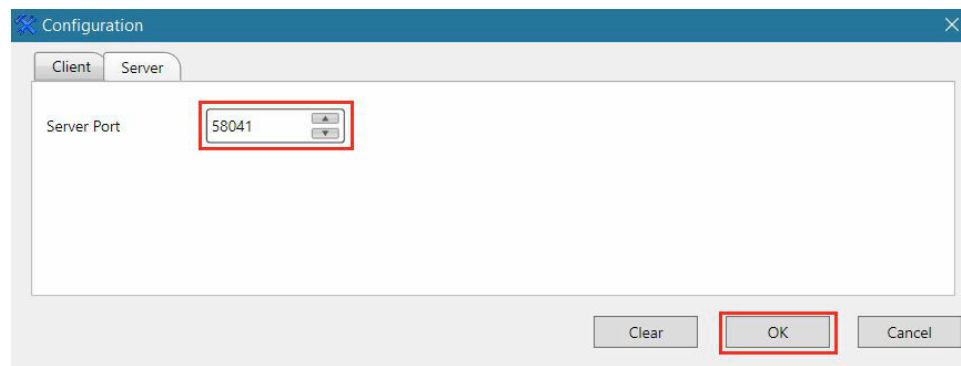
- 1 To setup IMPRES Battery Fleet Management in the Server/Client environment mode, start the Application as **Administrator**.
- 2 Click on the **Configuration** icon.

2.2.1

Setting Up Server PC

Prerequisites:

In the Server tab, insert the port number on which the IMPRES Battery Fleet Management server communicates to clients. This port number must be the same on all computers running IMPRES Battery Fleet Management.



2.2.2

Setting Up Client PC

Procedure:

- 1 In the **Client** tab, insert the **Server Address** of the computer that is currently configured as the IMPRES Battery Fleet Management server.



NOTE: If there is only one computer running IMPRES Battery Fleet Management in your organization, the value of the Server Address should be **localhost**.

- 2 Insert the **Server Port** number on which this client computer communicates with the IMPRES Battery Fleet Management server.



NOTE: The value in the textbox should match the value in the **Server Port** textbox on the **Server Tab** on all computers running IMPRES Battery Fleet Management.

Figure 1: Client PC

The screenshot shows a 'Configuration' window with two tabs: 'Client' and 'Server'. The 'Client' tab is active. It contains the following fields and controls:

- Server Address:** A text box containing '10.228.35.23'.
- Server Port:** A spin box containing '58041'.
- Radio Network:** A section with an 'Enable' checkbox (unchecked) and a 'Port' spin box (set to '4012'). A note next to it says: '(*Please calibrate battery before retrieve any battery information through OTA)'. There is also a 'Clear' button.
- UNS Client:** A section with an 'Enable' checkbox (unchecked) and several text boxes: 'Username', 'Password', 'IDM Address' (with placeholder 'e.g. idm.motorolasolutions.com'), 'UNS Address' (with placeholder 'e.g. uns.motorolasolutions.com'), 'Domain' (with placeholder 'e.g. abc'), and 'Presentity' (with placeholder 'e.g. pres:suid.00001.001.000001@abc'). A note next to the 'Presentity' field says: '(*Device ID must be in hexadecimal with leading zeros e.g. pres:suid.005dc.0d7.00251c@abc)'. There is also a 'Clear' button.
- Buttons:** 'Clear', 'OK' (highlighted with a red box), and 'Cancel'.

3 Fill in the following values in the **Client** tab:

- Server Address : This is the IP address of the Battery Management server
- Server Port : 58041

2.3

Enabling MOTOTRBO Radio Network Feature



NOTE: This procedure is not applicable for the ASTRO system installations.

Procedure:

- 1** To enable **Mototrbo Radio Network** feature, right-click on the application and run as **Administrator**.
- 2** Click on the **Configuration** icon.

The Radio Network is disabled by default. You need to enable the Radio Network when the computer is used as a radio data gateway.



NOTE:

If the you want to use the Server-Client connection, check the **Enable** button on Radio Network on the client PC and enter the User Datagram Protocol (UDP) Port of Radio Network on the client PC.

The Application requires the Motorola Network Interface Service (MNIS) or a mobile radio in order to route the data to the appropriate channel and site. A static IP route may need to be manually entered in the computer that routes all radio data through the mobile radio network interface if the Multi-Channel Device Driver (MCDD) is not used.

For example, by the default radio network ID configuration such as **Subscriber Network ID=12; Subscriber Network Mask=255.0.0.0**. The following is the route table:

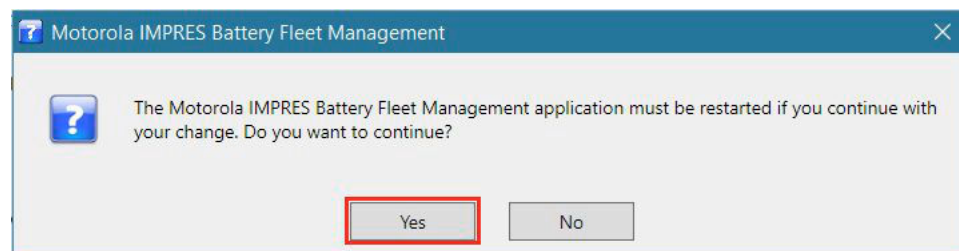
```
=====
Persistent Routes:
Network Address      Netmask    Gateway Address  Metric
169.254.0.0          255.255.0.0    192.168.1.6      1
13.0.0.1             255.0.0.0      192.168.10.12    1
12.0.0.0             255.0.0.0      192.168.10.1     1
=====
```

For example, the following is to add a route entry: **route add 12.0.0.0 mask 255.0.0.0 192.168.10.1 -p**

To validate the setup of the radio gateway, you are able to ping the individual radio IP. For example, the following command is to check a radio with radio =1: **ping 12.00.00.01**

- 3 When the following dialog box appears, click on **OK→Yes**.

IMPRES Battery Fleet Management application restarts to begin MOTOTRBO Radio Network service.



2.4

IMPRES Battery Fleet Management UNS Configuration

The following values are needed to find or create an IMPRES Battery Fleet Management connection:

- Username and password
- IDM Address

- UNS Address
- Domain
- Presentity - Static Group



NOTE: These values come from the account setup in IMW. For more information about how to set the account up and add radios to the system refer to Enable ASTRO Over-The-Air Battery Management (OTABM) feature found in the Battery Fleet Management Troubleshooting and External SW Configuration Guide.

Fill in the following values in the UNS Client section:

- Username: 12345
- Password: *****
- IDM Address: FQDN IS THE IDM OR THE IP ADDRESS OF IDM (IDM.UNS.CITY.GOV / 10.51.1.135)
- UNS Address: FQDN IS THE UNS OR THE IP ADDRESS OF UNS (CORE1.UNS.CITY.GOV / 10.51.1.132)
- Domain: MOT.SZ02c3
- Presentity: STATIC:IMPRES-STATIC@MOT.SZ02c3

2.4.1

Configuring Battery Fleet Management

Prerequisites: Depending on your Intelligent Middleware (IMW) version, the requirements differ.

Table 4: IMPRES Battery Fleet Management Configuration

Field	IMW 5.2.2 and Below	IMW 5.2.3
Username/Password	IDM Configuration	Application Configuration
IDM Address	IDM FQDN or IP Address	IDM FQDN or IP Address
UNS Address	Core1 FQDN or IP Address	IDM FQDN or IP Address

Procedure:

- The following procedure enables the Over-the-Air Battery Management (OTABM) feature:
 - Start the Application as **Administrator** and then select the **Configuration** icon.
 - To enable the feature, navigate to **UNS Client**→**Enable**.
The UNS Client is disabled by default.
- Provide the following information to connect to the IMW/UNS System and click on **OK**.

Table 5: Configuration

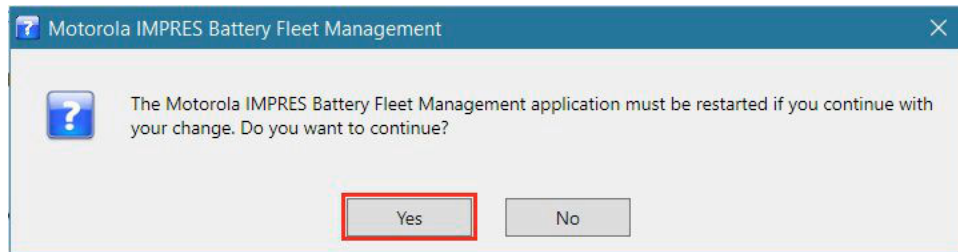
Field	Description
Username and Password	This is the login to the Identity Manager (IDM) server. Refer to Create an IMW client ID and Password for Battery Management . Modify the PC host file to enter the host-name and IP address.
IDM Address	The host name of the IDM server that returns to token.
UNS Address	The host name of the UNS server.
Domain	IMW SIP Domain,
Presentity	Used to subscribe to a group of radios in the IMW.

- If the IDM login is correct, the following dialog box appears. Verify all entered values and select **Yes** to proceed. Click **Yes** to continue when the Warning Message appears.

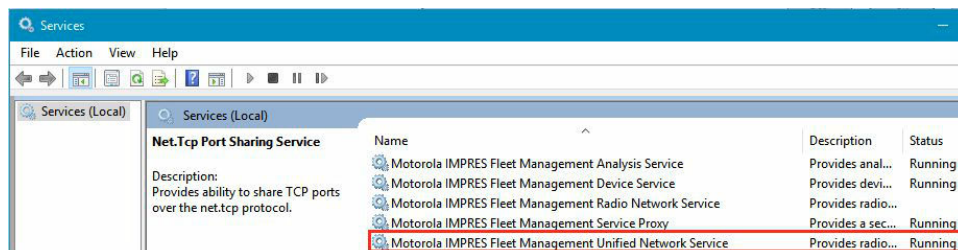


NOTE: Initial Connection attempt might fail. When that happens, click Cancel and close the Battery Fleet Management application. Restart the application as Administrator and recheck the configuration before trying again.

IMPRES Battery Fleet Management application restarts. A Green UNS Subscription Connected will appear for a good connection, or a RED UNS Subscription Disconnected will appear for a failure.

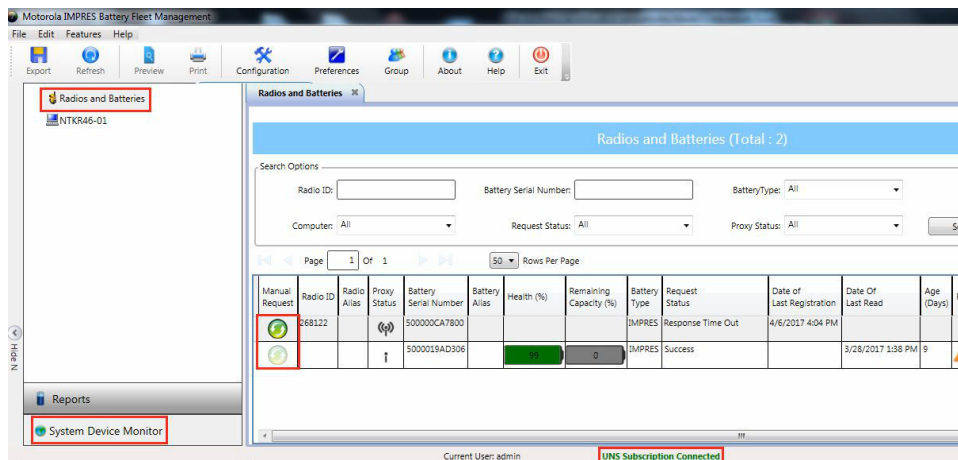


- 4 To verify that the ASTRO UNS Client service is running, navigate to **Services→Motorola IMPRES Fleet Management Unified Network Service**.

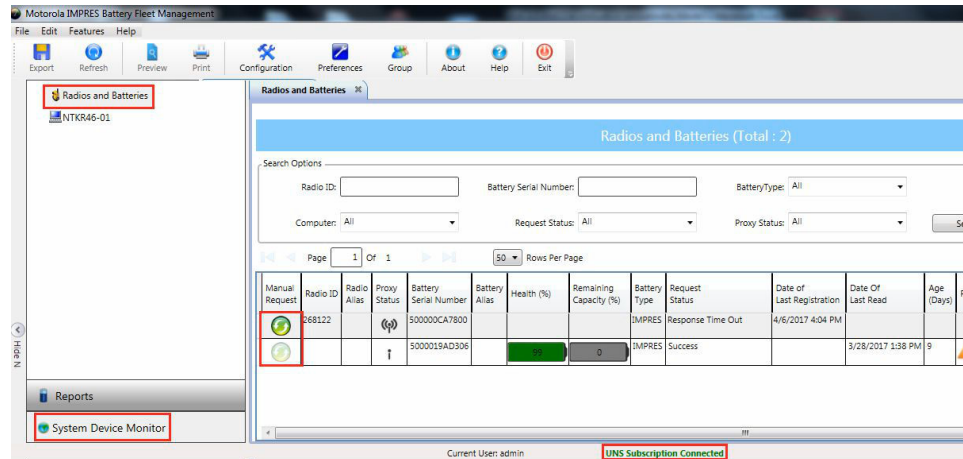


- 5 When IMPRES Battery Fleet Management receives incoming battery data, navigate to **System Device Monitor** tab and click on the **Radios and Batteries** for the battery report.

The UNS subscription connection status is shown at the bottom.



- 6 To perform a manual battery data request, click on the Green button.



NOTE: To disable both Mototrbo Radio Network and ASTRO UNS features, click on **Clear**→**OK**.

Chapter 3

Installation of IMPRES Devices

The IMPRES Battery Fleet Management application collects data from your IMPRES chargers when a battery is inserted into an IMPRES charger pocket.

To collect the battery date, the IMPRES chargers must be connected to a computer with IMPRES Battery Fleet Management application. You may connect up to 25 IMPRES chargers for every CIU unit to a single computer.

3.1

Installing a Mobile Radio as a Data Gateway



NOTE: This procedure is only applicable to MOTOTRBO systems and does not apply to ASTRO Fleet Management usage.

If you need a Mobile Radio as a data gateway, you can have a front connection or a back connection on the mobile radio and then connect other USB end to a computer which is used in IMPRES Battery Fleet Management.

Procedure:

- 1 Connect the USB to the front or the back of the Mobile radio.

Figure 2: Front Connection



Figure 3: Back Connection



- 2 Connect the standard USB cable to the USB connector on the computer.



NOTE: The computer is able to identify the connected mobile radio. A static IP route may need to be manually entered in the computer that routes all radio data through the mobile radio network interface if the Multi-Channel Device Driver (MCDD) is not utilized.

3.2

Installing IMPRES 2 Charger

Prerequisites: To install an IMPRES 2 Charger, disconnect the power to the IMPRES 2 Charger and disconnect the charger from the computer.

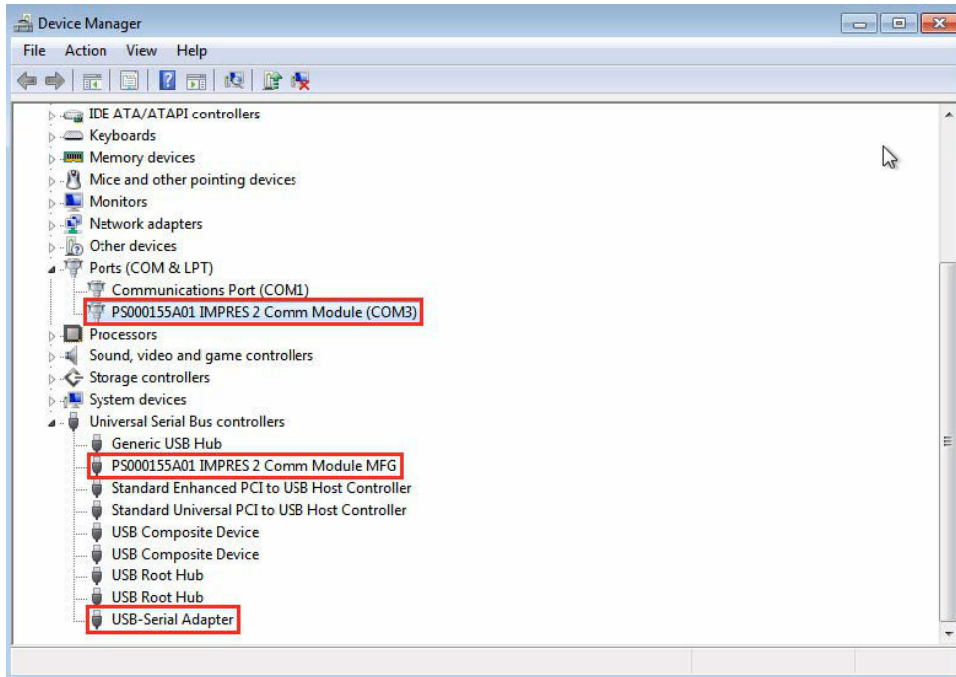
Procedure:


- 1 Connect a standard USB cable from charger to the USB port on the computer.
- 2 Apply power to the IMPRES 2 Charger.

The IMPRES 2 drivers are automatically installed for the first time.

After the drivers are successfully installed, three known devices are displayed under **Ports** and **Universal Serial Bus controllers**.

 **NOTE:** Different chargers for Multi-Unit Charger (MUC) have different names.



 **NOTE:** If IMPRES Gen 2 charger drivers are not properly installed and the hardware found for IMPRES 2 devices is not the same as in the above image, then it is required to perform a manual update to the drivers. For more details, see [Installing IMPRES Gen 2 Charger Drivers Manually \(Method 2\)](#).