

FORCE PROTECT

TRANSFORM YOUR OPERATIONS WITH INTELLIGENCE



Operations depend on access to reliable, secure, and real-time data to maintain facility security. You need a streamlined and intuitive way to operationalize tremendous amounts of data and multimedia from disparate systems including: video sources, CAD, RMS, SCADA/IOT, sensors, resource location, alerts, social media and more. Turning that information into actionable response is vital to the security of those working a federal facility. Motorola's Force Protect solution provides data that is streamlined into a common operating picture, customized to your operations. Protect your federal facility using real-time situational awareness to help keep personnel and assets safe and secure.

STREAMLINE OPERATIONS

What if your communication and data sources were streamlined into a single operating position? What if you could instantly send out mass notifications at a moment's notice? What if you could pull up any standard operating procedure (SOP) at a click of a button? What if you could be one step ahead of any incident that could turn into an emergency? Force Protect provides real-time integration of disparate data sources used in your federal Operations Center or other command environments to improve decision-making and achieve safer outcomes of emergency situations.

EXAMPLE: Safeguarding a federal facility and its inhabitants is a day-to-day operation for Federal Police Officers. Active shooter threats can become a reality at a moments notice and a swift coordinated response is needed to ensure those who are in direct danger or injured are taken out of harm's way safely and quickly.

An active shooter compromises the safety of those within the facilities boundaries. Shotspotter, via Force Protect, triggers an alarm to federal police. Instantly cameras are activated and positioned towards the threat engaging analysts working in command and control. On one unified platform, the emergency operator identifies the individual and analyzes the different camera feeds to confirm the threat.

The emergency operator activates the active shooter standard operating procedure (SOP) and notifies federal police and state and local officials, via or Force Protect. Streamlined communication via LMR, LTE, and Push-to-talk (PTT) devices are instant

to the first responders. In parallel, a mass notification is pushed out to other on-site resources and the PA system announces the emergency to innocent bystanders.

With Force Protect operators are able to visualize where the threat has navigated within the facility, the emergency operator (EO) analyzes real-time video and notifies police of the threats every move. GPS coordinates from the first responders devices allows the EO to view where enforcements are located, to ultimately direct them of the best route of action. Force Protect instantly trigger specific sensors to lock exit points, ensuring the threat does not flee the premises.

FEATURES

REAL-TIME VIDEO AGGREGATION & MANAGEMENT

Virtually monitor your facility with unlimited simultaneous camera views from fixed, body-worn, recorded, or real-time mobile video feeds, all aggregated into one position from several video management systems (VMS) you may have within your facilities or even if they are from multiple vendors. Easily reference the video source, date, time and location with full reporting and auditing functionality for after action analysis.

THREAT DETECTION AND ALERTING

Receive real-time alerts from sensors including intrusion detection systems (IDS), perimeter sensors (RADAR/SONAR/AIS/CBRNE), access control systems, gunshot detection systems, cybersecurity, and weather alerts to support proactive enforcement and more informed coordinated emergency response. PhysicalSecurity, access control mechanisms: control and monitoring of door locks, fire alarms, turnstiles / man-traps, vehicle barriers, duress buttons, and vault sensors.

IDENTITY MANAGEMENT SYSTEMS

Biometrics, card scanners, and other identification mechanisms, facial and gait recognition, including interfaces to external databases.

STANDARD OPERATING PROCEDURES (SOPs) – CENTRIC & DYNAMIC WORKFLOWS

Highly configurable and customer definable workflows and procedures unique to your environment. Integrate and scale existing applications to support, streamline, and complete workflows. Create action plans that define sequences of steps within Force Protect that help guide responders through a series of actions when they are reacting to situations. The situation log created while executing an action plan records any actions taken during the response. Action plans implement the established best practices for an organization and are unique to each Force Protect environment.

UNIFIED VOICE AND DATA COLLABORATION

Integrate LMR communications to monitor and communicate directly with field personnel and distribute actionable intelligence through voice. Also, integrate push-to-talk applications (WAVE) to allow units to communicate no matter the device (computer, smartphone, and tablet).

PERIMETER DETECTION

Actively monitor federal facility gates and perimeter by having sensors and video detect any disturbance or breach and alert units immediately.

MASS NOTIFICATION

Activate automatic or manual alerts with several Mass Notification Systems (MNS) via SMS/MMS, email, LMR (voice and text), pre-recorded or text-to-speech telephone calls, smartphone applications, computer desktop pop-up, social media, cable TV channels, notification boards, and various other types of signage with the push of a button to inform users of the threat condition.

VIDEO SYNOPSIS

Integrate with various video analytics solutions in order to review hours of recorded footage in minutes to quickly identify events, behavior, and suspects. Filter based on color, direction, size, speed, of objects and other characteristics.

MOBILE CLIENT VIDEO AND PHOTO UPLOAD

Send short video clips and images to personnel in the field to support situational awareness.

ADVANCED SEARCH AND QUERY

Query personnel, national or federal records systems, and databases to quickly extract intelligence.

GEOSPATIAL MAPPING

Visualize all available data from camera locations, CAD incidents, field personnel, social media, and more on an intuitive map that can be customized with your agency's mapping layers. 2D and 3D mapping available.

ACTIVITY LOG

Audit all actions performed by the operator in a summary view to meet investigation and legal requirements, support training, and provide transparency to the community.

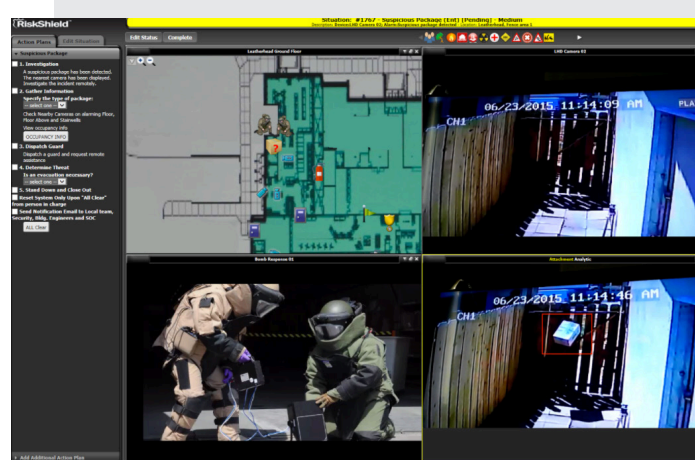
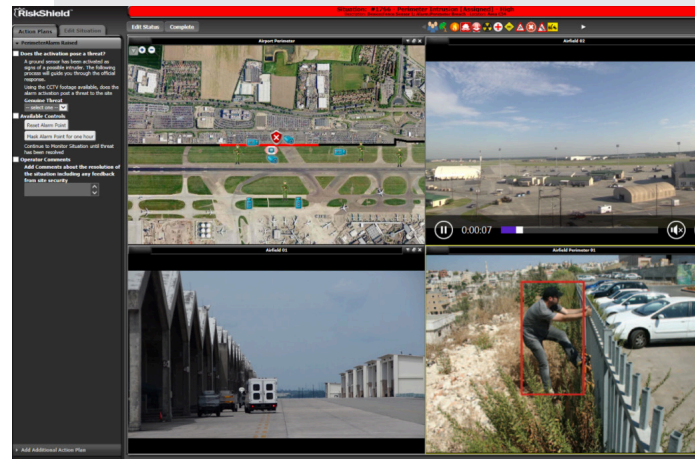
ANALYTICS & CORRELATION ENGINE

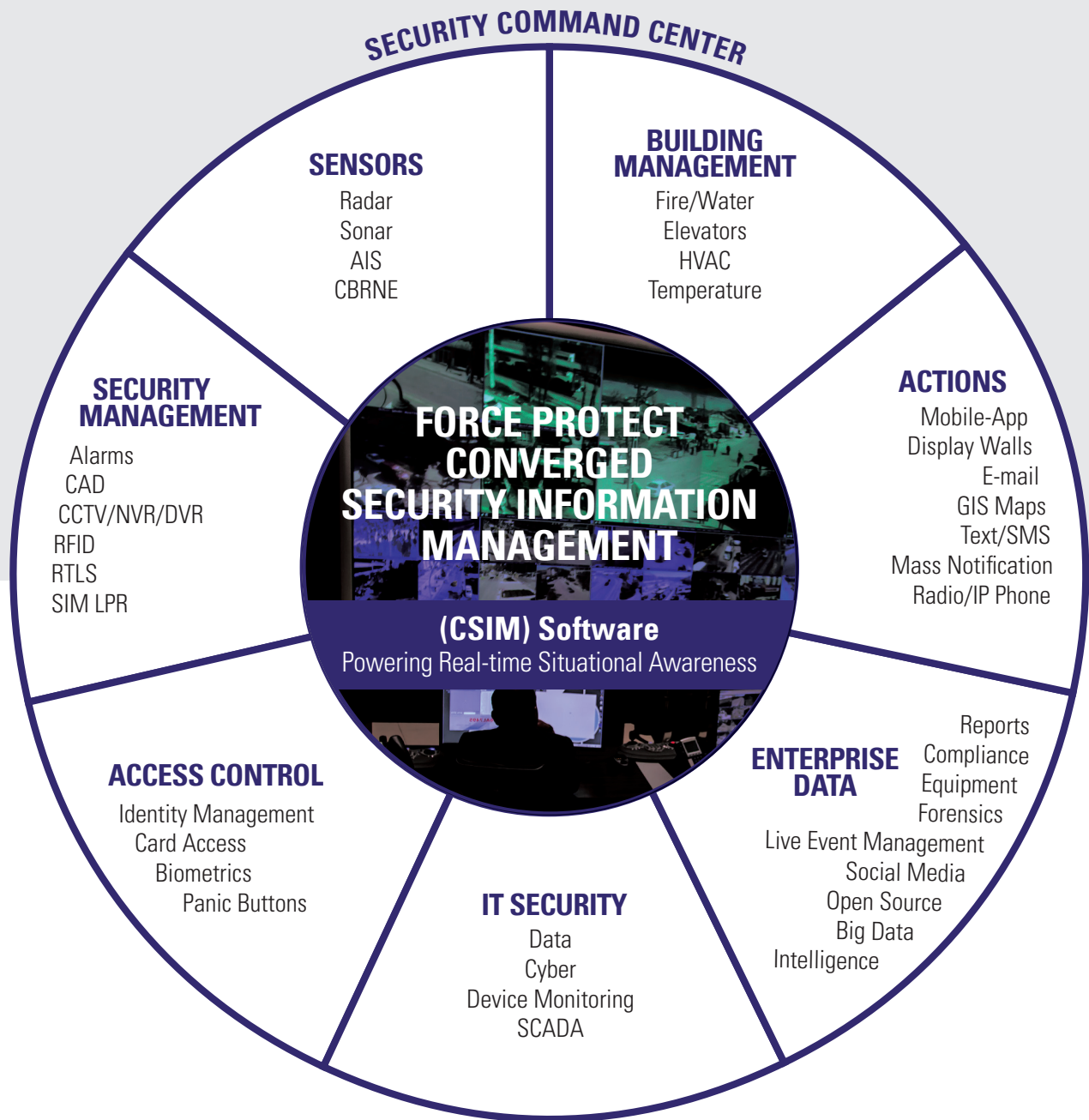
Automatically or manually associate related data together from disparate physical and cyber inputs for a more comprehensive threat assessment while providing command staff and management with simplified dashboard and reporting capabilities.

ON PREMISE. SCALEABLE. PROTOCOL AGNOSTIC.

Manage data no matter the volume, allowing installations to add or reduce data sources regardless of installation size.

ACTUAL PRODUCT PHOTOS





INVEST FOR TODAY AND THE FUTURE

Force Protect provides complete situational awareness in your operations center environment by leveraging your existing investments. By integrating all of your data and systems, your installation can take siloed data sources and create a comprehensive view and streamlined workflows.

OUTCOME OF OPERATIONS

A safe and secure facility is based on personnel and technology working to maintain its security. With a secure, on-premise CSIM/PSIM platform, operations can achieve a big-data enhanced operating picture that provides more reliable and accurate information. Units protecting the facility will gain heightened situational awareness by having instant access to critical information, and respond more quickly and intelligently to the threat at hand. Not only will units within the facility collaborate more, they will also have the ability to seamlessly share information with state and local first responders. Force Protect is the solution that takes all your installation data sources and brings them together into one unified picture, ultimately streamlining your operations.

ENHANCE YOUR OPERATING PICTURE

Force Protect is built to aggregate real-time information across installations for enhanced information sharing, collaboration, and analysis. Now your emergency operator, threat analysts, police, special forces, physical security officer and other responders can have instant access to real-time alerts, mass notifications, records and communications. Safeguard your federal facility with the power of Force Protect.



Force Protect is a unified platform that meets security and network compliances for federal facilities. Designed to aggregate and analyze data from multiple inputs making the data meaningful and actionable. Increasing situational awareness with one common operating picture. Enabling you to be your best in the moments that matter.

For more information about Force Protect contact your Motorola representative or visit MotorolaSolutions.com/ForceProtect

Partnered with  vidsys

Motorola Solutions, Inc. 500 W. Monroe Street Chicago, IL 60661 U.S.A. 800-367-2346 motorolasolutions.com
MOTOROLA, MOTO, MOTOROLA SOLUTIONS and the Stylized M Logo are trademarks or registered trademarks of Motorola Trademark Holdings, LLC and are used under license. All other trademarks are the property of their respective owners. © 2017 Motorola Solutions, Inc. All rights reserved. 4-2017

 **MOTOROLA SOLUTIONS**