



**OPTIMIZED PROVISIONING FOR CRITICAL COMMUNICATIONS NETWORKS**

# MiBAS LITE MOTOROLA INTEGRATED PROVISIONING & ADMINISTRATION SYSTEM

Professional Digital Radio technology expands the possibilities for sophisticated network communications. But it also brings challenges of management, administration, control, and data integrity. To tame the complexity of radio communications with a single solution, Motorola offers you **MiBAS LITE**.

MiBAS is Motorola's provisioning and billing system for small to large-scale wireless networks. Introduced in 1994 to answer the specific needs of Public Safety and commercial Push-To-Talk operators, MiBAS has successfully supported the evolving needs of multiple customers all over the world. Standing behind MiBAS are Motorola's proven expertise and years of experience in dispatch/PTT, telephony, short data and packet data.

MiBAS LITE is a scalable and adaptable system designed to fit the complete range of Motorola radio networks. It supports provisioning and administration for dispatch, telephone interconnect and data applications for both private and shared networks ranging from regional to nationwide systems.

#### **MiBAS LITE**

- Standard support up to 25,000 subscribers, inherent upgrade path to full-blown MiBAS solution
- Comprehensive Provisioning and Customer Care
- Single server solution
- Oracle Standard database
- Full iTM interface supporting intelligent programming of TETRA radios
- Software only option offered – Customer supplies the Hardware and Oracle licenses (in accordance with requirements)

Motorola is committed to MiBAS upgradability, aligned with the evolution of the Motorola network offering.



## PROVISIONING

MiBAS LITE is a powerful automated tool for configuring radio units according to each radio's allocated services. The browser-based man-machine interfaces make it easy to manage radio profiles. For example, an operator can use MiBAS LITE profiles to apply a full set of predefined properties to a new radio all at once. And rather than provisioning radios on an individual basis, one may reconfigure and assign services by selecting and acting on multiple radios simultaneously.

MiBAS LITE then automatically reaches out to consistently update each radio's data in the MiBAS database, network elements and radio unit files, without extra effort from the operator.

**The MiBAS LITE solution covers all the necessary provisioning activities for Radio Networks;** Customer care and self care, Provisioning and activation of subscriber units.

## CUSTOMER CARE AND SELF CARE

MiBAS LITE has multi-lingual browser-based capabilities, designed for accessing the MiBAS server over the Internet or an intranet; it enables secure complete agency administration, provides a full view of all agency information and supports (via secure access) self care capabilities for activation and other provisioning transactions, allowing remote agencies to control their fleets. It also offers a range of inquiries on subscriber service configurations, and more.

The solution incorporates a complete set of APIs and Agency tickets, alerts, notes and other CRM features.

**MiBAS gives the network operator multiple provisioning capabilities:**

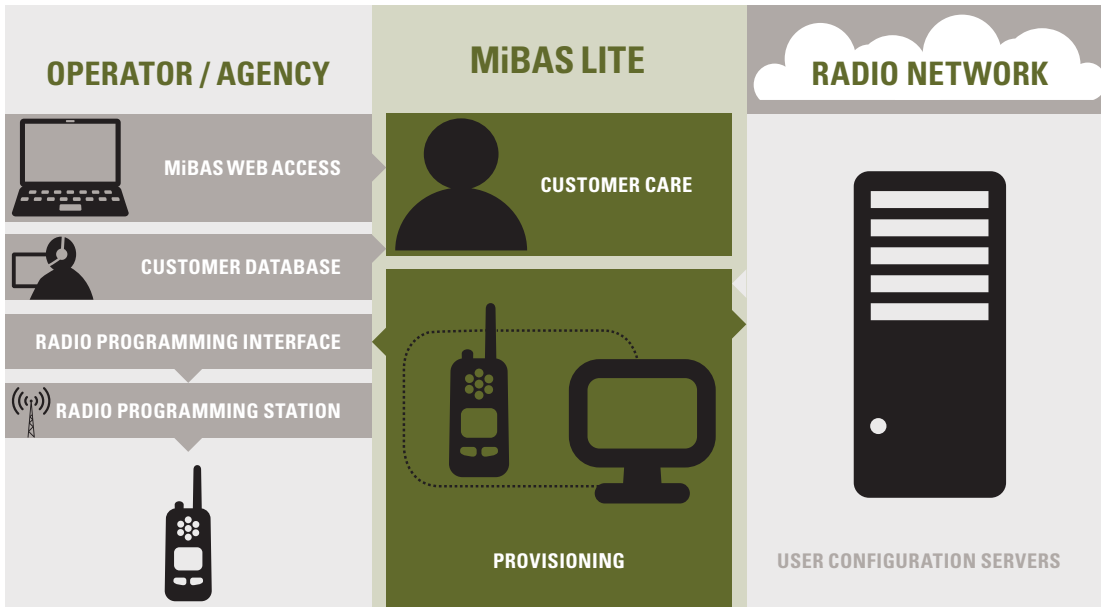
- Create and manage agencies with radios
- Activate radio (and verify proper radio configuration)
- Create Talkgroups, Multigroups and ScanLists, and associate them to radios
- Suspend / Reconnect subscription
- Add / Omit features
- Assign numbers (IP addresses, ISSIs, GSSIs, etc.)
- Replace handsets

Motorola radio networks can benefit from end-to-end automatic MiBAS provisioning by using the Dimetra IP or ASTRO Provisioning API.

## Dimetra IP Radio Programming Interface

Once radio information is entered into MiBAS LITE, an input file is generated and inserted into the ITM to ease, shorten and simplify the radio programming process.

MOTOROLA SOLUTIONS		TETRA		MiBAS Web Module						
Customers » Customer Card » Subscribers and Accounts										
Offline Reports   Normal   Debug   Log   My Profile   Help   Logout » appserver Administrator										
Customer Care   Security   Admin   FHE Queues   Mass Actions   Resource Management   MiFleet   MiAnalyzer										
Search for: Customers by Customer ID										
Customer ID: 135 Name: Informal Housin... Cluster: UCS 1										
Menu: Customer   Subscribers & Accounts   Inventory   Templates										
Mass Actions   Modify   Subscriber Report   Refresh										
Search: By File 1 2 3 4 5 >> Rows per page 10										
ISSI	Phone No.	Model	Model Name	Serial Number	TEI	State	Model Number	State Desc.	Activated	
<input checked="" type="checkbox"/>	26707	SNIPPERS	2418000	2418000	MTP8...	890TKJ6332	000129281499720	C	Active	21/05/2015 15:49:09
<input checked="" type="checkbox"/>	26708	SOONES	2418004	2418004	MTP8...	890TKJ6336	000129281499760	C	Active	21/05/2015 15:49:09
<input checked="" type="checkbox"/>	26709	SMITH	2418005	2418005	MTP8...	890TKJ6337	000129281499770	C	Active	21/05/2015 15:49:10
<input checked="" type="checkbox"/>	26710	M-VOI	2418006	2418006	MTP8...	890TKS1283	000129281663970	C	Active	21/05/2015 15:49:10
<input checked="" type="checkbox"/>	26711	G-MUA	2418007	2418007	MTP8...	890TKS1284	000129281663990	C	Active	21/05/2015 15:49:10
<input type="checkbox"/>	26712	D-CORNELIS...	2418008	2418008	MTP8...	890TKS1287	000129281664090	C	Active	21/05/2015 15:49:10
<input type="checkbox"/>	26713	ROCHERT	2418009	2418009	MTP8...	890TKS1288	000129281664110	C	Active	21/05/2015 15:49:10
<input type="checkbox"/>	26714	GANTANA	2418010	2418010	MTP8...	890TKS1289	000129281664130	C	Active	21/05/2015 15:49:10
<input type="checkbox"/>	26715	JONATHAN	2418011	2418011	MTP8...	890TKS4984	000129281677660	C	Active	21/05/2015 15:49:10
<input type="checkbox"/>	26716	WHEATLY	2418012	2418012	MTP8...	890TLJB709	000148190295480	C	Active	21/05/2015 15:49:10



## ADVANTAGES

### Multiple networks

A single centralized MiBAS LITE system can manage a cluster of networks, simplifying network operation and reducing costs.

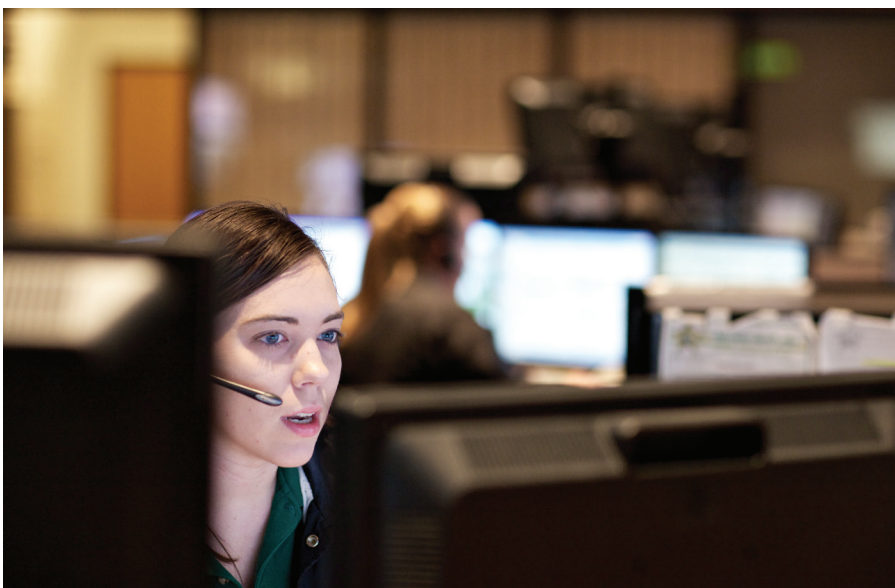
### Self care

Enterprises, police forces, or other remote administrators can add their own subscribers and perform various other provisioning tasks using the customized browser-based application. Operators improve their control, flexibility, and efficiency while activation becomes quicker, cheaper and more customer-friendly.

### Consolidated database

MiBAS LITE manages all relevant agency (structure and hierarchy) and radio information in a single database, integrated with the network and radio unit information. The result – reliability and smooth operation.

- Provides a web-based multi-lingual application for remote customer care, provisioning and inquiries
- Enables mass provisioning actions as opposed to the one-by-one practice
- Facilitates radio provisioning
- Supports current network features and is committed to support future functionality
- Supports radio programming





**RIGHT NOW**   
**WE**  **ARE**  
 **HELPING**  
**PEOPLE**  **BE**  
**THEIR BEST**   
 **IN THE**  
**MOMENTS**   
 **THAT**   
 **MATTER** 

For further information please check our website:  
[www.motorolasolutions.com/en\\_xu/products/mibas.html](http://www.motorolasolutions.com/en_xu/products/mibas.html)  
or contact us at: [mibas.marketing@motorolasolutions.com](mailto:mibas.marketing@motorolasolutions.com)

MOTOROLA, MOTO, MOTOROLA SOLUTIONS, the Stylized M Logo, Dimetra and MiBAS are trademarks or registered trademarks of Motorola Trademark Holdings, LLC and are used under license. All other trademarks are the property of their respective owners. © 2015 Motorola Solutions, Inc. All rights reserved.