



**ENTERPRISE** COMMAND CENTER SOFTWARE

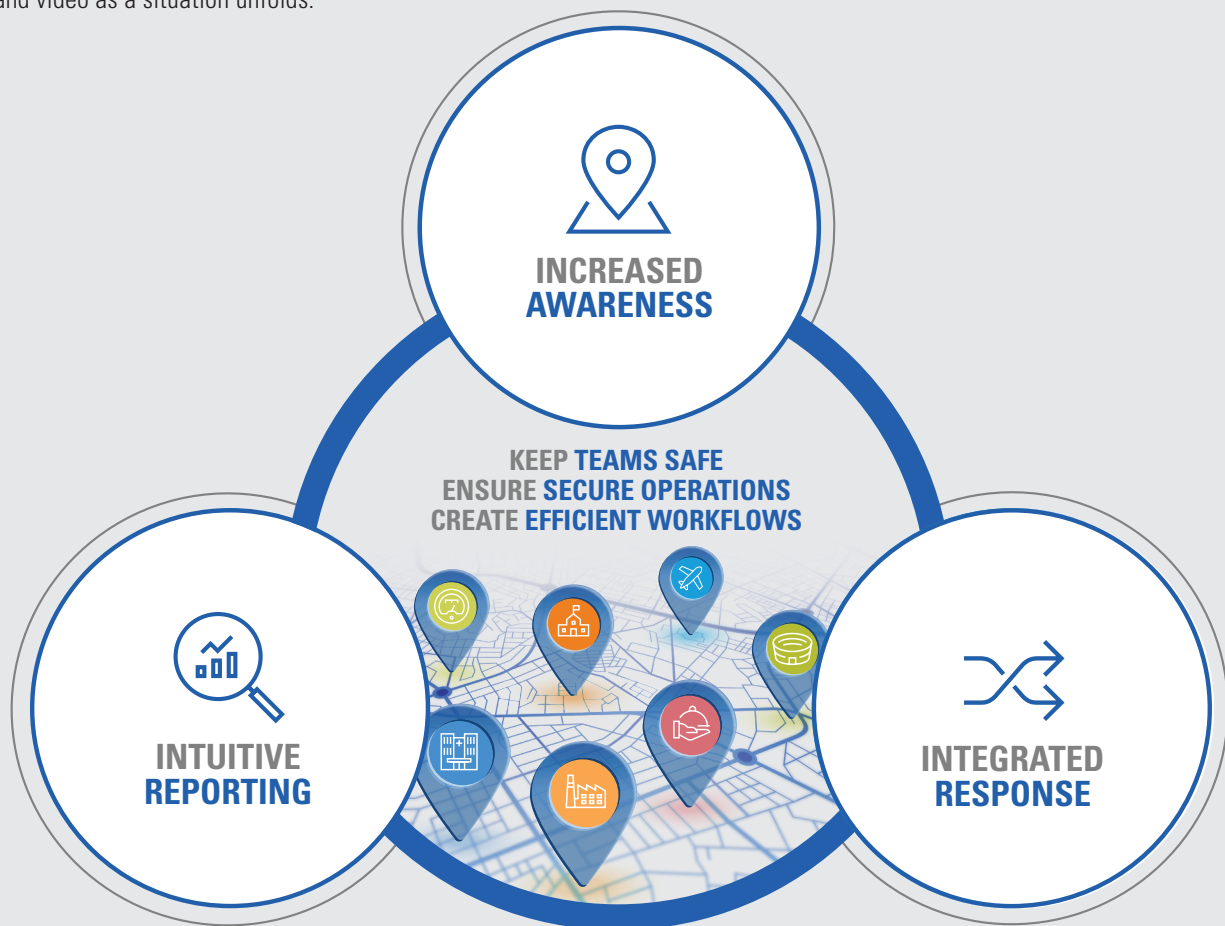
# KEEP YOUR TEAM SAFE & YOUR ORGANIZATION EFFICIENT AND SECURE



# A PURPOSE-BUILT SOFTWARE PLATFORM

Organizations are experiencing increased pressure to improve operations despite continuously constrained resources. In response, enterprises are taking innovative measures to shift focus from reactive to proactive management and response of security operations. The moment a call for service, access alert or automated sensor is initiated, an influx of data ensues: field personnel GPS location, incident specifics, live video feeds and more. To bring together and to make sense of multiple data sources, you need a software portfolio that streamlines and automates workflows for a cohesive approach to personnel, incidents and video as a situation unfolds.

Our proven, purpose-built Enterprise Command Center Software portfolio strengthens and streamlines your security operations all the way from detection through to response and resolution - keeping teams safe and your organization efficient, productive and secure. Trust in a partner that is dedicated to designing and delivering the innovative solutions your team can rely on, in both the everyday and critical moments.



**SIMPLIFIED, STREAMLINED SECURITY OPERATIONS FOR EVERY INDUSTRY**



DETECT

ANALYZE

COMMUNICATE & RESPOND

REPORT



# FROM **DETECTION** THROUGH **RESPONSE** AND **RESOLUTION**

Give your team the intelligence and tools they need to proactively recognize, understand and respond to everyday disruptions and emergency situations, bring clarity to decisions and simplify collaborative workflows.

Connect, secure and streamline your security operations with easy-to-use device location mapping and incident alerting as well as incident records and dispatch management to communicate instantly across devices.



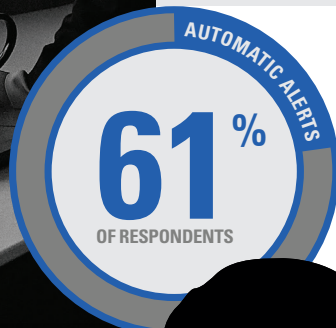
# INCREASED AWARENESS

Improve visibility to personnel and operations with immediate access to streaming video, real-time alerts, advanced data analytics, location tracking and records information from a single, real-time map.

## CommandCentral Aware

View and interpret multiple data sources on a single map, including camera locations, CAD incidents, alerts and personnel status via GPS location, providing a real-time, consolidated operating picture to inform decision making as well as be alerted to incidents as they arise.

You can shape your response using insights from real-time video monitoring and create rules to prompt automated actions based on specific event triggers. Access nearby video feeds from the Aware map for greater visibility into an escalating situation. Keep your team informed from virtually anywhere with access via a web browser on any computer as well as from real-time mapping and event monitoring on any internet-enabled tablet or smartphone.



COMMUNICATION OF AUTOMATIC ALERTS RANKED "IMPORTANT" FOR ENTERPRISE BUSINESSES POLLED IN A RECENT COMMERCIAL SURVEY.

Source: MSI 2021 Commercial Markets survey



Being able to have full visibility and operational awareness across our schools and campuses helps keep our students, faculty and administrators safe and secure and allows them to stay focused on learning.

Newark School System



# INTEGRATED RESPONSE

Connect teams instantly across devices and networks to keep everyone informed - all while organizing a coordinated response - resulting in increased collaboration and faster, more confident decision making.



### Rave Mobile Safety

In an emergency, your ability to maintain operations while also protecting individuals and property rests on your capacity to quickly alert and assemble critical resources. Yet, an increasingly mobile and tech-driven workforce has rendered manual and singular-forms of communication ineffective.

To keep your team connected when it matters most, you must have fast, reliable technology. The Rave platform allows you to quickly and easily relay crucial information to and from employees, teams and the community using text, voice and email.



### Avtec Scout

Dispatch and coordinate activities of security personnel using a scalable, reliable and proven console. The Avtec Scout voice dispatch console provides impressive overall compatibility with leading radio, telephony, push-to-talk technologies and more. Build your best-of-breed communications platform with Scout at the center.

By selecting among four models that can be mixed and matched across your network, you can ensure your dispatchers are always equipped with the right consoles for their jobs - whether simple, highly complex or somewhere in between. The Scout suite scales from one console to hundreds, so you can count on a solution that grows with you over time, including single-site, multi-site or mobile configurations.



### WAVE PTX™ Broadband Push-to-Talk (PTT)

Eliminate barriers between radio users and those on broadband devices to let everyone on your team be part of the conversation. WAVE PTX is a carrier-independent broadband PTT service that uses the cloud to extend instantaneous private and group PTT communication to phones, tablets and PCs, helping enterprises like yours get more done, faster.

The WAVE PTX Mobile application enhances team communication by combining the speed and simplicity of PTT with the ability to share details via text, photos, videos or documents, all at the push of a button. As a result, users communicate more effectively wherever and whenever needed, and organizations of all sizes benefit from the increased efficiency, improved productivity and greater collaboration WAVE PTX provides.



**COMMUNICATION ACROSS DIFFERENT DEVICE TYPES DEEMED "IMPORTANT" BY COMMERCIAL SURVEY RESPONDENTS.**

Source: MSI 2021 Commercial Markets survey



# INTUITIVE REPORTING

Capture and document incident information in real time across multiple devices, analyze incident trends using built-in reports and act on improved insights for more proactive security planning and operations.



**WITH LIMITED RESOURCES AND EXPANDED TASKS AND GOALS, AUTOMATION IS A KEY TREND FOR ENTERPRISES IN 2022, ACCORDING TO THE INDUSTRY TRENDS REPORT.**

Source: Global Marketing Automation Market, 2022

## Ally Incident Management Software

Streamline all of your security incident and records management, event and compliance reporting and communications with one, easy-to-use platform that provides quick access to complete and accurate data throughout your organization.

Enhance and simplify security operations with Ally's easy-to-use device location mapping, as well as the platform's incident records and dispatch management to communicate instantly across devices and make proactive decisions.

With Ally, you can make the most of your organization's records by attaching an unlimited number of images, documents, audio and video files to incident records and log entries. Quickly access all of your critical data directly from any web-enabled device, seamlessly share information among personnel and visually track trends in incident locations throughout your secured facilities. Use Ally's built-in analytics and reports to enhance your team's decision-making and situational awareness.



**Ally had the features we were looking for...with the flexibility we needed for expansion and growth.**

Tesla



**With Orchestrated, we have preconfigured, automated operational workflows that direct critical information to the right source and the right people - at the right time. It's a game-changer for us.**

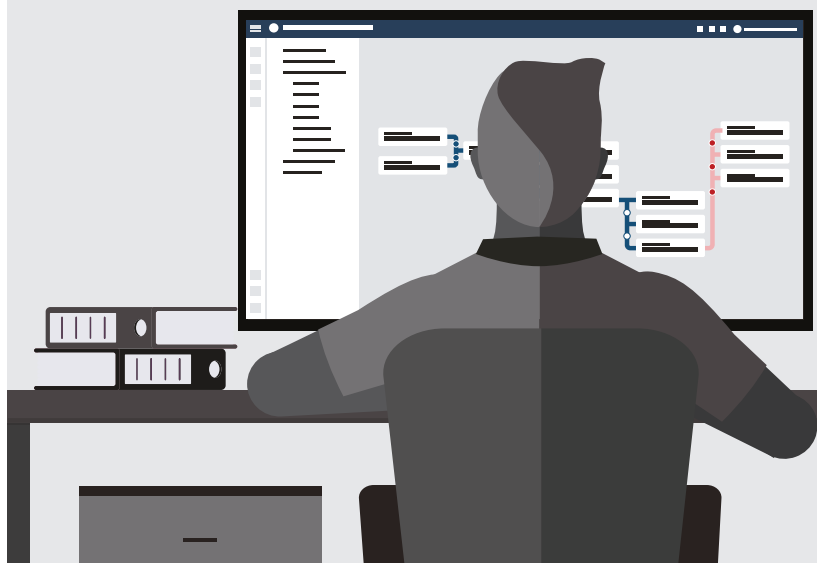
Hamilton Township Schools

## Orchestrated

Configure and automate the workflows that control your integrated security technology ecosystem with simple, user-friendly and cloud-based interface software.

These intelligent, automated workflows enhance your organization's efficiency as well as improve response times, effectiveness and overall personnel safety. Orchestrated equips your security network operations teams with the capabilities they need to detect triggers across a number of installed devices and quickly take actions to reduce risk of breaches and downtime by automatically alerting the appropriate teams and executing the proper procedure.

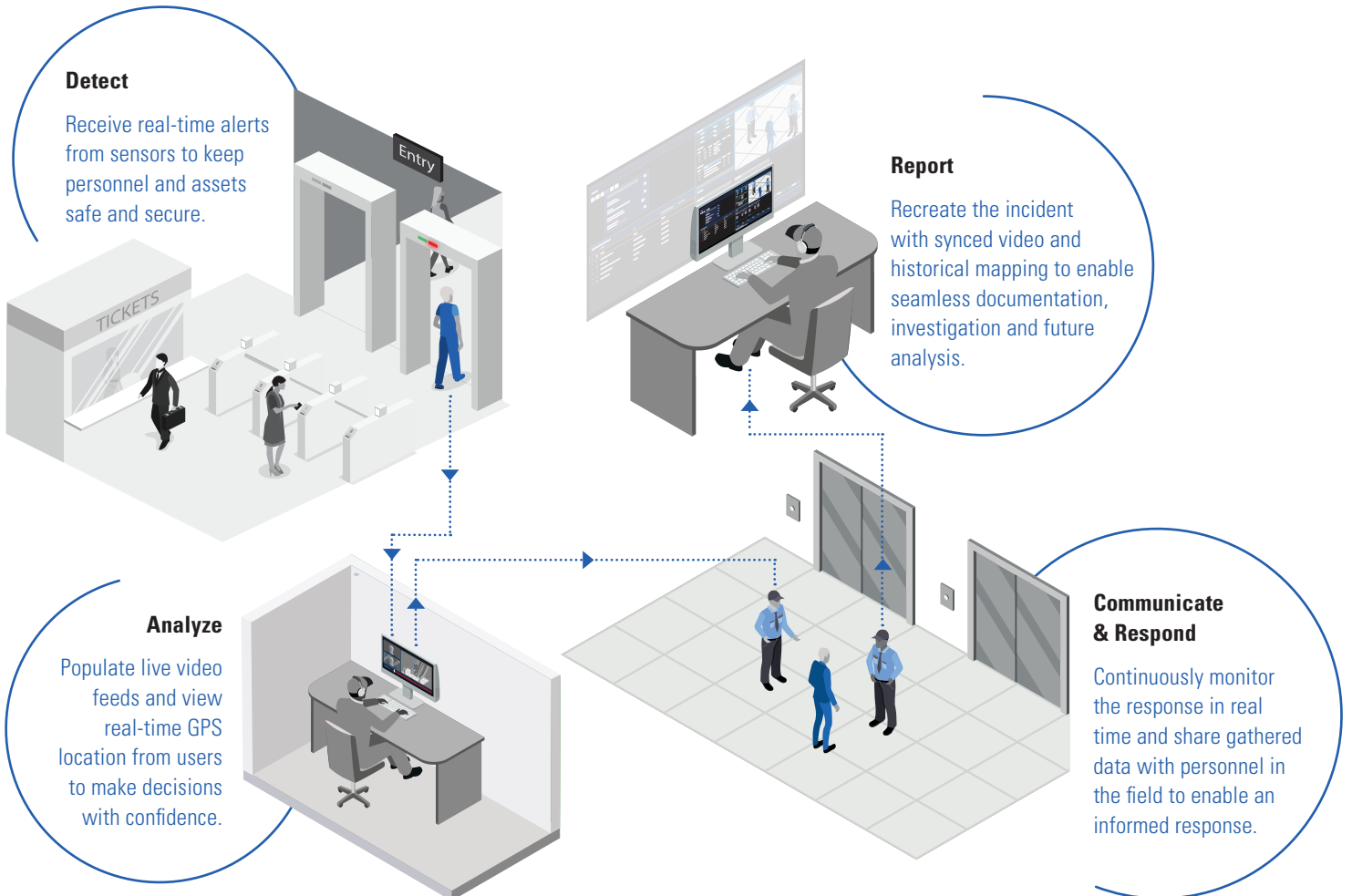
Orchestrated makes managing your day-to-day operations effortless by providing a self-service workflow management tool at your fingertips.



# CENTRALIZE DATA ACROSS EVERY STAGE OF YOUR WORKFLOW

Our proven, purpose-built Enterprise Command Center Software is designed to bring consistency to your security operations data, response, workflows and user experience. This allows you to detect and analyze events through increased awareness and immediately communicate data with an integrated response in any situation.

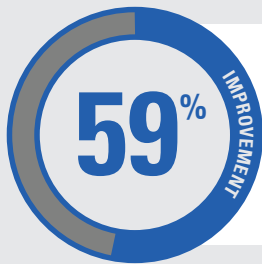
Each enterprise software application is designed for consistency and collaboration, so your teams can benefit from simpler workflows and superior outcomes through the four pillars: Detect, Analyze, Communicate & Respond, and Report. Here is how these pillars work together to address your security challenges.



# AN INTEGRATED TECHNOLOGY ECOSYSTEM FOR ENTERPRISE SECURITY

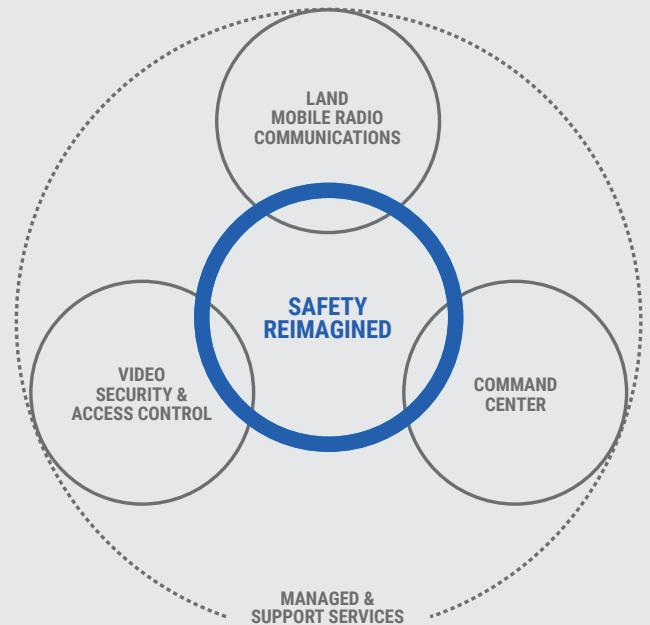
Unify voice, data, video and analytics into one, integrated platform - enabling individuals, businesses and communities to work together in more powerful ways.

Motorola Solutions' **critical communications** infrastructure and devices are trusted all over the world. We harness instant voice and data to connect across teams, functions and locations for a coordinated response to each and every event.



**ENTERPRISES THAT DEPLOY UNIFIED SOLUTIONS NOTE IMPROVEMENT IN RESPONSE TIMES.**

Source: MSI 2021 Commercial Markets survey



**Enterprise Command Center Software** is built for mission and business-critical environments. It is integrated end-to-end for seamless collaboration, from event onset to resolution, helping your organization realize safer cities and workplaces.

Our **video security and access control** solutions provide unprecedented situational awareness. They help your teams instantly focus attention on what's important, so they can identify risks and uncover opportunities a human might overlook.

## STRENGTHEN AND STREAMLINE YOUR ENTERPRISE OPERATIONS

Enterprise Software is part of the Motorola Solutions first and only end-to-end security technology ecosystem that unifies voice, video, data and analytics on a single platform. Our ecosystem provides you with the foundation of safety you need by addressing the unique challenges of your organization.

Whether business-critical or everyday events, Enterprise Command Center Software allows you to make proactive decisions that move your security operations forward with easy-to-use applications from detection through resolution. Today, there's a better way to keep people, assets and operations safe.

To learn more about Enterprise Command Center Software, visit:  
[www.motorolasolutions.com/enterprisecommandcentersoftware](http://www.motorolasolutions.com/enterprisecommandcentersoftware)



Motorola Solutions, Inc. 500 West Monroe Street, Chicago, IL 60661 U.S.A. 800-367-2346 [motorolasolutions.com](http://motorolasolutions.com)

MOTOROLA, MOTO, MOTOROLA SOLUTIONS and the Stylized M Logo are trademarks or registered trademarks of Motorola Trademark Holdings, LLC and are used under license. All other trademarks are the property of their respective owners. © 2023 Motorola Solutions, Inc. All rights reserved. 09-2023 [JP09]