

THERE'S MORE TO CONSIDER

STREAMLINED MULTI-JURISDICTIONAL DATA SHARING

Flex enables agencies to seamlessly share information between neighboring jurisdictions, while still preserving individual agency standards and data integrity. More than 90 percent of Flex customers share data in a multi-jurisdictional environment.

FLEXIBILITY THROUGH OFF-THE-SHELF MODULES

Flex allows agencies to choose from 60 ready-made modules to build a software system that works best for their agency's needs and pain points, while still benefiting from off-the-shelf pricing and flexible configurations.

QUICK ACCESS TO CRITICAL DATA

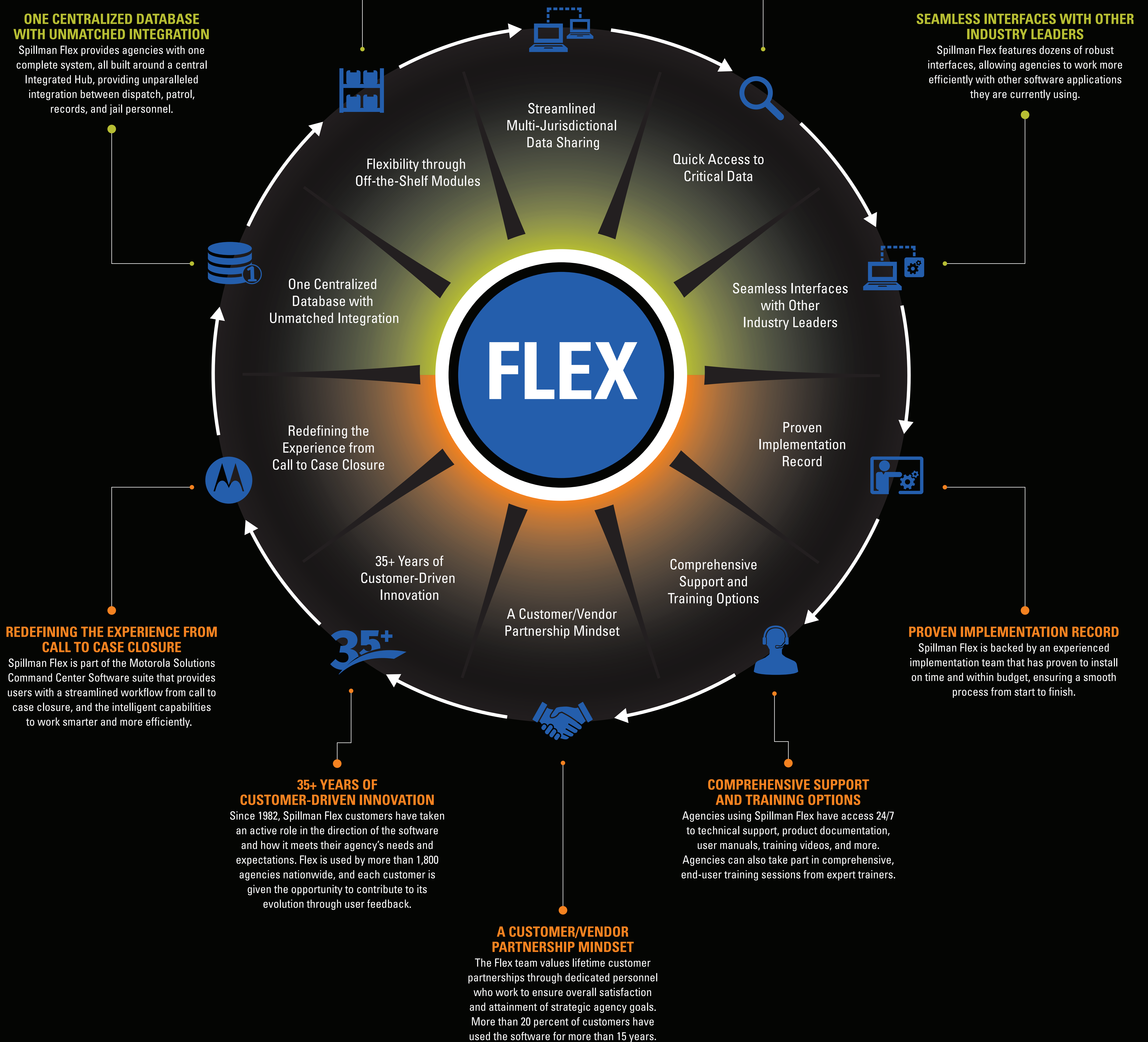
With the Integrated Hub, users have quick and easy access to all records within their agency's database from anywhere within the system. Personnel can search multiple record sources at once, reducing response time and dependence on report-writing personnel.

ONE CENTRALIZED DATABASE WITH UNMATCHED INTEGRATION

Spillman Flex provides agencies with one complete system, all built around a central Integrated Hub, providing unparalleled integration between dispatch, patrol, records, and jail personnel.

SEAMLESS INTERFACES WITH OTHER INDUSTRY LEADERS

Spillman Flex features dozens of robust interfaces, allowing agencies to work more efficiently with other software applications they are currently using.



MOTOROLA SOLUTIONS