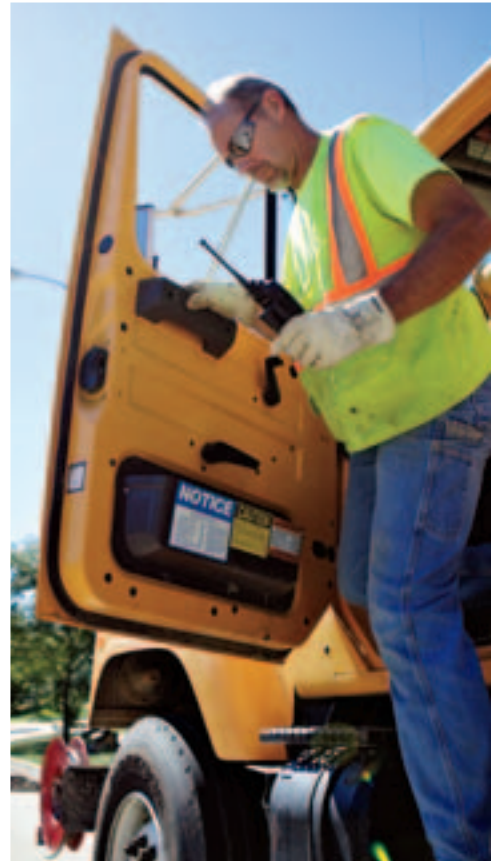


# MOTOTRBO™ REMASTER YOUR WORKFORCE WITH THE RIGHT SOLUTION



# HELP TEAMS WORK BETTER AND FASTER, TOGETHER

Your people are on the factory floor, at the front desk, moving across campus or around the country. Hauling freight or handling emergency repairs, MOTOTRBO connects them instantly and efficiently, everywhere they go.

Whether they need ultra-thin portables or extra-tough mobiles, integrated Bluetooth® or industry-leading data applications, we have the right solution to fit your workforce now, and evolve as your enterprise grows.

More than a progressive portfolio, MOTOTRBO is a complete and expertly integrated solution of portable radios, mobile radios, repeaters, data applications, accessories, software and services. MOTOTRBO puts the right solution into the hands of the right user – to make decisions easier, efficiency better, safety greater and productivity higher. And that can transform your enterprise.

## MANY USERS. DIFFERENT DEVICES. MULTIPLE LOCATIONS. ALL MOTOTRBO.



### TRANSPORTATION COMPANY

#### 08:14:04 CUSTOMER REQUEST

A major customer needs to reroute freight to a warehouse on the other side of the city.

#### 08:20:10 DRIVERS ENROUTE

The supervisor instantly locates his delivery crews via GPS tracking software on their MOTOTRBO system and quickly notifies them of the route change.

#### 08:22:16 COMMUNICATE HANDS-FREE

The drivers confirm the route change using their DM4801 mobile radios with integrated Bluetooth® and their Operations-Critical Wireless earpieces for safe, hands-free communication.

#### 08:24:12 DIRECTIONS SENT

Dispatch text messages the address and directions to drivers and confirms the required route change.

#### 08:28:05 WAREHOUSE ALERTED

The supervisor uses his DP4800 radio to confirm all drivers are enroute to the warehouse.

#### 09:27:22 DELIVERY CONFIRMED

The drivers arrive at the warehouse and use their wireless Bluetooth scanners to scan packages as they are removed from the vehicle. Delivery is confirmed to dispatch through their radios as packages are scanned.

## MANUFACTURING PLANT

### 19:47:01 EQUIPMENT FAILURE

A machine in operation suddenly stops. The quality manager is instantly alerted of the malfunction via automated work ticket software. He easily reads the message on the five-line colour display of his SL Series portable radio.

### 19:48:04 TEAM ALERTED

The quality manager uses the one-touch button on the side of his radio to pull up his contacts list and quickly communicates to the maintenance technician on the factory floor.

### 19:49:15 RESPONSE INITIATED

Equipped with a rugged DP4800 portable radio and heavy-duty headset, the maintenance technician receives the communication. Even with the loud noise on the factory floor, Intelligent Audio in his radio automatically adjusts the volume to ensure he can hear the important message clearly.

### 20:14:28 DOWNTIME MINIMISED

Equipment is back online. With 12 hour battery life and IMPREST™ technology in all DP Series radios, communication is continuous, even with extended shifts.



## UTILITY COMPANY/PUBLIC SERVICE

### 15:30:04 FAST-MOVING STORM

Heavy rain and strong winds topple trees along a local highway, knocking down power lines and scattering debris all over the road.

### 15:35:10 DISPERSED MOBILE WORKERS

As calls come in, dispatch locates the crews out in the field with GPS location tracking.

### 15:37:12 CREWS NOTIFIED

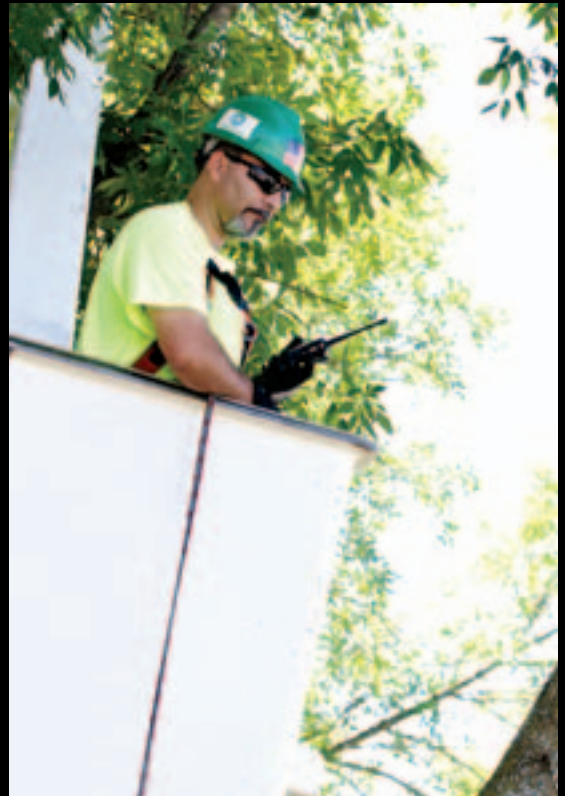
An emergency notification is sent out via text and a voice call is dispatched to their large field force over their MOTOTRBO Linked Capacity Plus system.

### 16:15:26 CREWS ON SITE

Using their DP4800 portables and remote speaker microphones with Intelligent Audio, crews are able to communicate clearly over the noise of chainsaws, trucks and weather as they tackle debris and repair power lines.

### 18:20:48 POWER RESTORED

Power is restored and crews log the incident and resolution via their tablet PC. The tablet connects wirelessly to the DP4800 portable via Bluetooth and sends the information to dispatch.



# DO MORE, MORE SAFELY WITH MOTOTRBO PORTABLES



## DP2000 SERIES DIGITAL, NOW WITHIN REACH

Digital is now within reach with the industry's most scalable digital radio solution. The DP2000 Series is the smart way to invest in a two-way radio that delivers the unparalleled benefits of TDMA digital technology – from Intelligent Audio to longer battery life. You get an analogue interoperable system that lets you move to digital at your own pace, at a value you'll appreciate.



## DP4000 SERIES YOUR VOICE JUST GOT A LOT STRONGER

Take your enterprise further with the DP4000 Series. These fully-featured portables deliver unrivalled voice and data communication with integrated Bluetooth audio and data, integrated GPS and text messaging, full colour displays with day/night mode to make reading work order tickets and text messages easier. The radio provides best-in-class audio with Intelligent Audio that automatically adjusts volume to overcome background noise.



## SL SERIES DIGITAL HAS NEVER LOOKED BETTER

Stay instantly connected and in control with this ultra-thin, ultra-light portable for the ultimate in discreet communication. The SL4000 optimises data applications – from enhanced work ticket management to text messaging on a large, full-colour screen that's easy to read. With advanced capabilities like covert mode, integrated Bluetooth data and Intelligent Audio, and a smartphone-slim size, it's unlike any radio you've ever used.

## WHY TDMA DIGITAL?

- Crystal-clear audio without background noise or static
- Integrated voice and data applications on one device
- Lower infrastructure costs
- Up to 40% longer battery life for extended work shifts
- Twice the voice capacity in a 12.5 kHz licensed channel

## BE READY WITH THE RIGHT STANDARD

MOTOTRBO complies with the globally-recognised European Telecommunications Standard Institute (ETSI) Digital Mobile Radio (DMR) Tier 2 standard for professional two-way radio users.

DMR is widely supported by the leading two-way manufacturers in the industry and is the most widely deployed digital mobile radio technology worldwide.



# KEEP CREWS WELL-CONNECTED WITH **MOTOTRBO MOBILES**



## **DM4000 SERIES**

### **ENJOY UNRIVALED VOICE AND DATA EVERYWHERE**

Move your business beyond voice with the feature-rich DM4000 Series. These powerhouse mobiles deliver unrivaled voice and data communication with integrated Bluetooth audio and data, integrated GPS and text messaging, full colour displays with Day/Night mode to make reading work order tickets and text messages easier, and best-in-class audio with Intelligent Audio that automatically adjusts volume to overcome background noise.

# STAY IN CONTINUOUS CONTACT WITH **MOTOTRBO REPEATERS**



## **DR 3000 REPEATER**

### **SWITCH BETWEEN ANALOGUE AND DIGITAL SEAMLESSLY**

Maximise the performance of your MOTOTRBO system with the DR 3000 Repeater. It features dynamic mixed mode capability to automatically switch between analogue and digital mode with two simultaneous voice or data paths in digital mode, doubling capacity without additional equipment.



## **MTR3000 BASE STATION / REPEATER**

### **EXTEND COVERAGE AND CAPACITY EASILY**

The MTR3000 is a 100-watt, continuous duty base station/repeater that operates in digital mode in MOTOTRBO Conventional, IP Site Connect, Capacity Plus, Linked Capacity Plus and Connect Plus systems. The MTR3000 can also operate in analogue mode for conventional systems.

## **KEEP YOUR TECHNOLOGY IN TOP CONDITION**

MOTOTRBO radios and repeaters are fully backed by a two-year standard warranty with 1-year warranty for batteries and accessories.

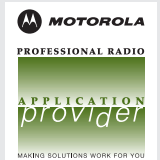
For complete peace of mind, Service from the Start provides multi-year coverage against normal wear and tear - and more. It offers fast repair turnaround times and expert telephone technical

support; all backed by Motorola's globally integrated services infrastructure, highly qualified support technicians and certified repair facilities. Service from the Start with Comprehensive Coverage provides even greater support with the additional benefit of coverage against accidental breakage.

# BE IN-TOUCH AND UP-TO-THE MINUTE WITH **MOTOTRBO APPLICATIONS**

Take your business beyond voice and ensure all your people stay connected with the speed and efficiency of data. Whether sending a text message to crews doing road repairs or using the integrated GPS module to manage your taxi fleet, MOTOTRBO makes response time more immediate, customer service more effective and your operation more productive.

With the industry's largest Application Developer Program, MOTOTRBO supports a wide range of data applications to expand communication beyond voice. Plus, you can work directly with third-party developers or your IT staff to create customised applications for your unique needs.



## **ENHANCE SAFETY AND ACCOUNTABILITY**

GPS location tracking allows efficient tracking of workers, vehicles, and business assets to enhance safety and productivity.

## **ACCELERATE RESPONSE TIME**

Work order ticket management solutions help expedite resolution of customer issues, enhance the efficiency of personnel responding to issues, and generate reports to create efficient work flows.

## **STAY IN CONTROL**

Conveniently monitor machine or facility alarms, and remotely control doors with advanced telemetry solutions.

## **MOBILISE YOUR TEAMS**

Effectively manage fleet operations and extend access to radio functions via an IP connection from remote locations.

## **STAY CONNECTED**

Send and receive text messages and emails directly from your MOTOTRBO radio. Enhance worker safety and productivity by integrating with phone systems to make phone calls in places where mobile phone coverage is not available.

## **CONNECT WITH OTHER DEVICES**

Interoperate seamlessly with technologies such as other radio systems, telephony systems and mobile computing devices.

## **LIFE-SAVING SOLUTIONS**

Enhance worker safety with lone worker and man-down emergency alarms. These solutions integrate with location tracking solutions and can emit tones from the radio to allow the radio to call for help when a worker can't.



# REACH EVERYONE, EVERYWHERE WITH **MOTOTRBO SYSTEMS**

Want to increase the number of users on your system or extend coverage to another site? Connect workers in different locations or access voice and data without adding new frequencies? MOTOTRBO has a scalable system that fits your workforce and your facilities.

## **CONVENTIONAL SYSTEMS**

Benefit from the best of two-way radio with digital technology and enjoy integrated voice and data communication, increased capacity, enhanced features, exceptional voice quality and extended battery performance.

## **IP SITE CONNECT**

Use the Internet to extend MOTOTRBO's voice and data capabilities. Link up to 15 sites at geographically dispersed locations, create wide-area coverage or enhance coverage at a single site with physical barriers.

## **CAPACITY PLUS**

Opt for this single site digital trunking system to maximise the capacity of MOTOTRBO. Use it for a high volume of voice and data communications and link over a thousand users at a single site.

## **LINKED CAPACITY PLUS**

Expand the capacity and extend the coverage of MOTOTRBO with this digital trunking system. It leverages the high capacity call management of Capacity Plus, with the wide area coverage capabilities of IP Site Connect, to keep your staff at various locations connected with an affordable wide area trunking solution.

## **CONNECT PLUS**

For even larger systems, keep your mobile workforce connected with this scalable, multi-site digital trunking system. Queue calls during busy times until an open channel is available, assign important users priority status when the system is in high demand, and use a wire-line console for centralised dispatch.

# HEAR CLEARER AND WORK SMARTER WITH **MOTOTRBO ACCESSORIES**

## **RADIO ACCESSORIES EXTEND PERFORMANCE**

Whether you're working in harsh conditions, noisy environments, long shifts or looking for discreet communication, MOTOTRBO accessories and batteries stand up to the task and stand out in the field. Time after time, in lab test after test, they outperform leading brands. Our complete portfolio, including wireless Bluetooth earpieces and industry-exclusive IMPRES technology, is designed to perform optimally with our MOTOTRBO radios.

## **IMPRES MAXIMISES BATTERY LIFE**

For the utility crew working overtime to restore power, the job stops when the radio stops operating. IMPRES chargers evaluate battery usage and determine the best time to recondition it, ensuring you get the most out of every battery. IMPRES batteries can also be left in IMPRES chargers for extended periods without heat damage from the charger, so your batteries are ready to go when you need them.

## **EXCEPTIONALLY CLEAR AUDIO WITH IMPRES ACCESSORIES**

IMPRES audio accessories communicate with the radio to help suppress ambient noise, improve voice intelligibility and amplify loudness – even in noisy situations and harsh weather. So if you're a security officer with an IMPRES remote speaker microphone or a hospitality manager wearing an earpiece, you can carry on a conversation with clarity, simplicity and certainty.



## **EXPERIENCE MORE FREEDOM WITH BLUETOOTH**

Bluetooth accessories make communications even more convenient giving you freedom to take your radio off your belt or move around your vehicle (within 30 feet) and still stay connected. Drivers can check on packages in the back of the truck or hotel receptionists can leave the radio on the desk, yet still send and receive critical radio communications.

## **QUICK-RELEASE ACCESSORY CONNECTOR**

The DP2000 Series features a uniquely designed connector so accessories can be quickly and easily attached and detached with one hand, and an innovative new locking feature connects the accessory without any tools required.



MOTOTRBO is remastering digital two-way communications – and redefining what customers expect from a radio solution. With the MOTOTRBO portfolio of portable and mobile radios, repeaters, data applications, accessories, software and services, you can put the right device into the hands of the right user. From the supervisor of a production line, to the facilities manager in a crowded stadium, to the technician repairing power lines, MOTOTRBO radios make workers more efficient and productive.

For more information on how to remaster your workforce with the right solution, visit [www.motorolasolutions.com/mototrbo](http://www.motorolasolutions.com/mototrbo) or find your closest Motorola representative or authorised Partner at [www.motorola.com/Business/XU-EN/Contact\\_Us](http://www.motorola.com/Business/XU-EN/Contact_Us)

**MOTOTRBO**  
DIGITAL  
REMASTERED.

Distributed by:

---

---

MOTOROLA, MOTO, MOTOROLA SOLUTIONS and the Stylized M Logo are trademarks or registered trademarks of Motorola Trademark Holdings, LLC and are used under license. All other trademarks are the property of their respective owners. © 2012 Motorola Solutions, Inc. All rights reserved.

Motorola Solutions Ltd. Jays Close, Viables Industrial Estate, Basingstoke, Hampshire, RG22 4PD, UK

UK\_MOTOTRBO\_Solution\_Brochure (09/2012)

