



MOTOROLA TETRA SOLUTIONS

YOUR LIFELINE WHEN TIME IS CRITICAL





IT'S FAST APPROACHING...

The moment between safe and unsafe, capture or escape, controlled or uncontrolled, take-off or aircraft grounded, delivered or delayed. One short space of time when communication makes all the difference between a successful mission and a failed one.

ARE YOU READY?

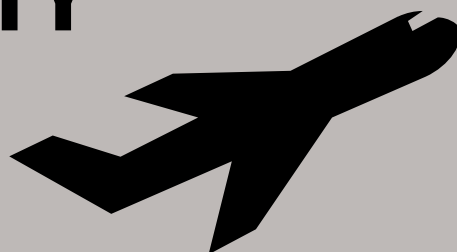
When clear, secure and near instant communications are called for, **Motorola TETRA Solutions respond every time.**

YOUR LIFELINE WHEN TIME IS CRITICAL

ALWAYS ON DUTY

You're never without back-up with Motorola TETRA Solutions. Whether investigating an abandoned building, responding to an alarm or ensuring trains are running on time, you're just a button push away from the valuable information you need to react to the moment.

For over twenty years, Motorola and TETRA have been synonymous with rapid response communications. We even helped write the TETRA standard and deploy the first system. Since then, continuous innovation has enabled us to create an unmatched range of applications, radios and infrastructure products and supporting systems including the world's safest ATEX radio and smallest TETRA radio.



ALWAYS READY TO RESPOND

We listen to what our customers want and respond with consistent advancement and improvement in public and emergency services communications. That's why our TETRA Solutions can be configured to meet the demanding needs of your market from special applications and accessories to radios and scalable infrastructure. That's why they include unrivalled security features capable of silencing any lost or stolen radio and make hacking virtually impossible. That's why they're designed for rugged use in extreme environments and fully upgradable to latest technology.

Your moment is on its way. With Motorola TETRA Solutions by your side, you're ready to rise to the challenge, tackle any task and report back, 'mission accomplished.'

THAT'S A MOMENT WORTH PREPARING FOR



NEW FOR 2012

MTP3000 SERIES

These radios are packed with the features which have become essential for safe and effective operations, as well as significant improvements in areas such as audio and ruggedness. The user interface is optimised for those making the transition from analogue radios and includes two controls for group and volume.

For more information on the MTP3000 Series radio, please visit us on the web at: www.motorolasolutions.com/MTP3000

YOUR LIFELINE IN TOUGH ENVIRONMENTS

SAFER
SUPERIOR AUDIO
AND INCREASED
RANGE

TOUGHER
DURABLE
CONNECTORS AND
RUGGED DESIGN

EASIER
INTUITIVE
HARDWARE
AND SOFTWARE
FEATURES



THE KEY BENEFITS OF THE MTP3000 SERIES

STAY IN TOUCH

Be safer and more effective with greater coverage and in-building performance with the high-sensitivity receiver and Class 3L (1.8W) power.

HEAR AND BE HEARD

Outstanding audio means you can be safe and effective in the most noisy and difficult environments.

BUILT FOR A TOUGH WORLD

Robust connectors withstand hard use and dirty environments. IP55 for all weather and water jet protection.

PICK IT UP AND USE IT FAST

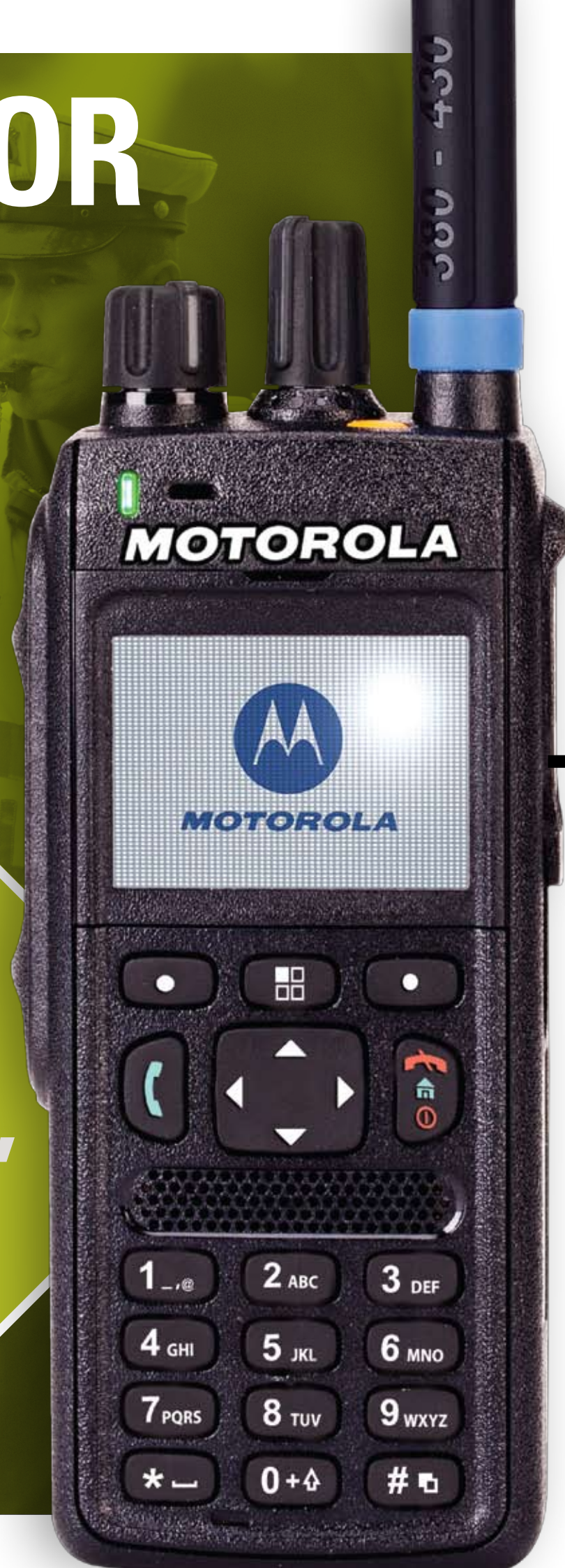
Transition quickly from analogue radios with two control knobs. Navigate quickly through the simple user interface on the clear screen.

CUSTOMISE FOR THE END USER

Tough and effective range of audio and energy accessories suitable for the same rough use as the radio.

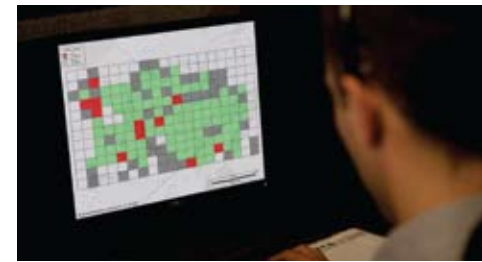
NEW FOR 2012

**MTP3000
SERIES**
**SAFER,
TOUGHER,
EASIER
TO USE**



TRACES FOR NETWORK OPERATORS

Significantly reducing your reliance on drive-testing, TRACES (our TETRA RF Automated Coverage and Evaluation Solution) enables you to effectively track network performance SLAs and proactively resolve coverage issues. Quick to install, easy to use and with significant cost savings compared to traditional monitoring techniques, TRACES helps you deliver the reliability your customers need, when and where they need it.



FIRE FIGHTING

HOW MOTOROLA IS HELPING FIRE TEAMS TACKLE BLAZES

In the heat of the moment, being able to communicate effectively and act quickly is everything. Motorola is helping firefighters with the IRIS telephone style control head, a rugged solution for easy, comfortable, high quality mission critical communications.

The control head is IP55 water resistant with a tough spiral cable that won't break or curl. It's also very comfortable to wear, enclosing the ear to minimise background noise but still small enough to fit under a helmet. Operation is really simple with a rotary knob, emergency button and LED status indicator – ideal for crisis situations. It's also easy to hold in one hand and the display can be turned for quick reading. Flexible install options including a 40 metre range and loud, clear audio make this device perfectly suited to firefighters working in noisy, dangerous environments.



NETWORK EVOLUTION

New for 2012 in Release 8 is the addition of TEDS capability to all of the Base Station and Switch platforms including MTS1 and Dimetra IP Micro. Deploying Motorola's Dimetra™ system ensures that your network is future-proof and TEDS ready, and that data will run quickly and efficiently to support you evolving needs.

TEDS

TETRA Enhanced Data Service is around ten times faster than MSPD over TETRA and opens up a whole new range of public safety applications. But this improved TETRA standard requires compatible TEDS radios, base stations and networks, making upgrading necessary. It's certainly the way forward for more capacity but for many of today's applications, Multi Slot Packet Data TETRA will work very well.

Introducing RELEASE 8

Do a lot more for a lot less with Release 8. This state of the art software for TETRA and TEDS maximises network performance while minimising cost. It provides the high capacity and security users need for effective voice and data communications in a totally future-proof design.

Release 8 costs less to acquire and run with a 70% reduction in power consumption. A significant increase in network capacity and security makes it ideal for today's data intensive, data sensitive world. But Release 8 is also ready for the future and will fully support broadband and LTE networks.

MOTOROLA TETRA SOLUTIONS



**DESIGNED TO WORK IN THE
TOUGHEST, MOST DEMANDING
ENVIRONMENTS, DAY IN, DAY OUT**

HIGHLIGHTS FOR 2012

TRUST YOUR RADIOS

TESTED IN LABS, NOT ON CUSTOMERS

When you're in the heat of the moment, you need to know the equipment in your hand is not going to let you down. We've been designing Mission Critical Communications for over 70 years and have learned that Public Safety is a tough challenge. Not just in the obvious places like a warehouse fire or an airport during a security alert. Public Safety is tough every single day of the year and we know our products need to be rugged and reliable around the clock so you can respond with confidence.

WE GO TO THE EXTREMES WITH ACCELERATED LIFE TESTING

Our ALT™ and other programmes test our radios to simulate a full five years of hard use. Five years worth of being dropped, bashed, shaken, heated, frozen, shocked and soaked. And that's not just five 'consumer' years but five 'mission critical' years of hard use.

Durability is only one half of the story. We test for toughness too. Here are two examples of standard tests we carry on all our radios to ensure rugged performance:

- **Thermal Shock Test** - Freeze to -57°C for two hours, then heat to +80°C in less than fifteen seconds and keep there for a further two hours. Repeat a further five times in 24 hours.
- **Drop Test** - Drop each of the six faces of the radio onto a smooth concrete or steel surface from a height of 1.2 meters. Repeat multiple times. The radio passes only if it continues to function throughout the test with the battery remaining attached and providing continuous power to the radio.

INTUITIVE DESIGN

Intuitive design saves time and lives. Emergency buttons located at the bottom of the antenna, just where you need it. Tactile knobs for easier turning with gloved hands. Large rotary volume dials for easier access and tactile control buttons for quicker identification. Now you're ready to face your next big challenge.

**EXPLOSIVE GAS
EXPLOSIVE DUST**

**SERVING
CUSTOMERS
SINCE 2008**



MTP850 Ex

ATEX, FM AND IEC CERTIFIED, THIS TETRA RADIO IS OPTIMISED FOR USE IN DANGEROUS AND EXPLOSIVE GAS AND DUST ENVIRONMENTS. IT CAN BE USED WHILST WEARING THICK INDUSTRIAL GLOVES AND IS AVAILABLE IN THE 800 MHZ BAND.

TCR1000 NEW ACCESSORIES

The world's smallest TETRA radio, available for users who need low visibility TETRA communications. A comprehensive and expanded set of accessories is available to optimise the unit for all types of covert operations.



MTM5400

The first of a new generation of TEDS-ready radios with integrated Direct Mode Gateway/Repeater. Planned Advanced capabilities include high-speed data connectivity, over-the-air radio management and background programming. A radio that meets the key requirements of enhanced user safety and improved operational efficiency.



INTEGRATE YOUR FLEET

Perfectly working radios are critical. So is a fast and effective terminal management system. You need total control of your fleet, wherever it's located, so you can react and coordinate resources with minimal impact to the user. Our iTM is a modular system aimed at fleets of 100 to 150,000 radios. Servers store all radio details including versions and programming data while management PCs create upgrade and configuration jobs for all or individual users. Reporting tools keep you constantly updated on your fleet and email lets you send upgrade reminders.

MTP850 S

Integrated Man Down connector, rugged side connector, IP55 and the option for 1.8W and DMO repeater for extending coverage.

YOUR LIFELINE FOR 2012 AND BEYOND

EXPECT MORE

HUNDREDS OF SOFTWARE FEATURES HAVE BEEN DEVELOPED FOR MOTOROLA TETRA RADIOS OVER THE YEARS, INCLUDING:

EFFICIENCY

- Multi-slot Packet Data to increase data speeds over TETRA for an enhanced experience of applications such as picture messaging
- Dual Control Head enabling the use of a second control head such as in the back of an ambulance or fire engine
- Secondary Common Control Channel for reduced network congestion
- RMS (Radio Messaging System) for sending high priority messages for immediate viewing

- Call out for sending near-instant high priority messages to part-time or off-duty officers and receiving notifications when they accept an assignment
- WAP Push send data or pictures for immediate display on the screen of the radio
- RUI/RUA is a key tool to control pooled radios making it possible for end users to enter a security code and automatically have access to their personal settings. The radio manager knows who is using which radio.

SECURITY

- End-to-End Encryption enabling ultra high voice and data security for special situations or agencies
- Terminal Kill, a security feature that disables radio functionality to prevent unauthorised operation of lost or stolen radios

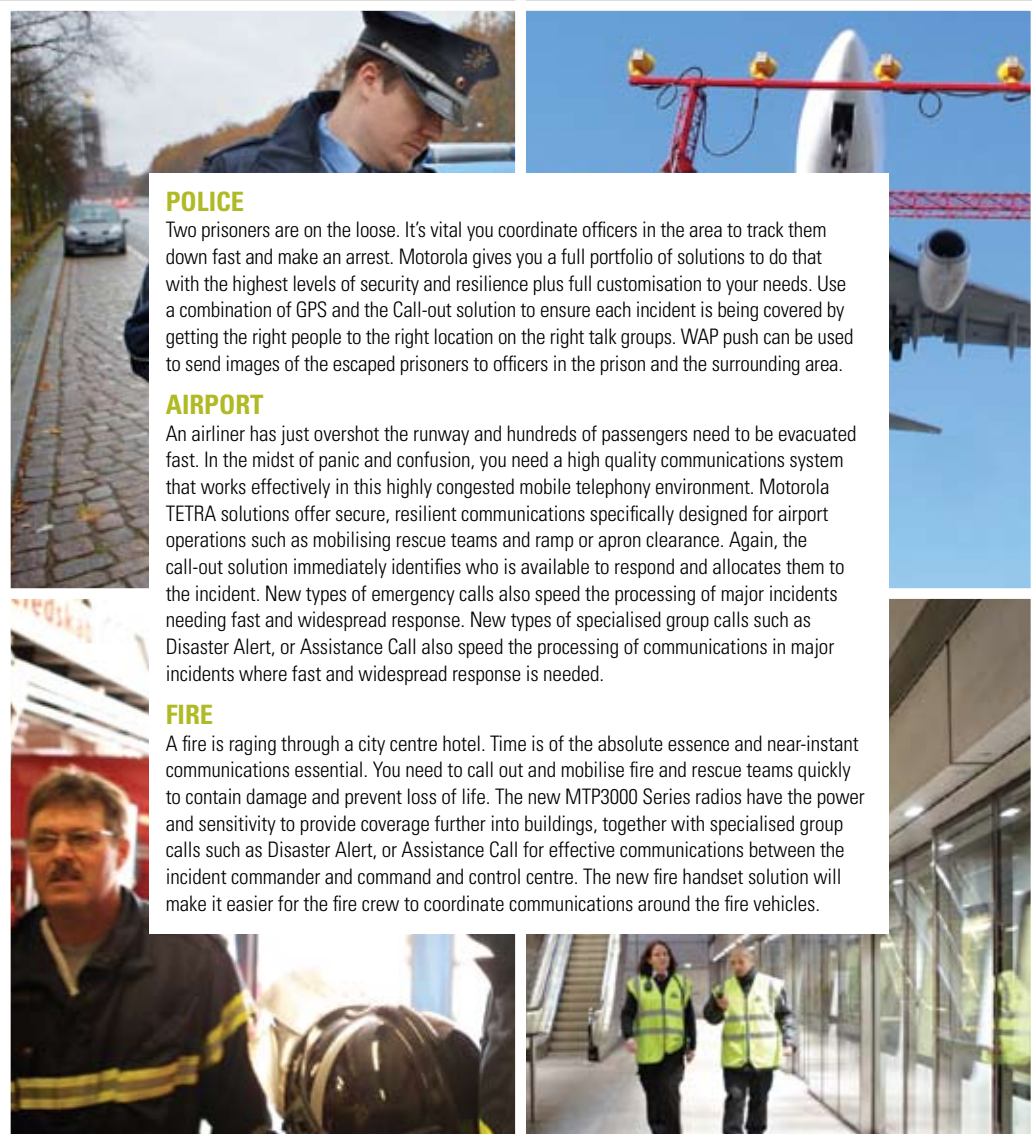
CONGESTION MANAGEMENT

- Radio and Cell Control, a family of features are available to manage how the radios are given priority access, use or are blocked from local site trunking, and work where networks overlap. Benefits include controlling congestion and ensuring that key users get priority.



MOTOROLA SOLUTIONS
**BEST TETRA PRODUCT
FOR ENTERPRISE
HIGHLY COMMENDED**

WHATEVER YOUR MISSION, YOU'RE READY



POLICE

Two prisoners are on the loose. It's vital you coordinate officers in the area to track them down fast and make an arrest. Motorola gives you a full portfolio of solutions to do that with the highest levels of security and resilience plus full customisation to your needs. Use a combination of GPS and the Call-out solution to ensure each incident is being covered by getting the right people to the right location on the right talk groups. WAP push can be used to send images of the escaped prisoners to officers in the prison and the surrounding area.

AIRPORT

An airliner has just overshot the runway and hundreds of passengers need to be evacuated fast. In the midst of panic and confusion, you need a high quality communications system that works effectively in this highly congested mobile telephony environment. Motorola TETRA solutions offer secure, resilient communications specifically designed for airport operations such as mobilising rescue teams and ramp or apron clearance. Again, the call-out solution immediately identifies who is available to respond and allocates them to the incident. New types of emergency calls also speed the processing of major incidents needing fast and widespread response. New types of specialised group calls such as Disaster Alert, or Assistance Call also speed the processing of communications in major incidents where fast and widespread response is needed.

FIRE

A fire is raging through a city centre hotel. Time is of the absolute essence and near-instant communications essential. You need to call out and mobilise fire and rescue teams quickly to contain damage and prevent loss of life. The new MTP3000 Series radios have the power and sensitivity to provide coverage further into buildings, together with specialised group calls such as Disaster Alert, or Assistance Call for effective communications between the incident commander and command and control centre. The new fire handset solution will make it easier for the fire crew to coordinate communications around the fire vehicles.

YOUR LIFELINE FOR THE CHALLENGES TO COME

RAIL

One of your key customers is desperately waiting for a consignment of stock. Falling behind schedule simply isn't an option. You need to transport those goods safely and on time and you need a rock-solid communications system in place to coordinate resources. We've worked closely with rail operators to develop complete TETRA solutions tailored to individual needs with customised passenger information and controller applications. Solutions such as AT command sets, call-out, and RUI/RUA (radio allocation) can be combined into specialised solutions for rail operators. Solutions such as AT command sets (for remotely controlling a radio in the cab of the train), call-out (for example for maintenance crews), Messaging Solutions (such as RMS), and RUI/RUA (radio allocation) can be combined into specialised solutions for rail operators.

OIL & GAS

Working on oil rigs or in gas fields is a dangerous business. Safety is paramount, which is why our TETRA solutions offer resilient wireless communications specifically adapted to these environments. Intrinsically safe radios designed for use in hazardous places with rugged styling and features that are ideal for specific needs such as pipeline monitoring. Solutions that perfectly combine the needs of safety and business efficiency, such as the highly-commended MTP850Ex ATEX radio, together with specialised accessories such as helmet mounted heavy duty headsets. In addition these radios are fitted with man-down to better protect isolated workers in hazardous areas.

THE EFFICIENCY YOU NEED, WHEN YOU NEED IT

TEDS capability is now provided in all of the Base Station and Switch platforms including MTS1 and Dimetra IP Micro. Deploying Motorola's Dimetra™ system ensures that your network is future-proof and TEDS ready and that data will run quickly and efficiently to support you evolving needs.

Time is of the essence. An effective, reliable, intuitive and easy to use communication system is vital. Many business critical users are embracing opportunities by utilising the high efficiency value, features and flexibility of the Motorola Dimetra IP family. Are you one of them?

Dimetra IP architecture has been designed for mission critical environments and can already count on over 10 years of successful deployment worldwide.

OPTIMISED FOR OPERATION CRITICAL CUSTOMERS

Dimetra IP Compact has been developed for industrial and enterprise customers looking for reliability and efficiency, as well as availability and security from their communication systems.

ENHANCED EFFICIENCY AND PRODUCTIVITY

Dimetra IP Micro/LiTE extends benefits and optimises performance for industrial and commercial customers. Ideal for companies looking for lower cost of ownership, an easy migration path from existing analogue systems to digital trunking solutions and more accurate management of resources.

Customers who already have an installed analogue base could combine a Motorola TETRA solution with their existing network as part of a plan to phase out or redeploy analogue units over time.

The ground breaking MTS1 features a compact and robust design for easy transportation and rapid indoor or outdoor installation.

RELEASE 8 DOES A LOT MORE FOR A LOT LESS

Release 8 gives users the networking support they need to maximise performance and minimise cost. This power efficient software for base stations supports both Dimetra TETRA and TEDS, providing cutting edge voice and data applications with reduced space requirements and best ever energy efficiency. It's a solution that's ready for future-proof IP communications over Ethernet.

- Lower total cost of ownership
- More capacity, more security
- Ready for the future

Less Cost

Release 8 does a lot more for a lot less. The simplified architecture uses state-of-the-art IT equipment with a small equipment footprint, minimising acquisition costs and space requirements. Once up and running, virtualised servers and all IP architecture enable cost effective operation with up to 70% better power consumption and less cooling. Using off-the-shelf IT platforms future-proofs the network so that upgrades or expansions are not tied to a vendors hardware and obsolescence problems are minimised.

Higher Capacity

As TETRA becomes ever more popular, a flexible IP based architecture is essential so users can easily upgrade to more capacity without compromising system design. State-of-the-art IT servers enable exceptional levels of voice and data network capacity – a 50% increase in site capacity and 115% greater voice capacity.

Enhanced Security

Data integrity is critical. Release 8 includes a comprehensive set of advanced server redundancy options and improved link security to prevent intrusion and malicious attacks. It detects and resists threats including acts of terrorism, maintaining data integrity so information is never compromised.

Long Term Evolution

TETRA is a long term investment that's continually evolving. Release 8 provides an upgrade path to support broadband and LTE networks through a virtualised architecture that separates software from the hardware platform. A unified network of TETRA and broadband makes a lot of sense in today's fast changing world.



DIMETRA IP MICRO

DIMETRA IP COMPACT

MTS4

MTS2

MTS1

The ground breaking MTS1 features a compact and robust design for easy transportation and rapid indoor or outdoor installation.



MISSION CRITICAL SERVICES FOR MISSION CRITICAL CHALLENGES

TETRA networks are sophisticated systems that require highly skilled management to ensure that the network, devices and the applications deployed on them continually deliver optimum performance, reliability, security and cost effectiveness. This complexity makes management of your TETRA system time, cost and effort intensive.

Motorola's TETRA Lifecycle Services take the technology management burden off your hands and free your organization to focus on your core mission. Our comprehensive portfolio of services offerings is built on a lifecycle approach, encompassing Professional, Integration, Support and Managed Services.

YOUR LIFELINE WHEN SAFETY COMES FIRST



NEW FOR 2012 TRACES FOR NETWORK OPERATORS

A unique network monitoring application that builds a detailed picture of a network operator's entire network by automatically and continuously capturing network performance data from actual user devices and base stations. This means you get unprecedented 24/7 access to a real-time view of your network; delivering the information you need to analyse and fully understand network usage; and enabling you to pinpoint and address any issues before they become critical - perhaps even before they are reported by your customers.



PROFESSIONAL SERVICES

No network is ever successfully deployed or managed without a comprehensive operations and technology strategy. Our collaborative professional services team will help you determine the requirements, goals and expectations you have for your system. We'll help you assess, plan and design your network – including IP infrastructure, devices and applications – and guide you through the complexities of deploying and implementing the system that realises your TETRA vision.

INTEGRATION SERVICES

TETRA systems are as complex as they are powerful. Through our comprehensive integration services, we help you simplify the increasing complexity of deploying, integrating and managing your network, devices and applications. We help simplify the integration of your TETRA network with your existing mission-critical core system, extending reach to eliminate old boundaries and provide crucial operational redundancy. Our integration teams offer proven expertise in optimising performance, security and efficiency in large-scale, multi service, multi-vendor TETRA networks.

SUPPORT SERVICES

Protect and streamline your TETRA system with our mission-critical level technical support and maintenance services, including world-class operations centres and emergency response teams committed to keeping critical operations online.

MANAGED SERVICES

By choosing our managed public safety solutions, you ensure all the functionality, performance and information you need by using our expert, industry-leading resources to build, deploy and operate your TETRA solution. Our managed services offer you exceptional productivity, cost-effectiveness and flexibility. You can choose to leverage our services for individual system elements – such as network design, integration, or security – or you can choose to let us manage your entire TETRA solution. This enables you to maximise your own resources, freeing you to focus on your primary mission.

MANAGING THE TOTAL TETRA SOLUTION IN NORWAY

MOTOROLA TAKE OVER PRIME CONTRACTOR RESPONSIBILITY FOR NORWAY'S NATIONWIDE PUBLIC SAFETY NETWORK

In January this year, Motorola Solutions took over responsibility from Nokia Siemens Networks of Nodnett, Norway's TETRA public safety network. It's one of Motorola's largest nationwide public safety contracts, worth US \$750 million through 2026. Motorola celebrates 30 years in the Norwegian market in 2012.

Nodnett leads the way in developing communication networks for emergency and public safety services in Norway. Motorola Solutions takes on that challenge with continued roll out, implementation and operation of the networks for the country's key public safety agencies. The goal is to deliver a mission-critical public safety network that the Norwegian community can rely on. One that takes full advantage of Motorola's 80 year heritage in public safety and the many opportunities offered by TETRA technology.

Motorola broadens its scope from being a technology supplier for core TETRA digital radio communications to being a prime contractor with managed services. Motorola's expertise will provide cutting-edge communication solutions and help Norway's emergency services perform to the best of their abilities.

TETRA DATA SERVICES

MSPD

Multi Slot Packet Data is an enhanced service running on TETRA networks that provides faster access to data such as database queries and images. When your TETRA radio connects to the network, it can handle four separate voice calls or data transmissions. MSPD increases the speed of access by bundling time slots together. MSPD requires an upgrade to your software but doesn't involve any changes to your hardware, radios, base stations or network

TEDS

TETRA Enhanced Data Service is around ten times faster than MSPD and opens up a whole new range of public safety applications as well as dramatically increasing data rates. But this improved TETRA data standard requires compatible TEDS radios, base stations and networks, making upgrading necessary. It's certainly the way forward for more capacity but for many of today's applications Multi Slot Packet Data will work very well.

APPLICATIONS

There's so much more users can do with TETRA digital radio than just voice communications. Checking addresses and mobile phone numbers, validating driving licenses and vehicle license plates, completing and submitting stop and search forms and sending status updates can all be done over the air and save time and money and improve efficiency and effectiveness.

With features like Radio Messaging Service and Call Out, TETRA radios can be used to mobilise resources in the field and send status updates. Mobile Computing Devices can be used to connect to police computer databases, national phone registers and criminal records. They can access maps, run identity searches and find real-time intelligence so officers can get the information they need while out on patrol.

PRIVATE OR PUBLIC

RESILIENT AND SECURE

Operating on lower frequencies than public networks, TETRA has a longer range for wider geographical coverage. It is designed specifically for public safety use on a network that's always available and immune from congestion. Security is strong with end-to-end and air interface encryption, the option to disable radios if required and robust user authentication.

EMERGENCIES

In a crisis, public networks can get very busy and even overload. One of the benefits of TETRA is that it has been designed for public safety. Calls and messaging will always get through to officers on the front line so they can react quickly. TETRA can prioritize specific talk groups during incidents and supports a range of emergency calling modes.

TETRA AND DATA

YOUR LIFELINE FOR WHAT YOU NEED, WHEN YOU NEED IT

CONVERGED DEVICES

By linking a TETRA radio with a mobile computing device, officers get the best of both worlds. New radios such as the MTP3000 Series with Bluetooth® can easily link up with mobile computers or LTE devices running on GPRS or 3G to provide the security and resilience of a dedicated TETRA network alongside the data capacity of a commercial network so that they are never out of coverage or without service. This multi device, multi bearer approach is most likely to provide officers with the best available access to information whilst on the street.

MTP3000 SERIES



HARNESSING THE POWER OF REAL-TIME MOBILE VIDEO

In the world of public safety, what you don't know can hurt you. The more information public safety personnel have about a situation, the more effective they can be. That's one big reason why video is rapidly becoming one of the most important tools for enhancing the safety of first responders, citizens and the entire community.

Video cameras already extend the reach of law enforcement by monitoring public places like parks, stadiums and high streets. Dispatchers use video from traffic cameras to help determine what type of emergency vehicles to send to a multi-car accident, to redirect officers away from highway congestion or to assist with pursuits. Police officers rely on the cameras in their vehicles to record incidents like arrests, high-speed chases or run number plates.

Until recently, however, one critical element was still lacking from video solutions: The ability for law enforcement to easily access real-time video while mobile - and share it with others in the field, command centre and vehicle.

Enter Motorola's Real-Time Video Intelligence (RTVI) system, an innovative software solution designed to maximise the crime-fighting potential of video. With mobile broadband, it allows real-time mobile video to flow freely from camera to command centre, out to mobile devices and everywhere in between.

Motorola RTVI enables real-time access to high-quality video that helps fight crime, increase public safety and save lives.

LEX 700 DELIVERING STREET READY DATA



BUILT FOR THE STREET

The Motorola LEX 700 Mission Critical Handheld lets you respond with the intelligence of the entire team at your back. With a rugged, discreet form factor and a quick-response interface, it gives you always-on public safety applications that help you see what's in front, what's behind, and what's next, all at once. It's the one solution with government-grade security and easy deployment and management. And the one solution that makes you ready for almost anything.



SAN FRANCISCO BAY AREA TO BUILD ONE OF THE FIRST REGION-WIDE PUBLIC SAFETY 700 MHZ LTE INTEROPERABLE BROADBAND NETWORKS

"BayWEB (Bay Area Wireless Enhanced Broadband) will provide the kind of interoperable communications that help to better protect our officers on the streets and help them keep our neighborhoods safe."
Greg Suhr, chief of police, San Francisco, California

Motorola will build, own, operate and maintain the LTE network, including 100 sites, to deliver reliable and secure broadband services to public safety and public service agencies in the greater San Francisco area.

EXCEPTIONAL CONNECTIVITY

Whether it is data, photos, video or voice, the LEX 700 Mission Critical Handheld is designed to bring it to you quickly, reliably and securely. In the field, the LEX 700 delivers virtually unlimited connectivity:

- Band 14 Public Safety LTE
- Public carrier cellular broadband
- 802.11 a/b/g/n Wi-Fi™
- Mission Critical Wireless and Bluetooth®
- Mobile VPN (Virtual Private Network) with prioritization
- GPS, including standalone and assisted (aGPS)

This connectivity not only makes the LEX 700 versatile in the field - it also helps your agency leverage existing infrastructure and maximize return on prior investments.

HELPING YOU STAY IN CONTROL

A large-scale deployment of portable devices will pose challenges for IT staff. To help make it easier, we offer software and services that help agencies deal with user accounts, deploy and update software to devices in the field, control profiles and policies associated with each device - even delete data from a device that has been lost or stolen. Everything from battery health to patch management to application lockdown can be done while the unit remains in the field. Support staff can also operate a device remotely, which significantly lowers support costs and allows field personnel to stay focused on the mission and remain where they are needed most.

TRANSFORM THE WAY YOU RESPOND

Rapidly evolving technology is driving the need for public safety agencies to change their operations to accommodate data and video information, and adding complexity to communications systems already challenged with aging infrastructure and disparate technologies.

New technologies have to work flawlessly with existing legacy infrastructure and applications, plus scale to accommodate future needs. Your agency has to interoperate with other agencies and jurisdictions. And, everything has to be intuitive and user-friendly to save staff precious seconds.

Motorola Integrated Command and Control solutions combine new technologies and advanced communications systems, like TEDS and public safety LTE, to deliver real-time data and video so dispatchers and first responders can share a common operational view for smarter, faster decisions.

We understand the unique needs of public safety and the challenges of integrating existing and next generation technology. We'll work with you to develop and deploy a solution that meets your requirements and then support you to maintain your systems and add functionality as your needs grow.

Motorola will help you transform the way you respond, simplify your operation and allow you to more effectively focus on your mission - keeping communities safe.



M VISION

TAKE CONTROL OF YOUR RADIO AND TELEPHONE COMMUNICATIONS

Imagine the situation. An emergency call comes, teams have to be located and mobilised, resources managed and critical information dispatched to the right people quickly. You need an effective system in place to plan a rapid response.

M-Vision is an ideal command and control solution for small or medium-sized control centres with 16 positions or less. It allows on-screen voice communication control and is highly configurable so you can tailor it

to your own specific operational needs. Perfect for single agency fire, police and ambulance services or as a multi-agency solution.

As situations develop, M-Vision can provide voice and text updates so response teams have up to the minute data at their fingertips. Operators track incidents and response status in real time on a single screen, rescheduling officer duties, initiating radio calls and liaising with support agencies. All for faster response and incident resolution.



WOULD YOU LIKE TO KNOW MORE?



BRINGING IT ALL TOGETHER

HELPING YOU MAKE THE TRANSITION SO YOU CAN FOCUS ON YOUR MISSION

Time is precious and sometimes the whole process of managing an IT transition can seem overwhelming. That's when you need help from a trusted partner like Motorola with over 20 years of expertise working in command and control. We'll be with you every step of the way from solution planning and design to integration, hosting and redefining practices to take advantage of next generation opportunities. Complete support from analyzing your needs to managing the solution so you'll have time to focus on the bigger picture.

PLANNING AND DESIGN

Whether you're enhancing an existing setup, introducing new capabilities such as real-time video and CAD or deploying a whole new system, we'll analyse your needs and work with you to design the ideal solution.

SOLUTIONS INTEGRATION

Once your design is complete we drive integration, ensuring a seamless migration. As a single point of accountability, we keep the process smooth and secure with our highly certified staff from start to finish following ITIL processes and proven methodologies. We liaise with suppliers and the emergency services network to make sure your new solution works perfectly from day one.

CONSULTING & OPTIMISATION

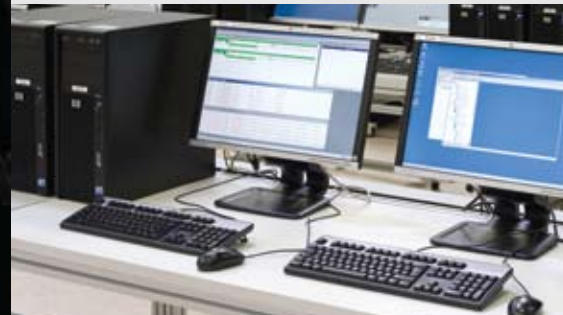
We live in an ever changing world. With technology planning, business process design and change management services, Motorola helps you redefine procedures to take advantage of next generation opportunities. Our consultancy support includes business modeling, compliance and disaster recovery planning for total solution optimisation.

MANAGEMENT & SUPPORT

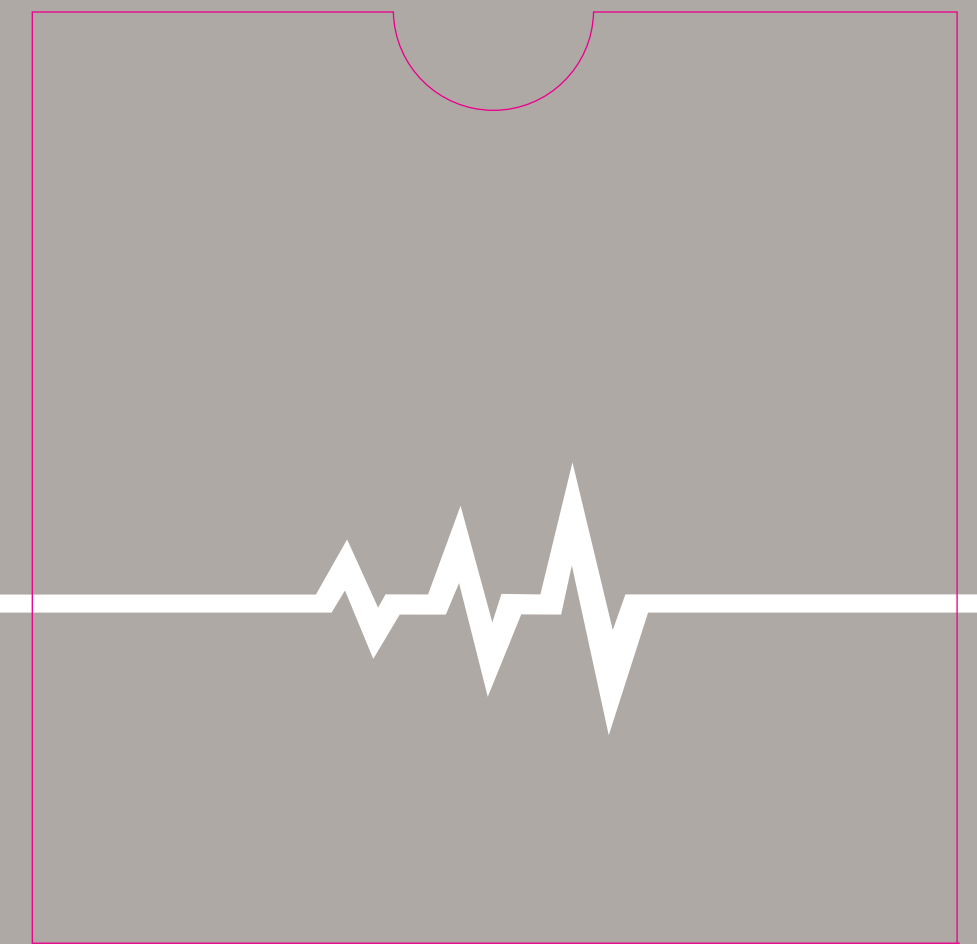
Around the clock on-going support from daily maintenance to outsourcing control room operations helps keep your solution at peak performance with maximum availability and security. It also frees up your precious time to focus on core strategy.

MOTOROLA CONSOLES

The beauty of Motorola Integrated Command & Control is its inherent scalability with the ability to tailor solutions to individual needs. Consoles such as the MCC7500 are designed for effortless integration and ease of use in the field with a flexible interface. They provide secure prioritised emergency communications and work seamlessly with existing analogue or conventional networks for simple migration to a TETRA trunking solution. Motorola consoles are ready to evolve with your needs too, keeping you at the forefront of communication technology now and in the future.



COMMAND AND CONTROL





MOTOROLA TETRA SOLUTIONS YOUR LIFELINE WHEN TIME IS CRITICAL

For more information on our TETRA Solutions, please visit us on the web at:
www.motorolasolutions.com/TETRA

MOTOROLA, MOTO, MOTOROLA SOLUTIONS and the Stylized M Logo are trademarks or registered trademarks of Motorola Trademark Holdings, LLC and are used under license. All other trademarks are the property of their respective owners.
© 2012 Motorola Solutions, Inc. All rights reserved.

TWC2012_BROCHURE_(03/12)

